

Overview

<u>Resident Live Births</u>	
Number of Live Births	11,890
Rate per 1,000 Population	13.5
<u>Infant Deaths</u>	
Number of Infant Deaths	70
Rate per 1,000 Live Births	5.89
<u>Resident Deaths</u>	
Number of Resident Deaths	7,971
Rate per 100,000 Population	903.5
<u>Fetal Deaths</u>	
Number of Fetal Deaths	55
Rate per 1,000 Live Births + Fetal Deaths	4.60
<u>Marriages</u>	
Number of Marriages	5,757
Rate per 1,000 Population	6.5
<u>Divorces</u>	
Number of Divorces	2,265
Rate per 1,000 Population	2.6

This report contains selected health statistics that are widely used by the Department of Health, other government agencies, and the public. This information has proven to be useful in determining trends in health status, for planning health care services and for making decisions about public health programs. It also fulfills diverse requirements in the business community and academic research.

Vital statistics data are compiled and maintained under the direction of the Director of the Health Statistics Office (HSO). The data are analyzed by staff from the HSO and can be found in the following sections: Natality, Infant Mortality, Mortality, Marriage and Divorce, Health Status Profiles, and Health Status Maps. When referring to divorce throughout this report, please note that annulments are included in the Divorce category. Induced Abortion data are now a separate report available online July 1 of each year.

Infectious disease data are collected, compiled, and analyzed within the Office of Disease Prevention. Data on communicable diseases can be found in the Infectious Disease section of the report.

Quick References

Pages

• Tables 1, & 3-6 – Number of Vital Events by County	4-5 and 8-15
• Figure 6 – Graph Comparing State and National Rates	38
• Tables 7, 34, 45, 78 & 80 – Tables Comparing State and National Rates	19, 37, 53, 89, 90
• Maps 1 through 23 – Health Status Maps by County	191 – 213

The contacts listed in the Preface welcome suggestions for additional changes that would make the next compilation even more useful to those involved in improving the health of South Dakotans.

Table 1
South Dakota Vital Statistics by County, 2018

	Births		Deaths		Infant Deaths		Fetal Deaths		Marriages		Divorces	
	Number	Rate	Number	Rate	Number	Rate	Number	Rate	Number	Rate	Number	Rate
South Dakota	11,890	13.5	7,971	903.5	70	5.89	55	4.60	5,757	6.5	2,265	2.6
County												
Aurora	41	14.6	37	1,321.0	*	*	*	*	20	7.1	*	*
Beadle	284	15.0	188	995.6	*	*	*	*	98	5.2	56	3.0
Bennett	55	15.9	39	1,124.6	*	*	*	*	11	3.2	3	0.9
Bon Homme	77	11.0	74	1,060.2	*	*	*	*	37	5.3	13	1.9
Brookings	435	12.3	202	573.3	5	11.49	*	*	197	5.6	69	2.0
Brown	508	12.9	369	938.5	3	5.91	3	5.87	240	6.1	99	2.5
Brule	62	11.9	43	822.3	*	*	*	*	36	6.9	12	2.3
Buffalo	22	10.8	27	1,326.1	*	*	*	*	*	*	*	*
Butte	146	14.3	99	968.5	*	*	*	*	60	5.9	25	2.4
Campbell	14	10.2	12	871.5	*	*	*	*	*	*	*	*
Charles Mix	156	16.7	113	1,210.1	*	*	*	*	49	5.2	16	1.7
Clark	66	17.7	37	989.6	*	*	*	*	14	3.7	*	*
Clay	114	8.1	101	719.3	*	*	*	*	68	4.8	23	1.6
Codington	326	11.6	240	856.7	3	9.20	3	9.12	172	6.1	71	2.5
Corson	91	21.8	51	1,224.5	*	*	*	*	13	3.1	*	*
Custer	63	7.2	100	1,146.0	*	*	*	*	161	18.5	29	3.3
Davison	263	13.3	235	1,187.5	*	*	*	*	114	5.8	60	3.0
Day	72	13.1	87	1,580.4	*	*	*	*	29	5.3	11	2.0
Deuel	53	12.2	50	1,152.9	*	*	*	*	35	8.1	5	1.2
Dewey	138	23.4	57	965.4	*	*	*	*	10	1.7	4	0.7
Douglas	41	14.0	45	1,533.2	*	*	*	*	20	6.8	5	1.7
Edmunds	34	8.8	48	1,238.7	*	*	*	*	20	5.2	5	1.3
Fall River	44	6.5	116	1,716.5	*	*	*	*	42	6.2	24	3.6
Faulk	32	13.7	35	1,502.1	*	*	*	*	12	5.2	*	*
Grant	80	11.2	83	1,161.3	*	*	*	*	39	5.5	18	2.5
Gregory	50	11.9	63	1,495.7	*	*	*	*	28	6.6	12	2.8
Haakon	14	7.3	26	1,355.6	*	*	*	*	8	4.2	*	*
Hamlin	125	20.5	61	998.2	*	*	*	*	28	4.6	7	1.1
Hand	35	10.7	52	1,594.1	*	*	*	*	11	3.4	10	3.1
Hanson	38	11.3	17	503.6	*	*	*	*	18	5.3	*	*
Harding	19	15.2	4	320.3	*	*	*	*	5	4.0	3	2.4
Hughes	246	13.9	159	900.8	*	*	*	*	87	4.9	52	2.9
Hutchinson	115	15.6	111	1,504.1	3	26.09	*	*	31	4.2	7	0.9

Table 1 (continued)
South Dakota Vital Statistics by County, 2018

County	Births		Deaths		Infant Deaths		Fetal Deaths		Marriages		Divorces	
	Number	Rate	Number	Rate	Number	Rate	Number	Rate	Number	Rate	Number	Rate
Hyde	14	10.9	15	1,170.0	*	*	*	*	4	3.1	3	2.3
Jackson	73	22.1	29	876.9	*	*	*	*	9	2.7	5	1.5
Jerauld	24	11.7	31	1,517.4	*	*	*	*	8	3.9	4	2.0
Jones	17	18.3	12	1,293.1	*	*	*	*	4	4.3	4	4.3
Kingsbury	71	14.4	59	1,199.4	*	*	*	*	23	4.7	16	3.3
Lake	128	9.8	122	934.4	*	*	*	*	61	4.7	22	1.7
Lawrence	202	7.8	255	990.6	3	14.85	3	14.63	491	19.1	79	3.1
Lincoln	829	14.1	271	460.8	*	*	*	*	325	5.5	134	2.3
Lyman	74	19.4	45	1,177.7	*	*	*	*	25	6.5	3	0.8
McCook	85	15.3	68	1,226.1	*	*	*	*	27	4.9	5	0.9
McPherson	24	10.0	28	1,163.3	*	*	*	*	15	6.2	*	*
Marshall	66	12.9	39	762.9	*	*	*	*	37	7.2	11	2.2
Meade	261	9.2	220	777.6	3	11.49	*	*	252	8.9	109	3.9
Mellette	33	16.2	32	1,567.1	*	*	*	*	21	10.3	*	*
Miner	29	13.1	35	1,581.6	*	*	*	*	10	4.5	6	2.7
Minnehaha	2,890	15.0	1,508	781.8	22	7.61	13	4.48	1,323	6.9	591	3.1
Moody	81	12.3	68	1,033.6	*	*	*	*	38	5.8	13	2.0
Oglala Lakota	261	18.2	150	1,048.3	*	*	*	*	6	0.4	4	0.3
Pennington	1,541	13.8	948	848.5	4	2.60	5	3.23	780	7.0	423	3.8
Perkins	33	11.3	34	1,163.6	*	*	*	*	12	4.1	*	*
Potter	24	10.9	30	1,359.3	*	*	*	*	13	5.9	7	3.2
Roberts	167	16.0	121	1,158.2	*	*	*	*	76	7.3	17	1.6
Sanborn	32	13.2	31	1,276.2	*	*	*	*	9	3.7	5	2.1
Spink	84	12.9	76	1,170.1	*	*	*	*	37	5.7	17	2.6
Stanley	44	14.6	12	397.1	*	*	*	*	25	8.3	6	2.0
Sully	16	11.5	16	1,149.4	*	*	*	*	4	2.9	3	2.2
Todd	230	22.4	109	1,060.0	3	13.04	3	12.88	20	1.9	*	*
Tripp	88	16.1	63	1,150.1	*	*	*	*	24	4.4	12	2.2
Turner	101	12.0	106	1,258.3	*	*	*	*	73	8.7	21	2.5
Union	166	10.6	122	781.1	*	*	*	*	114	7.3	36	2.3
Walworth	66	11.8	81	1,449.8	*	*	*	*	15	2.7	5	0.9
Yankton	253	11.1	240	1,049.5	*	*	*	*	156	6.8	50	2.2
Ziebach	24	8.8	14	510.6	*	*	*	*	3	1.1	*	*

Note: Births, deaths, infant deaths, and fetal deaths are by county of residence; marriages and divorces are by county of occurrence.
 Birth, marriage, and divorce rates are per 1,000 population. Death rates are per 100,000 population. Infant mortality rates are per 1,000 live births.
 Fetal mortality rates are per 1,000 live births plus fetal deaths.
 *Department of Health policy prohibits publishing vital events in cells with less than three events at a county level.

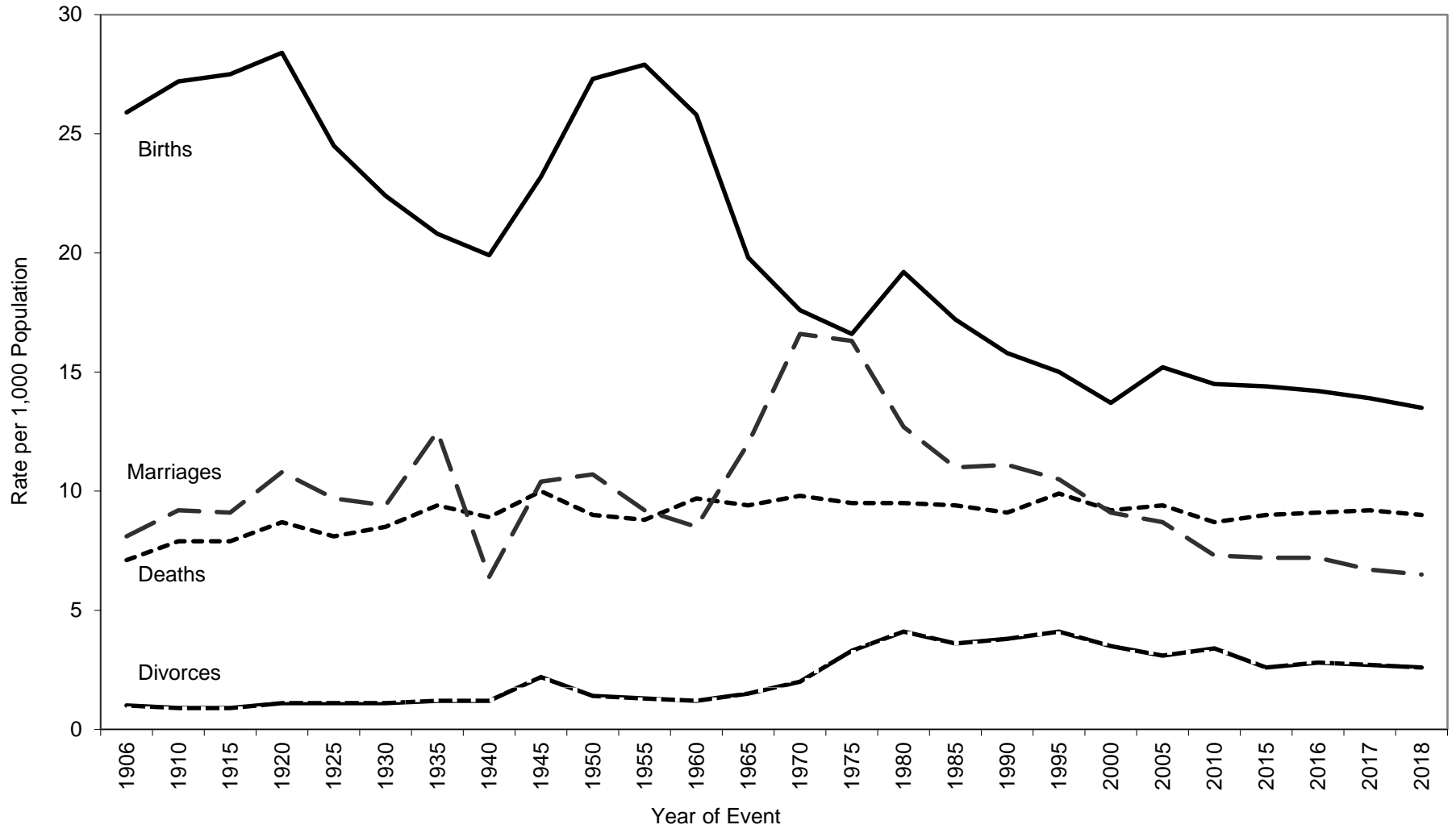
Source: South Dakota Department of Health, Office Health Statistics

**Table 2
Selected Records in Vital Statistics,
South Dakota, 2018**

NATALITY			
Oldest Father:	77	Oldest Mother:	49
Youngest Father:	14	Youngest Mother:	14
Smallest Live Birth:	1 lb. 2 oz.		
Largest Live Birth:	12 lbs. 3 oz.		
Most Popular Names for Infants			
<u>Boy's Names</u>	<u>Number</u>	<u>Girl's Names</u>	<u>Number</u>
Henry	60	Harper	59
Grayson	56	Emma	50
Liam	56	Olivia	47
Oliver	53	Charlotte	45
Owen	52	Ava	42
Carter	51	Elizabeth	36
Logan	49	Evelyn	36
Jack	41	Nora	36
Lincoln	41	Avery	34
William	37	Sophia	29
		Willow	29
MORTALITY			
Oldest Male Decedent:	106	Oldest Female Decedent:	107
DIVORCE			
Longest Duration of a Marriage Ending in a Divorce:	57 Years		

Source: South Dakota Department of Health, Office of Health Statistics

Figure 1
Birth, Death, Marriage, and Divorce Rates for
South Dakota, 1906-2018



Source: South Dakota Department of Health, Office of Health Statistics

L

Table 3
South Dakota Resident Births by Resident County and Year of Birth, 2009-2018

	Year of Birth									
	2018	2017	2016	2015	2014	2013	2012	2011	2010	2009
Total	11,890	12,128	12,270	12,323	12,281	12,243	12,092	11,834	11,795	11,930
County										
Aurora	41	36	49	33	42	40	30	39	29	34
Beadle	284	273	347	297	366	337	327	294	274	268
Bennett	55	61	65	71	72	69	69	76	70	65
Bon Homme	77	64	68	76	56	57	77	62	67	53
Brookings	435	451	414	471	406	430	404	385	379	383
Brown	508	510	557	492	482	512	476	485	467	475
Brule	62	78	71	69	77	70	84	69	74	68
Buffalo	22	47	52	42	53	58	47	57	49	46
Butte	146	131	135	100	142	133	120	136	114	141
Campbell	14	14	8	13	15	12	9	8	16	18
Charles Mix	156	168	164	156	174	151	161	157	156	162
Clark	66	66	65	61	67	51	43	52	48	57
Clay	114	155	147	145	143	166	151	152	138	175
Codington	326	336	370	381	372	410	376	372	375	399
Corson	91	101	101	89	86	93	87	84	78	74
Custer	63	78	69	86	65	71	66	77	85	62
Davison	263	227	257	242	271	263	264	262	258	296
Day	72	62	50	73	56	52	76	59	68	65
Deuel	53	53	64	44	47	46	46	48	51	47
Dewey	138	154	163	148	153	148	151	144	118	119
Douglas	41	44	46	43	40	33	37	36	30	31
Edmunds	34	43	46	48	53	46	46	47	34	46
Fall River	44	51	60	76	55	63	61	49	55	46
Faulk	32	38	31	32	38	23	28	28	24	29
Grant	80	87	84	74	97	80	83	69	81	81
Gregory	50	52	58	50	62	45	44	42	50	43
Haakon	14	26	19	26	17	20	18	23	23	26
Hamlin	125	110	111	121	118	124	127	107	102	104
Hand	35	44	39	24	42	38	28	36	46	27
Hanson	38	42	39	36	49	56	51	44	55	44
Harding	19	15	16	21	20	17	14	9	15	10
Hughes	246	221	233	249	229	255	230	237	225	250
Hutchinson	115	117	120	120	102	107	86	72	81	80

Table 3 (continued)
South Dakota Resident Births by Resident County and Year of Birth, 2009-2018

County	Year of Birth									
	2018	2017	2016	2015	2014	2013	2012	2011	2010	2009
Hyde	14	18	20	15	14	19	9	15	12	12
Jackson	73	92	81	67	71	78	69	68	75	71
Jerauld	24	18	20	16	32	24	23	24	29	29
Jones	17	9	13	11	9	10	10	11	10	14
Kingsbury	71	67	67	64	66	61	54	71	51	63
Lake	128	131	133	134	122	140	128	133	128	130
Lawrence	202	241	241	220	245	230	240	213	252	257
Lincoln	829	846	810	751	766	753	852	781	808	825
Lyman	74	63	82	74	71	69	60	76	72	53
McCook	85	90	68	80	81	75	74	66	80	84
McPherson	24	18	27	22	30	24	25	24	18	18
Marshall	66	73	74	70	72	62	56	60	50	59
Meade	261	258	269	304	318	320	327	314	334	312
Mellette	33	45	44	40	35	37	27	27	38	35
Miner	29	27	21	32	22	28	20	24	19	28
Minnehaha	2,890	2,908	2,936	3,046	2,947	2,863	2,811	2,779	2,749	2,761
Moody	81	87	91	93	93	93	93	86	89	90
Oglala Lakota	261	321	284	337	312	352	350	344	370	344
Pennington	1,541	1,466	1,470	1,536	1,540	1,596	1,532	1,502	1,549	1,564
Perkins	33	37	40	33	35	40	30	29	32	28
Potter	24	15	28	24	24	20	25	27	24	21
Roberts	167	164	168	181	177	201	176	187	159	169
Sanborn	32	33	39	39	37	35	34	28	24	24
Spink	84	82	85	67	69	80	91	72	78	60
Stanley	44	29	42	45	39	35	36	43	41	39
Sully	16	24	16	11	15	17	13	18	18	19
Todd	230	256	260	274	279	250	288	313	242	274
Tripp	88	84	79	71	71	65	66	70	61	66
Turner	101	103	75	104	81	86	89	89	101	86
Union	166	191	163	169	140	150	178	169	179	181
Walworth	66	88	61	86	85	70	66	69	56	73
Yankton	253	269	318	266	281	253	275	246	258	261
Ziebach	24	19	27	32	35	31	48	38	54	56

Note: Failure of births to add to the total is due to county not stated.
Source: South Dakota Department of Health, Office of Health Statistics

Table 4
South Dakota Resident Deaths by Resident County and Year of Death, 2009-2018

	Year of Death									
	2018	2017	2016	2015	2014	2013	2012	2011	2010	2009
Total	7,971	7,991	7,838	7,724	7,500	7,079	7,283	7,271	7,087	6,913
County										
Aurora	37	31	20	24	28	32	29	29	26	31
Beadle	188	177	195	205	196	175	182	201	187	205
Bennett	39	42	45	34	32	29	30	31	37	30
Bon Homme	74	88	75	71	77	78	71	69	69	83
Brookings	202	177	202	182	202	183	230	182	165	203
Brown	369	364	376	362	393	399	378	355	396	336
Brule	43	45	60	57	53	50	69	56	47	54
Buffalo	27	20	33	21	17	16	18	18	16	24
Butte	99	121	98	112	102	93	110	123	100	92
Campbell	12	19	13	19	11	10	17	21	11	14
Charles Mix	113	111	113	129	95	83	82	98	99	122
Clark	37	40	47	41	45	50	40	62	56	52
Clay	101	110	105	101	100	101	101	89	105	90
Codington	240	248	241	235	264	224	229	239	237	238
Corson	51	52	51	47	37	52	43	44	40	52
Custer	100	96	110	92	85	77	88	82	82	73
Davison	235	217	224	210	241	179	213	205	190	157
Day	87	86	76	69	66	73	76	86	65	95
Deuel	50	53	47	48	37	39	38	43	36	42
Dewey	57	59	52	72	68	68	65	48	56	48
Douglas	45	36	42	45	47	38	39	58	50	41
Edmunds	48	45	43	40	39	44	55	50	45	50
Fall River	116	122	113	120	130	118	111	113	104	110
Faulk	35	27	31	40	28	34	27	23	28	20
Grant	83	87	91	89	86	106	66	72	66	89
Gregory	63	56	59	64	64	63	72	58	74	56
Haakon	26	30	22	29	23	35	26	27	22	15
Hamlin	61	55	73	59	61	68	76	78	60	73
Hand	52	41	48	49	41	55	38	41	43	28
Hanson	17	33	22	20	34	21	11	24	22	19
Harding	4	12	8	*	11	4	8	11	12	8
Hughes	159	163	148	154	137	135	124	147	136	164
Hutchinson	111	110	115	119	118	106	106	111	113	105

Table 4 (continued)
South Dakota Resident Deaths by Resident County and Year of Death, 2009-2018

County	Year of Death									
	2018	2017	2016	2015	2014	2013	2012	2011	2010	2009
Hyde	15	29	28	21	15	14	27	15	20	18
Jackson	29	44	37	37	34	34	34	35	35	29
Jerauld	31	30	26	25	28	18	38	32	27	28
Jones	12	16	8	10	9	9	10	16	5	7
Kingsbury	59	68	68	75	69	77	58	73	79	68
Lake	122	129	126	118	110	105	110	101	113	107
Lawrence	255	249	235	240	225	226	240	201	208	203
Lincoln	271	279	259	230	207	181	201	216	181	166
Lyman	45	31	39	41	32	24	42	46	28	34
McCook	68	63	73	85	83	73	80	68	74	83
McPherson	28	33	40	35	43	41	34	37	33	25
Marshall	39	39	63	39	49	47	56	59	73	65
Meade	220	222	193	185	200	190	180	165	157	178
Mellette	32	38	28	26	19	19	24	25	25	22
Miner	35	30	38	34	28	34	27	37	38	33
Minnehaha	1,508	1,437	1,382	1,408	1,277	1,256	1,232	1,301	1,273	1,228
Moody	68	62	48	54	58	53	53	49	57	54
Oglala Lakota	150	164	163	149	112	124	130	109	131	108
Pennington	948	972	902	883	832	743	796	795	758	699
Perkins	34	44	41	39	51	39	38	57	48	32
Potter	30	34	39	40	34	29	44	42	28	40
Roberts	121	113	112	106	126	104	141	103	113	105
Sanborn	31	22	29	25	33	35	32	34	18	21
Spink	76	76	83	76	67	84	84	73	72	89
Stanley	12	22	23	19	27	14	17	22	18	13
Sully	16	12	6	11	5	13	13	8	10	9
Todd	109	89	94	85	87	101	98	81	68	87
Tripp	63	78	82	73	73	67	72	66	81	79
Turner	106	119	108	109	124	92	95	105	90	92
Union	122	138	121	116	137	92	119	107	120	106
Walworth	81	68	89	94	92	79	79	77	76	60
Yankton	240	249	240	254	221	207	199	211	211	189
Ziebach	14	19	17	20	12	12	11	11	24	17

Note: Failure of deaths to add to the total is due to county not stated.

*Department of Health policy prohibits publishing vital events in cells with less than three events at a county level.

Source: South Dakota Department of Health, Office of Health Statistics

Table 5
Marriages Occurring in South Dakota by County of Occurrence and Year of Marriage, 2009-2018

	Year of Marriage									
	2018	2017	2016	2015	2014	2013	2012	2011	2010	2009
Total	5,757	5,862	6,271	6,195	6,040	5,919	6,236	6,145	5,939	5,887
County										
Aurora	20	12	15	19	10	9	18	17	8	13
Beadle	98	90	120	117	143	135	148	147	138	128
Bennett	11	14	22	21	16	18	21	33	23	17
Bon Homme	37	32	36	34	36	35	54	47	51	30
Brookings	197	227	228	217	240	227	210	178	194	209
Brown	240	252	271	273	238	221	239	239	224	231
Brule	36	40	34	56	45	54	57	46	48	48
Buffalo	*	4	3	7	4	3	6	*	3	3
Butte	60	68	66	78	90	81	80	89	77	60
Campbell	*	5	4	6	8	6	8	6	7	9
Charles Mix	49	41	52	47	36	42	46	58	42	50
Clark	14	23	23	20	27	22	18	21	12	23
Clay	68	110	79	61	71	67	77	86	75	74
Codington	172	180	203	200	207	219	224	268	236	228
Corson	13	11	17	25	25	20	22	30	19	30
Custer	161	174	156	194	181	162	152	137	131	115
Davison	114	115	133	136	120	127	139	156	153	138
Day	29	29	26	34	34	31	40	29	26	36
Deuel	35	34	45	31	38	36	36	31	31	27
Dewey	10	15	24	19	15	15	18	15	7	17
Douglas	20	17	23	20	21	18	20	20	21	25
Edmunds	20	21	24	18	12	19	16	20	17	20
Fall River	42	55	53	66	68	63	60	62	52	51
Faulk	12	9	8	6	15	13	12	20	11	13
Grant	39	40	46	49	52	60	60	67	58	78
Gregory	28	31	41	19	26	19	16	36	30	24
Haakon	8	11	8	9	9	10	17	8	5	9
Hamlin	28	25	33	32	33	31	40	25	37	33
Hand	11	13	19	22	28	12	13	24	20	21
Hanson	18	20	21	15	17	15	6	12	15	14
Harding	5	8	10	7	7	3	9	5	11	8
Hughes	87	122	116	123	122	116	106	109	98	124
Hutchinson	31	30	36	23	39	29	39	33	34	34

Table 5 (continued)

Marriages Occurring in South Dakota by County of Occurrence and Year of Marriage, 2009-2018

County	Year of Marriage									
	2018	2017	2016	2015	2014	2013	2012	2011	2010	2009
Hyde	4	7	4	3	3	3	9	7	6	*
Jackson	9	13	11	11	15	14	11	14	18	9
Jerauld	8	*	6	5	10	15	7	10	10	10
Jones	4	3	6	5	*	6	3	6	5	6
Kingsbury	23	10	28	19	14	22	22	27	31	34
Lake	61	71	83	74	76	83	89	64	81	93
Lawrence	491	459	450	474	448	482	487	466	454	461
Lincoln	325	287	218	167	178	196	155	147	168	149
Lyman	25	14	22	22	17	19	14	16	21	15
McCook	27	31	24	30	31	21	36	24	24	23
McPherson	15	14	8	11	10	7	9	9	7	7
Marshall	37	25	37	28	23	31	33	20	33	27
Meade	252	253	261	321	238	264	204	216	218	208
Mellette	21	23	29	30	19	17	29	21	30	21
Miner	10	13	9	6	9	11	9	14	16	13
Minnehaha	1,323	1,373	1,522	1,529	1,494	1,367	1,492	1,398	1,321	1,333
Moody	38	29	22	36	26	40	46	43	37	43
Oglala Lakota	6	5	6	10	13	8	4	6	6	5
Pennington	780	737	832	786	774	768	863	893	891	850
Perkins	12	11	19	20	19	20	22	16	13	11
Potter	13	8	17	7	18	18	12	18	8	18
Roberts	76	86	91	91	77	85	116	100	104	104
Sanborn	9	10	13	10	10	8	13	7	8	6
Spink	37	32	29	32	29	20	22	33	24	24
Stanley	25	27	24	14	13	18	24	25	20	28
Sully	4	5	6	5	6	4	3	5	*	*
Todd	20	22	14	12	11	13	11	15	19	22
Tripp	24	30	34	28	33	28	36	25	34	31
Turner	73	43	47	45	55	51	34	38	44	36
Union	114	130	175	157	148	146	169	151	189	176
Walworth	15	31	39	26	37	30	32	50	26	16
Yankton	156	181	183	171	149	162	184	180	155	162
Ziebach	3	*	7	6	*	4	9	5	3	*

Note: *Department of Health policy prohibits publishing vital events in cells with less than three events at a county level.

Source: South Dakota Department of Health, Office of Health Statistics

Table 6
Divorces Occurring in South Dakota by County of Occurrence and Year of Divorce, 2009-2018

	Year of Divorce									
	2018	2017	2016	2015	2014	2013	2012	2011	2010	2009
Total	2,265	2,340	2,400	2,252	2,374	2,450	2,550	2,694	2,774	2,686
County										
Aurora	*	7	3	4	5	5	7	6	4	9
Beadle	56	51	48	55	67	52	57	70	78	61
Bennett	3	4	4	3	3	*	4	*	*	5
Bon Homme	13	15	15	15	16	9	15	10	14	18
Brookings	69	66	66	83	57	79	85	93	91	75
Brown	99	125	108	86	86	119	127	138	146	116
Brule	12	14	14	16	19	21	13	17	10	19
Buffalo	*	*	*	*	*	*	*	*	*	*
Butte	25	35	38	35	42	35	35	31	40	51
Campbell	*	*	*	*	*	4	5	*	5	*
Charles Mix	16	10	7	12	11	5	11	12	13	9
Clark	*	5	10	8	9	9	*	8	17	7
Clay	23	27	32	38	40	39	50	36	35	44
Codington	71	87	91	73	92	103	79	96	125	93
Corson	*	4	4	5	*	3	3	*	5	*
Custer	29	31	29	30	21	20	13	32	31	33
Davison	60	51	60	47	58	49	63	68	68	56
Day	11	13	12	11	11	8	11	10	12	16
Deuel	5	10	10	4	13	15	12	13	12	9
Dewey	4	*	*	4	*	4	3	6	4	*
Douglas	5	*	5	7	5	*	9	5	5	6
Edmunds	5	6	15	6	10	8	12	12	8	13
Fall River	24	25	29	23	23	35	36	20	30	25
Faulk	*	5	4	*	5	*	5	3	3	6
Grant	18	10	14	16	17	20	19	22	10	18
Gregory	12	13	10	11	8	10	6	6	5	6
Haakon	*	*	10	*	*	5	6	3	6	7
Hamlin	7	13	13	4	3	12	8	14	14	10
Hand	10	*	11	6	5	10	4	10	8	12
Hanson	*	3	*	5	*	4	*	5	*	4
Harding	3	6	*	3	*	4	3	4	*	*
Hughes	52	62	54	49	43	62	58	64	61	62
Hutchinson	7	11	17	9	18	10	9	16	15	10

Table 6 (continued)
Divorces Occurring in South Dakota by County of Occurrence and Year of Divorce, 2009-2018

County	Year of Divorce									
	2018	2017	2016	2015	2014	2013	2012	2011	2010	2009
Hyde	3	*	*	4	4	4	5	3	3	*
Jackson	5	7	3	3	3	*	5	3	3	6
Jerauld	4	7	3	6	3	8	10	14	6	5
Jones	4	*	*	*	5	5	*	5	*	5
Kingsbury	16	12	13	14	7	12	17	10	16	17
Lake	22	39	29	31	21	32	28	22	36	28
Lawrence	79	77	85	74	90	80	94	109	95	82
Lincoln	134	129	139	111	147	143	142	156	128	115
Lyman	3	4	*	3	3	4	6	4	4	10
McCook	5	12	16	15	21	11	17	7	15	16
McPherson	*	5	4	3	5	*	5	6	10	4
Marshall	11	7	13	8	10	11	11	10	13	8
Meade	109	84	77	99	65	83	90	107	83	128
Mellette	*	*	4	4	*	*	3	*	4	*
Miner	6	*	4	4	8	6	5	3	7	7
Minnehaha	591	611	634	586	610	593	591	662	693	619
Moody	13	12	9	15	13	10	16	16	14	16
Oglala Lakota	4	*	*	*	*	*	*	*	*	3
Pennington	423	432	432	406	452	442	481	478	515	548
Perkins	*	*	*	*	*	3	7	*	*	*
Potter	7	5	4	3	5	3	7	*	4	7
Roberts	17	20	9	11	11	18	20	19	18	11
Sanborn	5	*	3	4	5	6	12	7	9	8
Spink	17	14	18	17	23	17	16	17	15	23
Stanley	6	12	14	7	*	5	10	7	14	9
Sully	3	*	8	4	3	*	*	5	5	5
Todd	*	3	5	3	*	*	*	*	3	3
Tripp	12	6	10	11	11	7	20	10	9	18
Turner	21	17	13	20	17	31	27	36	21	28
Union	36	40	35	38	51	61	46	46	46	53
Walworth	5	3	12	8	10	14	9	15	14	21
Yankton	50	52	60	62	65	69	71	73	89	72
Ziebach	*	*	*	*	*	*	*	*	*	*

Note: *Department of Health policy prohibits publishing vital events in cells with less than three events at a county level.
Source: South Dakota Department of Health, Office of Health Statistics

