

Overweight and Obese

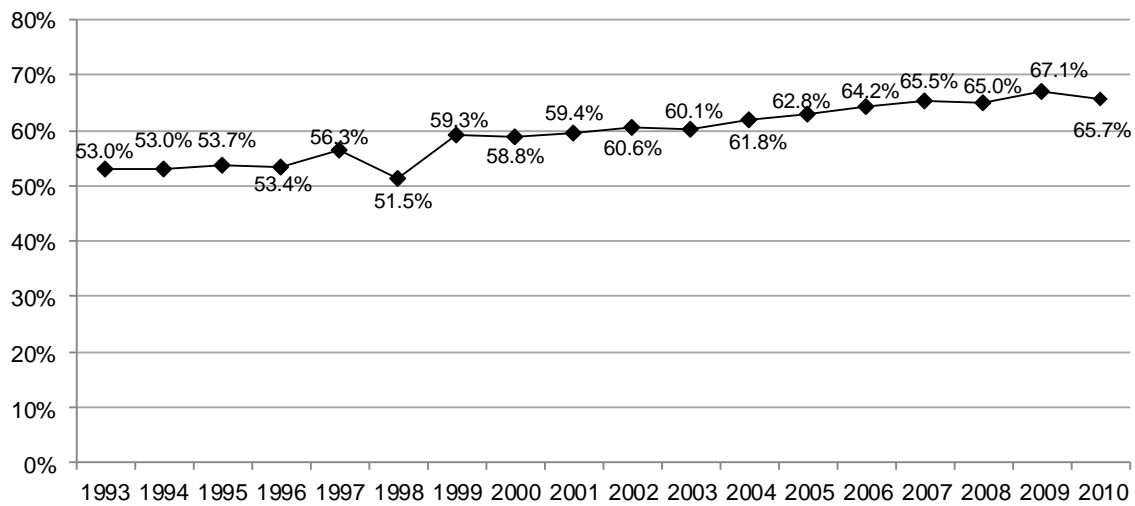
OVERWEIGHT OR OBESE

Definition: Overweight or obese is defined as having a Body Mass Index (BMI) of 25.0 or above. Body Mass Index (BMI) is calculated by taking a person's body weight in pounds, divided by their height in inches, divided by height in inches (again) times 703. The mathematical equation for BMI is: $\text{weight (lb)/height (in)}^2 \times 703$.

Prevalence of Overweight or Obese

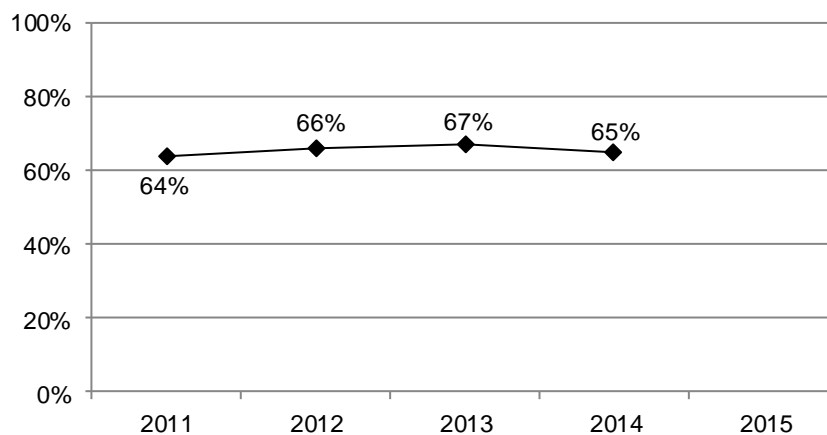
- South Dakota 65%

Figure 1
Percent of Respondents Who Are Overweight or Obese Based on Body Mass Index, 1993-2010



Source: The Behavioral Risk Factor Surveillance System, South Dakota Department of Health, 1993-2010

Figure 2
Percent of Respondents Who Are Overweight or Obese Based on Body Mass Index, 2011-2014



Note: Beginning in 2011, the CDC began using a different methodology to weight the data, therefore current data estimates cannot be compared to previous years.

Source: The Behavioral Risk Factor Surveillance System, South Dakota Department of Health, 2011-2014

Table 4
Respondents Who Are Overweight or Obese, 2011-2014

		2011-2014	2011	2012	2013	2014
Total		66%	64%	66%	67%	65%
Gender	Male	73%	73%	73%	74%	72%
	Female	58%	55%	59%	60%	58%
Age	18-24	41%	*	*	*	*
	25-34	63%	*	*	*	*
	35-44	71%	*	*	*	*
	45-54	71%	*	*	*	*
	55-64	74%	72%	73%	*	*
	65-74	74%	*	*	*	*
Race	75+	65%	*	*	*	*
	White	65%	64%	66%	67%	65%
Ethnicity	American Indian	73%	*	*	*	*
	Hispanic	68%	*	*	*	*
Household Income	Non-Hispanic	66%	64%	66%	67%	65%
	Less than \$25,000	65%	65%	64%	*	*
	\$25,000-\$49,999	67%	65%	68%	67%	67%
Education	\$50,000+	68%	69%	67%	69%	69%
	Less than High School, G.E.D.	66%	*	*	*	*
	High School, G.E.D.	68%	66%	70%	68%	67%
	Some Post-High School	65%	62%	66%	67%	66%
Employment Status	College Graduate	63%	65%	61%	65%	62%
	Employed for Wages	66%	64%	65%	68%	66%
	Self-employed	71%	*	*	*	*
	Unemployed	67%	*	*	*	*
	Homemaker	53%	*	*	*	*
	Student	40%	*	*	*	*
Marital Status	Retired	70%	69%	71%	71%	71%
	Unable to Work	73%	*	*	*	*
	Married/Unmarried Couple	70%	69%	70%	71%	69%
	Divorced/Separated	67%	*	*	*	*
Home Ownership Status	Widowed	62%	*	*	*	*
	Never Married	55%	*	*	*	*
Children Status	Own Home	68%	68%	69%	69%	67%
	Rent Home	62%	61%	61%	*	*
Phone Status	Children in Household (Ages 18-44)	62%	*	*	*	*
	No Children in Household (Ages 18-44)	54%	*	*	*	*
Pregnancy Status	Landline	68%	66%	68%	70%	67%
	Cell Phone	63%	*	63%	64%	63%
County	Pregnant (Ages 18-44)	-	-	-	-	-
	Not Pregnant (Ages 18-44)	50%	*	*	*	*
	Minnehaha	64%	*	*	*	*
	Pennington	63%	*	*	*	*
	Lincoln	64%	*	*	*	*
	Brown	67%	*	*	*	*
	Brookings	61%	*	*	*	*
County	Codington	65%	*	*	*	*
	Meade	60%	*	*	*	*
	Lawrence	57%	*	*	*	*

Note: *Results based on small sample sizes have been suppressed.

Source: The Behavioral Risk Factor Surveillance System, South Dakota Department of Health, 2011-2014

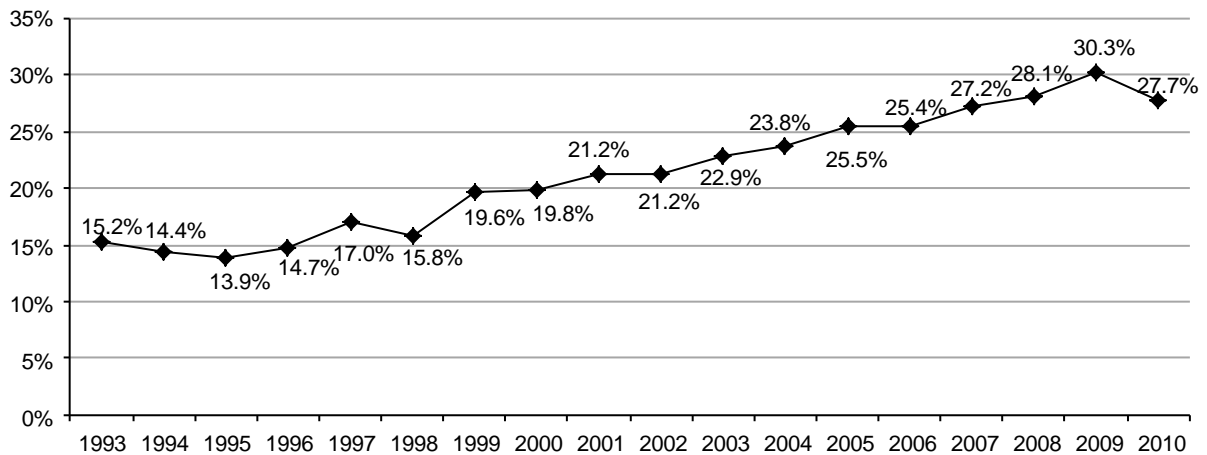
OBESITY, CLASS I-III

Definition: Obesity, Class I-III is defined as having a Body Mass Index (BMI) of 30.0 or greater. Body Mass Index (BMI) is calculated by taking a person's body weight in pounds divided by height in inches, divided by height in inches (again) times 703. The mathematical equation for BMI is: $\text{weight (lb)}/\text{height (in)}^2 \times 703$.

Prevalence of Obesity, Class I-III

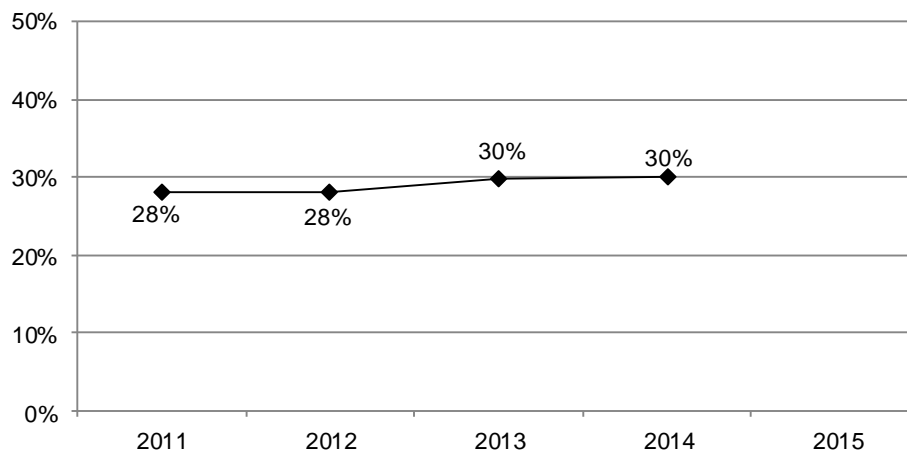
- South Dakota 30%

Figure 3
Percent of Respondents Who Are Class I-III Obese Based on Body Mass Index, 1993-2010



Source: The Behavioral Risk Factor Surveillance System, South Dakota Department of Health, 1993-2010

Figure 4
Percent of Respondents Who Are Class I-III Obese Based on Body Mass Index, 2011-2014



Note: Beginning in 2011, the CDC began using a different methodology to weight the data, therefore current data estimates cannot be compared to previous years.

Source: The Behavioral Risk Factor Surveillance System, South Dakota Department of Health, 2011-2014

**Table 5
Respondents Who Are Class I-III Obese, 2011-2014**

		2011-2014	2011	2012	2013	2014
Total		29%	28%	28%	30%	30%
Gender	Male	31%	30%	29%	32%	31%
	Female	27%	26%	28%	28%	28%
Age	18-24	16%	*	*	*	*
	25-34	27%	*	*	*	*
	35-44	33%	*	*	*	*
	45-54	34%	*	*	*	*
	55-64	35%	35%	34%	*	*
	65-74	32%	*	*	*	*
	75+	21%	*	*	*	*
Race	White	28%	27%	28%	30%	29%
	American Indian	39%	*	*	*	*
Ethnicity	Hispanic	29%	*	*	*	*
	Non-Hispanic	29%	28%	28%	30%	30%
Household Income	Less than \$25,000	32%	33%	32%	*	*
	\$25,000-\$49,999	29%	28%	30%	27%	30%
	\$50,000+	29%	27%	27%	31%	31%
Education	Less than High School, G.E.D.	31%	*	*	*	*
	High School, G.E.D.	30%	30%	31%	28%	30%
	Some Post-High School	30%	27%	28%	33%	31%
	College Graduate	26%	26%	23%	28%	27%
Employment Status	Employed for Wages	30%	29%	29%	30%	31%
	Self-employed	31%	*	*	*	*
	Unemployed	34%	*	*	*	*
	Homemaker	23%	*	*	*	*
	Student	16%	*	*	*	*
	Retired	27%	24%	29%	27%	27%
Marital Status	Unable to Work	44%	*	*	*	*
	Married/Unmarried Couple	30%	29%	30%	31%	32%
	Divorced/Separated	32%	*	*	*	*
	Widowed	26%	*	*	*	*
Home Ownership Status	Never Married	25%	*	*	*	*
	Own Home	29%	28%	29%	30%	30%
Children Status	Rent Home	30%	31%	28%	*	*
	Children in Household (Ages 18-44)	27%	*	*	*	*
Phone Status	No Children in Household (Ages 18-44)	25%	*	*	*	*
	Landline	30%	29%	29%	32%	31%
Pregnancy Status	Cell Phone	28%	*	27%	28%	29%
	Pregnant (Ages 18-44)	-	-	-	-	-
County	Not Pregnant (Ages 18-44)	25%	*	*	*	*
	Minnehaha	27%	*	*	*	*
	Pennington	27%	*	*	*	*
	Lincoln	26%	*	*	*	*
	Brown	32%	*	*	*	*
	Brookings	26%	*	*	*	*
	Codington	27%	*	*	*	*
	Meade	27%	*	*	*	*
Lawrence	25%	*	*	*	*	

Note: *Results based on small sample sizes have been suppressed.

Source: The Behavioral Risk Factor Surveillance System, South Dakota Department of Health, 2011-2014

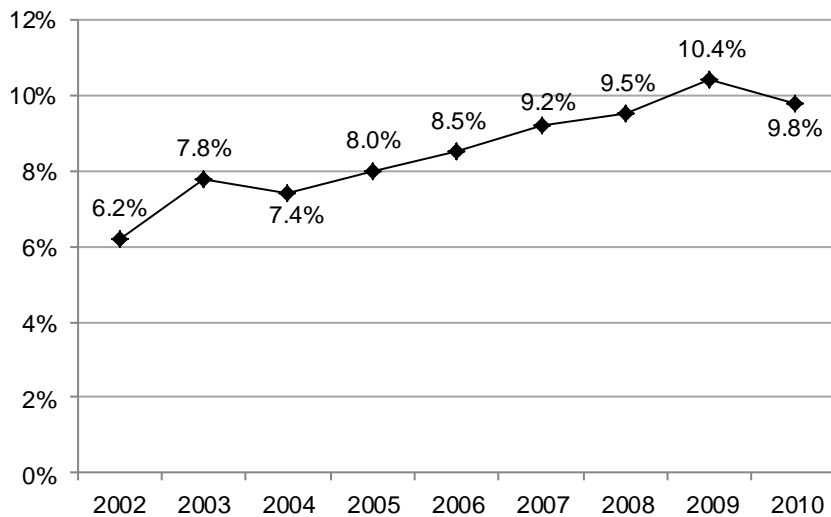
OBESITY, CLASSES II-III

Definition: Obesity, Classes II-III is defined as having a Body Mass Index (BMI) of 35.0 or greater. Body Mass Index (BMI) is calculated by taking a person's body weight in pounds divided by height in inches, divided by height in inches (again) times 703. The mathematical equation for BMI is: $\text{weight (lb)}/\text{height (in)}^2 \times 703$.

Prevalence of Obesity, Classes II-III

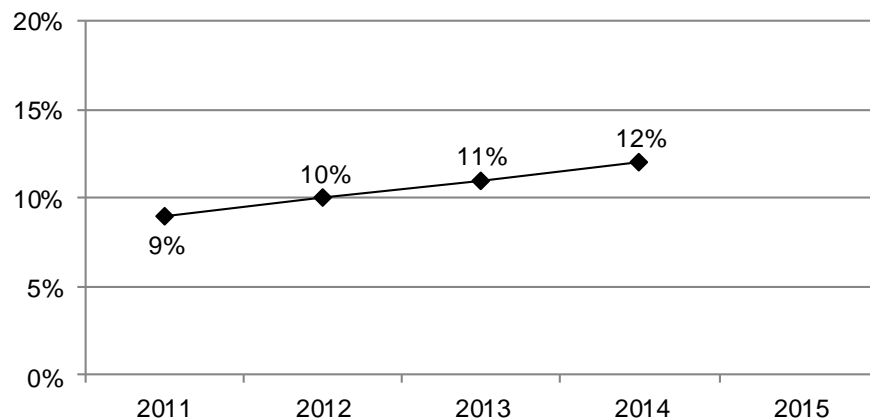
- South Dakota 12%

Figure 5
Percent of Respondents Who Are Class II-III Obese Based on
Body Mass Index, 2002-2010



Source: The Behavioral Risk Factor Surveillance System, South Dakota Department of Health, 2002-2010

Figure 6
Percent of Respondents Who Are Class II-III Obese Based on
Body Mass Index, 2011-2014



Note: Beginning in 2011, the CDC began using a different methodology to weight the data, therefore current data estimates cannot be compared to previous years.

Source: The Behavioral Risk Factor Surveillance System, South Dakota Department of Health, 2011-2014

**Table 6
Respondents Who Are Class II-III Obese, 2011-2014**

		2011-2014	2011	2012	2013	2014
Total		11%	9%	10%	11%	12%
Gender	Male	10%	9%	10%	11%	11%
	Female	11%	10%	11%	11%	13%
Age	18-24	5%	*	*	*	*
	25-34	12%	*	*	*	*
	35-44	12%	*	*	*	*
	45-54	12%	*	*	*	*
	55-64	14%	10%	14%	*	*
	65-74	12%	*	*	*	*
	75+	5%	*	*	*	*
Race	White	10%	9%	10%	11%	12%
	American Indian	15%	*	*	*	*
Ethnicity	Hispanic	12%	*	*	*	*
	Non-Hispanic	11%	9%	10%	11%	12%
Household Income	Less than \$25,000	14%	11%	14%	*	*
	\$25,000-\$49,999	11%	11%	11%	8%	13%
	\$50,000+	10%	7%	9%	12%	11%
Education	Less than High School, G.E.D.	11%	*	*	*	*
	High School, G.E.D.	11%	10%	11%	10%	12%
	Some Post-High School	11%	9%	10%	13%	13%
	College Graduate	9%	7%	8%	10%	11%
Employment Status	Employed for Wages	11%	9%	10%	11%	14%
	Self-employed	9%	*	*	*	*
	Unemployed	15%	*	*	*	*
	Homemaker	8%	*	*	*	*
	Student	4%	*	*	*	*
	Retired	9%	8%	11%	9%	7%
	Unable to Work	23%	*	*	*	*
Marital Status	Married/Unmarried Couple	11%	9%	10%	11%	12%
	Divorced/Separated	13%	*	*	*	*
	Widowed	9%	*	*	*	*
	Never Married	11%	*	*	*	*
Home Ownership Status	Own Home	10%	9%	10%	10%	11%
	Rent Home	13%	11%	12%	*	*
Children Status	Children in Household (Ages 18-44)	10%	*	*	*	*
	No Children in Household (Ages 18-44)	10%	*	*	*	*
Phone Status	Landline	11%	9%	10%	12%	12%
	Cell Phone	10%	*	10%	10%	12%
Pregnancy Status	Pregnant (Ages 18-44)	-	-	-	-	-
	Not Pregnant (Ages 18-44)	12%	*	*	*	*
County	Minnehaha	11%	*	*	*	*
	Pennington	10%	*	*	*	*
	Lincoln	9%	*	*	*	*
	Brown	12%	*	*	*	*
	Brookings	10%	*	*	*	*
	Codington	9%	*	*	*	*
	Meade	9%	*	*	*	*
	Lawrence	8%	*	*	*	*

Note: *Results based on small sample sizes have been suppressed.

Source: The Behavioral Risk Factor Surveillance System, South Dakota Department of Health, 2011-2014