

Overview

<u>Resident Live Births</u>	
Number of Live Births	12,243
Rate per 1,000 Population	14.5
<u>Infant Deaths</u>	
Number of Infant Deaths	80
Rate per 1,000 Live Births	6.53
<u>Resident Deaths</u>	
Number of Resident Deaths	7,079
Rate per 100,000 Population	837.9
<u>Fetal Deaths</u>	
Number of Fetal Deaths	60
Rate per 1,000 Live Births + Fetal Deaths	4.88
<u>Marriages</u>	
Number of Marriages	5,919
Rate per 1,000 Population	7.0
<u>Divorces</u>	
Number of Divorces	2,450
Rate per 1,000 Population	2.9

This report contains selected health statistics that are widely used by the Department of Health, other government agencies, and the public. This information has proven to be useful in determining trends in health status, for planning health care services and for making decisions about public health programs. It also fulfills diverse requirements in the business community and academic research.

Vital statistics data are compiled and maintained under the direction of the Director of the Health Statistics Office (HSO). The data are analyzed by staff from the HSO. Data from HSO can be found in the following sections: Natality, Infant Mortality, Mortality, Induced Abortion, Marriage and Divorce, Health Status Profiles, and Health Status Maps. When referring to Divorce throughout this report, please note that Annulments are included in the Divorce category.

Infectious disease data are collected, compiled, and analyzed within the Office of Disease Prevention. Data on communicable diseases can be found in the Infectious Disease section of the report.

Quick References

Pages

• Tables 2, & 4-7 – Number of Vital Events by County	6-7 and 10-17
• Figure 6 – Graph Comparing State and National Rates	40
• Tables 8, 32, 43, & 66 – Tables Comparing State and National Rates	21, 39, 55, 96
• Tables 78 & 79 – Disease Data by Region and Characteristics	106 – 108
• Maps 1 through 23 – Health Status Maps by County	199 - 222

The contacts listed in the Preface welcome suggestions for additional changes that would make the next compilation even more useful to those involved in improving the health of South Dakotans.

Table 1
Selected South Dakota Health Statistics, 2012-2013

EVENT		2013	2012	Percent Change
BIRTHS:	Number	12,243	12,092	+1.3
	Rate per 1,000 Population	14.5	14.5	0.0
Birth by Race				
	Number of White Births	9,142	9,111	+0.3
	White Birth Rate per 1,000	12.6	12.7	-0.7
	Number of American Indian Births	1,956	1,936	+1.0
	American Indian Birth Rate per 1,000	26.0	26.1	-0.3
Births (15 through 17 year olds)				
	Number	214	264	-18.9
	Rate per 1,000 15 through 17 year olds	6.4	8.0	-20.0
Births (15 through 19 year olds)				
	Number	812	929	-12.6
	Rate per 1,000 15 through 19 year olds	14.1	16.2	-13.0
Low Birth Weight Babies (Less than 2,500 grams)				
	Number	770	751	+2.5
	Rate per 1,000 Births	62.9	62.1	+1.3
DEATHS:	Number	7,079	7,283	-2.8
	Rate per 100,000 Population	837.9	873.9	-4.1
Deaths by Race				
	Number of White Deaths	6,385	6,590	-3.1
	White Death Rate per 100,000	880.2	917.4	-4.1
	Number of American Indian Deaths	572	585	-2.2
	American Indian Death Rate per 100,000	760.3	788.2	-3.5
Deaths (15 through 17 years of age)				
	Number	24	21	+14.3
	Rate per 100,000 15 through 17 year olds	72.1	63.6	+13.4
Deaths (15 through 19 year of age)				
	Number	39	38	+2.6
	Rate per 100,000 15 through 19 year olds	67.9	66.2	+2.6

Table 1 (continued)
Selected South Dakota Health Statistics, 2012-2013

EVENT	2013	2012	Percent Change
INFANT MORTALITY:			
Number	80	104	-23.1
Rate per 1,000 Births	6.53	8.60	-24.1
FETAL DEATHS:			
Number	60	73	-17.8
Rate per 1,000 Births + Fetal Deaths	4.88	6.00	-18.8
MARRIAGES: Number			
Rate per 1,000 Population	5,919	6,236	-5.1
	7.0	7.5	-6.7
DIVORCES: Number			
Rate per 1,000 Population	2,450	2,550	-3.9
	2.9	3.1	-6.5

Note: Birth and death data are for South Dakota residents.
Marriage and divorce data reflect events occurring in South Dakota.
Source: South Dakota Department of Health, Office of Health Statistics

Table 2
South Dakota Vital Statistics by County, 2013

	Births		Deaths		Infant Deaths		Fetal Deaths		Marriages		Divorces	
	Number	Rate	Number	Rate	Number	Rate	Number	Rate	Number	Rate	Number	Rate
South Dakota	12,243	14.5	7,079	837.9	80	6.53	60	4.88	5,919	7.0	2,450	2.9
County												
Aurora	40	14.7	32	1,176.5	*	*	*	*	9	3.3	5	1.8
Beadle	337	18.6	175	967.9	*	*	*	*	135	7.5	52	2.9
Bennett	69	20.0	29	840.1	4	57.97	*	*	18	5.2	*	*
Bon Homme	57	8.1	78	1,107.0	*	*	*	*	35	5.0	9	1.3
Brookings	430	13.0	183	555.1	*	*	*	*	227	6.9	79	2.4
Brown	512	13.5	399	1,052.6	*	*	3	5.83	221	5.8	119	3.1
Brule	70	13.0	50	931.8	*	*	*	*	54	10.1	21	3.9
Buffalo	58	28.7	16	790.5	*	*	*	*	3	1.5	*	*
Butte	133	12.9	93	900.3	*	*	*	*	81	7.8	35	3.4
Campbell	12	9.0	10	749.6	*	*	*	*	6	4.5	4	3.0
Charles Mix	151	16.3	83	898.2	*	*	*	*	42	4.5	5	0.5
Clark	51	14.1	50	1,385.0	*	*	*	*	22	6.1	9	2.5
Clay	166	11.9	101	724.8	*	*	*	*	67	4.8	39	2.8
Codington	410	14.7	224	804.2	*	*	*	*	219	7.9	103	3.7
Corson	93	22.1	52	1,233.7	*	*	*	*	20	4.7	3	0.7
Custer	71	8.4	77	909.3	*	*	*	*	162	19.1	20	2.4
Davison	263	13.3	179	903.0	*	*	*	*	127	6.4	49	2.5
Day	52	9.3	73	1,304.5	*	*	*	*	31	5.5	8	1.4
Deuel	46	10.6	39	902.8	*	*	*	*	36	8.3	15	3.5
Dewey	148	26.5	68	1,217.3	4	27.03	*	*	15	2.7	4	0.7
Douglas	33	10.9	38	1,257.0	*	*	*	*	18	6.0	*	*
Edmunds	46	11.4	44	1,088.8	*	*	*	*	19	4.7	8	2.0
Fall River	63	9.2	118	1,725.4	*	*	3	45.45	63	9.2	35	5.1
Faulk	23	9.6	34	1,425.0	*	*	*	*	13	5.4	*	*
Grant	80	11.0	106	1,455.8	*	*	*	*	60	8.2	20	2.7
Gregory	45	10.6	63	1,485.1	*	*	*	*	19	4.5	10	2.4
Haakon	20	10.6	35	1,847.9	*	*	*	*	10	5.3	5	2.6
Hamlin	124	20.8	68	1,140.7	*	*	*	*	31	5.2	12	2.0
Hand	38	11.2	55	1,621.9	*	*	*	*	12	3.5	10	2.9
Hanson	56	16.4	21	616.7	5	89.29	*	*	15	4.4	4	1.2
Harding	17	13.5	4	317.0	*	*	*	*	3	2.4	4	3.2
Hughes	255	14.6	135	771.1	*	*	*	*	116	6.6	62	3.5
Hutchinson	107	15.0	106	1,483.6	*	*	*	*	29	4.1	10	1.4

Table 2 (continued)
South Dakota Vital Statistics by County, 2013

County	Births		Deaths		Infant Deaths		Fetal Deaths		Marriages		Divorces	
	Number	Rate	Number	Rate	Number	Rate	Number	Rate	Number	Rate	Number	Rate
Hyde	19	13.7	14	1,006.47	*	*	*	*	3	2.2	4	2.9
Jackson	78	24.3	34	1,057.21	*	*	*	*	14	4.4	*	*
Jerauld	24	11.6	18	871.25	*	*	*	*	15	7.3	8	3.9
Jones	10	10.0	9	899.10	*	*	*	*	6	6.0	5	5.0
Kingsbury	61	12.0	77	1,520.24	*	*	*	*	22	4.3	12	2.4
Lake	140	11.6	105	871.01	*	*	*	*	83	6.9	32	2.7
Lawrence	230	9.2	226	907.27	*	*	*	*	482	19.3	80	3.2
Lincoln	753	15.1	181	363.03	3	3.98	4	5.28	196	3.9	143	2.9
Lyman	69	17.7	24	616.65	*	*	*	*	19	4.9	4	1.0
McCook	75	13.3	73	1,291.12	*	*	*	*	21	3.7	11	1.9
McPherson	24	9.8	41	1,668.70	*	*	*	*	7	2.8	*	*
Marshall	62	13.0	47	986.77	*	*	*	*	31	6.5	11	2.3
Meade	320	11.8	190	698.48	*	*	*	*	264	9.7	83	3.1
Mellette	37	17.8	19	913.02	*	*	*	*	17	8.2	*	*
Miner	28	12.0	34	1,457.35	*	*	*	*	11	4.7	6	2.6
Minnehaha	2,863	15.9	1,256	699.18	12	4.19	15	5.21	1,367	7.6	593	3.3
Moody	93	14.5	53	827.61	*	*	*	*	40	6.2	10	1.6
Pennington	1,596	15.1	743	702.53	10	6.27	8	4.99	768	7.3	442	4.2
Perkins	40	13.2	39	1,284.16	*	*	*	*	20	6.6	3	1.0
Potter	20	8.4	29	1,211.36	*	*	*	*	18	7.5	3	1.3
Roberts	201	19.6	104	1,014.54	*	*	3	14.71	85	8.3	18	1.8
Sanborn	35	15.1	35	1,506.02	*	*	*	*	8	3.4	6	2.6
Shannon	352	24.9	124	878.31	4	11.36	*	*	8	0.6	*	*
Spink	80	12.1	84	1,270.80	*	*	*	*	20	3.0	17	2.6
Stanley	35	11.7	14	469.64	*	*	*	*	18	6.0	5	1.7
Sully	17	11.8	13	904.66	*	*	*	*	4	2.8	*	*
Todd	250	25.0	101	1,011.82	6	24.00	4	15.75	13	1.3	*	*
Tripp	65	11.8	67	1,218.62	*	*	*	*	28	5.1	7	1.3
Turner	86	10.3	92	1,100.35	*	*	*	*	51	6.1	31	3.7
Union	150	10.1	92	620.41	*	*	*	*	146	9.8	61	4.1
Walworth	70	12.7	79	1,430.12	*	*	*	*	30	5.4	14	2.5
Yankton	253	11.1	207	912.05	*	*	*	*	162	7.1	69	3.0
Ziebach	31	10.9	12	423.43	*	*	*	*	4	1.4	*	*

Note: Births, deaths, infant deaths, and fetal deaths are by county of residence; marriages and divorces are by county of occurrence.
 Birth, marriage, and divorce rates are per 1,000 population. Death rates are per 100,000 population. Infant mortality rates are per 1,000 live births.
 Fetal mortality rates are per 1,000 live births plus fetal deaths.

*Department of Health policy prohibits publishing vital events in cells with less than three events at a county level.

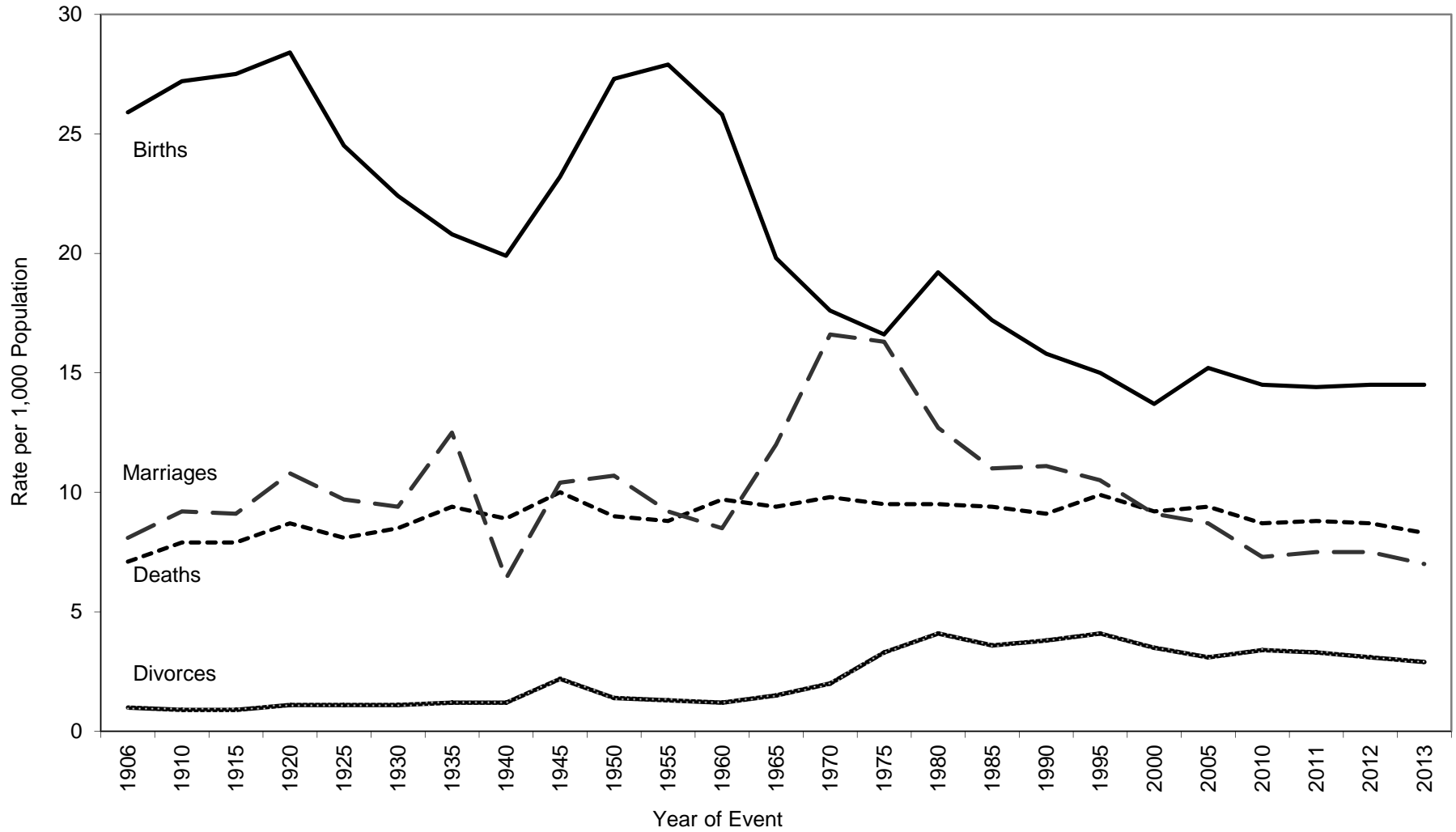
Source: South Dakota Department of Health, Office Health Statistics

**Table 3
Selected Records in Vital Statistics,
South Dakota, 2013**

NATALITY			
Oldest Father:	68	Oldest Mother:	50
Youngest Father:	15	Youngest Mother:	13
Smallest Live Birth:	1 lb. 0 oz.		
Largest Live Birth:	13 lbs. 6 oz.		
Most Popular Names for Infants			
<u>Boy's Names</u>	<u>Number</u>	<u>Girl's Names</u>	<u>Number</u>
Liam	83	Emma	67
Noah	65	Sophia	55
Carter	54	Olivia	53
William	53	Harper	52
Mason	52	Ava	51
Jackson	50	Avery	47
Wyatt	49	Isabella	38
Owen	48	Grace	34
Jacob	44	Ella	30
James	41	Abigail	29
MORTALITY			
Oldest Male Decedent:	106	Oldest Female Decedent:	108
MARRIAGE			
Oldest Groom:	84	Oldest Bride:	86
Youngest Groom:	16	Youngest Bride:	16
DIVORCE			
Longest Duration of a Marriage Ending in a Divorce:	53 Years		

Source: South Dakota Department of Health, Office of Health Statistics

Figure 1
Birth, Death, Marriage, and Divorce Rates for
South Dakota, 1906-2013



Source: South Dakota Department of Health, Office of Health Statistics

Table 4
South Dakota Resident Births by Resident County and Year of Birth, 2004-2013

	Year of Birth									
	2013	2012	2011	2010	2009	2008	2007	2006	2005	2004
Total	12,243	12,092	11,834	11,795	11,930	12,074	12,253	11,914	11,466	11,339
County										
Aurora	40	30	39	29	34	36	31	33	24	32
Beadle	337	327	294	274	268	277	261	201	177	195
Bennett	69	69	76	70	65	67	55	61	64	67
Bon Homme	57	77	62	67	53	73	70	60	72	53
Brookings	430	404	385	379	383	401	378	352	355	321
Brown	512	476	485	467	475	483	537	499	430	466
Brule	70	84	69	74	68	75	85	60	74	59
Buffalo	58	47	57	49	46	52	64	68	55	55
Butte	133	120	136	114	141	152	146	140	118	133
Campbell	12	9	8	16	18	17	10	11	6	9
Charles Mix	151	161	157	156	162	168	151	162	154	177
Clark	51	43	52	48	57	42	43	42	36	51
Clay	166	151	152	138	175	163	151	162	139	147
Codington	410	376	372	375	399	380	436	401	387	394
Corson	93	87	84	78	74	89	98	92	93	83
Custer	71	66	77	85	62	78	89	77	85	66
Davison	263	264	262	258	296	276	294	271	293	309
Day	52	76	59	68	65	60	73	66	68	64
Deuel	46	46	48	51	47	61	45	67	51	63
Dewey	148	151	144	118	119	155	162	155	154	160
Douglas	33	37	36	30	31	29	34	27	30	35
Edmunds	46	46	47	34	46	55	36	41	42	51
Fall River	63	61	49	55	46	55	54	71	62	76
Faulk	23	28	28	24	29	20	21	25	26	24
Grant	80	83	69	81	81	69	89	88	68	67
Gregory	45	44	42	50	43	40	47	37	44	46
Haakon	20	18	23	23	26	21	22	17	20	19
Hamlin	124	127	107	102	104	109	103	98	93	89
Hand	38	28	36	46	27	36	40	37	30	32
Hanson	56	51	44	55	44	48	42	61	47	50
Harding	17	14	9	15	10	17	12	11	9	12
Hughes	255	230	237	225	250	225	238	231	227	195
Hutchinson	107	86	72	81	80	85	60	74	88	72

Table 4 (continued)
South Dakota Resident Births by Resident County and Year of Birth, 2004-2013

County	Year of Birth									
	2013	2012	2011	2010	2009	2008	2007	2006	2005	2004
Hyde	19	9	15	12	12	7	9	13	15	24
Jackson	78	69	68	75	71	74	81	61	62	67
Jerauld	24	23	24	29	29	24	19	34	24	23
Jones	10	10	11	10	14	13	14	12	17	12
Kingsbury	61	54	71	51	63	77	54	55	52	52
Lake	140	128	133	128	130	103	144	137	123	135
Lawrence	230	240	213	252	257	257	290	290	239	265
Lincoln	753	852	781	808	825	763	785	746	687	584
Lyman	69	60	76	72	53	60	59	57	72	80
McCook	75	74	66	80	84	64	79	60	79	86
McPherson	24	25	24	18	18	14	18	28	16	20
Marshall	62	56	60	50	59	47	54	52	50	53
Meade	320	327	314	334	312	372	350	377	390	341
Mellette	37	27	27	38	35	36	50	46	40	43
Miner	28	20	24	19	28	30	27	28	31	28
Minnehaha	2,863	2,811	2,779	2,749	2,761	2,841	2,746	2,624	2,587	2,548
Moody	93	93	86	89	90	79	88	91	92	97
Pennington	1,596	1,532	1,502	1,549	1,564	1,563	1,599	1,584	1,564	1,523
Perkins	40	30	29	32	28	40	24	31	34	29
Potter	20	25	27	24	21	24	33	12	27	26
Roberts	201	176	187	159	169	172	170	160	175	159
Sanborn	35	34	28	24	24	25	37	21	21	29
Shannon	352	350	344	370	344	367	396	419	372	347
Spink	80	91	72	78	60	93	75	74	78	84
Stanley	35	36	43	41	39	36	37	45	39	39
Sully	17	13	18	18	19	12	23	24	21	25
Todd	250	288	313	242	274	298	275	283	257	253
Tripp	65	66	70	61	66	70	67	87	64	84
Turner	86	89	89	101	86	96	97	104	89	80
Union	150	178	169	179	181	159	191	186	173	161
Walworth	70	66	69	56	73	53	63	70	64	63
Yankton	253	275	246	258	261	254	283	267	242	266
Ziebach	31	48	38	54	56	37	38	38	49	41

Note: Failure of births to add to the total is due to county not stated.
Source: South Dakota Department of Health, Office of Health Statistics

Table 5
South Dakota Resident Deaths by Resident County and Year of Death, 2004-2013

	Year of Death									
	2013	2012	2011	2010	2009	2008	2007	2006	2005	2004
Total	7,079	7,283	7,271	7,087	6,913	7,056	6,800	7,038	7,074	6,811
County										
Aurora	32	29	29	26	31	30	31	27	35	33
Beadle	175	182	201	187	205	189	193	191	212	199
Bennett	29	30	31	37	30	25	39	23	25	31
Bon Homme	78	71	69	69	83	71	100	79	80	69
Brookings	183	230	182	165	203	213	183	191	149	187
Brown	399	378	355	396	336	350	357	354	333	334
Brule	50	69	56	47	54	43	52	64	59	50
Buffalo	16	18	18	16	24	20	18	17	15	18
Butte	93	110	123	100	92	102	110	95	106	82
Campbell	10	17	21	11	14	14	9	18	19	12
Charles Mix	83	82	98	99	122	91	92	96	117	96
Clark	50	40	62	56	52	42	34	46	68	44
Clay	101	101	89	105	90	67	83	91	82	100
Codington	224	229	239	237	238	242	253	230	234	222
Corson	52	43	44	40	52	36	38	44	38	45
Custer	77	88	82	82	73	62	88	76	82	67
Davison	179	213	205	190	157	207	203	187	168	208
Day	73	76	86	65	95	69	74	94	82	91
Deuel	39	38	43	36	42	62	51	66	49	60
Dewey	68	65	48	56	48	53	57	53	66	71
Douglas	38	39	58	50	41	44	42	33	52	38
Edmunds	44	55	50	45	50	47	47	57	52	57
Fall River	118	111	113	104	110	104	106	107	114	111
Faulk	34	27	23	28	20	34	30	38	19	29
Grant	106	66	72	66	89	80	83	94	95	102
Gregory	63	72	58	74	56	89	54	74	65	66
Haakon	35	26	27	22	15	23	26	32	25	26
Hamlin	68	76	78	60	73	71	80	76	79	74
Hand	55	38	41	43	28	42	36	44	37	50
Hanson	21	11	24	22	19	25	20	19	26	15
Harding	4	8	11	12	8	8	6	8	11	6
Hughes	135	124	147	136	164	143	130	158	152	118
Hutchinson	106	106	111	113	105	123	92	110	109	129

Table 5 (continued)
South Dakota Resident Deaths by Resident County and Year of Death, 2004-2013

	Year of Death									
	2013	2012	2011	2010	2009	2008	2007	2006	2005	2004
County										
Hyde	14	27	15	20	18	22	25	23	21	25
Jackson	34	34	35	35	29	30	37	39	26	33
Jerauld	18	38	32	27	28	27	25	30	27	31
Jones	9	10	16	5	7	6	14	6	9	12
Kingsbury	77	58	73	79	68	89	76	78	83	93
Lake	105	110	101	113	107	105	93	116	91	102
Lawrence	226	240	201	208	203	196	201	234	187	196
Lincoln	181	201	216	181	166	203	191	226	229	211
Lyman	24	42	46	28	34	21	25	28	29	30
McCook	73	80	68	74	83	71	76	71	70	75
McPherson	41	34	37	33	25	35	34	36	49	37
Marshall	47	56	59	73	65	46	46	53	60	49
Meade	190	180	165	157	178	220	214	223	236	228
Mellette	19	24	25	25	22	24	22	16	24	32
Miner	34	27	37	38	33	37	32	37	39	32
Minnehaha	1,256	1,232	1,301	1,273	1,228	1,233	1,151	1,150	1,146	1,016
Moody	53	53	49	57	54	46	56	69	66	56
Pennington	743	796	795	758	699	716	616	645	693	620
Perkins	39	38	57	48	32	43	52	46	41	36
Potter	29	44	42	28	40	47	32	37	44	33
Roberts	104	141	103	113	105	125	101	94	128	126
Sanborn	35	32	34	18	21	17	21	29	38	24
Shannon	124	130	109	131	108	112	117	121	123	133
Spink	84	84	73	72	89	77	85	75	79	68
Stanley	14	17	22	18	13	26	7	25	19	14
Sully	13	13	8	10	9	8	9	11	11	18
Todd	101	98	81	68	87	82	81	73	63	79
Tripp	67	72	66	81	79	66	68	81	85	65
Turner	92	95	105	90	92	97	105	104	109	100
Union	92	119	107	120	106	113	101	100	93	95
Walworth	79	79	77	76	60	71	58	86	92	98
Yankton	207	199	211	211	189	206	197	175	199	200
Ziebach	12	11	11	24	17	18	15	9	10	4

Table 6
Marriages Occurring in South Dakota by County of Occurrence and Year of Marriage, 2004-2013

	Year of Marriage									
	2013	2012	2011	2010	2009	2008	2007	2006	2005	2004
Total	5,919	6,236	6,145	5,939	5,887	6,148	6,138	6,303	6,551	6,485
County										
Aurora	9	18	17	8	13	16	13	28	18	20
Beadle	135	148	147	138	128	137	129	117	118	135
Bennett	18	21	33	23	17	16	22	26	15	16
Bon Homme	35	54	47	51	30	54	40	42	44	46
Brookings	227	210	178	194	209	195	202	178	246	210
Brown	221	239	239	224	231	225	277	270	244	281
Brule	54	57	46	48	48	52	42	63	57	68
Buffalo	3	6	*	3	3	4	8	*	*	4
Butte	81	80	89	77	60	55	62	51	66	44
Campbell	6	8	6	7	9	7	6	*	15	7
Charles Mix	42	46	58	42	50	54	66	55	53	71
Clark	22	18	21	12	23	16	24	18	20	24
Clay	67	77	86	75	74	90	101	105	107	92
Codington	219	224	268	236	228	245	262	290	261	285
Corson	20	22	30	19	30	21	22	19	27	22
Custer	162	152	137	131	115	123	113	101	109	107
Davison	127	139	156	153	138	153	162	167	164	146
Day	31	40	29	26	36	40	33	35	41	36
Deuel	36	36	31	31	27	39	30	34	30	21
Dewey	15	18	15	7	17	21	21	12	16	13
Douglas	18	20	20	21	25	20	20	21	24	17
Edmunds	19	16	20	17	20	25	24	11	16	25
Fall River	63	60	62	52	51	75	68	68	85	65
Faulk	13	12	20	11	13	8	10	5	17	16
Grant	60	60	67	58	78	88	75	69	84	80
Gregory	19	16	36	30	24	23	23	34	32	30
Haakon	10	17	8	5	9	18	12	14	14	16
Hamlin	31	40	25	37	33	32	36	37	32	39
Hand	12	13	24	20	21	8	19	16	36	16
Hanson	15	6	12	15	14	8	12	21	16	22
Harding	3	9	5	11	8	*	3	10	*	6
Hughes	116	106	109	98	124	137	120	129	136	134
Hutchinson	29	39	33	34	34	31	36	37	40	49

Table 6 (continued)

Marriages Occurring in South Dakota by County of Occurrence and Year of Marriage, 2004-2013

	Year of Marriage									
	2013	2012	2011	2010	2009	2008	2007	2006	2005	2004
County										
Hyde	3	9	7	6	*	5	4	7	5	5
Jackson	14	11	14	18	9	8	9	12	11	14
Jerauld	15	7	10	10	10	10	12	8	12	13
Jones	6	3	6	5	6	6	*	7	4	10
Kingsbury	22	22	27	31	34	36	28	37	36	42
Lake	83	89	64	81	93	71	98	97	77	77
Lawrence	482	487	466	454	461	485	485	532	502	466
Lincoln	196	155	147	168	149	173	157	158	149	160
Lyman	19	14	16	21	15	17	29	23	26	18
McCook	21	36	24	24	23	31	37	34	38	29
McPherson	7	9	9	7	7	10	5	9	12	9
Marshall	31	33	20	33	27	31	19	33	25	29
Meade	264	204	216	218	208	188	219	227	272	307
Mellette	17	29	21	30	21	18	28	22	25	28
Miner	11	9	14	16	13	8	11	7	16	11
Minnehaha	1,367	1,492	1,398	1,321	1,333	1,324	1,254	1,336	1,363	1,276
Moody	40	46	43	37	43	49	36	61	55	47
Pennington	768	863	893	891	850	932	894	883	977	998
Perkins	20	22	16	13	11	17	24	18	25	22
Potter	18	12	18	8	18	11	21	13	12	17
Roberts	85	116	100	104	104	113	92	124	107	113
Sanborn	8	13	7	8	6	9	8	10	13	11
Shannon	8	4	6	6	5	7	8	6	12	3
Spink	20	22	33	24	24	22	35	34	26	27
Stanley	18	24	25	20	28	16	10	17	21	28
Sully	4	3	5	*	*	6	7	3	6	9
Todd	13	11	15	19	22	24	22	19	21	18
Tripp	28	36	25	34	31	35	40	35	42	31
Turner	51	34	38	44	36	37	37	38	47	49
Union	146	169	151	189	176	185	191	183	203	228
Walworth	30	32	50	26	16	30	30	34	27	35
Yankton	162	184	180	155	162	190	189	185	192	186
Ziebach	4	9	5	3	*	6	4	4	7	6

Table 7
Divorces Occurring in South Dakota by County of Occurrence and Year of Divorce, 2004-2013

	Year of Divorce									
	2013	2012	2011	2010	2009	2008	2007	2006	2005	2004
Total	2,450	2,550	2,694	2,774	2,686	2,459	2,438	2,465	2,354	2,358
County										
Aurora	5	7	6	4	9	6	8	4	7	5
Beadle	52	57	70	78	61	57	59	55	39	54
Bennett	*	4	*	*	5	*	7	*	4	4
Bon Homme	9	15	10	14	18	17	19	19	17	18
Brookings	79	85	93	91	75	75	65	79	75	72
Brown	119	127	138	146	116	103	114	110	105	133
Brule	21	13	17	10	19	13	14	10	17	15
Buffalo	*	*	*	*	*	*	3	*	*	*
Butte	35	35	31	40	51	39	37	34	43	41
Campbell	4	5	*	5	*	*	*	4	*	*
Charles Mix	5	11	12	13	9	9	9	12	5	12
Clark	9	*	8	17	7	6	6	11	11	9
Clay	39	50	36	35	44	34	34	31	40	41
Codington	103	79	96	125	93	109	102	91	96	84
Corson	3	3	*	5	*	*	*	*	3	*
Custer	20	13	32	31	33	23	28	25	32	28
Davison	49	63	68	68	56	69	70	72	60	60
Day	8	11	10	12	16	11	7	19	12	10
Deuel	15	12	13	12	9	13	10	12	11	9
Dewey	4	3	6	4	*	*	*	*	*	6
Douglas	*	9	5	5	6	6	7	3	4	9
Edmunds	8	12	12	8	13	5	8	11	10	6
Fall River	35	36	20	30	25	39	17	33	27	28
Faulk	*	5	3	3	6	3	*	*	*	3
Grant	20	19	22	10	18	16	18	28	11	16
Gregory	10	6	6	5	6	5	8	13	13	9
Haakon	5	6	3	6	7	*	5	*	7	6
Hamlin	12	8	14	14	10	5	9	10	15	8
Hand	10	4	10	8	12	9	7	5	5	3
Hanson	4	*	5	*	4	5	8	3	3	5
Harding	4	3	4	*	*	5	*	*	*	4
Hughes	62	58	64	61	62	42	66	75	60	49
Hutchinson	10	9	16	15	10	12	*	3	16	15

Table 7 (continued)
Divorces Occurring in South Dakota by County of Occurrence and Year of Divorce, 2004-2013

County	Year of Divorce									
	2013	2012	2011	2010	2009	2008	2007	2006	2005	2004
Hyde	4	5	3	3	*	*	*	4	*	*
Jackson	*	5	3	3	6	5	*	9	*	8
Jerauld	8	10	14	6	5	*	*	3	*	*
Jones	5	*	5	*	5	*	3	*	*	*
Kingsbury	12	17	10	16	17	8	6	16	18	13
Lake	32	28	22	36	28	28	22	26	28	26
Lawrence	80	94	109	95	82	68	77	90	83	102
Lincoln	143	142	156	128	115	139	117	111	79	80
Lyman	4	6	4	4	10	7	3	9	*	3
McCook	11	17	7	15	16	15	19	13	15	13
McPherson	*	5	6	10	4	5	5	6	4	*
Marshall	11	11	10	13	8	8	8	11	10	7
Meade	83	90	107	83	128	93	102	78	120	97
Mellette	*	3	*	4	*	*	*	*	3	6
Miner	6	5	3	7	7	6	6	9	6	3
Minnehaha	593	591	662	693	619	637	640	596	549	576
Moody	10	16	16	14	16	17	14	15	12	17
Pennington	442	481	478	515	548	463	431	436	400	423
Perkins	3	7	*	*	*	*	*	6	3	12
Potter	3	7	*	4	7	8	7	3	9	*
Roberts	18	20	19	18	11	18	17	21	26	12
Sanborn	6	12	7	9	8	5	4	7	4	3
Shannon	*	*	*	*	3	*	4	*	*	*
Spink	17	16	17	15	23	11	8	16	19	15
Stanley	5	10	7	14	9	4	8	11	4	9
Sully	*	*	5	5	5	*	5	3	7	3
Todd	*	*	*	3	3	*	3	6	6	3
Tripp	7	20	10	9	18	7	12	17	11	11
Turner	31	27	36	21	28	24	19	19	31	25
Union	61	46	46	46	53	53	55	46	55	40
Walworth	14	9	15	14	21	12	7	17	19	12
Yankton	69	71	73	89	72	65	80	75	74	67
Ziebach	*	*	*	*	*	*	*	*	3	*

Note: *Department of Health policy prohibits publishing vital events in cells with less than three events at a county level.
Source: South Dakota Department of Health, Office of Health Statistics

