

Prostate Cancer

NO PROSTATE-SPECIFIC ANTIGEN (PSA) TEST

Definition: Males, aged 40 and older, who have not had a PSA test within the past two years.

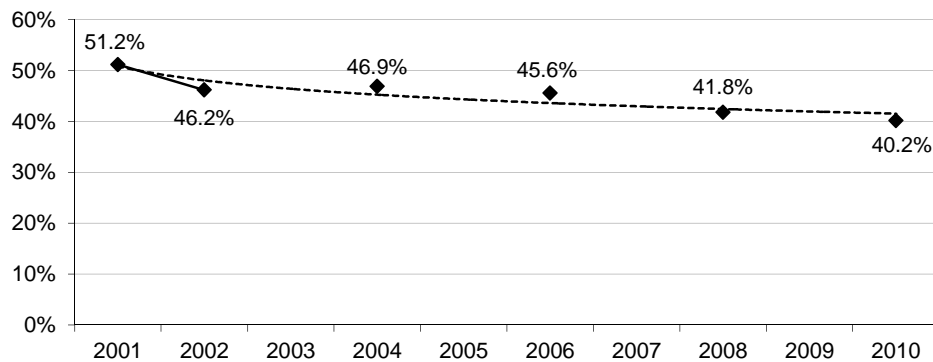
Prevalence of No PSA Test

- South Dakota 55%
- Nationwide median 55%

Healthy People 2020 Objective

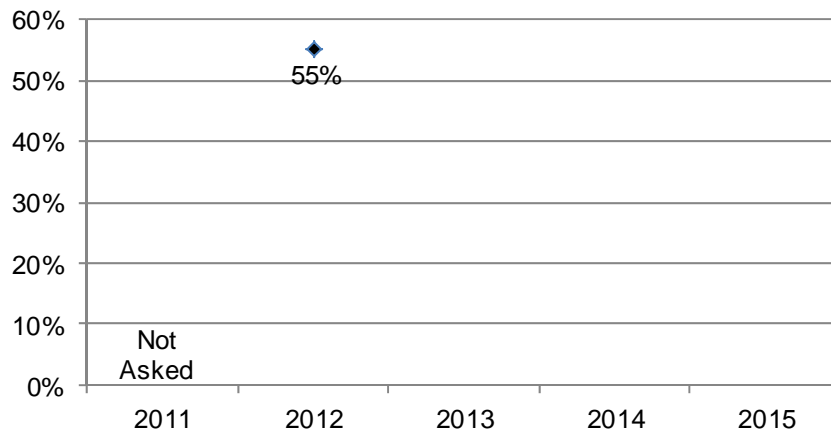
There was no comparable Healthy People 2020 Objective for not having a PSA test within the past two years.

Figure 63
Percent of Male Respondents, Ages 40 and Older, Who Have Not Had a PSA Test Within the Past Two Years, 2001-2002, 2004, 2006, 2008, and 2010



Source: The Behavioral Risk Factor Surveillance System, South Dakota Department of Health, 2001-2002, 2004, 2006, 2008, and 2010

Figure 64
Percent of Male Respondents, Ages 40 and Older, Who Have Not Had a PSA Test Within the Past Two Years, 2012



Note: Beginning in 2011, the CDC began using a different methodology to weight the data, therefore current data estimates cannot be compared to previous years.

Source: The Behavioral Risk Factor Surveillance System, South Dakota Department of Health, 2012

Table 37		
Male Respondents, Ages 40 and Older, Who Have Not Had a PSA Test Within the Past Two Years, 2012		
		2012
Total		55%
Gender	Male	55%
	Female	-
Age	18-44	93%
	45-64	58%
	65+	34%
Race	White	54%
	American Indian	73%
Ethnicity	Hispanic	*
	Non-Hispanic	55%
Household Income	Less than \$25,000	65%
	\$25,000-\$49,999	53%
	\$50,000+	53%
Education	High School, G.E.D., or Less	59%
	Some Post-High School	54%
	College Graduate	50%
Employment Status	Employed for Wages	63%
	Self-employed	61%
	Unemployed	*
	Homemaker	*
	Student	*
	Retired	34%
	Unable to Work	64%
Marital Status	Married/Unmarried Couple	53%
	Divorced/Separated	69%
	Widowed	40%
	Never Married	67%
Home Ownership Status	Own Home	53%
	Rent Home	73%
Children Status	Children in Household (Ages 18-44)	92%
	No Children in Household (Ages 18-44)	*
Phone Status	Landline	52%
	Cell Phone	64%
Pregnancy Status	Pregnant (Ages 18-44)	-
	Not Pregnant (Ages 18-44)	-

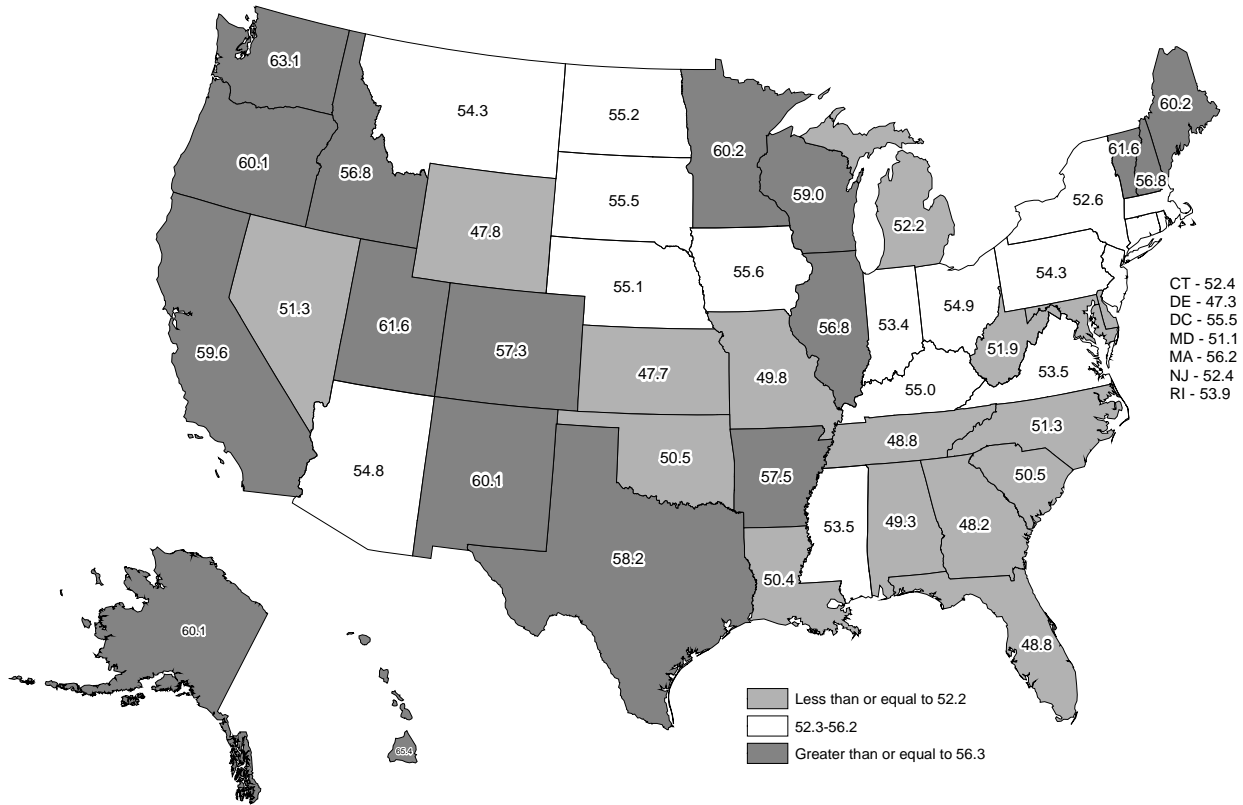
Note: *Results based on small sample sizes have been suppressed.

Source: The Behavioral Risk Factor Surveillance System, South Dakota Department of Health, 2012

National Statistics

The national median for male respondents who have not had a PSA test within the past two years was 54.8 percent as shown in Figure 65 on the next page. South Dakota had 55.5 percent of male respondents who have not had a PSA test within the past two years. Delaware had the lowest percent of male respondents who have not had a PSA test within the past two years at 47.3 percent, while Hawaii had the highest at 65.4 percent.

Figure 65
Nationally, Male Respondents, Ages 40 and Older, Who Have Not Had a PSA Test
Within the Past Two Years, 2012



Source: The Behavioral Risk Factor Surveillance System, South Dakota Department of Health, 2012

Further Analysis

Following are data showing the percent of those who have not had a PSA test for various health behaviors and conditions. For example, 70 percent of respondents who use smokeless tobacco have not had a PSA test, while 54 percent of respondents who do not use smokeless tobacco have not had a PSA test.

Table 38	
No PSA Test, Ages 40 and Older, Within the Past Two Years for Selected Health Behaviors and Conditions, 2012	
Health Behavior or Condition	% No PSA Test
Underweight (BMI < 18.5)	*
Recommended (BMI = 18.5-24.9)	58%
Overweight (BMI = 25.0-29.9)	55%
Obese - Class I (BMI = 30.0-34.9)	55%
Obese - Classes II & III (BMI = 35.0+)	52%
Leisure Time Exercise	56%
No Leisure Time Exercise	54%
Current Smoker	68%
Former Smoker	48%
Never Smoked	56%
Smokeless Tobacco	70%
No Smokeless Tobacco	54%

Table 38 (continued)
No PSA Test, Ages 40 and Older, Within the Past Two Years for
Selected Health Behaviors and Conditions, 2012

Health Behavior or Condition	% No PSA Test
Diabetes	50%
No Diabetes	56%
High Blood Pressure	49%
No High Blood Pressure	60%
Health Insurance (18-64)	62%
No Health Insurance (18-64)	89%
Employer Based Coverage (18-64)	63%
Private Health Plan (18-64)	51%
Medicare (18-64)	*
Medicaid or Medical Assistance (18-64)	*
The Military, CHAMPUS, TriCare, or the VA (18-64)	60%
The Indian Health Service (18-64)	*
Blood Stool Test Within Past Two Years (50+)	24%
No Blood Stool Test Within Past Two Years (50+)	47%
Ever Had a Sigmoidoscopy or Colonoscopy (50+)	31%
Never Had a Sigmoidoscopy or Colonoscopy (50+)	67%
Flu Shot (65+)	22%
No Flu Shot (65+)	53%
Pneumonia Shot (65+)	23%
No Pneumonia Shot (65+)	51%
Previously Had Heart Attack	44%
Never Had Heart Attack	57%
Have Angina or Coronary Heart Disease	40%
Do Not Have Angina or Coronary Heart Disease	57%
Previously Had a Stroke	*
Never Had a Stroke	56%
Cancer	38%
No Cancer	59%
Skin Cancer	39%
No Skin Cancer	57%
Current Asthma	42%
Former Asthma	*
Never Had Asthma	57%
Arthritis	47%
No Arthritis	60%
COPD	52%
No COPD	56%
Depression	55%
No Depression	56%
Kidney Disease	*
No Kidney Disease	56%
Vision Impairment	55%
No Vision Impairment	56%
Been to the Dentist in the Past Year	51%
Haven't Been to the Dentist in the Past Year	64%
Always/Almost Always Wear Seat Belt	54%
Sometimes/Seldom/Never Wear Seat Belt	60%
Drank Alcohol in Past 30 Days	54%
Did Not Drink Alcohol in Past 30 Days	59%
Binge Drinker	67%
Not a Binge Drinker	53%
Heavy Drinker	65%
Not a Heavy Drinker	55%

Table 38 (continued)
No PSA Test, Ages 40 and Older, Within the Past Two Years for
Selected Health Behaviors and Conditions, 2012

Health Behavior or Condition	% No PSA Test
< 3 Sweetened Beverages per Day	54%
3+ Sweetened Beverages per Day	*
Good/Very Good/Excellent Health Status	56%
Fair/Poor Health Status	54%
Physical Health Not Good for 0-29 Days of the Past 30	56%
Physical Health Not Good for 30 Days of the Past 30	57%
Mental Health Not Good for 0-19 Days of the Past 30	55%
Mental Health Not Good for 20-30 Days of the Past 30	68%
Usual Activities Unattainable for 0-9 Days of the Past 30	56%
Usual Activities Unattainable for 10-30 Days of the Past 30	57%
Physical, Mental, or Emotional Problems	50%
No Physical, Mental, or Emotional Problems	57%
Disability with Special Equipment Needed	47%
No Disability with Special Equipment Needed	56%
Heard of "Healthy South Dakota" Program	50%
Not Heard of "Healthy South Dakota" Program	60%
Injured in a Fall in Past 12 Months (45+)	59%
Not Injured in a Fall in Past 12 Months (45+)	48%
Been Tested for HIV (18-64)	64%
Never Been Tested for HIV (18-64)	54%

Note: *Results based on sample sizes less than 100 have been suppressed.

Source: The Behavioral Risk Factor Surveillance System, South Dakota Department of Health, 2012