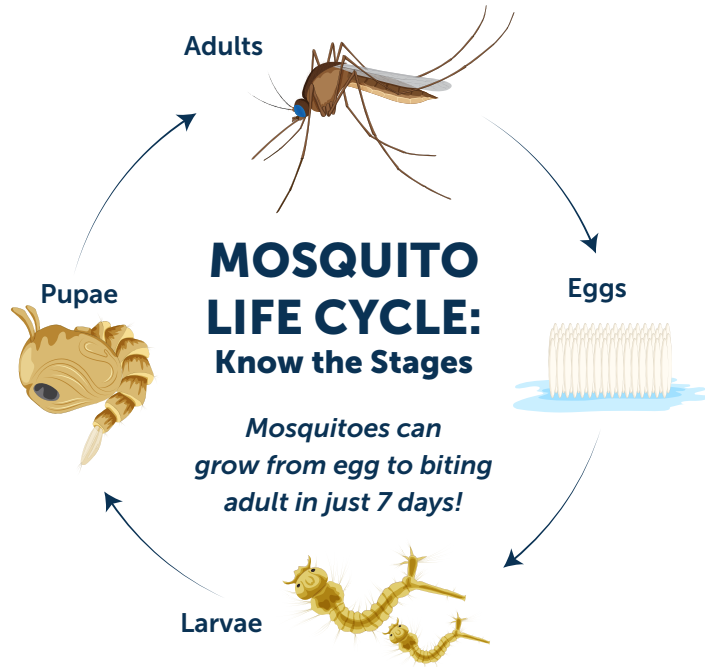


Mosquito Life Cycle & Prevention



- **Eggs:** Laid on or near water. Hatch in 2–3 days.
- **Larvae:** Live in water, feed on tiny organisms.
- **Pupae:** Still in water. Don't eat, but getting ready to emerge.
- **Adults:** Only adults can fly, and only females bite.

WHERE THEY BREED: Common Backyard Sources



Flower Pots



Tires



Bird Baths



Kiddie Pools



Wheelbarrows



Rain Barrels



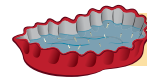
Gutters



Buckets



Old Furniture



Even a bottle cap of water can hatch mosquitoes. Dump it weekly!

WHEN THEY BITE:

Peak Times to Protect Yourself

- ☀ **Daytime:** Aedes mosquitoes bite during daylight.
- 🌙 **Dawn & Dusk:** Culex mosquitoes (West Nile carriers) bite early morning and evening.

TIP: Use repellent and wear long sleeves during these times.

REMEMBER THE 3-DAY RULE:

If water stands for more than 3 days, dump it!

PROTECT YOUR FAMILY

- 💧 Empty all water containers weekly.
- 🏠 Use screens on windows and doors.
- 🌲 Apply EPA-approved repellent (e.g., DEET, picaridin).
- 👤 Dress in light-colored, long-sleeved clothes.