

Quantifying societal benefits of reducing lead exposure to kids and adults

South Dakota Lead Advisory Group and Partners

March 31, 2026

Tom Neltner, National Director

tneltner@unleadedkids.org or 317-442-3973

Unleaded Kids – www.unleadedkids.org



Agenda

- Why monetize societal benefits?
- Health effects of low-level lead exposure
- Studies monetizing societal benefits
- Why IQ, CVD, ADHD, and low birthweight?
- EPA's All Ages Lead Model (AALM)
- Putting it into practice
- Next steps



Why monetize the societal benefits of reducing lead exposure?

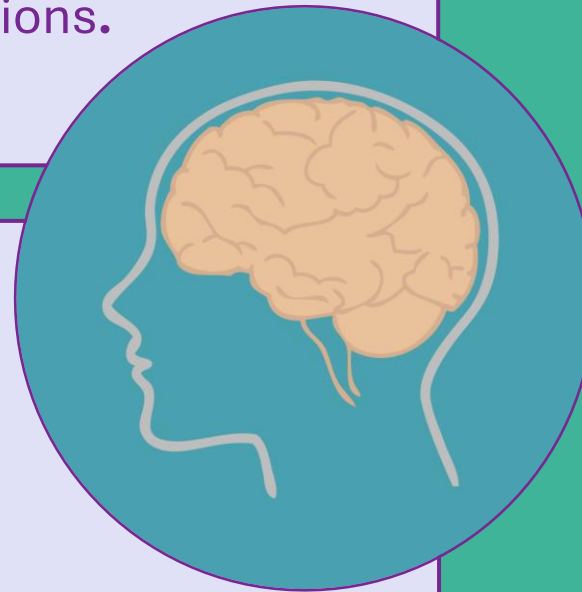


Causal neurological effects of low-level lead exposure

CHILDREN

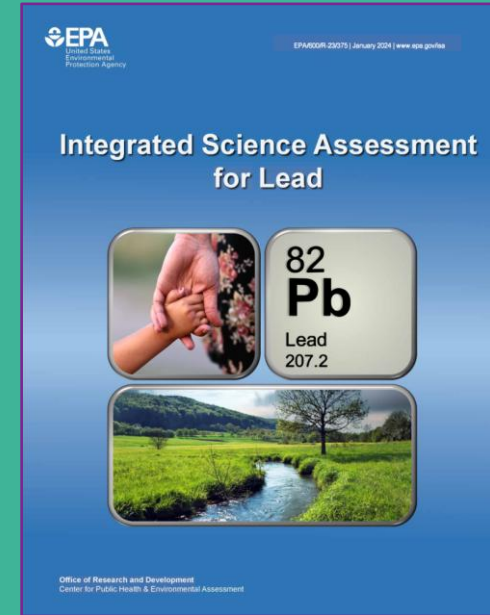
Cognitive effects: Recent epidemiologic studies add to the evidence of harm below 5 microgram per deciliter ($\mu\text{g}/\text{dL}$) blood lead levels (BLLs). Recent animal studies support the finding.

Attention, impulsivity, and hyperactivity behaviors: Recent studies of children with mean BLLs at or below 5 $\mu\text{g}/\text{dL}$ support and extend 2013 conclusions.



ADULTS

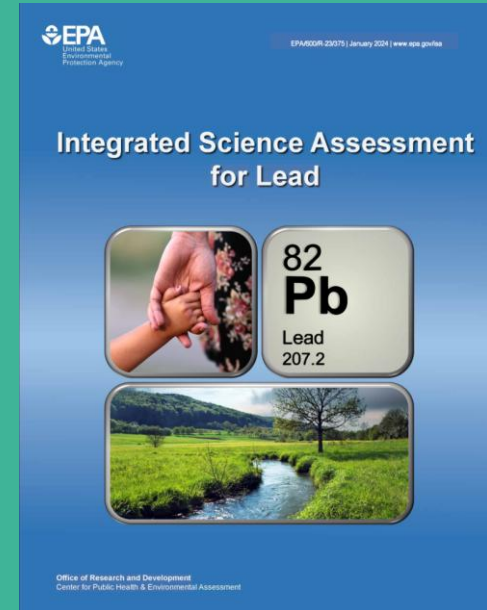
Cognitive effects: Recent epidemiologic studies provide additional evidence of association with cumulative and early childhood exposure.



January 2024

Causal health effects – beyond the brain

- **Cardiovascular effects and cardiovascular-related mortality:** Strongest new evidence comes from studies demonstrating that lead increases blood pressure. There is substantially more evidence of cardiovascular-related death and changes in physiology.
- **Renal effects:** Recent studies support and extend 2013 conclusions particularly for mean BLLs at or below 5 $\mu\text{g}/\text{dL}$.
- **Development effects:** Recent studies show delays in onset of puberty in both boys and girls, particularly at lower BLLs.
- **Male reproductive function effects:** Recent epidemiologic studies show consistent association with decreased sperm/semens production and quality.
- **Total nonaccidental mortality:** Recent epidemiologic studies build on evidence including at mean BLLs less than 2.5 $\mu\text{g}/\text{dL}$.



Studies monetizing societal benefits

Levin & Schwartz (2023)

- 16 health endpoints EPA determined are causally related to lead exposure
- 1 health endpoint that EPA has used elsewhere: preterm birth
- See <https://pubmed.ncbi.nlm.nih.gov/37080271/>

USAID (2024)

- Claims a staggering 1.6 million lives each year
- Accounts for upwards of one fifth of the educational gap between rich and poor countries
- Creates at least a \$1 trillion drag on the global economy



Why IQ, CVD, ADHD, and low birthweight?

- EPA completed rigorous review process for these four harms:
 - Reviewed all available studies that could be used to develop quantitative relationships between changes in lead exposure and/or changes in blood lead levels and changes in key health endpoints.
 - Evaluated the studies for quality and potential biases.
 - Developed a separate report for each health endpoint. In addition to the quality review findings, each report provides quantitative estimates, based on the identified functions, of potential changes in the health endpoint.
 - Had the reports for quantified health endpoints reviewed by EPA experts and external peers.
 - Successfully completed inter-agency review of the approaches through White House's Office of Management and Budget.



IQ: Calculating increased lifetime earnings

- <https://unleadedkids.org/special-series-iq/2025/03/04/>
- EPA first used in 1998 for proposed lead-hazard standards

Type of Effect	Description	Estimate ('95 USD)
Effect of a 1-point reduction in IQ	2.379% of avg lifetime earning lost	\$9,360
Cost of additional education	Direct costs (\$316) & opportunity costs (\$627) of additional education	\$1,014
Total effect of 1-Point Reduction in IQ	Additional education from the effects on earnings lost	\$8,346
Special Education (IQ < 70 points)	Cost of special education beginning at age 7 and ending at age 18	\$53,836
Compensatory Education (Blood lead > 20 mcg/dL)	Cost of compensatory education beginning at age 7 and ending at age 9	\$15,298
Medical Intervention (for several blood lead ranges)	Cost of blood lead screening and medical intervention for children less than 6 years old	\$58 to \$9,843

IQ: Calculating increased lifetime earnings

- As an example of the new formula, a 10% reduction in a blood lead level:
 - Increase the average per child's IQ from 0.14 to 0.36 points resulting in increased lifetime earnings from \$5,900 to \$15,100
 - If increase typical for all 3.6 million children born in a year, the societal benefit would be \$21 billion to \$54 billion/year
- Estimated IQ-related societal benefits for EPA's:
 - Lead and Copper Rule Improvements were \$6.8 billion to \$11 billion/year
 - Dust Lead Standard and \$831 million to \$3.1 billion/year
- Values in 2022 USD, add 9% for 2025 USD.



IQ: Calculating increased lifetime earnings

- Based on EPA Economic Analysis for Lead and Copper Rule at § 5.5.1

Exhibit 5-25 Updated Estimates for Lifetime Earnings, Additional Education Costs, and Lost Earnings from Additional Education (2022 USD), discounted at 2 percent to age 7

Estimate	Updated Salkever Estimates		
	Male	Female	Male and Female Combined
1. Lifetime Earnings	\$2,174,849	\$1,424,497	-
2. IQ Effect	1.87%	3.41%	-
3. IQ Effect*Lifetime Earnings	\$40,700	\$48,559	\$44,551
4. Additional Education Costs	\$1,702	\$1,940	\$1,819
5. Lost Earnings (from additional education)	\$594	\$415	\$506
6. Value of an IQ Point (3 - (4+5))	\$38,404	\$46,204	\$42,226

Note: The EPA uses of the term “2 percent discount rate” with regard to the calculation of the IQ point high and low estimates is shorthand for a declining discount rate which begins with a 2 percent discount rate for the years 2024-2079, a 1.9 percent discount rate used for the years 2080-2096, and a 1.8 percent discount rate used in years 2095-2102. This declining rate structure was implemented to comply with updates to OMB Circular A-4 guidance.

IQ: Calculating increased lifetime earnings

- Download [spreadsheet](#)

	A	B	C	D	E
14	Variable	Value	Description		
15	PbB ₁	2.75	Pre-Rule Blood Lead Level in µg/dL		
16	PbB ₂	1.22	Post-Rule Blood Lead Level in µg/dL		
17					
18	Equation 9 - LCRI High Benefits Calculation based on corrected Lanphear et al (2005, erratum 2019)				
19	(PbB ₁)/(PbB ₂)	2.254098361	-2.64		
20	β =	-3.25	See Exhibit 5-24 below.		
21					
22	Change in lifetime earnings from IQ point change discounted at 2% to age 7				
23	Value of IQ Point - Exhibit 5-25 Row 6	\$42,226	\$ 111,537	Average Societal Benefits Per Child	
24					
25	Equation 10 - LCRI Low Benefits Calculation based on Crump et al. (2013)				
26	(PbB ₁ +1)/(PbB ₂ +1)	1.69	-1.70		
27	β =	-3.25	See Exhibit 5-24 below.		
28					
29	Change in lifetime earnings from IQ point change discounted at 2% to age 7				
30	Value of IQ Point - Exhibit 5-25 Row 6	\$42,226	\$ 71,945	Average Societal Benefits Per Child	
31					

CVD: Calculating value of fewer premature deaths

- First used in 2024 rules on dust-lead and lead in drinking water
- As an example, a 10% reduction in the adult median blood lead level would reduce:
 - Cardiovascular disease (CVD)-related premature deaths between 6,213 and 16,344 nationally for societal benefits of \$80 billion to \$212 billion/year
- For context, the estimated CVD-related societal benefits for EPA's
 - Lead and Copper Rule Improvements were \$9.5 billion to \$25 billion/year
 - Dust Lead Standard were \$614 million to \$6.9 billion/year.
- In 2022 USD, add 9% for 2025 USD.

CVD: Calculating value of fewer premature deaths

- CDC's Lead Exposure and Prevention Advisory Committee (LEPAC) adopted a Protecting Lead Exposure in Adults **Draft Report** that found that
 - Lead exposure is a cardiovascular risk factor **on par with high cholesterol, smoking, and high blood pressure**
 - Risk “has received relatively sparse attention in health professional education and outreach to the lay public.”
- Value of Statistical Life (VSL) is an estimate of the public's willingness to pay for small reductions in mortality risks.
 - Based on the aggregate dollar amount that a large group of people would be willing to pay for a reduction in their individual risks of dying in a year.
- ***Use only for BLLs < 5 mcg/dL***

CVD: Calculating value of fewer premature deaths

Download [spreadsheet](#)

7	Instructions:		
8	1. Use EPA's All Ages Lead Model to Estimate Pre-Rule and Post-Rule Blood Lead Levels for Typical Child		
9	2. Enter Pre-Rule and Post-Rule Blood Lead Levels in Yellow Highlighted Cell		
10	3. Enter Population Expected to Benefit from Change in Blood Lead Level in Yellow Highlighted Cell		
11	4. Use the Central Estimate for Both Aoki et al 2016 and Lanphear et al. 2018 from Blue Highlighted Box		
12	5. See Low-End and High-End Estimated Changes in Lifetime Earnings in Blue Highlighted Box.		
13			
14	Variable	Value	CVD Mortality Risk Reduction
15	$x_1 =$	1.17	Baseline blood lead level
16	$x_2 =$	1.053	Post-rule blood lead level
17	pop	139,712,601	Population for whom the change in blood lead occurs.
18	y_1	0.00272	Baseline hazard rate of CVD premature mortality for 40-80 year olds in baseline scenario (i.e., without the rule)
19	$\beta =$	See below for each	Beta coefficient, which represents the change in CVD mortality risk per unit change in blood lead
20	Logz =	10	Log transformation to the base z (e.g., log10)

CVD: Calculating value of fewer premature deaths

High benefits calculation based on Lanphear et al. 2018

31 Lanphear et al. 2018 (High Benefit Estimates) (blood lead levels < 5 µg/dL)				
32	Central β	0.96	Central beta estimate	
33	Lower β	0.54	Lower beta estimate (based on lower bound of 95% confidence interval for hazard ratio)	
34	Upper β	1.37	Upper beta estimate (based on upper bound of 95% confidence interval for hazard ratio)	
35				
			CVD Mortality Risk Reduction	CVD Deaths Avoided
36				
37	Central	0.00011690	16,332	\$ 211,986,817,320
38	Lower	0.00006639	9,275	\$ 120,387,301,577
39	Upper	0.00016528	23,091	\$ 299,723,347,714

Low benefits calculation based on Aoki et al. 2016

22 Aoki et al. 2016 (Low Benefit Estimates)				
23	Central β	0.36	Central beta estimate	
24	Lower β	0.05	Lower beta estimate (based on lower bound of 95% confidence interval for hazard ratio)	
25	Upper β	0.68	Upper beta estimate (based on upper bound of 95% confidence interval for hazard ratio)	
			CVD Mortality Risk Reduction	CVD Deaths Avoided
26				Value
27	Central	0.00004444	6,209	\$ 80,588,260,862
28	Lower	0.00000622	868	\$ 11,272,355,235
29	Upper	0.00008333	11,642	\$ 151,116,277,971

ADHD: Preventing cases in children (and adults)

- First used in 2024 rules on dust-lead and lead in drinking water
- As an example, a 10% reduction in the median blood lead level of children aged 6 to 11 years would reduce diagnosed attention deficit hyperactive disorder (ADHD) cases
 - Between 7,410 and 18,809/year nationally for societal benefits of \$953 million to \$3.46 billion per year.
- For context, the estimated ADHD-related societal benefits for EPA's:
 - Lead and Copper Rule Improvements were \$196 million to \$600 million/year
 - Dust Lead Standard were \$129 million to \$274 million/year.
- In 2022 USD, add 9% for 2025 USD.

ADHD: Preventing cases in children (and adults)

Based on EPA Economic Analysis for Lead and Copper Rule at §§ 5.5.3 and 5.5.4

Exhibit 5-26: Present Value of Avoided ADHD Cases 2022 USD, Per Case

Assumed Persistence of ADHD Into Adulthood	Age at ADHD Diagnosis	2% Discount Rate
90%	11 (High- Froelich)	\$184,149
29.3%	7 (Low- Ji)	\$128,559

Note: The EPA uses of the term “2 percent discount rate” with regard to the calculation of the ADHD high and low estimates is shorthand for a declining discount rate which begins with a 2 percent discount rate for the years 2024-2079, a 1.9 percent discount rate used for the years 2080-2085. This declining rate structure was implemented to comply with updates to OMB Circular A-4 guidance.

ADHD: Preventing cases in children (and adults)

Download [spreadsheet](#)

7	Instructions:					
8	1. Use EPA's All Ages Lead Model to Estimate Pre-Rule and Post-Rule Blood Lead Levels for 6 to 11 Year Old Child					
9	2. Enter Pre-Rule and Post-Lead Blood Lead Levels in Yellow Highlighted Cell					
10	3. Enter Population Expected to Benefit from Change in Blood Lead Level in Yellow Highlighted Cell					
11	4. See Low-End and High-End Estimated Changes in Lifetime Earnings in Blue Highlighted Box.					
12						
13						
14	5.5.3 Concentration-Response Function for Lead and ADHD					
15	Variable	Value				
16	Blood Pb _i	0.475	Initial blood lead (µg/dL)			
17	Blood Pb _f	0.4275	Final blood lead (µg/dL)			
18	Population	3,600,000	Number of children in the population of interest			
19	ln(Blood Pb _i)	-0.744				
20	ln(Blood Pb _f)	-0.850				
21	X	0.105	ln(Blood Pb _i)-ln(Blood Pb _f)			
22	p ₀	0.096	Baseline rate of ADHD in the population of interest (assumed to be 9.6% based on Danielson et al (2018).			

ADHD: Preventing cases in children (and adults)

High benefits calculation based on Froelich et al. 2009

Equation 11 using Froelich et al. (2009) - High-End Risk and High-End Value			
37	β_1	0.558	Beta estimate from study: 0.223 using Ji et al. (2018) or 0.588 using Froelich et al. (2009)
38	$e^{-\beta(x)}$	0.943	
39	Y	0.948	$(1-p_0)*e^{-\beta(x)}+p_0$
40	z	0.101	$p_0/((1-p_0)*e^{-\beta(x)}+p_0)$
41	y	-0.005	Estimate for one child (18,809.00)
42	Δ ADHD	(18,809)	Change in number of children with ADHD among population of interest with change in blood lead level
43	Benefits of Avoided ADHD	\$ 184,149	Present value of avoided ADHD cases in 2022 USD at 2% discount rate)
44	Age at ADHD Diagnosis	11	
45	Societal Benefits	\$ 3,463,659,457	Per year

Low benefits calculation based on Ji et al. 2018

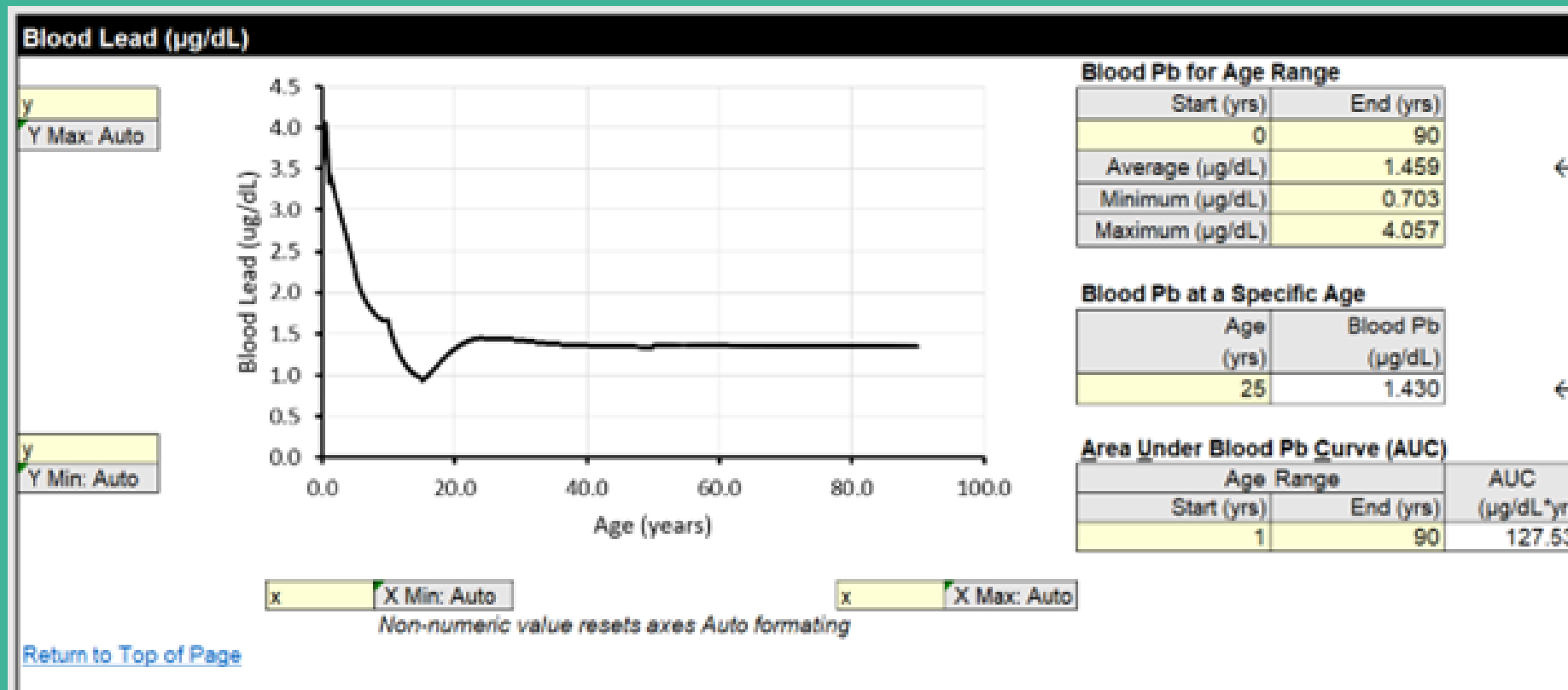
Equation 11 using Ji et al. (2018) - Low-End Risk and Low-End Value			
25	β_1	0.223	Beta estimate from study: 0.223 using Ji et al. (2018) or 0.588 using Froelich et al. (2009)
26	$e^{-\beta(x)}$	0.977	
27	Y	0.979	$(1-p_0)*e^{-\beta(x)}+p_0$
28	z	0.098	$p_0/((1-p_0)*e^{-\beta(x)}+p_0)$
29	y	-0.002	Estimate for one child (7,410.49)
30	Δ ADHD	(7,410)	Change in number of children with ADHD among population of interest with change in blood lead level
31	Benefits of Avoided ADHD	\$ 128,559	Present value of avoided ADHD cases in 2022 USD at 2% discount rate)
32	Age at ADHD Diagnosis	7	
33	Societal Benefits	\$ 952,684,950	Per year

Preventing low birthweight babies

- First used in 2024 rules on dust-lead and lead in drinking water
- For context, the estimated ADHD-related societal benefits for EPA's:
 - Lead and Copper Rule Improvements were \$3.9 to \$4.4 million/year
 - Dust Lead Standard could not be monetized using cost-of-illness approach
- In 2022 USD, add 9% for 2025 USD.

EPA's All Ages Lead Model

- Version 3 released by EPA in 2024 at <https://www.epa.gov/land-research/all-ages-lead-model-aalm>



Quantifying societal benefits of reducing lead exposure to kids and adults

South Dakota Lead Advisory Group and Partners

March 31, 2026

Tom Neltner, National Director

tneltner@unleadedkids.org or 317-442-3973

Unleaded Kids – www.unleadedkids.org

