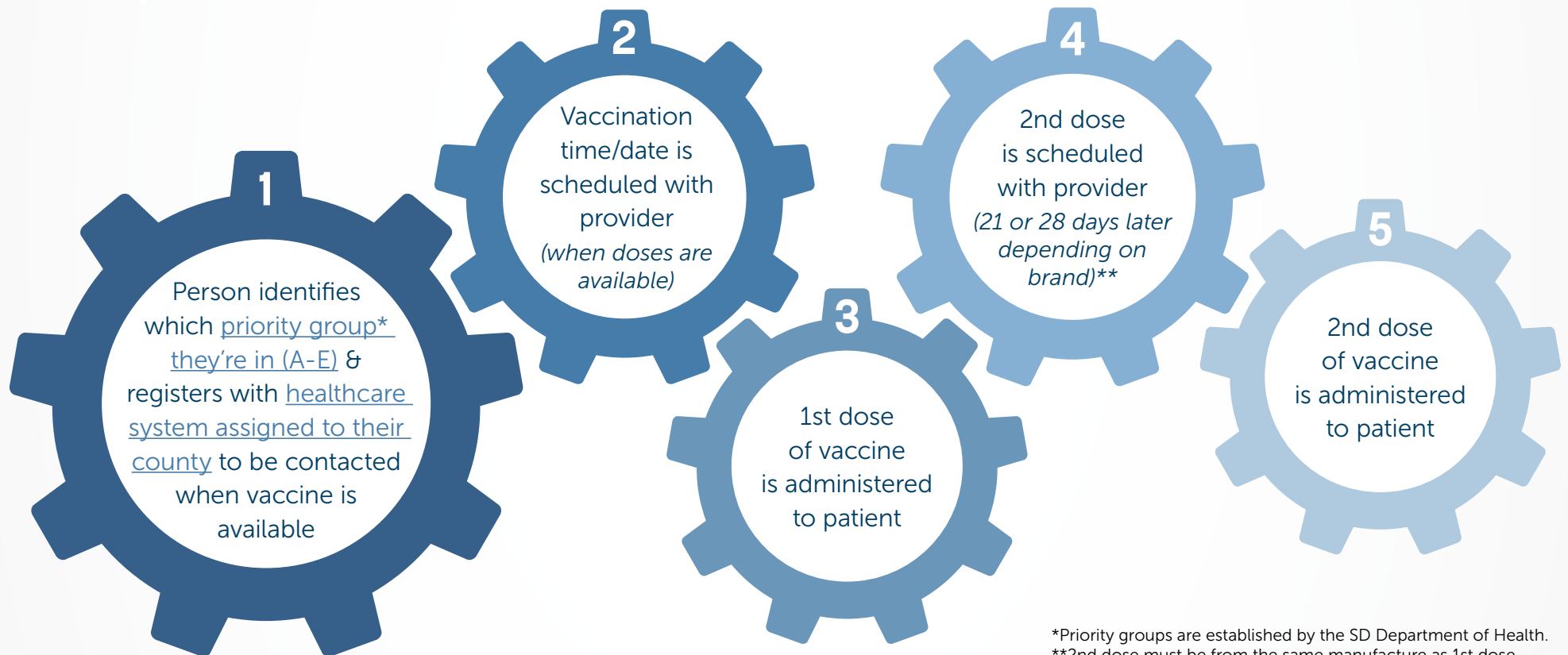


# COVID-19 Vaccination Process

for South Dakota Residents

from Provider to Receiver



\*Priority groups are established by the SD Department of Health.  
\*\*2nd dose must be from the same manufacture as 1st dose.



SOUTH DAKOTA  
DEPARTMENT OF HEALTH

[covid.sd.gov](https://covid.sd.gov)