



SOUTH DAKOTA
DEPARTMENT OF HEALTH

***VACCINATION PLAN UPDATE
AS OF 12/22/2020***



Meeting Agenda:

- **Update on Vaccine Allocation & Distribution**
- **What Group Do I Fall Under?
When Do I Receive the Vaccine?**
- **We Need Your Help!**
- **Q & A**



Allocation & Distribution



Vaccine Allocation – as of 12/18/20

	Pfizer	Moderna	Pfizer
	12/13/2020	12/20/2020	12/20/2020
Sanford	3100	4700	
Avera	2925	6300	
Monument	975	2300	
Prairie Lakes	700	1200	
Mobridge	100	100	
LTC Staff/Residents - Federal Pharmacy Program			4875
Avera LTC Pharmacy LEWIS Drug			975



Vaccine Administration & Distribution Map

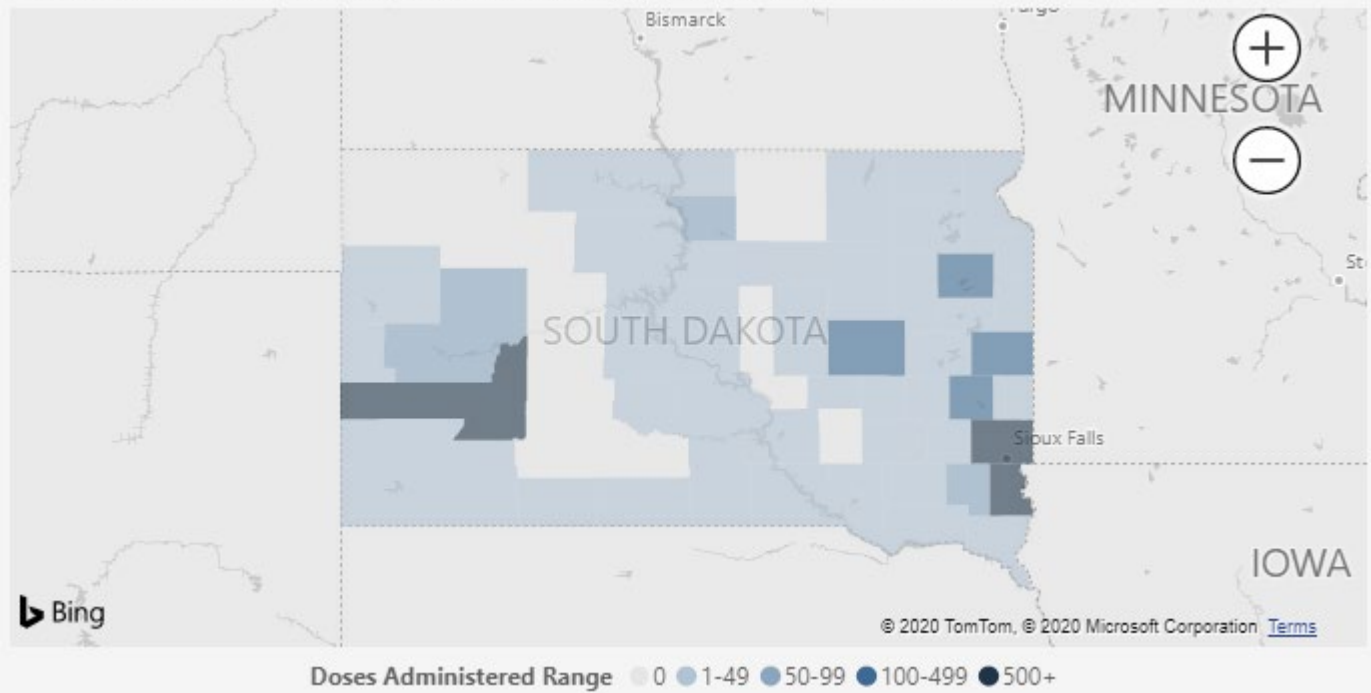
Total Doses Administered

7,516

Total Persons Administered a Vaccine

7,516

Doses & Persons Administered Vaccine by County of Residence





How Can I Get Daily Updated Information?



SOUTH DAKOTA COVID-19 DASHBOARD

SOUTH DAKOTA COVID-19 UPDATES

Please wait. The data dashboard below takes a moment to load and is best viewed on desktop or in landscape mode on mobile (i.e. holding the phone sideways).

SD Overview

Demographics

Trends

Hospital Capacity

Hospitalized & ILI

Tables

Vaccines

Deaths

New Confirmed Cases

301

New Probable Cases

46

Active Cases

8,373

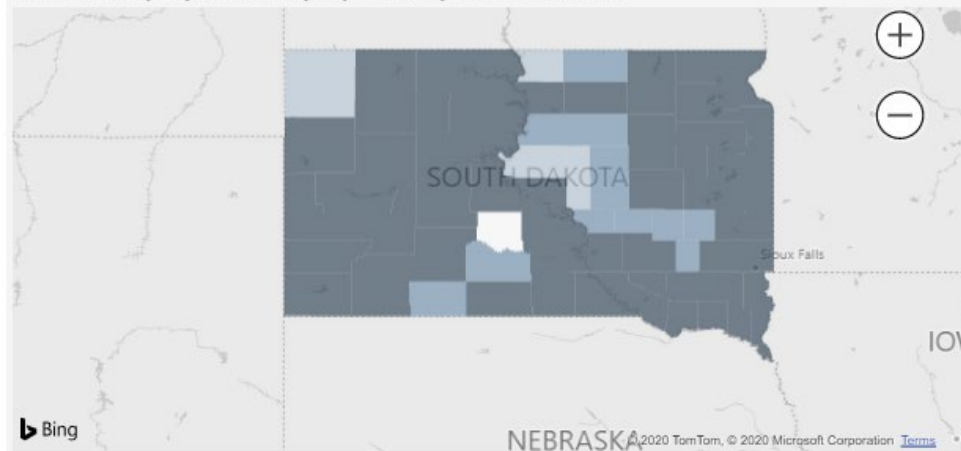
Recovered Cases

85,320

Currently Hospitalized

344

Community Spread Map by County of Residence



Community Spread ○ None ● Minimal ● Moderate ● Substantial

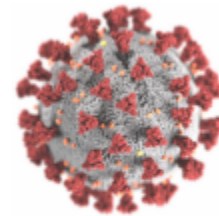


What Group Am I In?



PRIORITY GROUPS FAQ's:

- **How were they determined?**
 - **ACIP Guidance Documents**
 - **CDC, NIH, NASEM Recommendations**
 - **COVID-19 Vaccination Plan**
 - *Available at [DOH.SD.GOV](https://www.doh.sd.gov)*
- **PHASE I**
 - **5 Separate Defined Priority Groups**
 - **Identified as Priority Groups 1A-1E**
 - **Vulnerable Populations First**



COVID-19 Vaccination Plan

SOUTH DAKOTA



Who is considered Healthcare personnel?

Healthcare workers include all paid and unpaid persons serving in healthcare settings who have the potential for direct or indirect exposure to patients or infectious materials.

Examples of [healthcare personnel](#) include:

- Technicians
- Dentists
- Phlebotomists
- Students
- Dietary and food services staff
- Environmental services staff
- Administrative staff



PRIORITY GROUPS A-C:

- + **Frontline Healthcare Workers**
(working in an emergency department, ICU, COVID unit, or general acute care)
- + **Long-Term Care Facility Healthcare Workers**



- + **Other healthcare workers,**
including laboratory and clinic staff
- + **Public Health Workers**
- + **Emergency Medical Services**
- + **Law Enforcement**
- + **Correctional Officers**

A



B

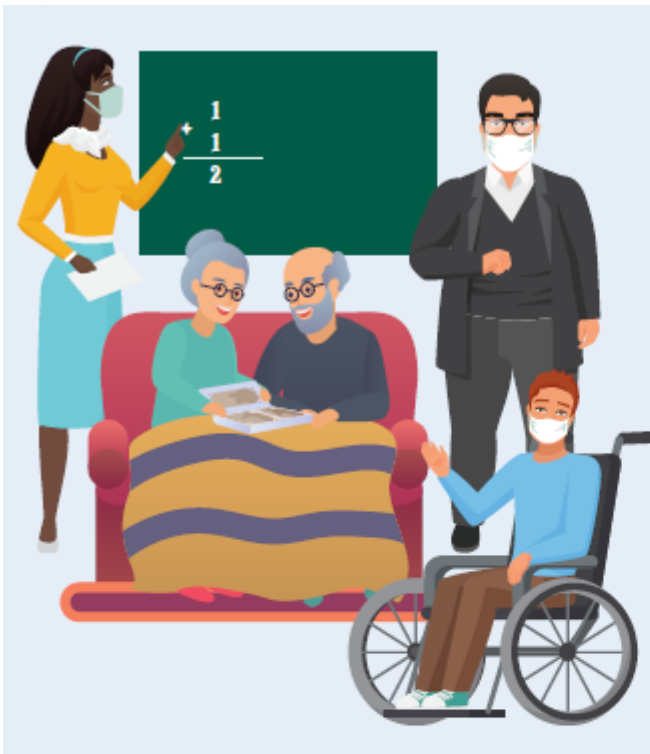
- + **Long-Term Care Residents**
(nursing home and assisted living)

C





PRIORITY GROUPS D-E:



D

- + **Persons with 2 or More Underlying Medical Conditions** (*cancer; chronic kidney disease; COPD*); **Heart Conditions**, such as heart failure, coronary artery disease, or cardiomyopathies; **Immunocompromised State** (*weakened immune system*) from solid organ transplant; **Obesity or Severe Obesity**; **Sickle Cell Disease**; **Type 2 Diabetes Mellitus**
- + **Teachers and Other School/College Staff**
- + **Persons Aged 65 Years and Older**
- + **Residents in Congregate Settings, Residents in Licensed Independent Living Facilities, and Residents of Licensed Group Homes**
- + **Funeral Service Workers**

E

- + **Fire Service Personnel**
- + **Other Critical Infrastructure Workers**, including water and wastewater, energy, finance, food service, food and agriculture, legal, manufacturing, shelter and housing, transportation and logistics, information technology and communications





HOW WILL I KNOW TO GET VACCINE?:

- **The DOH is allocating considerable resources in making information readily available to the public through traditional media outlets and social media channels.**
 - **This also includes working with hospitals, professional associations, etc.**
 - **Community media groups / public notices**
- **PHASE I Vaccinators will also reach out to the priority groups notifying them when/where they can get vaccinated.**



GROUPS & POPULATIONS EXAMPLES

1C

- **Optometrists**
- **Dentists**
- **DME Providers**
- **Home-Care Providers**
- **Blood/Plasma Center Personnel**
- **Group Home Staff**
- **Chaplains in Healthcare Settings**
- **School Nurses**

1D:

- **Independent living facilities**
- **Funeral service workers**
- **Teachers and other school/college staff**

1E:

- **Firefighters (Not EMS/Medical Responders)**



GROUP E (Critical Infrastructure Workers):

- **How do I know if I am in this group?**
 - **CISA Guidance on Critical Infrastructure Workers**
 - **Visit [CISA.GOV/Critical-Infrastructure-Sectors](https://www.cisa.gov/critical-infrastructure-sectors)**
- **Sectors Covered:**
 - **Agriculture and Food Manufacturers**
 - **Utilities**
 - **Transportation & Water/Wastewater Systems**
- **Exemptions?**
 - **Very few, for example:**
 - **A fire fighter who is in group E, but also serves as a EMT paramedic would be eligible in group C.**

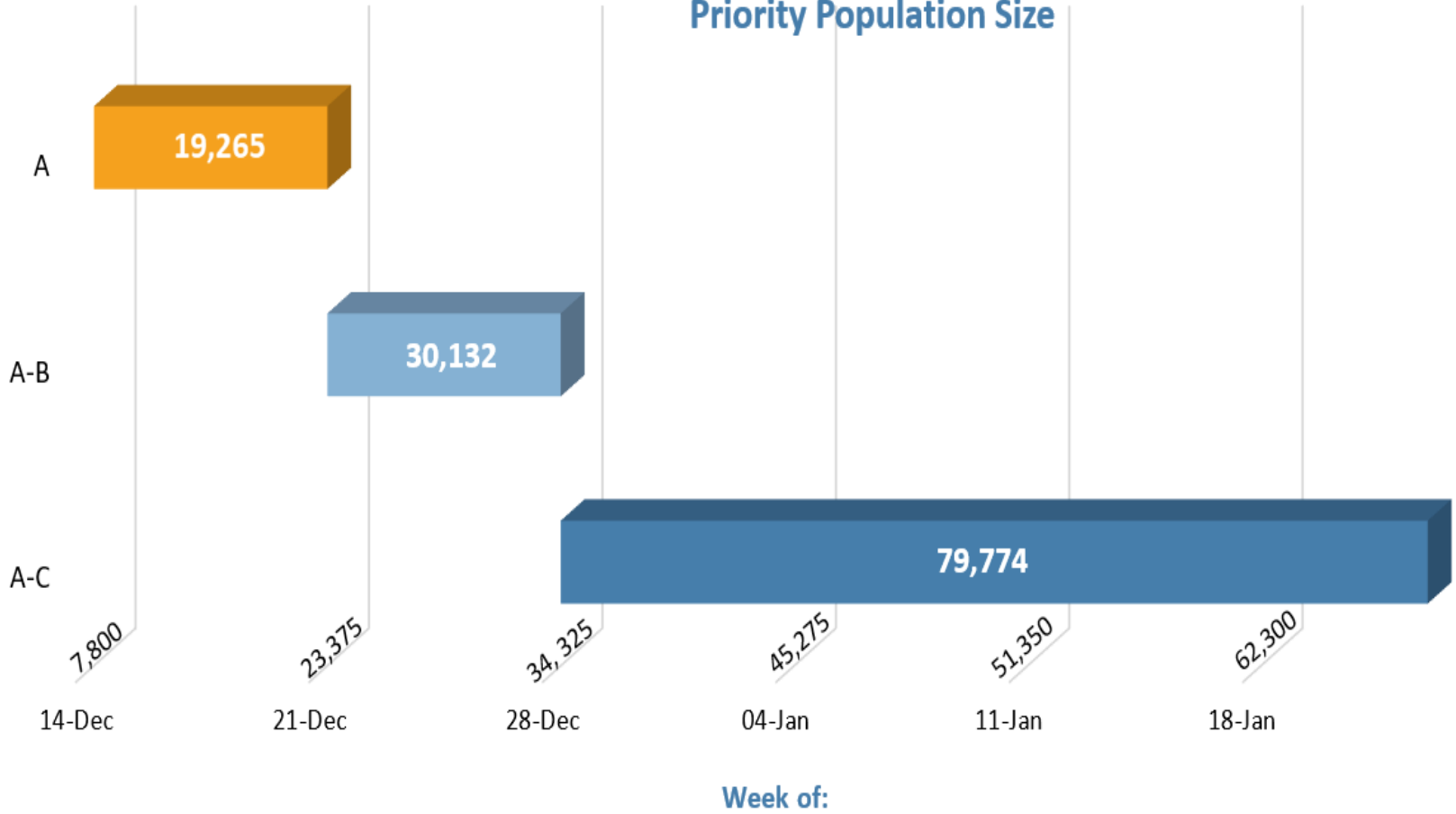


When Will I Get the Vaccine?



Projected COVID 19 Cumulative Vaccine Allocations by Week and Estimated Phase 1 Priority Population Size

Phase 1 Priority Population Groups





DOH Needs Your Help!



How Can You Help?:

➤ COMMUNICATIONS

- **Share, Share, Share – Information is key!**
- **Collect, Analyze, Send to DOH, Share Answer**
- **Just Ask!**

➤ RESOURCES

- **What do you have available that could help others?**
- **Supplies, Communication Channels/Materials**
- **Platforms / Communications ‘Real Estate’**
 - **Traditional Media**
 - **Social Media Platforms / New Media**
 - **Government Information (Federal/State/Local)**



Q & A:

***Please Share Your Name and
Organization Along with Question***