

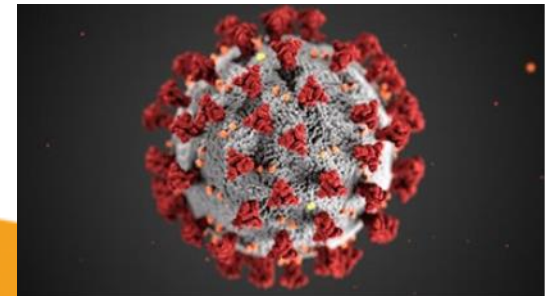


SOUTH DAKOTA
DEPARTMENT OF HEALTH

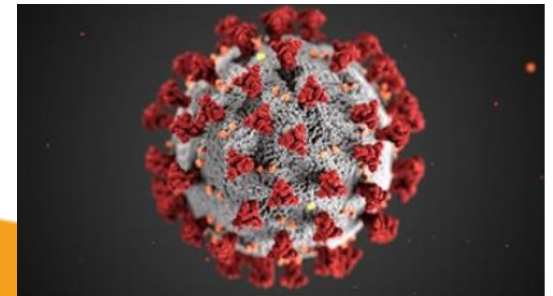
Updated Interim Infection Prevention and Control Recommendations for Healthcare Personnel– This guidance has been updated to include the following:

- Different options for screening individuals (healthcare personnel, patients, visitors) prior to their entry into a healthcare facility.
- Information on factors that could impact thermometer readings.
- Resources for evaluating and managing ventilation systems in healthcare facilities.
- Link to Frequently Asked Questions about use of Personal Protective Equipment.
- Explicit recommendation that facilities to develop policies and procedures to ensure recommendations are appropriately applied in their setting, including in emergency department and home healthcare delivery settings.

To learn more, please visit: [Infection Control Guidance](#).



Report ALL COVID-19 Antigen Lab Tests to the SD DOH
Even if it was a Positive Antigen and Confirmed with PCR.



Laboratory Guidance

Statewide Priority Populations for SARS-CoV-2 Testing

It is a statewide priority that ALL individuals with symptoms of COVID-19 be tested for SARS-CoV-2 with the recommendation from a health care provider

- Hospitalized individuals
- Healthcare workers, first responders, and active military
- Critical infrastructure workers in food manufacturing and agriculture
- Individuals in communal living settings like long-term care facilities
- Underinsured or uninsured individuals
- Low-income individuals or individuals unable to pay for testing
- Homeless individuals

SDPHL COVID-19 Testing Priorities

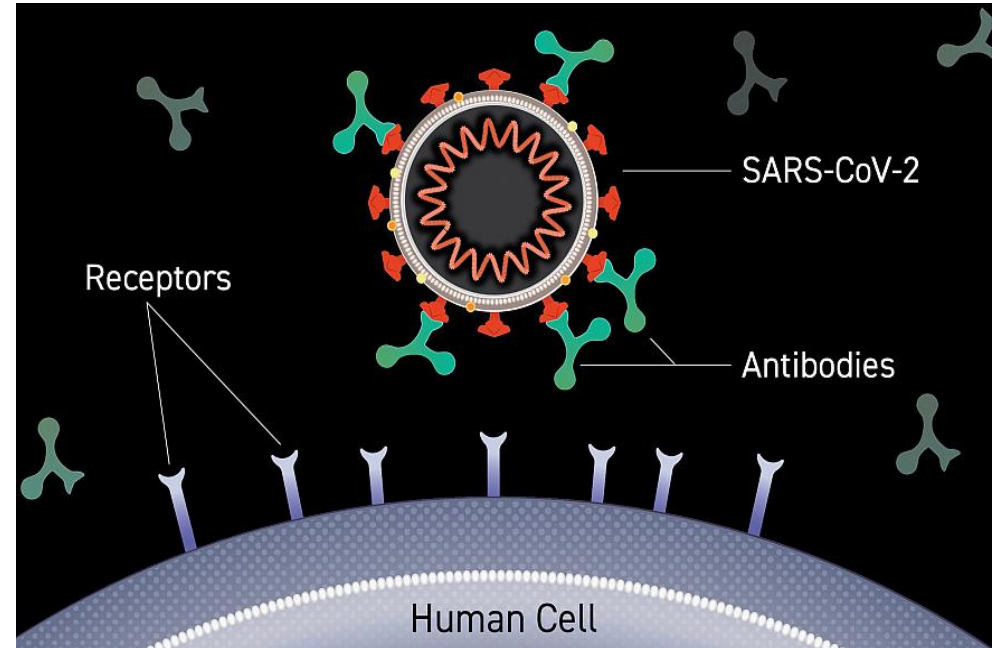
- Symptomatic hospitalized patients
- Symptomatic healthcare workers, first responders, and active military
- Symptomatic individuals in congregate living settings like LTC facilities
- Symptomatic individuals with no way to pay for testing
- Asymptomatic participants in state-sponsored sentinel surveillance:
 - Long-term care (staff and residents)
 - K-12 schools (adults)
 - Corrections (inmates and staff)
 - Tribes (tribal members)

FDA EUA Updates

- FDA has issued Emergency Use Authorization for the following:
 - 189: Molecular Diagnostic Tests for SARS-CoV-2
 - 58 (2): Serological Tests
 - 34: Molecular-Based Laboratory Developed Tests for SARS-CoV-2
 - 7: Antigen Diagnostic Tests for SARS-CoV-2
- Notable EUA Updates:
 - Monoclonal Antibody Therapy: Eli Lilly, Bamlanivimab

Monoclonal Antibodies

- Antibodies are proteins created by specialized immune cells and aid in the immune response
- Antibodies, including monoclonal antibodies (mAbs), directly neutralize the COVID-19 virus and are intended to **prevent progression of disease**



Monoclonal Antibody Therapy for COVID-19

- FDA granted **Emergency Use Authorization** for the Eli Lilly mAb therapy bamlanivimab on November 9, 2020
- Early evidence from a clinical trial showed bamlanivimab **may potentially** reduce hospitalization for individuals with COVID-19
- Bamlanivimab can be delivered by a single IV infusion and was shown to be most effective when **given early in infection**



Bamlanivimab Allocation: Phase 1

- During phase 1 of allocation, bamlanivimab will be provided to South Dakota hospitals and hospital-affiliated locations based on the following criteria:
 - Confirmed hospitalizations (7-day incidence)
 - Confirmed cases (7-day incidence)
- Hospitals must be registered with AmerisourceBergen to be eligible to receive bamlanivimab
- South Dakota's first allocation of COVID-19 mAb therapy (820 courses of treatment) was offered to hospitals currently registered with AmerisourceBergen and who received remdesivir

Bamlanivimab Allocation: Phase 2

- During phase 2 of allocation, bamlanivimab can be offered to other outpatient facilities.
- In addition to state and territories, bamlanivimab is being offered to:
 - Department of Defense
 - Veteran's Health Administration
 - Indian Health Services
 - Bureau of Prisons
 - Department of State
- SDDOH will provide frequent updates regarding allocation and movement between phases

Bamlanivimab Administration

- Bamlanivimab must be administered in an appropriate health care setting with appropriate staffing
- Eligible locations must have appropriately trained staff and equipment to provide IV infusion
- Post-infusion patient monitoring is required following mAb therapy administration
- Operation Warp Speed mAb therapy playbook provides additional information for health care facilities that are considering administration of out-patient mAb therapy.

Readiness Checklist: Administration of Outpatient mAbs under EUA



Allocate **dedicated space** and develop plan to **manage patient flow**

- Clear process for patients that are coming to clinical site including scheduling requirements
- Admission process for COVID-19 positive patients designed to minimize risk of spread per facility requirements / directions / guidelines'
- Dedicated room available for treatment



Ensure **dedicated source of supplies**; which may be difficult to procure

- Needed infusion components obtained
 - Example: IV kits, infusion chair, IV pole, vital sign monitoring equipment, emergency medications



Assign **sufficient personnel** to meet expected demand

- Sufficient staffing plans in place for Nurse/IV tech, Physician, Pharmacist
 - Likely need dedicated team to treat patients



Prepare for **drug administration** process

- Pre-visit: Clear treatment and monitoring plan developed for during infusion
- Treatment: 1-hour treatment and up 1-hour post-treatment observation
 - Emergency protocol defined for addressing potential infusion reactions or complications
- Post-treatment: Clear process for patient follow-up defined using telemedicine as possible



Ensure **process for reimbursement** in place (non-drug administrative costs)



Prepare for **reporting needs** for adverse events and record keeping

Bamlanivimab Resources

- [Operation Warp Speed Pre-EUA Playbook – Monoclonal Antibodies](#)
- [FDA Letter of Authorization](#)
- [Fact Sheet for Healthcare Providers](#)
- [Fact Sheet for Patients and Caregivers](#)
- [FDA Frequently Asked Questions](#)



Community Testing Opportunities

The screenshot displays the South Dakota Department of Health website. At the top, the header includes the department's logo, name, and the Secretary's name, Kim Malsam-Rysdon. Social media icons for Facebook, Twitter, and YouTube are present, along with a search bar and buttons for 'SUBSCRIBE TO LISTSERV' and 'CONTACT US'. A navigation menu lists various sections: A-Z TOPICS, NEWS, LOCAL OFFICES, LICENSING BOARDS, EVENT CALENDAR, RESOURCES & PUBLICATIONS, and FAQs. The 'NEWS' section is active, showing a breadcrumb trail 'HOME > NEWS'. The main content area features the South Dakota Department of Health logo and the URL 'covid.sd.gov'. The primary heading is 'NOVEL CORONAVIRUS (COVID-19) UPDATES AND INFORMATION'. Below this, a list of links provides further details: Updates | COVID-19 in SD, Precautions to Avoid Illness | If You Develop Symptoms, Multiple Language Resources | Vaccine Information, Community Guidance | Plasma Donation, Multisystem Inflammatory Syndrome (MIS-C), For Medical Providers | SD Healthcare Provider Guidance, Remdesivir Distribution | SD Registries & Data Collection, and CDC Healthcare Provider Guidance | CDC Website. At the bottom of the main content area, three prominent blue buttons offer 'Drive-Thru Mass TESTING EVENTS', 'COVIDAge Risk CALCULATOR', and 'Quarantine & Isolation CALCULATOR'.

WEBSITE OF THE STATE OF SOUTH DAKOTA DEPARTMENT OF HEALTH
Kim Malsam-Rysdon, Secretary of Health

SOUTH DAKOTA DEPARTMENT OF HEALTH

SUBSCRIBE TO LISTSERV CONTACT US Google

A-Z TOPICS NEWS LOCAL OFFICES LICENSING BOARDS EVENT CALENDAR RESOURCES & PUBLICATIONS FAQs

HOME > NEWS

NEWS

Collapse All | Expand All

Recent Releases

SOUTH DAKOTA DEPARTMENT OF HEALTH covid.sd.gov

NOVEL CORONAVIRUS (COVID-19) UPDATES AND INFORMATION

Updates | COVID-19 in SD
Precautions to Avoid Illness | If You Develop Symptoms
Multiple Language Resources | Vaccine Information
Community Guidance | Plasma Donation
Multisystem Inflammatory Syndrome (MIS-C)
For Medical Providers | SD Healthcare Provider Guidance
Remdesivir Distribution | SD Registries & Data Collection
CDC Healthcare Provider Guidance | CDC Website

Drive-Thru Mass TESTING EVENTS COVIDAge Risk CALCULATOR Quarantine & Isolation CALCULATOR

Community Testing Opportunities

Testing Communities

All times are local.

PIERRE - National Guard Armory, 3440 E. Hwy. 34

November 10 | 7 a.m. – 5 p.m.

November 11 | 8 a.m. – 5 p.m.

MOBRIDGE - National Guard Armory, 1213 Lake Front Dr.

November 11 | 8 a.m. – 5 p.m.

ABERDEEN - Fairgrounds, 400 24th Ave. NW

November 12 & 13 | 8 a.m. – 5 p.m.

November 14 | 8 a.m. – 12 p.m.

CHAMBERLAIN / OACOMA - Oacoma Community Center, 100 E. 3rd St.

November 14 | 8 a.m. – 5 p.m.

WATERTOWN - National Guard Armory, 1951 N. Hwy. 20

November 15 & 16 | 8 a.m. – 5 p.m.

MADISON - Baughman Park, 1100 3rd St. SE

November 17 | 12 p.m. – 6 p.m.

November 18 | 8 a.m. – 5 p.m.

YANKTON - Mall Parking Lot, 2101 Broadway Ave.

November 17 | 12 p.m. – 6 p.m.

November 18 | 8 a.m. – 5 p.m.

MARTIN - Post 240 American Legion, 210 East Bennett Ave.

November 20 | 9 a.m. – 6 p.m.

CUSTER - Custer Search & Rescue, 1073 Montgomery St.

November 20 | 8 a.m. – 5 p.m.

SPEARFISH - Spearfish High School, 1725 N. Main St.

November 21 & 22 | 8 a.m. – 5 p.m.

Community Testing Opportunities

COVID-19 Drive-Thru Mass Testing Events

Register for a Testing Time 

Pre-registration is required to secure a testing time. Testing is FREE.


[Registration Instructions](#) | [Covid-19 Drive up Testing video](#)



SOUTH DAKOTA DEPARTMENT OF HEALTH

Community Testing Opportunities

Do I Need a COVID-19 Test?

 Select Language ▼

Look for **emergency warning signs*** for COVID-19. If someone is showing any of these signs, **seek emergency medical care immediately:**

- Trouble breathing
- Persistent pain or pressure in the chest
- New confusion
- Inability to wake or stay awake
- Bluish lips or face

*This list is not all possible symptoms. Please call your medical provider for any other symptoms that are severe or concerning to you.

Call 911 or call ahead to your local emergency facility: Notify the operator that you are seeking care for someone who has or may have COVID-19.

[Click here to register for a COVID-19 test.](#)

Register

Community Testing Opportunities



Returning Users

Username

[Forgot username?](#)

Password

[Forgot password?](#)

Log on

New Users Sign-up Here

Every individual that is registering for a test must create a separate account.

You do not have to have symptoms to register for a test.

Register



SOUTH DAKOTA DEPARTMENT OF HEALTH