



SOUTH DAKOTA
DEPARTMENT OF HEALTH

This call is not intended for the press or for reporting purposes.

No Lab Content today

Lab-IP Calls will continue until Thursday April 1st.

After the Thursday April 1st Lab/IP call, Lab/IP content will be provided during the Thursday 11AM Central Healthcare Partners Call.

DOHInfectionControl@state.sd.us

Kipp.stahl@state.sd.us

Leah.Bomesberger@state.sd.us

Tim.Southern@state.sd.us



Visitation - *based on the Center for Medicare and Medicaid Services (CMS) revised guidance **March 10, 2021** ([QSO-20-39-NH](#))*

- The Centers for Medicare and Medicaid Services (CMS) recently updated guidance, in partnership with the Centers for Disease Control and Prevention, for safe visitation in nursing homes during the COVID-19 public health emergency.
- The changes reflect the impact of vaccinations on COVID-19 infections in Long-Term Care (LTC) facilities.
- Applies to all South Dakota Nursing Homes and Assisted Living Centers.
- Please read this guidance. Updates are in **red**.
- Lack of visitation in a LTC facility without adequate reasoning may indicate a Resident Rights concern.
- The new CMS guidelines should be followed immediately.

This call is not intended for the press or for reporting purposes.



Contact us to assist you with allowing indoor visitation

- Diana Weiland, Nursing Home Advisor email Diana.Weiland@state.sd.us
- Jennifer Maeschen, Assisted Living Advisor email Jennifer.Maeschen@state.sd.us

[Fact Sheet](#)

[CMS Memo QSO-20-39-NH](#)

This call is not intended for the press or for reporting purposes.



Infection Prevention Recommendation in Response to COVID-19 Vaccination

★ <https://www.cdc.gov/coronavirus/2019-ncov/hcp/infection-control-after-vaccination.html> ★

*CDC will routinely update this page as guidance is released.

*The following slides cover highlights of the updates. Please take some time to visit the site and review the recommendations in detail.

1) Visitation (In addition/accordance with CMS guidelines)

*Before allowing indoor visitation, the risks associated with visitation should be explained to residents and their visitors so they can make an informed decision about participation.

*Visitors should still be screened and restricted from visiting if they have: current COVID infection; symptoms of COVID-19; or prolonged close contact (within 6 feet of an infected person for a cumulative total of 15 minutes or more over a 24-hour period) with someone with COVID-19 infection in the prior 14 days.

Source control measures remain priority

<https://www.cdc.gov/coronavirus/2019-ncov/hcp/infection-control-after-vaccination.html>

This call is not intended for the press or for reporting purposes.

3. SARS-CoV-2 Testing

•Recommendations for SARS-CoV-2 testing for HCP, residents and patients remain unchanged.

4. Use of Personal Protective Equipment

•Recommendations for use of personal protective equipment by HCP remain unchanged

<https://www.cdc.gov/coronavirus/2019-ncov/hcp/infection-control-after-vaccination.html>

This call is not intended for the press or for reporting purposes.

Updated Healthcare Infection Prevention and Control Recommendations in Response to COVID-19 Vaccination

Updated Mar. 10, 2021

Key Points

- CDC has updated select healthcare infection prevention and control recommendations in response to COVID-19 vaccination, which are summarized in this guidance.
- Updated recommendations will be added to this page regularly as new information becomes available.

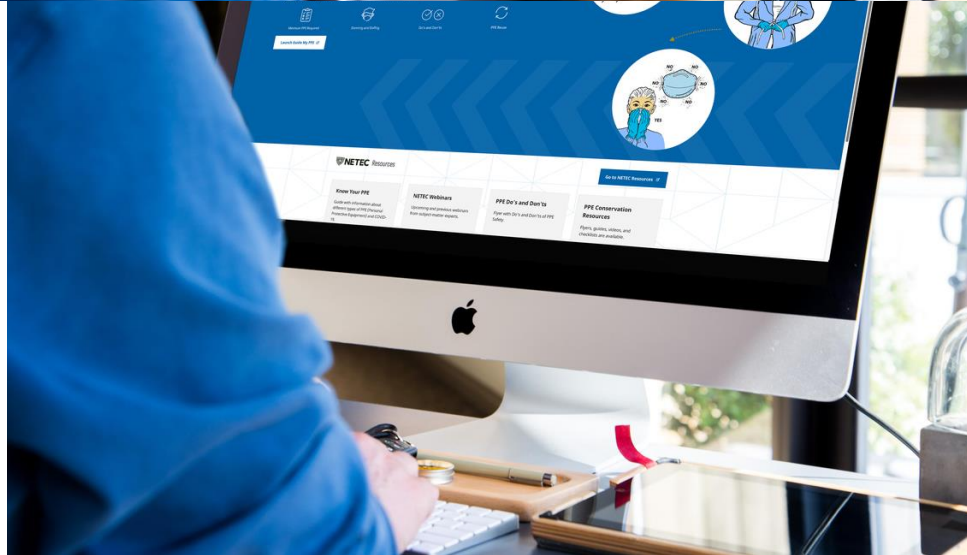
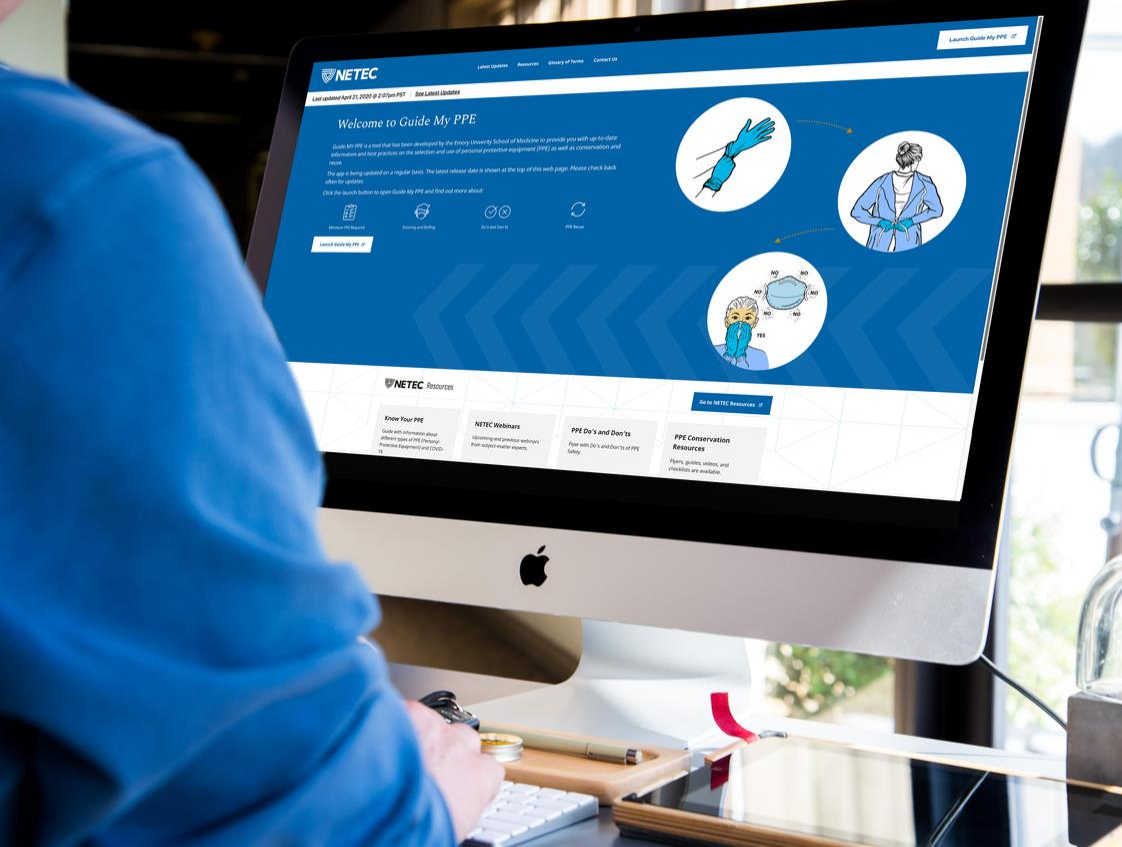
- **Indoor visitation could be permitted for all residents regardless of vaccination status of the resident, or visitor, unless certain scenarios arise that would limit visitation for.**
- **Visitors and residents should still wear a facemask for source control**
- **Fully vaccinated HCP with higher-risk exposures who are asymptomatic do not need to be restricted from work for 14 days following their exposure.**
- **Fully vaccinated inpatients and residents in healthcare settings should continue to quarantine following prolonged close contact (within 6 feet for a cumulative total of 15 minutes or more over a 24-hour period) with someone with SARS-CoV-2 infection**
- **Quarantine is no longer recommended for residents who are being admitted to a post-acute care facility if they are fully vaccinated and have not had prolonged close contact with someone with SARS-CoV-2 infection in the prior 14 days.**

Definitions:

Fully vaccinated refers to a person who is:

≥2 weeks following receipt of the second dose in a 2-dose series, or ≥2 weeks following receipt of one dose of a single-dose vaccine

Healthcare settings refers to places where healthcare is delivered and includes, but is not limited to, acute care facilities, long term acute care facilities, inpatient rehabilitation facilities, nursing homes and assisted living facilities, home healthcare, vehicles where healthcare is delivered (e.g., mobile clinics), and outpatient facilities, such as dialysis centers, physician offices, and others.



Web App Features



Outputs printable PDFs.



Illustrated steps for safe donning and doffing.



Offers options for REUSE and EXTENDED WEAR.



Works on any modern mobile or desktop device.

Created with love by experts



Created by some of the world's leading experts in the control of special pathogens like COVID.



Content has been iteratively tested by frontline providers.



Visuals were created by professional medical illustrators.

<https://ppeguide.org>

<https://ppeguide.org/>

Infection Control E-mail

DOHInfectionControl@state.sd.us



Lab-IP Calls will continue through the month of March.

After the Thursday April 1st Lab/IP call, Lab/IP content will be provided during the Thursday 11AM Central Healthcare Partners Call.

DOHInfectionControl@state.sd.us

Kipp.stahl@state.sd.us

Leah.Bomesberger@state.sd.us

Tim.Southern@state.sd.us

