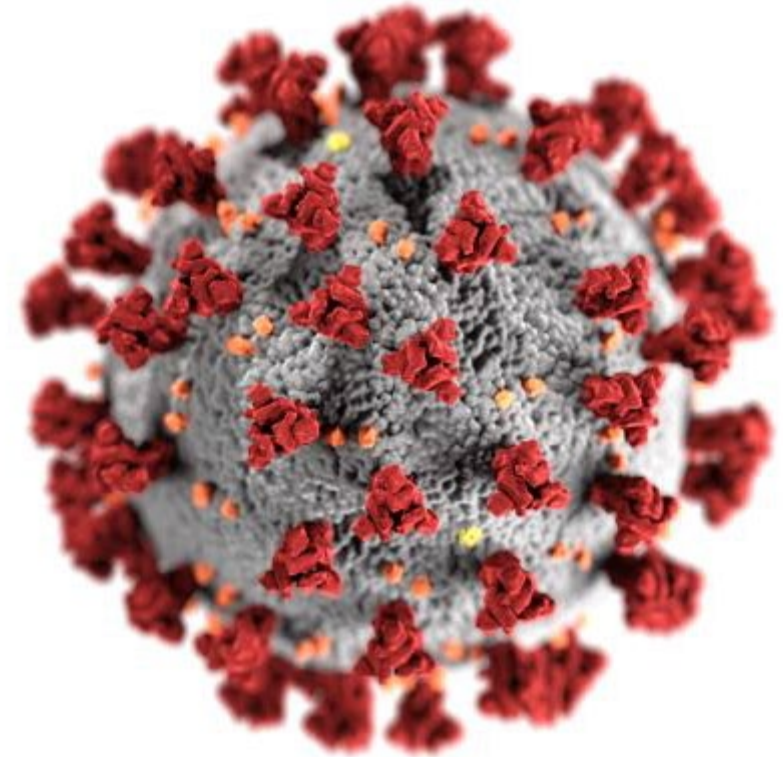


# 2019 Novel Coronavirus (COVID-19)

South Dakota Department of Health

March 4, 2021



**We will begin in just a few moments. Thanks!**

*Not intended for press or for reporting purposes.*



SOUTH DAKOTA DEPARTMENT OF HEALTH

This is an **emerging, rapidly evolving situation**. Information in this presentation is current as of March 3, 2021. Please check the South Dakota Department of Health website for the most current information and guidance.

**[COVID.sd.gov](https://COVID.sd.gov)**

*Not intended for press or for reporting purposes.*



SOUTH DAKOTA DEPARTMENT OF HEALTH

# Agenda

- Situation Update
- Laboratory Guidance
- Long Term Care
- Vaccination Update
- Infection Prevention
- Community Mitigation
- Supply Chain Management
- On-going Communications
- Q&A Session

*Not intended for press or for reporting purposes.*



SOUTH DAKOTA DEPARTMENT OF HEALTH

# Coronavirus Situation (as of March 3, 2021)

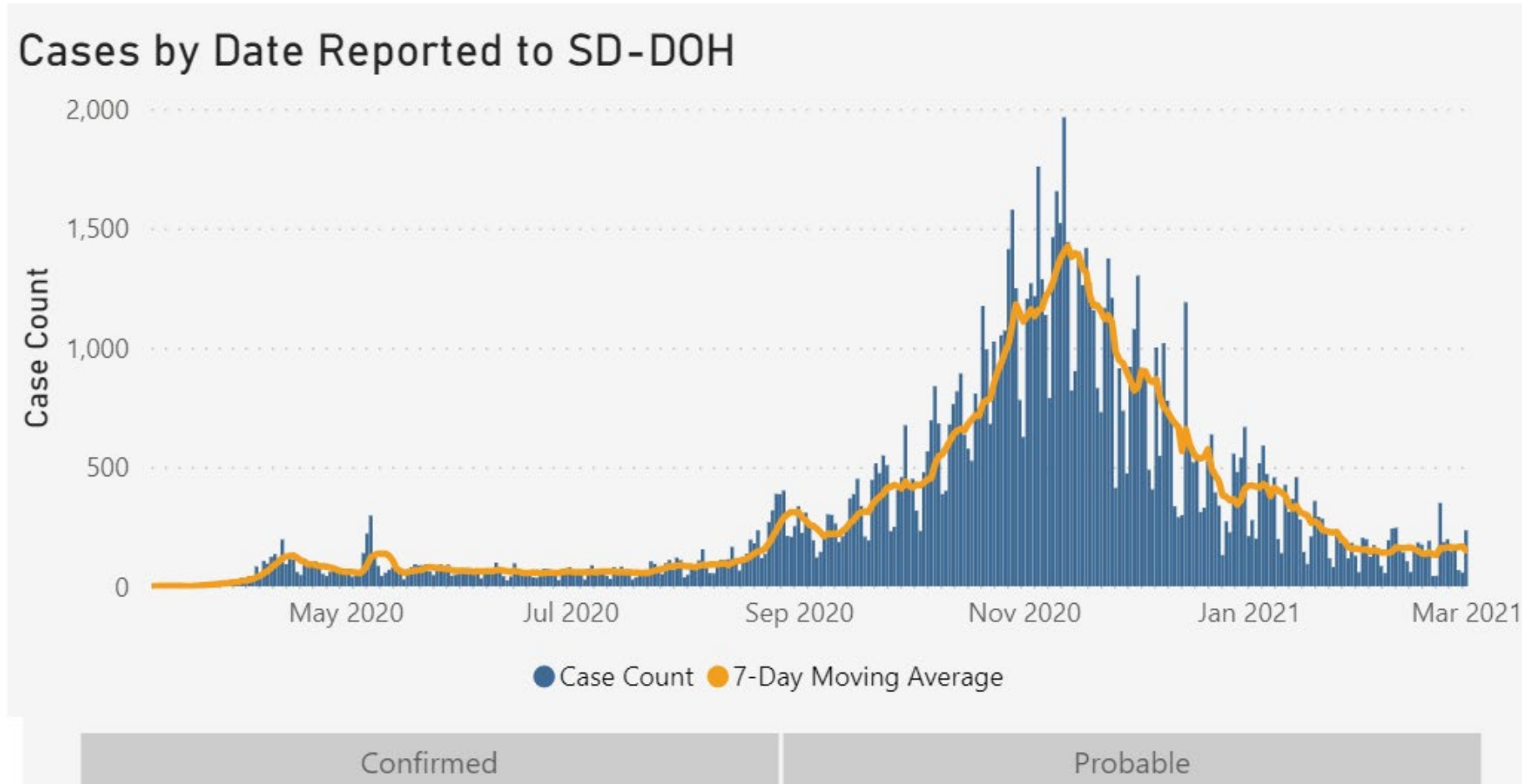
- [International](#)
  - 114,428,211 confirmed cases
  - 2,543,755 deaths
- [United States](#) (50 states + DC)
  - 28,456,860 confirmed cases
  - 513,122 deaths
- [South Dakota](#)
  - 112,833 confirmed and probable cases
  - 1,893 deaths
  - 108,947 recovered cases

*Not intended for press or for reporting purposes.*



SOUTH DAKOTA DEPARTMENT OF HEALTH

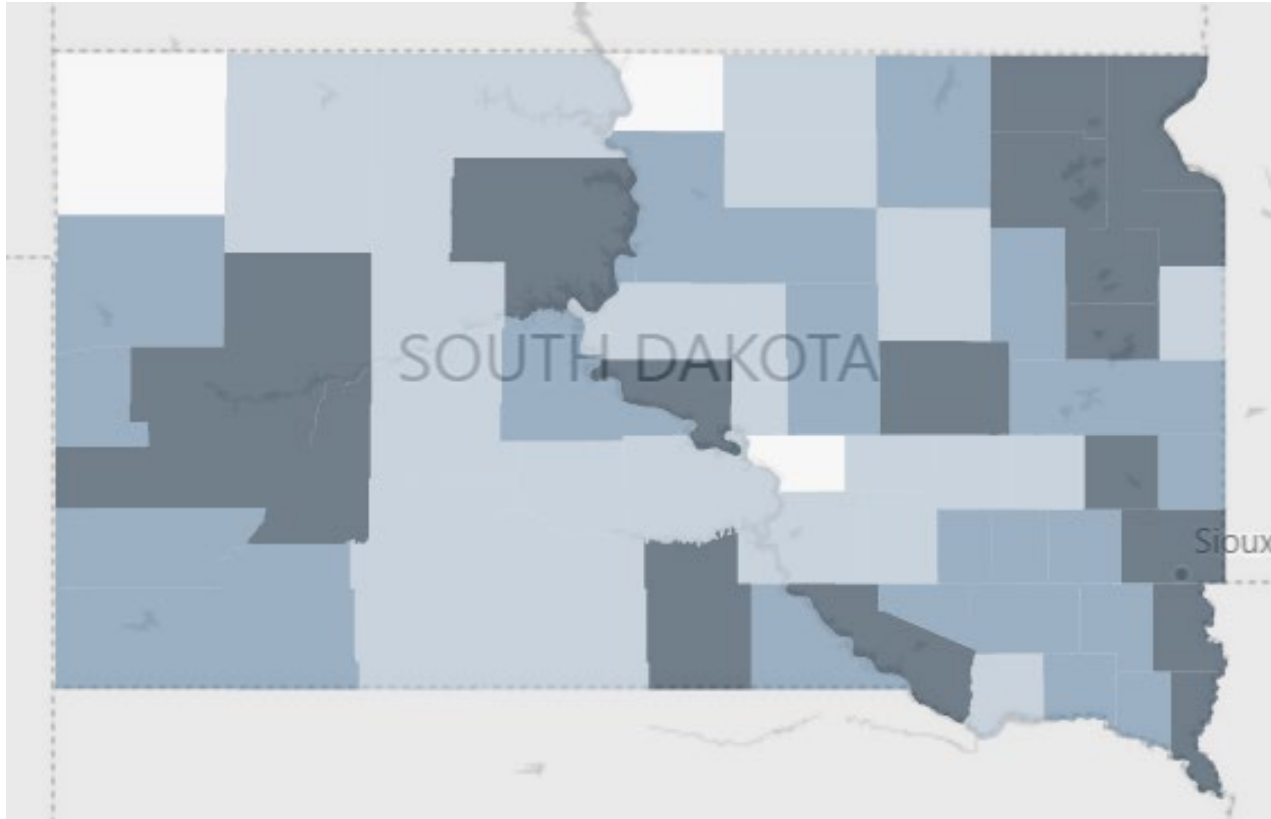
# Epidemiologic “Epi” Curve of COVID-19 Cases, by Date Reported to SD-DOH



As of March 3, 2021

*Not intended for press or for reporting purposes.*

# COVID-19 Case Map, by County



## Substantial Community Spread

Beadle	Marshall*
Charles Mix	Meade
Codington	Minnehaha
Day	Pennington
Dewey*	Roberts
Grant	Tripp
Hamlin	Union
Hughes	
Lake*	
Lincoln	

\* New County

As of March 3, 2021

*Not intended for press or for reporting purposes.*



SOUTH DAKOTA DEPARTMENT OF HEALTH

# General Testing Recommendations

Medical providers are recommended to test individuals with signs and symptoms compatible with COVID-19 infection, including:

- Fever or chills
- Cough
- Shortness of breath or difficulty breathing
- Fatigue
- Muscle or body aches
- Headache
- New loss of taste or smell
- Sore throat
- Congestion or runny nose
- Nausea or vomiting
- Diarrhea

<https://www.cdc.gov/coronavirus/2019-ncov/symptoms-testing/symptoms.html>

As of June 18, 2020

*Not intended for press or for reporting purposes.*



SOUTH DAKOTA DEPARTMENT OF HEALTH

# Reporting COVID-19 Tests to SD-DOH

- **Reminder:** Coronavirus respiratory syndromes are a Category I disease
- Report ***immediately*** on suspicion of disease
- Reporting mechanisms:
  - Electronic Laboratory Report (ELR) – HL7 message to SD Health Link (health information exchange)
  - Flat file (CSV) – Secure email
  - Disease reporting website – [sd.gov/diseasereport](https://sd.gov/diseasereport)
  - Fax – 605.773.5509

*Not intended for press or for reporting purposes.*



SOUTH DAKOTA DEPARTMENT OF HEALTH

# Janssen COVID-19 Vaccine (Johnson & Johnson)

- FDA EUA: February 27, 2021
- Adenovector vaccine (adenovirus used to deliver SARS-CoV-2 spike protein instructions to cells)
- Single dose vaccine
- Approved for those aged 18 and older
- Recommended to take the first vaccine available to you

[https://www.cdc.gov/mmwr/volumes/70/wr/mm7009e4.htm?s\\_cid=mm7009e4\\_x](https://www.cdc.gov/mmwr/volumes/70/wr/mm7009e4.htm?s_cid=mm7009e4_x)

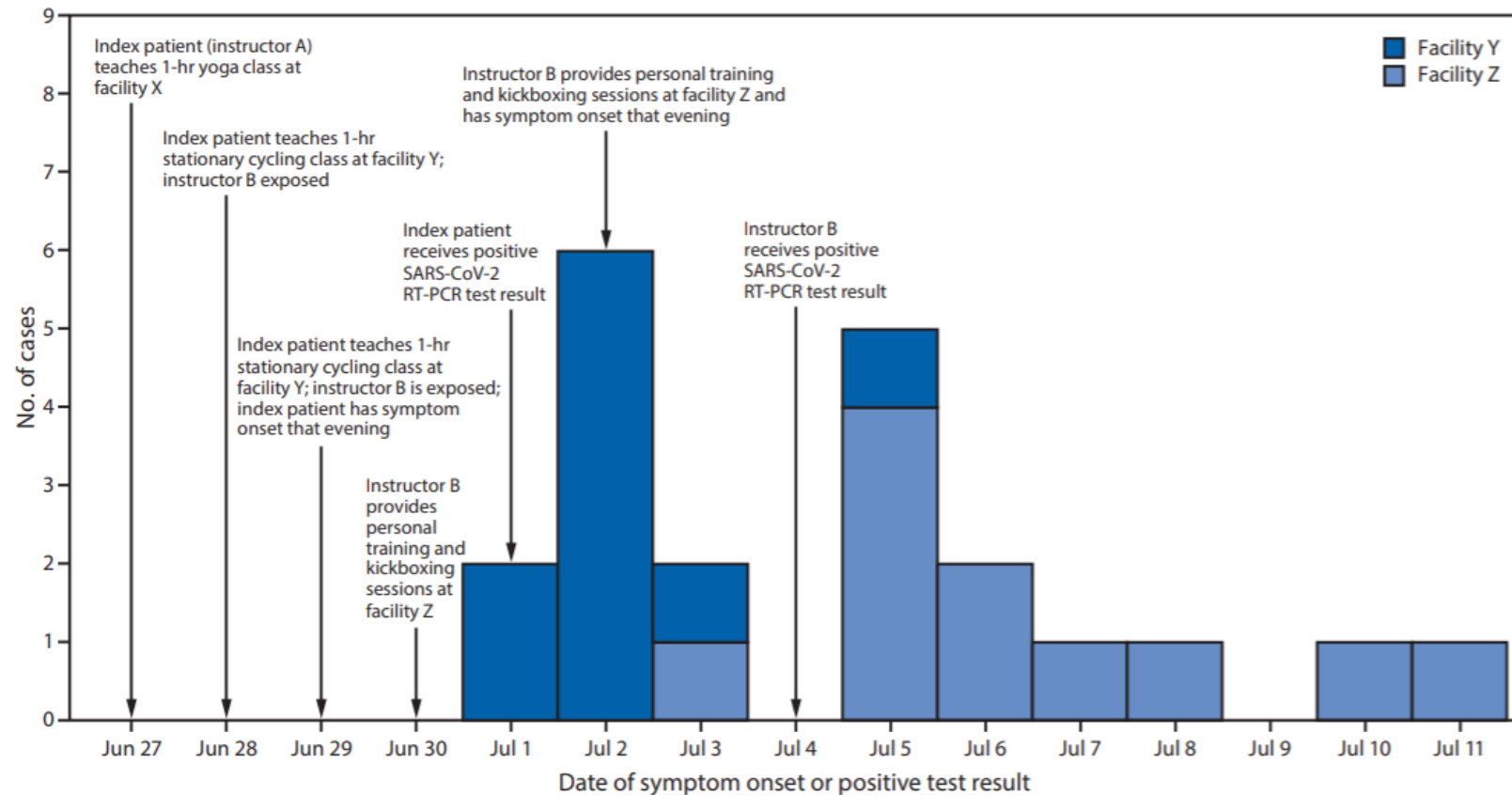
*Not intended for press or for reporting purposes.*



SOUTH DAKOTA DEPARTMENT OF HEALTH

# Community Transmission of SARS-CoV-2 at Three Fitness Facilities — Hawaii, June–July 2020

FIGURE. Date of symptom onset or positive test result\* among 21 COVID-19 cases epidemiologically linked to a fitness center instructor — Hawaii, June 29–July 11, 2020



[https://www.cdc.gov/mmwr/volumes/70/wr/mm7009e1.htm?s\\_cid=mm7009e1\\_x](https://www.cdc.gov/mmwr/volumes/70/wr/mm7009e1.htm?s_cid=mm7009e1_x)

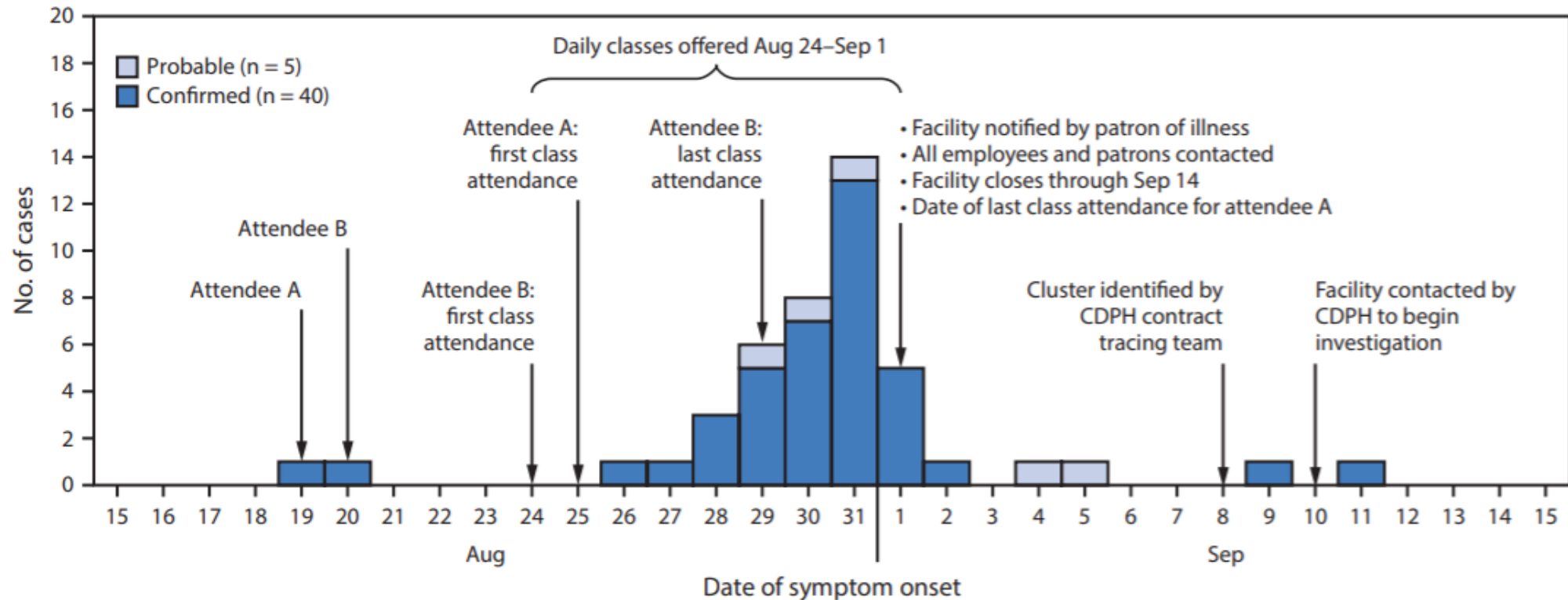
*Not intended for press or for reporting purposes.*



SOUTH DAKOTA DEPARTMENT OF HEALTH

# COVID-19 Outbreak Among Attendees of an Exercise Facility — Chicago, Illinois, August–September 2020

FIGURE. Confirmed and probable COVID-19 cases (n = 45) among attendees of an exercise facility,\* by date of reported symptom onset† — Chicago, Illinois, August 19–September 11, 2020



[https://www.cdc.gov/mmwr/volumes/70/wr/mm7009e2.htm?s\\_cid=mm7009e2\\_x](https://www.cdc.gov/mmwr/volumes/70/wr/mm7009e2.htm?s_cid=mm7009e2_x)

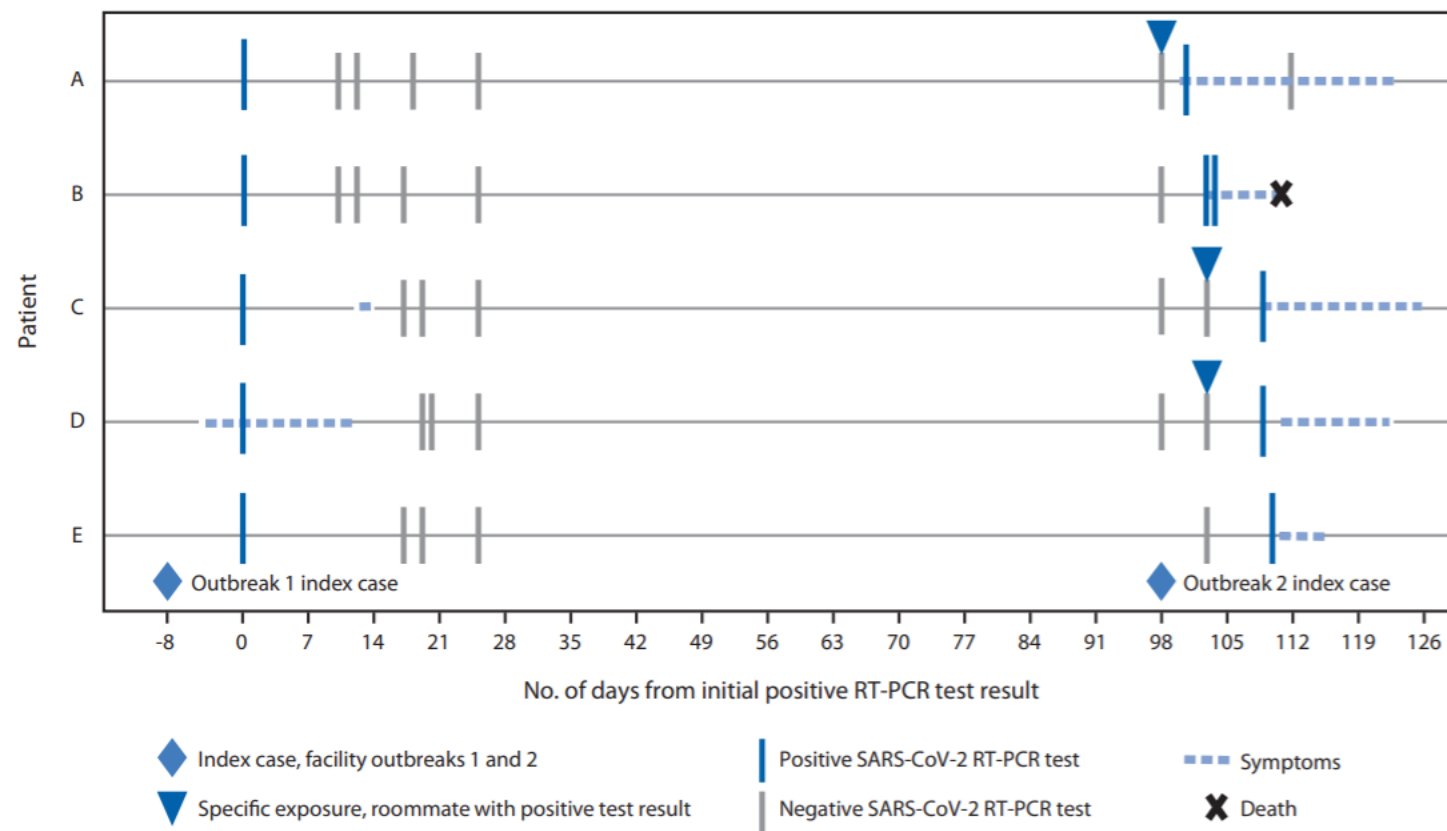
*Not intended for press or for reporting purposes.*



SOUTH DAKOTA DEPARTMENT OF HEALTH

# Suspected Recurrent SARS-CoV-2 Infections Among Residents of a Skilled Nursing Facility During a Second COVID-19 Outbreak — Kentucky, July–November 2020

FIGURE. Exposure, symptom onset, and testing timeline for five patients with recurrent COVID-19 cases in a skilled nursing facility — Kentucky, July–December 2020\*



[https://www.cdc.gov/mmwr/volumes/70/wr/mm7008a3.htm?s\\_cid=mm7008a3\\_x](https://www.cdc.gov/mmwr/volumes/70/wr/mm7008a3.htm?s_cid=mm7008a3_x)

*Not intended for press or for reporting purposes.*



SOUTH DAKOTA DEPARTMENT OF HEALTH

# Selected CDC Updates

Available at: <https://www.cdc.gov/coronavirus/2019-ncov/whats-new-all.html>

For Parents: Multisystem Inflammatory Syndrome in Children (MIS-C) associated with COVID-19: <https://www.cdc.gov/coronavirus/2019-ncov/daily-life-coping/children/mis-c.html>

Selected Adverse Events Reported after COVID-19 Vaccination:  
<https://www.cdc.gov/coronavirus/2019-ncov/vaccines/safety/adverse-events.html>

Janssen COVID-19 Vaccine (Johnson & Johnson) Questions:  
<https://www.cdc.gov/vaccines/covid-19/info-by-product/janssen/janssen-faqs.html>

*Not intended for press or for reporting purposes.*



SOUTH DAKOTA DEPARTMENT OF HEALTH

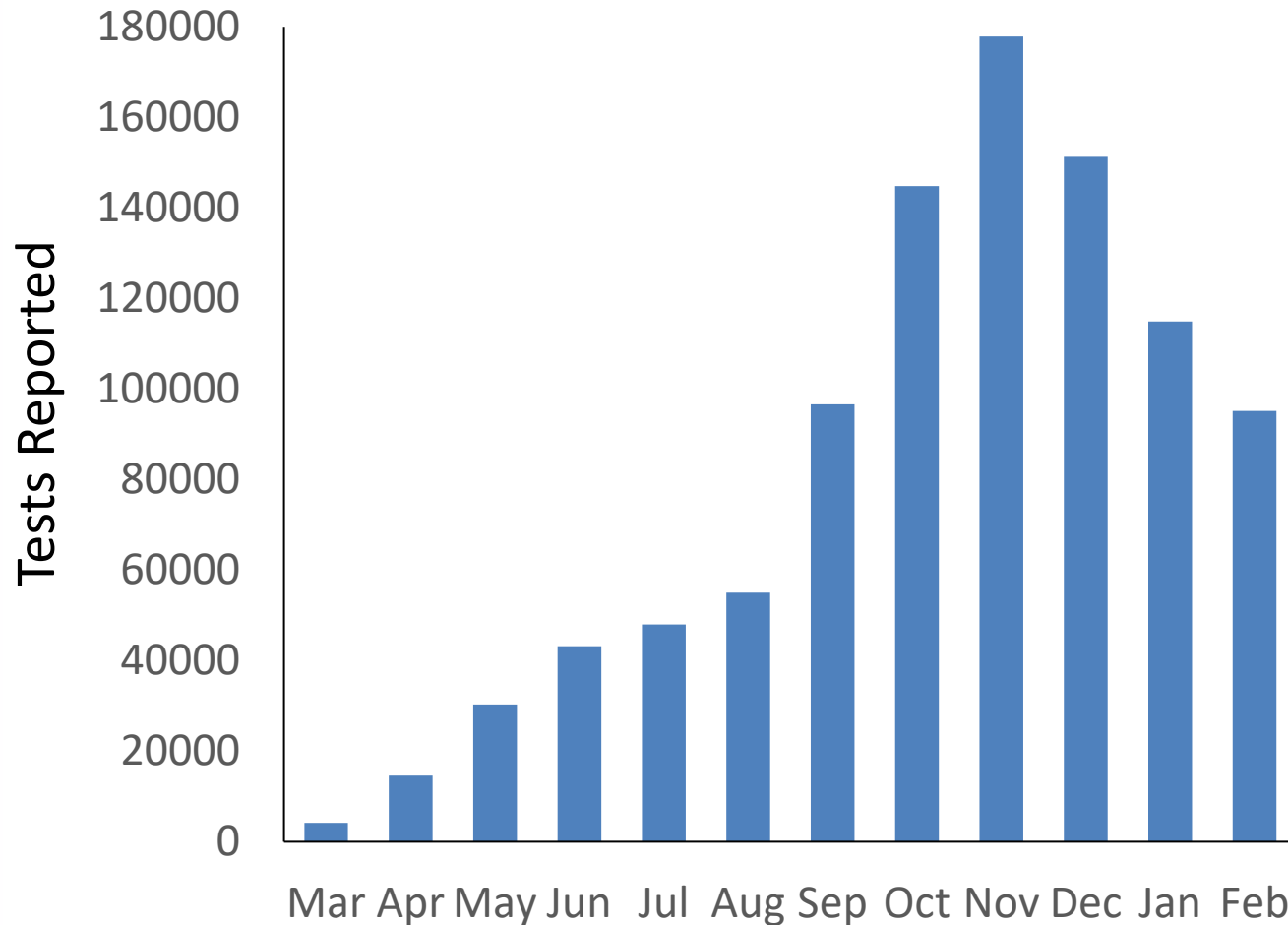
# Laboratory Guidance

*Not intended for press or for reporting purposes.*



SOUTH DAKOTA DEPARTMENT OF HEALTH

# SARS-CoV-2 Tests Reported to SDDOH by Month



- There remains a need to maintain a high level of testing statewide.
- Symptomatic individuals
  - Connect COVID-19 patients with care
  - Track spread of disease
  - Disrupt transmission
  - Variant surveillance
- Asymptomatic individuals
  - Detect “asymptomatic” COVID-19 cases
  - End-of-quarantine testing
  - Variant surveillance

*Not intended for press or for reporting purposes.*



SOUTH DAKOTA DEPARTMENT OF HEALTH

# mAb Therapy: Direct Ordering Information

## Direct Ordering:

- [Direct Ordering Process Guide](#)
- [AmerisourceBergen COVID-19 Director Order Request](#)

## General Information:

- [COVID-19 Monoclonal Antibody Therapeutics Key Resources for Providers \(Fact Sheet\)](#)
- [Regeneron EUA Guidebook](#)
- [Lilly Bamlanivimab Antibody Playbook](#)
- [ASPR Portfolio of COVID-19 Medical Countermeasures](#)

## Support:

- HHS: [COVID19Therapeutics@hhs.gov](mailto:COVID19Therapeutics@hhs.gov)
- Amerisource Bergen: [C19therapies@amerisourcebergen.com](mailto:C19therapies@amerisourcebergen.com)
- SD-DOH: [Bob.Coolidge@state.sd.us](mailto:Bob.Coolidge@state.sd.us)

*Not intended for press or for reporting purposes.*



SOUTH DAKOTA DEPARTMENT OF HEALTH

# Abbott BinaxNOW COVID Ag Card Expiration Dates

- Abbott has extended the expiration date of many lots of BinaxNOW kits
- Abbott now endorses a shelf-life of up to 9 months for many existing kits and for all newly manufactured kits
- Abbott BinaxNOW card lots, part number 195-000, which qualify for extension of expiration, can be found in the recent letter provided by Abbott. The letter provides:
  - Lot number
  - Current expiration date
  - New expiration date
- Abbott is updating the Navica app to accept COVID Ag cards with extended expiration dates

Attachment 1 - BinaxNOW™ COVID-19 Ag Card lots with extended expiry

Lot Number	Original Expiry	New Expiry
124008	07-Feb-21	07-May-21
124073	08-Feb-21	08-May-21
124199	10-Feb-21	10-May-21
124380	11-Feb-21	11-May-21

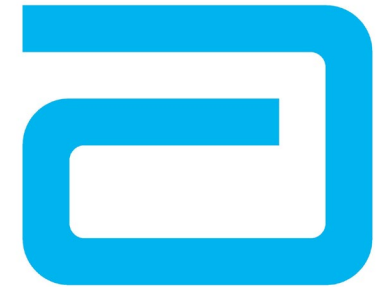


SOUTH DAKOTA DEPARTMENT OF HEALTH

*Not intended for press or for reporting purposes.*

# SARS-CoV-2 Antigen Testing: Abbott BinaxNOW

- SDDOH continues to stock Abbott BinaxNOW COVID-19 Antigen test cards.
- For questions about BinaxNOW availability, please contact the following:
  - K-12 Schools: [Joe.Moran@state.sd.us](mailto:Joe.Moran@state.sd.us)
  - Childcare Providers: [Laura.Nordbye@state.sd.us](mailto:Laura.Nordbye@state.sd.us)
  - Long-term Care: [Denise.Broadbent@state.sd.us](mailto:Denise.Broadbent@state.sd.us)
  - Healthcare: [Laurie.Gregg@state.sd.us](mailto:Laurie.Gregg@state.sd.us)
  - Higher Education: [Laurie.Gregg@state.sd.us](mailto:Laurie.Gregg@state.sd.us)
  - Businesses/Pharmacies: [Leanne.Nicholls@state.sd.us](mailto:Leanne.Nicholls@state.sd.us)
- SDDOH continues to accept requests for BinaxNOW antigen cards
  - [Joan.Adam@state.sd.us](mailto:Joan.Adam@state.sd.us)
  - [Tim.Southern@state.sd.us](mailto:Tim.Southern@state.sd.us)
- Inquiries for BinaxNOW resources can also be directed to:
  - [Dorothy.Ahten@abbott.com](mailto:Dorothy.Ahten@abbott.com)



**Abbott**



SOUTH DAKOTA DEPARTMENT OF HEALTH

*Not intended for press or for reporting purposes.*

# SARS-CoV-2 Variant Sequencing

- A variety of approaches can be used to identify SARS-CoV-2 variants
- Targeted gene sequencing can be used to detect specific mutations SARS-CoV-2 genes that correspond to variants of interest
- Whole genome sequencing can be used to sequence large portions of the SARS-CoV-2 genome which leads to more information including mutations found in a variety of genes



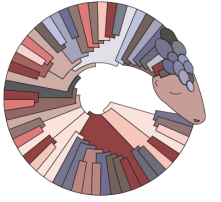
<https://www.cdc.gov/coronavirus/2019-ncov/cases-updates/variant-surveillance.html>

*Not intended for press or for reporting purposes.*



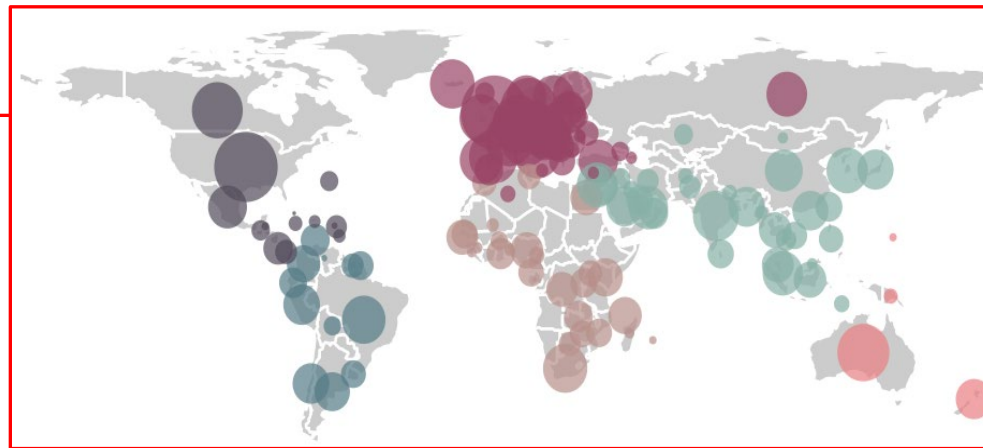
SOUTH DAKOTA DEPARTMENT OF HEALTH

# SARS-CoV-2 Sequence Analysis: Pangolin



- There are several tools that help scientists evaluate SARS-CoV-2 sequence data
- One tool is Pangolin: Phylogenetic Assignment of Named Global Outbreak Lineages
- Pangolin assigns a Pango lineage name to SARS-CoV-2 sequences
- Some major Pango SARS-CoV-2 lineages include:

- A
- B
- B.1
- B.1.177
- B.1.1.7



*Not intended for press or for reporting purposes.*

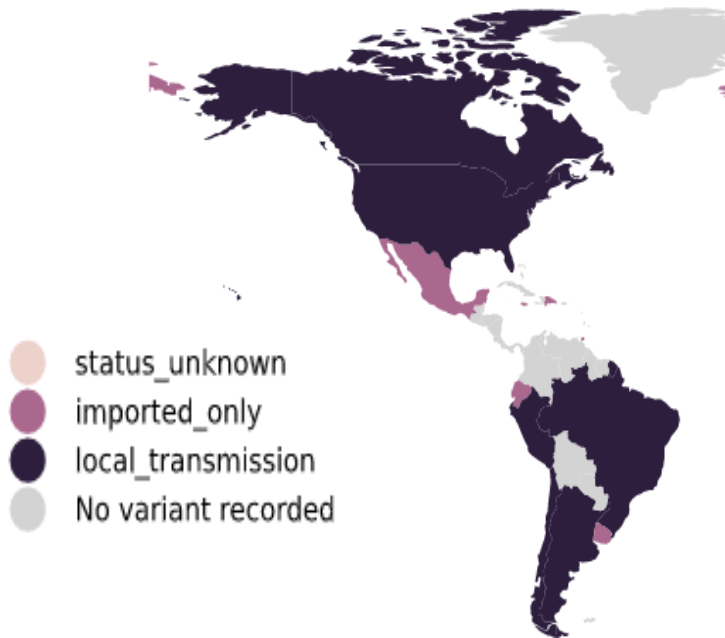


SOUTH DAKOTA DEPARTMENT OF HEALTH

# SARS-CoV-2 Variants: Lineages of Concern

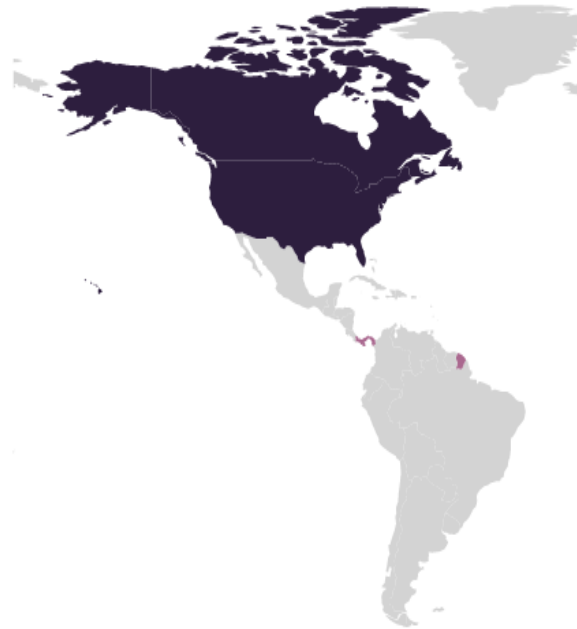
## B.1.1.7: UK Variant

- 94 countries
- 84 countries with sequences



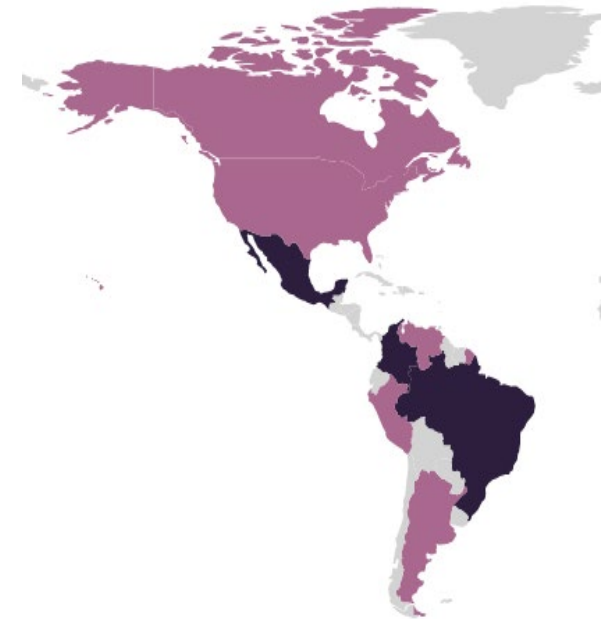
## B.1.135: South African Variant

- 48 countries
- 41 countries with sequences



## P.1: Brazil Variant

- 25 countries
- 19 countries with sequences



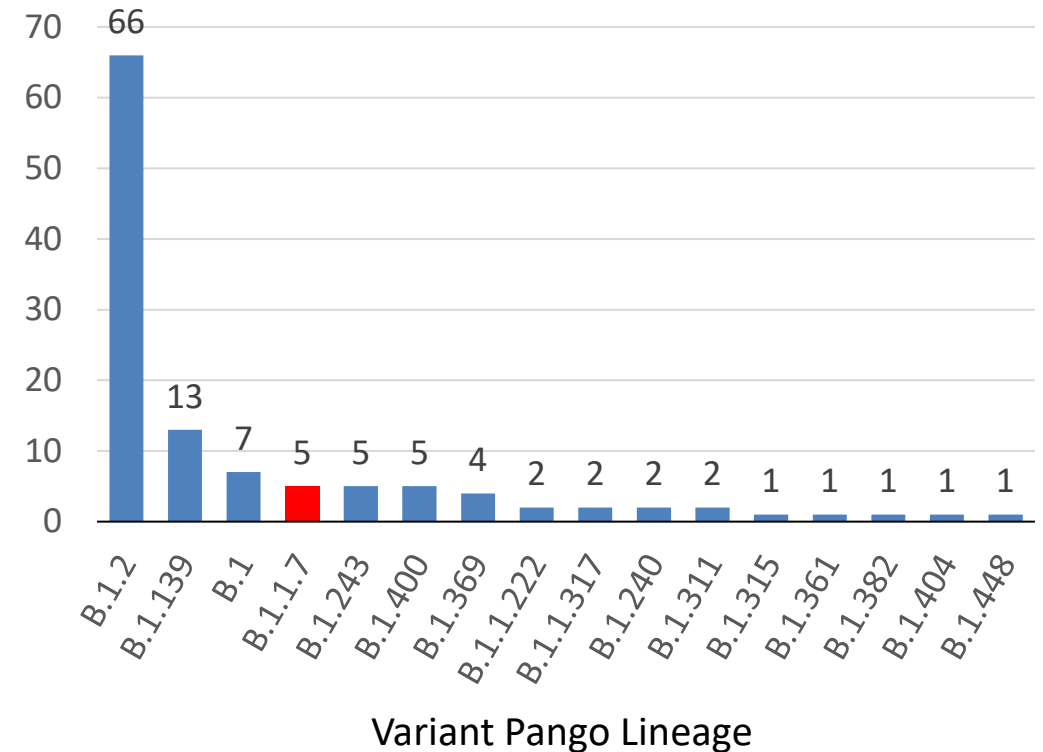
*Not intended for press or for reporting purposes.*



SOUTH DAKOTA DEPARTMENT OF HEALTH

# SDPHL SARS-CoV-2 Variant Sequence Data

Lineage	Count	Description	Most Common Countries
B.1.2	66	USA Lineage	USA; Canada; Denmark
B.1.139	13	USA Lineage	USA; Denmark
B.1	7	Large European Lineage	UK; USA; Canada
<b>B.1.1.7</b>	<b>5</b>	<b>UK Lineage of Concern</b>	<b>UK; Denmark; Belgium; USA</b>
B.1.243	5	USA Lineage	USA; Mexico
B.1.400	5	USA Lineage	USA
B.1.369	4	USA/New Zealand Lineage	USA; Canada; New Zealand; UK
B.1.1.222	2	USA/Mexico Lineage	USA; Mexico; Switzerland
B.1.1.317	2	Russian Lineage	Russia; UK; Canada; Denmark; USA
B.1.240	2	USA Lineage	USA; UK
B.1.311	2	USA Lineage	USA; Canada
B.1.315	1	USA Lineage	USA
B.1.361	1	USA Lineage	USA
B.1.382	1	USA Lineage	USA; Canada
B.1.404	1	USA/Mexico Lineage	USA; Mexico; Canada
B.1.448	1	USA Lineage	USA
Total	118		



- 2/5 B.1.1.7 variants: not residents of South Dakota
- 3/5 B.1.1.7 variants: residency currently under evaluation
- B.1.351: not identified by sequencing
- P.1: not identified by sequencing

*Not intended for press or for reporting purposes.*



SOUTH DAKOTA DEPARTMENT OF HEALTH

# Specimen Submission to SDPHL for Sequencing

- SDPHL is asking that all clinical laboratories submit SARS-CoV-2-positive specimens to SDPHL for sequencing.
  - Specimens should be from South Dakota residents
  - Specimens should be a nasal, MTS, or NP swab in viral transport medium
  - Specimens must have been collected and tested in the previous 7 days
  - Specimens can be shipped to the SDPHL weekly on Wednesday and Thursday
  - The SDPHL sequencing requisition form should be submitted with each specimen
  - SDPHL will provide packaging and shipping supplies as well as access to the statewide courier for specimen transport
  - Updated information regarding variant sequencing will be provided in an upcoming Lab Alert

*Not intended for press or for reporting purposes.*



SOUTH DAKOTA DEPARTMENT OF HEALTH

# SDPHL Variant Sequencing and Data Sharing

- Variant sequencing is not currently provided as a clinical or diagnostic service.
  - Variant sequencing is for epidemiological purposes only.
- Sequencing results will not be provided back to the submitter to influence patient care.
  - Variant sequencing is not recognized by CMS as a “CLIA-approved” test.
  - SDPHL will not accept requests for variant sequencing from healthcare providers who want to use that information to influence patient care.
- Sequencing results will be provided by SDPHL in aggregate form most likely on a biweekly or monthly basis during the Lab/IP and Healthcare partners webinars.
- SDPHL will accept any SARS-CoV-2-positive specimen for sequencing if the specimen is correctly collected and submitted in a timely manner.

*Not intended for press or for reporting purposes.*



SOUTH DAKOTA DEPARTMENT OF HEALTH

# Long Term Care

*Not intended for press or for reporting purposes.*



SOUTH DAKOTA DEPARTMENT OF HEALTH

# Disease Impact – United States *as of 02.14.21*

## Resident and Staff Cases and Deaths

TOTAL RESIDENT COVID-19 CONFIRMED CASES

635,369

TOTAL RESIDENT COVID-19 DEATHS

128,285

TOTAL STAFF COVID-19 CONFIRMED CASES

546,457

TOTAL STAFF COVID-19 DEATHS

1,591

<https://data.cms.gov/stories/s/COVID-19-Nursing-Home-Data/bkwz-xpvg/>

*Not intended for press or for reporting purposes.*



SOUTH DAKOTA DEPARTMENT OF HEALTH

# Long Term Care in South Dakota

*Disease Impact in Nursing Homes and Assisted Living Centers*

- **Current Number of LTC Facilities with Case – 14\* (12 facilities with a case in staff only)**
- **Cumulative Total LTC Facilities with Case – 216**
- **Current Active Cases in a Resident – 2\***
- **Cumulative Total Resident Cases – 3,565**
- **Cumulative Total Resident Deaths – 865**
- **Current Active Cases in Staff – 11\***
- **Cumulative Total Case in Staff – 1,223**

*\*self-reported by touch-base calls as of 03.05.2021 - all data is provisional*

*Not intended for press or for reporting purposes.*



SOUTH DAKOTA DEPARTMENT OF HEALTH

# Visitation - *guidance based on the Center for Medicare and Medicaid Services (CMS) revised guidance September 17, 2020 ([QSO-20-39-NH](#))*

- Facilities **must** have a plan with policies and procedures in place to ensure person-centered visitation is reasonably allowed.
- Visitation may occur safely and based on the community (county) test positivity rate, the absence of COVID-19 within the facility, and the core principles of COVID-19 infection prevention.
- Lack of visitation in a facility without adequate reasoning may indicate a Resident Rights concern.
- **State of South Dakota Back to Normal Long-Term Care Reopening Plan - Revised September 25, 2020**
- The guidance represents reasonable ways a NH and ALC can facilitate in-person visitation.

*Not intended for press or for reporting purposes.*

Aurora County, SD	46003	SD	8	2,751	Non-core	23	836	4.3%	Green
Beadle County, SD	46005	SD	8	18,453	Micropolitan	48	260	12.5%	Yellow
Bennett County, SD	46007	SD	8	3,365	Non-core	54	1,605	0.0%	Green
Bon Homme County, SD	46009	SD	8	6,901	Non-core	53	768	3.8%	Green
Brookings County, SD	46011	SD	8	35,077	Micropolitan	395	1,126	2.3%	Green
Brown County, SD	46013	SD	8	38,839	Micropolitan	406	1,045	6.2%	Yellow
Brule County, SD	46015	SD	8	5,297	Non-core	33	623	0.0%	Green
Buffalo County, SD	46017	SD	8	1,962	Non-core	<20 tests	<20 tests	<20 tests	Green
Butte County, SD	46019	SD	8	10,429	Non-core	159	1,525	5.7%	Yellow
Campbell County, SD	46021	SD	8	1,376	Non-core	29	2,108	0.0%	Green
Charles Mix County, SD	46023	SD	8	9,292	Non-core	107	1,152	11.2%	Yellow
Clark County, SD	46025	SD	8	3,736	Non-core	31	830	0.0%	Green
Clay County, SD	46027	SD	8	14,070	Micropolitan	50	355	2.0%	Green
Codington County, SD	46029	SD	8	28,009	Micropolitan	86	307	2.3%	Green
Corson County, SD	46031	SD	8	4,086	Non-core	27	661	14.8%	Yellow
Custer County, SD	46033	SD	8	8,972	Small metro	94	1,048	10.6%	Yellow
Davison County, SD	46035	SD	8	19,775	Micropolitan	228	1,153	4.4%	Green
Day County, SD	46037	SD	8	5,424	Non-core	<20 tests	<20 tests	<20 tests	Green
Deuel County, SD	46039	SD	8	4,351	Non-core	20	460	0.0%	Green
Dewey County, SD	46041	SD	8	5,892	Non-core	28	475	21.4%	Yellow
Douglas County, SD	46043	SD	8	2,921	Non-core	<20 tests	<20 tests	<20 tests	Green
Edmunds County, SD	46045	SD	8	3,829	Micropolitan	32	836	9.4%	Yellow
Fall River County, SD	46047	SD	8	6,713	Non-core	121	1,802	6.6%	Yellow
Faulk County, SD	46049	SD	8	2,299	Non-core	25	1,087	4.0%	Green
Grant County, SD	46051	SD	8	7,052	Non-core	82	1,163	7.3%	Yellow
Gregory County, SD	46053	SD	8	4,185	Non-core	58	1,386	10.3%	Yellow
Haakon County, SD	46055	SD	8	1,899	Non-core	<20 tests	<20 tests	<20 tests	Green
Hamlin County, SD	46057	SD	8	6,164	Non-core	<20 tests	<20 tests	<20 tests	Green
Hand County, SD	46059	SD	8	3,191	Non-core	48	1,504	6.2%	Yellow
Hanson County, SD	46061	SD	8	3,453	Micropolitan	37	1,072	16.2%	Yellow
Harding County, SD	46063	SD	8	1,298	Non-core	<20 tests	<20 tests	<20 tests	Green
Hughes County, SD	46065	SD	8	17,526	Micropolitan	266	1,518	2.3%	Green
Hutchinson County, SD	46067	SD	8	7,291	Non-core	108	1,481	16.7%	Yellow
Hyde County, SD	46069	SD	8	1,301	Non-core	<20 tests	<20 tests	<20 tests	Green
Jackson County, SD	46071	SD	8	3,344	Non-core	<20 tests	<20 tests	<20 tests	Green
Jerauld County, SD	46073	SD	8	2,013	Non-core	<20 tests	<20 tests	<20 tests	Green
Jones County, SD	46075	SD	8	903	Non-core	<20 tests	<20 tests	<20 tests	Green
Kingsbury County, SD	46077	SD	8	4,939	Non-core	56	1,134	3.6%	Green
Lake County, SD	46079	SD	8	12,797	Non-core	67	524	0.0%	Green
Lawrence County, SD	46081	SD	8	25,844	Micropolitan	543	2,101	4.8%	Green
Lincoln County, SD	46083	SD	8	61,128	Small metro	814	1,332	7.4%	Yellow
Lyman County, SD	46085	SD	8	3,781	Non-core	<20 tests	<20 tests	<20 tests	Green
Marshall County, SD	46091	SD	8	4,935	Non-core	46	932	13.0%	Yellow
McCook County, SD	46087	SD	8	5,586	Small metro	52	931	7.7%	Yellow
McPherson County, SD	46089	SD	8	2,379	Non-core	148	6,221	0.0%	Green
Meade County, SD	46093	SD	8	28,332	Small metro	351	1,239	11.7%	Yellow
Mellette County, SD	46095	SD	8	2,061	Non-core	<20 tests	<20 tests	<20 tests	Green
Miner County, SD	46097	SD	8	2,216	Non-core	<20 tests	<20 tests	<20 tests	Green
Minnehaha County, SD	46099	SD	8	193,134	Small metro	3,843	1,990	4.6%	Green
Moody County, SD	46101	SD	8	6,576	Non-core	53	806	5.7%	Yellow
Oglala Lakota County, SD	46102	SD	8	14,177	Non-core	36	254	5.6%	Yellow
Pennington County, SD	46103	SD	8	113,775	Small metro	1,466	1,289	8.1%	Yellow
Perkins County, SD	46105	SD	8	2,865	Non-core	<20 tests	<20 tests	<20 tests	Green
Potter County, SD	46107	SD	8	2,153	Non-core	61	2,833	11.5%	Red
Roberts County, SD	46109	SD	8	10,394	Non-core	49	471	6.1%	Yellow
Sanborn County, SD	46111	SD	8	2,344	Non-core	<20 tests	<20 tests	<20 tests	Green
Spink County, SD	46115	SD	8	6,376	Non-core	112	1,757	7.1%	Yellow
Stanley County, SD	46117	SD	8	3,098	Micropolitan	41	1,323	2.4%	Green
Sully County, SD	46119	SD	8	1,391	Micropolitan	30	2,157	3.3%	Green
Todd County, SD	46121	SD	8	10,177	Non-core	21	206	0.0%	Green
Tripp County, SD	46123	SD	8	5,441	Non-core	32	588	9.4%	Yellow
Turner County, SD	46125	SD	8	8,384	Small metro	38	453	5.3%	Yellow

[Data.CMS.gov](https://doh.sd.gov)

Data from February 11-February 24

Or

<https://doh.sd.gov/COVID/Dashboard.aspx>

County Test Positivity Rate			
Green	Monthly	38	58%
Yellow	Weekly	27	41%
Red	2 X Weekly	1	2%
<b>Counties</b>		<b>66</b>	
Nursing Home Testing/Visitation			
Green	Monthly	52	50%
Yellow	Weekly	51	49%
Red	2 X Weekly	1	1%
<b>Nursing Homes</b>		<b>104</b>	

Not intended for press or for reporting purposes.

# Community (County) Test Positivity Rate

- **Low (<5%)** = **Visitation should occur** according to the core principles of COVID-19 infection prevention and facility policies (**beyond** compassionate care visits)
- **Medium (5% – 10%)** = **Visitation should occur** according to the core principles of COVID-19 infection prevention and facility policies (**beyond** compassionate care visits)
- **High (>10%)** = Visitation should only occur for **compassionate care situations** according to the core principles of COVID-19 infection prevention and facility policies

*Not intended for press or for reporting purposes.*



SOUTH DAKOTA DEPARTMENT OF HEALTH

# Compassionate Care – *for counties over 10% test positivity rate*

**Source: CMS Frequently Asked Questions – October 6, 2020**

While end-of-life situations have been used as examples of compassionate care situations, the term “compassionate care situations” **does not exclusively refer to end-of-life situations**. Examples of other types of compassionate care situations include, **but are not limited to**:

- A resident, who was living with their family before recently being admitted to a nursing home, is struggling with the change in environment and lack of physical family support.
- A resident who is grieving after a friend or family member recently passed away.
- A resident who needs cueing and encouragement with eating or drinking, previously provided by family and/or caregiver(s), is experiencing weight loss or dehydration.
- A resident, who used to talk and interact with others, is experiencing emotional distress, seldom speaking, or crying more frequently (when the resident had rarely cried in the past).

Allowing a visit in these situations would be consistent with the intent of, “compassionate care situations.” Also, in addition to family members, compassionate care visits can be conducted by any individual that can meet the resident’s needs, such as clergy or lay persons offering religious and spiritual support.

**Furthermore, the above list is not an exhaustive list** as there may be other compassionate care situations not included.

*Not intended for press or for reporting purposes.*



SOUTH DAKOTA DEPARTMENT OF HEALTH

# The Core Principles of COVID-19 Infection Prevention

## The Core Principles of COVID-19 Infection Prevention

- **Screening** of all who enter the facility for signs and symptoms of COVID-19 (e.g., temperature checks, questions or observations about signs or symptoms), and denial of entry of those with signs or symptoms
- **Hand hygiene** (use of alcohol-based hand rub is preferred)
- **Face covering or mask** (covering mouth and nose)
- **Social distancing** at least six feet between persons
- **Instructional signage** throughout the facility and proper **visitor education** on COVID19 signs and symptoms, infection control precautions, other applicable facility practices (e.g., use of face covering or mask, specified entries, exits and routes to designated areas, hand hygiene)
- **Cleaning and disinfecting** high frequency touched surfaces in the facility often, and designated visitation areas after each visit
- Appropriate use of **Personal Protective Equipment (PPE)**
- **Effective cohorting** of residents (e.g., separate areas dedicated COVID-19 care)
- **Resident and staff testing** are accessible

*Not intended for press or for reporting purposes.*



SOUTH DAKOTA DEPARTMENT OF HEALTH

# PPE and BinaxNOW are available to facilitate visitation in LTC

To facilitate visitation please contact:

- ✓ PPE – email a request form to [COVIDResourceRequests@state.sd.us](mailto:COVIDResourceRequests@state.sd.us) OR call **605.773.3048** and requesting entities must provide information regarding their current facility status.
- ✓ Please send an email to Cindy Koopman-Viergets if you need BinaxNOW testing kits at [Cindy.KoopmanViergets@state.sd.us](mailto:Cindy.KoopmanViergets@state.sd.us)
- ✓ Please look at your **BinaxNOW expiration dates**.
- ✓ Use kits with the earliest expiration date first.

*Not intended for press or for reporting purposes.*



SOUTH DAKOTA DEPARTMENT OF HEALTH

# Vaccination Update

*Not intended for press or for reporting purposes.*



SOUTH DAKOTA DEPARTMENT OF HEALTH

# Doses Administered

Total Doses  
Administered

229,762

State Allocation

Manufacturer	# of Doses
Janssen	0
Moderna	116,294
Pfizer	113,468

Total Persons Administered a  
Vaccine

150,076

State Allocation

Doses	# of Recipients
Moderna - 1 dose	38,162
Moderna - Series Complete	39,066
Pfizer - 1 dose	32,228
Pfizer - Series Complete	40,620

Percent of State  
Population with at least  
1 Dose

26%

State & Federal Allocation

Doses	% of Pop.
1 dose	26.48%
Series Complete	13.93%

*Based on 2019 Census Estimate for those aged 16+ years. Includes aggregate data on IHS and federal entities.*

*Not intended for press or for reporting purposes.*



SOUTH DAKOTA DEPARTMENT OF HEALTH

# SD DOSES Received

Pfizer 1	70,785
Pfizer 2	52,455
Moderna 1	80,100
Moderna 2	55,200
Janssen	7,000
LTC Pharm	24,050
Total	289,590

*Not intended for press or for reporting purposes.*



SOUTH DAKOTA DEPARTMENT OF HEALTH

# SD DOSES Received

This Weeks 1 <sup>st</sup> dose shipments	27,000
This Weeks 2 <sup>nd</sup> dose Shipments	15,890
Doses At Pharmacy	9,976
Second Dose to be given this week	15,190

*Not intended for press or for reporting purposes.*



SOUTH DAKOTA DEPARTMENT OF HEALTH

# Weekly 1<sup>st</sup> Doses Projected

**Pfizer            10,530**

**Moderna    8,300**

*Not intended for press or for reporting purposes.*



SOUTH DAKOTA DEPARTMENT OF HEALTH

# Bonus Doses

Pfizer vaccine yields 6 doses – this will be a label change

Moderna vaccine may yield 1 or 2 extra doses

**DO NOT POOL VACCINE FROM MULTIPLE VIALS**

*Not intended for press or for reporting purposes.*



SOUTH DAKOTA DEPARTMENT OF HEALTH

## Priority groups

[https://doh.sd.gov/documents/COVID19/Vaccine/COVIDVaccineDistribution\\_Phase1.pdf](https://doh.sd.gov/documents/COVID19/Vaccine/COVIDVaccineDistribution_Phase1.pdf)

1A	19,265	23,004 Vaccinated
1B	10,867	2,988 Vaccinated-not including CVS/Walgreens (5807)
1C	49,642	23,898 Vaccinated
1D	265,561	75,124
1E	227,448	

*Not intended for press or for reporting purposes.*



SOUTH DAKOTA DEPARTMENT OF HEALTH

## Expected COVID-19 Vaccine Availability for South Dakota Residents

Phase	Population Group	January	February	March	April	May-December
1A	Frontline healthcare workers and long-term care facility healthcare workers					
1B	Long-term care residents					
1C	EMS, public health workers, and other healthcare workers ( <i>lab &amp; clinic staff</i> )					
	Law enforcement, correctional officers					
we are here 1D	Persons aged 65 years and older					
	High risk patients - dialysis, post-transplant, and active cancer					
	High risk residents in congregate settings					
	Persons with <u>underlying medical conditions</u> under the age of 65					
1D	Teachers and other school/college staff					
	Funeral service workers					
1E	Fire service personnel					
	Includes public-facing workers in essential and <u>critical infrastructure</u>					
Phase 2	All others 16 years and older					

Estimated Vaccine Availability

Note: Tribal vaccine allocation & administration is handled by the IHS  
Veteran vaccine allocation & administration is handled by the VA

Due to limited allocation of the vaccine, the South Dakota Department of Health will use COVID-19 infection rates and will follow recommendations from the Advisory Committee on Immunization Practices (ACIP) to guide which counties will receive the vaccine first. Individuals qualifying for vaccination based on age or underlying health condition must be South Dakota residents.



covid.sd.gov

AS OF 03-03-21

[https://doh.sd.gov/documents/COVID19/Vaccine/COVID\\_VaxAvailabilityTimeline.pdf](https://doh.sd.gov/documents/COVID19/Vaccine/COVID_VaxAvailabilityTimeline.pdf)

Not intended for press or for reporting purposes.



## Underlying Medical Conditions

- Asthma (moderate-to-severe)
- Cancer
- Cerebrovascular Disease (affects blood vessels and blood supply to the brain)
- Chronic Kidney Disease
- COPD (Chronic Obstructive Pulmonary Disease)
- Cystic Fibrosis
- Diabetes Mellitus (type 1 and type 2)
- Down Syndrome
- Heart Conditions, such as Heart Failure, Coronary Artery Disease, or Cardiomyopathies

*Not intended for press or for reporting purposes.*



SOUTH DAKOTA DEPARTMENT OF HEALTH

## Underlying Medical Conditions

- Hypertension or High Blood Pressure
- Immunocompromised State (weakened immune system)
- Liver Disease
- Neurologic Conditions, such as Dementia
- Pregnancy
- Pulmonary Fibrosis (having damaged or scarred lung tissues)
- Severe Obesity (BMI  $\geq 40$  kg/m<sup>2</sup>)
- Sickle Cell Disease
- Thalassemia (a type of blood disorder)

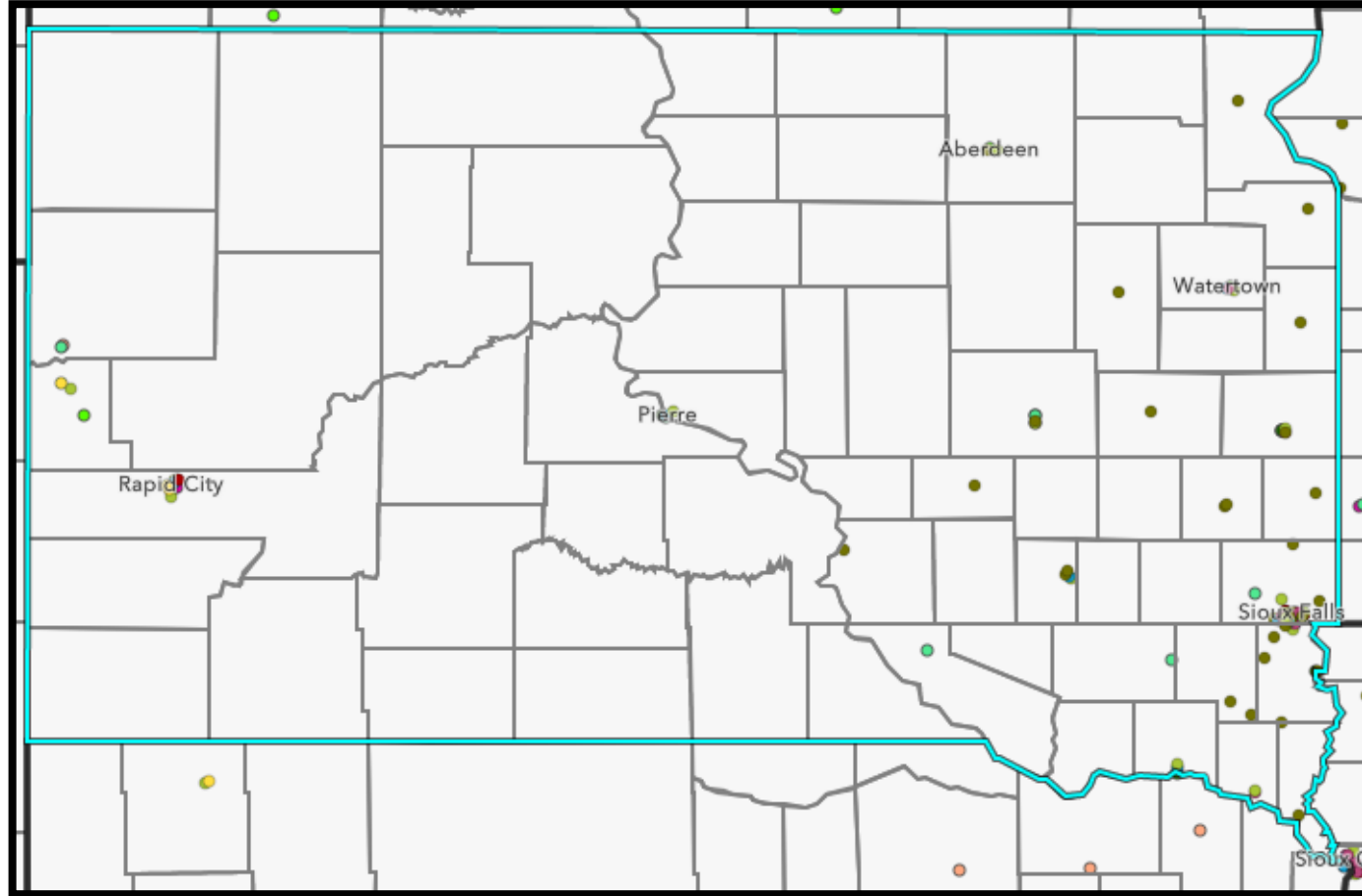
*Not intended for press or for reporting purposes.*



SOUTH DAKOTA DEPARTMENT OF HEALTH



# South Dakota: All Federal Pharmacy Partners



- |                             |               |
|-----------------------------|---------------|
| ● CVS                       | ● Cardinal    |
| ● Walgreens                 | ● Topco       |
| ● Walmart                   | ● CPESN       |
| ● Rite Aid                  | ● ABC         |
| ● Kroger Corporate Pharmacy | ● MHA         |
| ● Albertsons                | ● Health Mart |
| ● Publix Super Markets      | ● Gerimed     |
| ● Retail Business Services  | ● Innovatix   |
| ● COSTCO                    |               |
| ● H-E-B                     |               |
| ● Hy-Vee                    |               |
| ● Meijer Pharmacy           |               |
| ● Southeastern Grocers      |               |
| ● PharMerica                |               |
| ● Lewis Drug                |               |

DRAFT – PRE-DECISIONAL & DELIBERATIVE

*Not intended for press or for reporting purposes.*

# Federal Partners in SD (72,705 ordered)

	First Dose	Second Dose	Total
BOP	100	97	197
VA	12,199	5,723	17,922
IHS	18,099	9,545	27,644
DOD	2,243	1,075	3,318
Totals	32,641	16,440	49,081

*Not intended for press or for reporting purposes.*



SOUTH DAKOTA DEPARTMENT OF HEALTH

# Janssen/Johnson & Johnson Vaccine

- **FDA and ACIP have approved**
- **Viral Vector vaccine**
- **5 dose vials**
- **Refrigerator temps for shipping and storage**

*Not intended for press or for reporting purposes.*



SOUTH DAKOTA DEPARTMENT OF HEALTH

# Infection Prevention

*Not intended for press or for reporting purposes.*



SOUTH DAKOTA DEPARTMENT OF HEALTH

- CDC COVID-19 Guidance: CDC continues to learn more about Coronavirus Disease 2019 (COVID-19) and guidance around infection prevention and control (IPC) for healthcare settings continues to be updated to reflect developing knowledge. Below is a list of some of the key healthcare IPC related guidance documents and resources that have been recently published or updated by CDC:
  - [Interim Guidelines for Collecting and Handling of Clinical Specimens for COVID-19 Testing \(Capillary Fingerstick Specimen Collection\)](#) (2/26/21)
  - [Interim U.S. Guidance for Risk Assessment and Work Restrictions for Healthcare Personnel with Potential Exposure to SARS-CoV-2](#) (2/19/21)
  - [Clinical Questions about COVID-19: Questions and Answers](#) (2/19/21)
  - [Summary for Healthcare Facilities: Strategies for Optimizing the Supply of N95 Respirators During Shortages](#) (2/18/21)
  - [Return to Work Criteria for Healthcare Personnel with SARS-CoV-2 Infection \(Interim Guidance\)](#) (2/16/21)
  - [Strategies to Mitigate Healthcare Personnel Staffing Shortages](#) (2/16/21)
  - [Interim Guidance on Testing Healthcare Personnel for SARS-CoV-2](#) (2/16/21)
  - [Discontinuing Transmission-Based Precautions and Disposition of Patients with SARS-CoV-2 Infection in Healthcare Settings](#) (2/16/21)
  - [Interim Infection Prevention and Control Recommendations for Healthcare Personnel During the COVID-19 Pandemic](#) (2/10/21)
  - [Strategies to Optimize the Supply of N95 Respirators](#) (2/10/21)
  - [Interim Clinical Considerations for Use of mRNA COVID-19 Vaccines Currently Authorized in the United States](#) (2/10/21)

*Not intended for press or for reporting purposes.*



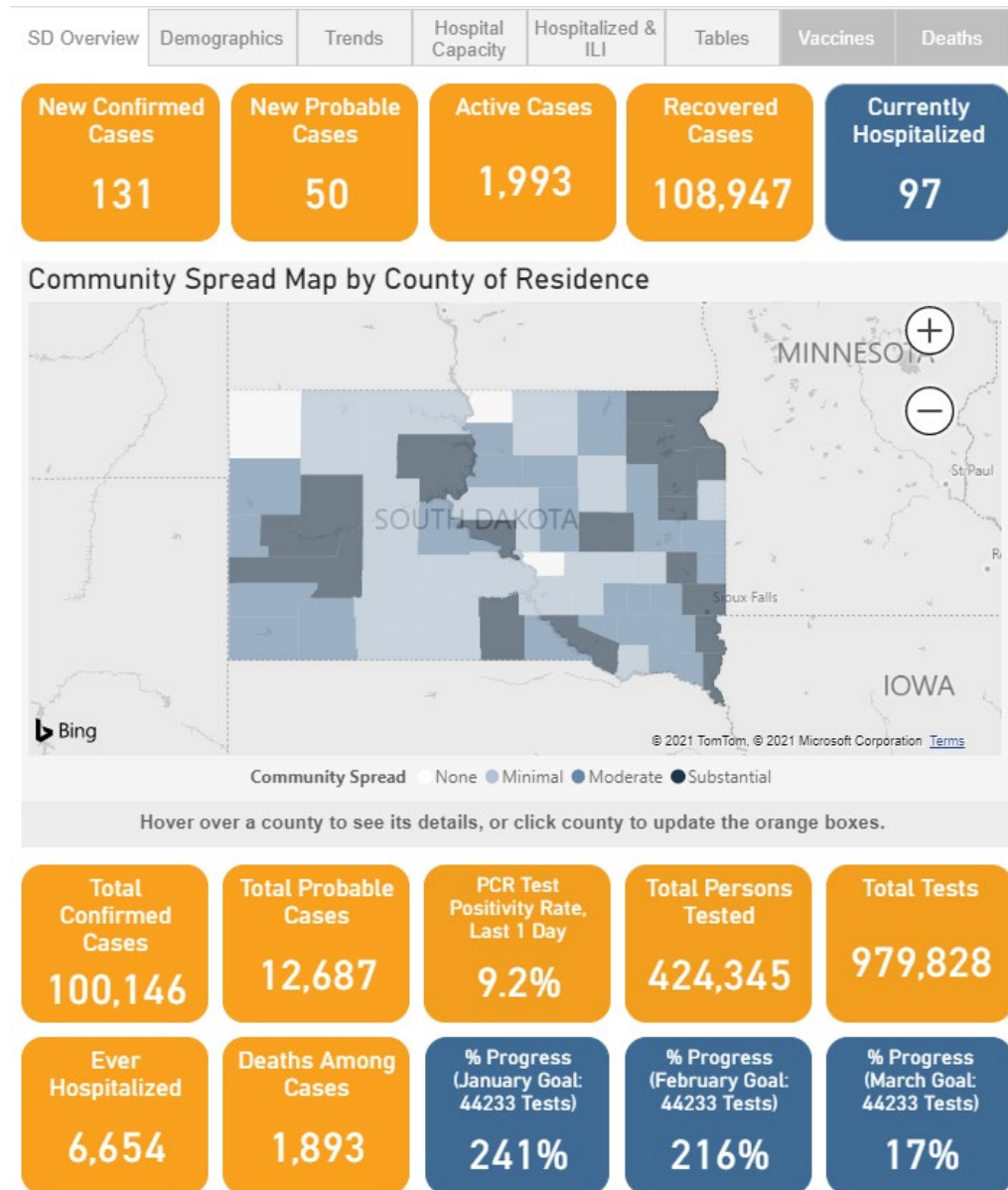
SOUTH DAKOTA DEPARTMENT OF HEALTH

# Community Mitigation

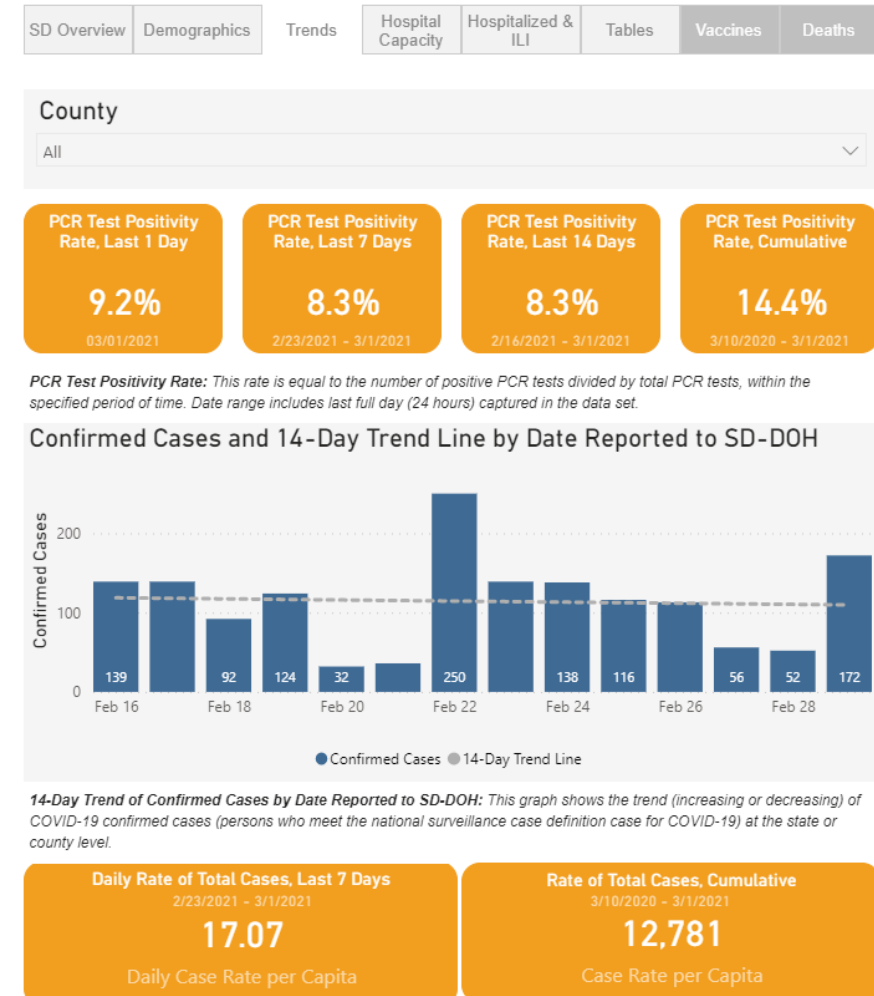
*Not intended for press or for reporting purposes.*



SOUTH DAKOTA DEPARTMENT OF HEALTH



# Dashboard



Not intended for press or for reporting purposes.

# Supply Chain Management

*Not intended for press or for reporting purposes.*



SOUTH DAKOTA DEPARTMENT OF HEALTH

# PPE Request Procedure

All requests for PPE from DOH must be:

- Emailed to [COVIDResourceRequests@state.sd.us](mailto:COVIDResourceRequests@state.sd.us),
- Faxed to **605.773.5942**, or
- Called in to **605.773.3048** to ensure prioritization and coordination of requests.
- Do not duplicate your request by using all three means of communication.
- Any requests received through any other email or number will all be directed to email [COVIDResourceRequests@state.sd.us](mailto:COVIDResourceRequests@state.sd.us) OR call **605.773.3048** and requesting entities must provide information regarding their current facility status.

*Not intended for press or for reporting purposes.*



SOUTH DAKOTA DEPARTMENT OF HEALTH

# On-going Communication

*Not intended for press or for reporting purposes.*



SOUTH DAKOTA DEPARTMENT OF HEALTH

# Helpful sources of information:

[covid.sd.gov](https://covid.sd.gov)

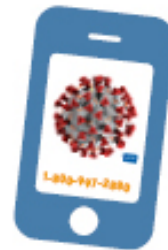
[coronavirus.gov](https://coronavirus.gov)

- **SD COVID-19 Help Line: 800-997-2880**

SOUTH DAKOTA  
**COVID-19 INFORMATION LINE**

Questions about COVID-19? We're here to help.

PLEASE  
CALL **1-800-997-2880**



SOUTH DAKOTA DEPARTMENT OF HEALTH

*Not intended for press or for reporting purposes.*

# Communications

- SD-HAN: [sdhan.sd.gov](https://sdhan.sd.gov)
- [Epi Listserv](#)
- [Lab Listserv](#)
- [HAI Listserv](#)
- [OLC Listserv](#)

Visit **covid.sd.gov** to subscribe

SOUTH DAKOTA  
**COVID-19 INFORMATION LINE**  
Questions about COVID-19? We're here to help.  
PLEASE CALL **1-800-997-2880**



*Not intended for press or for reporting purposes.*



SOUTH DAKOTA DEPARTMENT OF HEALTH