

Overview

<u>Resident Live Births</u>	
Number of Live Births	11,448
Rate per 1,000 Population	12.9
<u>Infant Deaths</u>	
Number of Infant Deaths	80
Rate per 1,000 Live Births	7.0
<u>Resident Deaths</u>	
Number of Resident Deaths	8,273
Rate per 100,000 Population	935.2
<u>Fetal Deaths</u>	
Number of Fetal Deaths	69
Rate per 1,000 Live Births + Fetal Deaths	6.0
<u>Marriages</u>	
Number of Marriages	5,403
Rate per 1,000 Population	6.1
<u>Divorces</u>	
Number of Divorces	2,308
Rate per 1,000 Population	2.6

This report contains selected health statistics that are widely used by the Department of Health, other government agencies, and the public. This information has proven to be useful in determining trends in health status, for planning health care services and for making decisions about public health programs. It also fulfills diverse requirements in the business community and academic research.

Vital statistics data are compiled and maintained under the direction of the Director of the Health Statistics Office (HSO). The data are analyzed by staff from the HSO and can be found in the following sections: Natality, Infant Mortality, Mortality, Marriage and Divorce, and Health Status Profiles. When referring to divorce throughout this report, please note that annulments are included in the Divorce category. Induced Abortion data are now a separate report available online July 1 of each year.

Infectious disease data are collected, compiled, and analyzed within the Office of Disease Prevention. Data on communicable diseases can be found in the Infectious Disease section of the report.

Quick References

Pages

• Tables 1, & 3-6 – Number of Vital Events by County	4-5 and 8-15
• Figure 6 – Graph Comparing State and National Rates	38
• Tables 7, 34, 45, 67 & 69 – Tables Comparing State and National Rates	19, 37, 53, 89, 90

The contacts listed in the Preface welcome suggestions for additional changes that would make the next compilation even more useful to those involved in improving the health of South Dakotans.

Table 1
South Dakota Vital Statistics by County, 2019

	Births		Deaths		Infant Deaths		Fetal Deaths		Marriages		Divorces	
	Number	Rate	Number	Rate	Number	Rate	Number	Rate	Number	Rate	Number	Rate
South Dakota	11,448	12.9	8,273	935.2	80	7.0	69	6.0	5,403	6.1	2,308	2.6
County												
Aurora	39	14.2	32	1,163.2	*	*	*	*	14	5.1	4	1.5
Beadle	284	15.4	205	1,110.9	*	*	*	*	94	5.1	60	3.3
Bennett	47	14.0	32	951.0	*	*	*	*	13	3.9	4	1.2
Bon Homme	59	8.5	92	1,333.1	*	*	*	*	35	5.1	7	1.0
Brookings	410	11.7	202	575.9	*	*	*	*	190	5.4	78	2.2
Brown	464	11.9	337	867.7	*	*	*	*	190	4.9	111	2.9
Brule	73	13.8	64	1,208.2	*	*	*	*	34	6.4	12	2.3
Buffalo	40	20.4	20	1,019.4	*	*	*	*	*	*	*	*
Butte	120	11.5	131	1,256.1	*	*	*	*	64	6.1	23	2.2
Campbell	12	8.7	16	1,162.8	*	*	*	*	3	2.2	*	*
Charles Mix	138	14.9	107	1,151.5	*	*	*	*	52	5.6	13	1.4
Clark	66	17.7	41	1,097.4	*	*	*	*	21	5.6	6	1.6
Clay	141	10.0	97	689.4	*	*	*	*	79	5.6	35	2.5
Codington	297	10.6	270	964.0	*	*	3	10.0	194	6.9	78	2.8
Corson	99	24.2	50	1,223.7	*	*	*	*	10	2.4	*	*
Custer	72	8.0	111	1,237.2	*	*	*	*	178	19.8	30	3.3
Davison	249	12.6	237	1,198.5	*	*	3	11.9	114	5.8	56	2.8
Day	48	8.8	68	1,253.7	*	*	*	*	22	4.1	14	2.6
Deuel	53	12.2	44	1,011.3	*	*	*	*	24	5.5	8	1.8
Dewey	119	20.2	59	1,001.4	*	*	*	*	12	2.0	*	*
Douglas	49	16.8	44	1,506.3	*	*	*	*	15	5.1	6	2.1
Edmunds	48	12.5	34	888.0	*	*	*	*	17	4.4	8	2.1
Fall River	45	6.7	123	1,832.3	*	*	*	*	44	6.6	31	4.6
Faulk	33	14.4	29	1,261.4	*	*	*	*	9	3.9	*	*
Grant	76	10.8	98	1,389.7	*	*	*	*	32	4.5	12	1.7
Gregory	48	11.5	57	1,362.0	*	*	*	*	15	3.6	11	2.6
Haakon	21	11.1	25	1,316.5	*	*	*	*	5	2.6	5	2.6
Hamlin	127	20.6	74	1,200.5	*	*	*	*	34	5.5	16	2.6
Hand	31	9.7	38	1,190.8	*	*	*	*	23	7.2	5	1.6
Hanson	45	13.0	24	695.0	*	*	*	*	26	7.5	8	2.3
Harding	11	8.5	6	462.2	*	*	*	*	6	4.6	*	*
Hughes	218	12.4	202	1,152.6	3	13.8	*	*	77	4.4	49	2.8
Hutchinson	110	15.1	112	1,536.1	*	*	*	*	35	4.8	10	1.4

Table 1 (continued)
South Dakota Vital Statistics by County, 2019

County	Births		Deaths		Infant Deaths		Fetal Deaths		Marriages		Divorces	
	Number	Rate	Number	Rate	Number	Rate	Number	Rate	Number	Rate	Number	Rate
Hyde	18	13.8	26	1,998.5	*	*	*	*	8	6.1	*	*
Jackson	63	18.8	21	628.0	*	*	*	*	14	4.2	3	0.9
Jerauld	20	9.9	38	1,887.7	*	*	*	*	7	3.5	*	*
Jones	7	7.8	8	885.9	*	*	*	*	6	6.6	*	*
Kingsbury	52	10.5	56	1,133.8	*	*	*	*	19	3.8	7	1.4
Lake	119	9.3	86	672.0	*	*	*	*	58	4.5	28	2.2
Lawrence	213	8.2	228	882.2	*	*	*	*	378	14.6	80	3.1
Lincoln	813	13.3	303	495.7	*	*	7	8.5	299	4.9	152	2.5
Lyman	54	14.3	33	872.8	*	*	3	52.6	20	5.3	3	0.8
McCook	83	14.9	83	1,485.9	*	*	*	*	18	3.2	9	1.6
McPherson	24	10.1	41	1,723.4	*	*	*	*	13	5.5	3	1.3
Marshall	68	13.8	37	749.7	*	*	*	*	21	4.3	5	1.0
Meade	245	8.6	242	854.2	*	*	*	*	265	9.4	90	3.2
Mellette	30	14.6	24	1,164.5	*	*	*	*	12	5.8	*	*
Miner	22	9.9	33	1,489.2	*	*	*	*	8	3.6	4	1.8
Minnehaha	2,789	14.4	1,588	822.2	33	11.8	12	4.3	1,227	6.4	599	3.1
Moody	93	14.1	57	866.8	*	*	*	*	40	6.1	10	1.5
Oglala Lakota	256	18.1	136	959.3	3	11.7	3	11.6	5	0.4	*	*
Pennington	1,451	12.8	1,081	950.1	5	3.4	9	6.2	751	6.6	416	3.7
Perkins	42	14.7	42	1,466.0	*	*	*	*	15	5.2	*	*
Potter	22	10.2	25	1,161.2	*	*	*	*	9	4.2	5	2.3
Roberts	166	16.0	116	1,116.0	*	*	3	17.8	67	6.4	20	1.9
Sanborn	32	13.7	27	1,151.9	*	*	*	*	5	2.1	8	3.4
Spink	85	13.3	66	1,035.1	*	*	*	*	27	4.2	9	1.4
Stanley	29	9.4	23	742.4	*	*	*	*	19	6.1	8	2.6
Sully	17	12.2	8	575.1	*	*	*	*	6	4.3	*	*
Todd	235	23.1	87	854.9	*	*	*	*	16	1.6	*	*
Tripp	84	15.4	87	1,599.0	*	*	*	*	30	5.5	8	1.5
Turner	92	11.0	93	1,109.3	*	*	*	*	73	8.7	15	1.8
Union	180	11.3	145	910.1	*	*	*	*	110	6.9	38	2.4
Walworth	71	13.1	59	1,085.6	*	*	*	*	21	3.9	8	1.5
Yankton	247	10.8	273	1,196.6	3	12.1	*	*	149	6.5	62	2.7
Ziebach	34	12.3	19	689.4	*	*	*	*	4	1.5	*	*

Note: Births, deaths, infant deaths, and fetal deaths are by county of residence; marriages and divorces are by county of occurrence. Birth, marriage, and divorce rates are per 1,000 population. Death rates are per 100,000 population. Infant mortality rates are per 1,000 live births. Fetal mortality rates are per 1,000 live births plus fetal deaths.

*Department of Health policy prohibits publishing vital events in cells with less than three events at a county level.

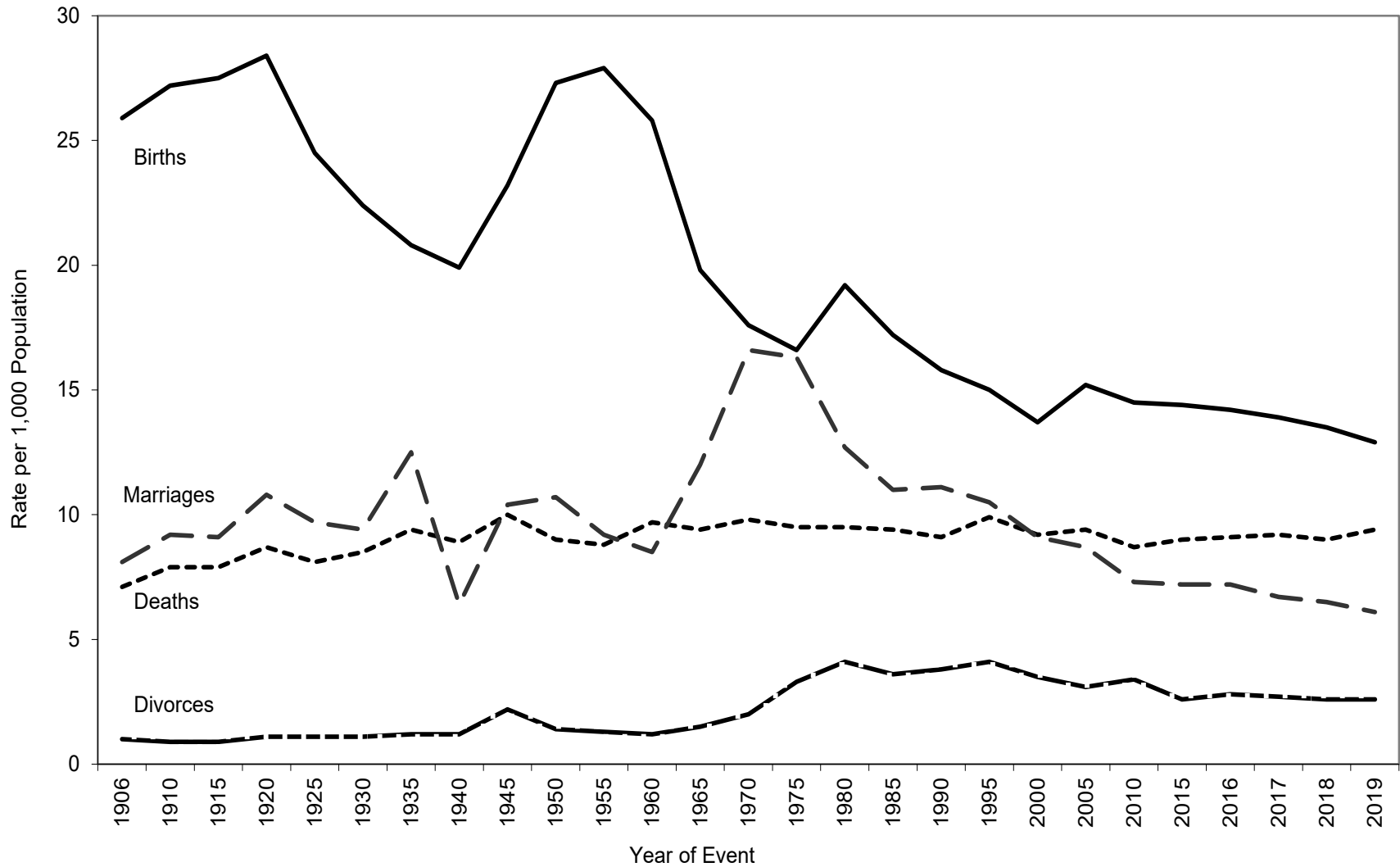
Source: South Dakota Department of Health, Office Health Statistics

**Table 2
Selected Records in Vital Statistics,
South Dakota, 2019**

NATALITY			
Oldest Father:	69	Oldest Mother:	51
Youngest Father:	15	Youngest Mother:	14
Smallest Live Birth:	1 lb. 2 oz.		
Largest Live Birth:	12 lbs. 2 oz.		
Most Popular Names for Infants			
<u>Boy's Names</u>	<u>Number</u>	<u>Girl's Names</u>	<u>Number</u>
Liam	62	Harper	55
Oliver	51	Emma	53
Asher	41	Ava	49
Hudson	39	Olivia	42
Lincoln	39	Charlotte	40
Wyatt	39	Amelia	36
Jack	38	Nora	35
Elijah	36	Evelyn	34
Noah	36	Sophia	30
Theodore	35	Mila	27
MORTALITY			
Oldest Male Decedent:	106	Oldest Female Decedent:	108
DIVORCE			
Longest Duration of a Marriage Ending in a Divorce:	57 Years		

Source: South Dakota Department of Health, Office of Health Statistics

Figure 1
Birth, Death, Marriage, and Divorce Rates for
South Dakota, 1906-2019



Source: South Dakota Department of Health, Office of Health Statistics

Table 3
South Dakota Resident Births by Resident County and Year of Birth, 2010-2019

	Year of Birth									
	2019	2018	2017	2016	2015	2014	2013	2012	2011	2010
Total	11,448	11,890	12,128	12,270	12,323	12,281	12,243	12,092	11,834	11,795
County										
Aurora	39	41	36	49	33	42	40	30	39	29
Beadle	284	284	273	347	297	366	337	327	294	274
Bennett	47	55	61	65	71	72	69	69	76	70
Bon Homme	59	77	64	68	76	56	57	77	62	67
Brookings	410	435	451	414	471	406	430	404	385	379
Brown	464	508	510	557	492	482	512	476	485	467
Brule	73	62	78	71	69	77	70	84	69	74
Buffalo	40	22	47	52	42	53	58	47	57	49
Butte	120	146	131	135	100	142	133	120	136	114
Campbell	12	14	14	8	13	15	12	9	8	16
Charles Mix	138	156	168	164	156	174	151	161	157	156
Clark	66	66	66	65	61	67	51	43	52	48
Clay	141	114	155	147	145	143	166	151	152	138
Codington	297	326	336	370	381	372	410	376	372	375
Corson	99	91	101	101	89	86	93	87	84	78
Custer	72	63	78	69	86	65	71	66	77	85
Davison	249	263	227	257	242	271	263	264	262	258
Day	48	72	62	50	73	56	52	76	59	68
Deuel	53	53	53	64	44	47	46	46	48	51
Dewey	119	138	154	163	148	153	148	151	144	118
Douglas	49	41	44	46	43	40	33	37	36	30
Edmunds	48	34	43	46	48	53	46	46	47	34
Fall River	45	44	51	60	76	55	63	61	49	55
Faulk	33	32	38	31	32	38	23	28	28	24
Grant	76	80	87	84	74	97	80	83	69	81
Gregory	48	50	52	58	50	62	45	44	42	50
Haakon	21	14	26	19	26	17	20	18	23	23
Hamlin	127	125	110	111	121	118	124	127	107	102
Hand	31	35	44	39	24	42	38	28	36	46
Hanson	45	38	42	39	36	49	56	51	44	55
Harding	11	19	15	16	21	20	17	14	9	15
Hughes	218	246	221	233	249	229	255	230	237	225
Hutchinson	110	115	117	120	120	102	107	86	72	81

Table 3 (continued)
South Dakota Resident Births by Resident County and Year of Birth, 2010-2019

County	Year of Birth									
	2019	2018	2017	2016	2015	2014	2013	2012	2011	2010
Hyde	18	14	18	20	15	14	19	9	15	12
Jackson	63	73	92	81	67	71	78	69	68	75
Jerauld	20	24	18	20	16	32	24	23	24	29
Jones	7	17	9	13	11	9	10	10	11	10
Kingsbury	52	71	67	67	64	66	61	54	71	51
Lake	119	128	131	133	134	122	140	128	133	128
Lawrence	213	202	241	241	220	245	230	240	213	252
Lincoln	813	829	846	810	751	766	753	852	781	808
Lyman	54	74	63	82	74	71	69	60	76	72
McCook	83	85	90	68	80	81	75	74	66	80
McPherson	24	24	18	27	22	30	24	25	24	18
Marshall	68	66	73	74	70	72	62	56	60	50
Meade	245	261	258	269	304	318	320	327	314	334
Mellette	30	33	45	44	40	35	37	27	27	38
Miner	22	29	27	21	32	22	28	20	24	19
Minnehaha	2,789	2,890	2,908	2,936	3,046	2,947	2,863	2,811	2,779	2,749
Moody	93	81	87	91	93	93	93	93	86	89
Oglala Lakota	256	261	321	284	337	312	352	350	344	370
Pennington	1,451	1,541	1,466	1,470	1,536	1,540	1,596	1,532	1,502	1,549
Perkins	42	33	37	40	33	35	40	30	29	32
Potter	22	24	15	28	24	24	20	25	27	24
Roberts	166	167	164	168	181	177	201	176	187	159
Sanborn	32	32	33	39	39	37	35	34	28	24
Spink	85	84	82	85	67	69	80	91	72	78
Stanley	29	44	29	42	45	39	35	36	43	41
Sully	17	16	24	16	11	15	17	13	18	18
Todd	235	230	256	260	274	279	250	288	313	242
Tripp	84	88	84	79	71	71	65	66	70	61
Turner	92	101	103	75	104	81	86	89	89	101
Union	180	166	191	163	169	140	150	178	169	179
Walworth	71	66	88	61	86	85	70	66	69	56
Yankton	247	253	269	318	266	281	253	275	246	258
Ziebach	34	24	19	27	32	35	31	48	38	54

Note: Failure of births to add to the total is due to county not stated.
Source: South Dakota Department of Health, Office of Health Statistics

Table 4
South Dakota Resident Deaths by Resident County and Year of Death, 2010-2019

	Year of Death									
	2019	2018	2017	2016	2015	2014	2013	2012	2011	2010
Total	8,273	7,971	7,991	7,838	7,724	7,500	7,079	7,283	7,271	7,087
County										
Aurora	32	37	31	20	24	28	32	29	29	26
Beadle	205	188	177	195	205	196	175	182	201	187
Bennett	32	39	42	45	34	32	29	30	31	37
Bon Homme	92	74	88	75	71	77	78	71	69	69
Brookings	202	202	177	202	182	202	183	230	182	165
Brown	337	369	364	376	362	393	399	378	355	396
Brule	64	43	45	60	57	53	50	69	56	47
Buffalo	20	27	20	33	21	17	16	18	18	16
Butte	131	99	121	98	112	102	93	110	123	100
Campbell	16	12	19	13	19	11	10	17	21	11
Charles Mix	107	113	111	113	129	95	83	82	98	99
Clark	41	37	40	47	41	45	50	40	62	56
Clay	97	101	110	105	101	100	101	101	89	105
Codington	270	240	248	241	235	264	224	229	239	237
Corson	50	51	52	51	47	37	52	43	44	40
Custer	111	100	96	110	92	85	77	88	82	82
Davison	237	235	217	224	210	241	179	213	205	190
Day	68	87	86	76	69	66	73	76	86	65
Deuel	44	50	53	47	48	37	39	38	43	36
Dewey	59	57	59	52	72	68	68	65	48	56
Douglas	44	45	36	42	45	47	38	39	58	50
Edmunds	34	48	45	43	40	39	44	55	50	45
Fall River	123	116	122	113	120	130	118	111	113	104
Faulk	29	35	27	31	40	28	34	27	23	28
Grant	98	83	87	91	89	86	106	66	72	66
Gregory	57	63	56	59	64	64	63	72	58	74
Haakon	25	26	30	22	29	23	35	26	27	22
Hamlin	74	61	55	73	59	61	68	76	78	60
Hand	38	52	41	48	49	41	55	38	41	43
Hanson	24	17	33	22	20	34	21	11	24	22
Harding	6	4	12	8	*	11	4	8	11	12
Hughes	202	159	163	148	154	137	135	124	147	136
Hutchinson	112	111	110	115	119	118	106	106	111	113

Table 4 (continued)
South Dakota Resident Deaths by Resident County and Year of Death, 2010-2019

County	Year of Death									
	2019	2018	2017	2016	2015	2014	2013	2012	2011	2010
Hyde	26	15	29	28	21	15	14	27	15	20
Jackson	21	29	44	37	37	34	34	34	35	35
Jerauld	38	31	30	26	25	28	18	38	32	27
Jones	8	12	16	8	10	9	9	10	16	5
Kingsbury	56	59	68	68	75	69	77	58	73	79
Lake	86	122	129	126	118	110	105	110	101	113
Lawrence	228	255	249	235	240	225	226	240	201	208
Lincoln	303	271	279	259	230	207	181	201	216	181
Lyman	33	45	31	39	41	32	24	42	46	28
McCook	83	68	63	73	85	83	73	80	68	74
McPherson	41	28	33	40	35	43	41	34	37	33
Marshall	37	39	39	63	39	49	47	56	59	73
Meade	242	220	222	193	185	200	190	180	165	157
Mellette	24	32	38	28	26	19	19	24	25	25
Miner	33	35	30	38	34	28	34	27	37	38
Minnehaha	1,588	1,508	1,437	1,382	1,408	1,277	1,256	1,232	1,301	1,273
Moody	57	68	62	48	54	58	53	53	49	57
Oglala Lakota	136	150	164	163	149	112	124	130	109	131
Pennington	1,081	948	972	902	883	832	743	796	795	758
Perkins	42	34	44	41	39	51	39	38	57	48
Potter	25	30	34	39	40	34	29	44	42	28
Roberts	116	121	113	112	106	126	104	141	103	113
Sanborn	27	31	22	29	25	33	35	32	34	18
Spink	66	76	76	83	76	67	84	84	73	72
Stanley	23	12	22	23	19	27	14	17	22	18
Sully	8	16	12	6	11	5	13	13	8	10
Todd	87	109	89	94	85	87	101	98	81	68
Tripp	87	63	78	82	73	73	67	72	66	81
Turner	93	106	119	108	109	124	92	95	105	90
Union	145	122	138	121	116	137	92	119	107	120
Walworth	59	81	68	89	94	92	79	79	77	76
Yankton	273	240	249	240	254	221	207	199	211	211
Ziebach	19	14	19	17	20	12	12	11	11	24

Note: Failure of deaths to add to the total is due to unknown resident county deaths not being shown.
 *Department of Health policy prohibits publishing vital events in cells with less than three events at a county level.
 Source: South Dakota Department of Health, Office of Health Statistics

Table 5
Marriages Occurring in South Dakota by County of Occurrence and Year of Marriage, 2010-2019

	Year of Marriage									
	2019	2018	2017	2016	2015	2014	2013	2012	2011	2010
Total	5,403	5,757	5,862	6,271	6,195	6,040	5,919	6,236	6,145	5,939
County										
Aurora	14	20	12	15	19	10	9	18	17	8
Beadle	94	98	90	120	117	143	135	148	147	138
Bennett	13	11	14	22	21	16	18	21	33	23
Bon Homme	35	37	32	36	34	36	35	54	47	51
Brookings	190	197	227	228	217	240	227	210	178	194
Brown	190	240	252	271	273	238	221	239	239	224
Brule	34	36	40	34	56	45	54	57	46	48
Buffalo	*	*	4	3	7	4	3	6	*	3
Butte	64	60	68	66	78	90	81	80	89	77
Campbell	3	*	5	4	6	8	6	8	6	7
Charles Mix	52	49	41	52	47	36	42	46	58	42
Clark	21	14	23	23	20	27	22	18	21	12
Clay	79	68	110	79	61	71	67	77	86	75
Codington	194	172	180	203	200	207	219	224	268	236
Corson	10	13	11	17	25	25	20	22	30	19
Custer	178	161	174	156	194	181	162	152	137	131
Davison	114	114	115	133	136	120	127	139	156	153
Day	22	29	29	26	34	34	31	40	29	26
Deuel	24	35	34	45	31	38	36	36	31	31
Dewey	12	10	15	24	19	15	15	18	15	7
Douglas	15	20	17	23	20	21	18	20	20	21
Edmunds	17	20	21	24	18	12	19	16	20	17
Fall River	44	42	55	53	66	68	63	60	62	52
Faulk	9	12	9	8	6	15	13	12	20	11
Grant	32	39	40	46	49	52	60	60	67	58
Gregory	15	28	31	41	19	26	19	16	36	30
Haakon	5	8	11	8	9	9	10	17	8	5
Hamlin	34	28	25	33	32	33	31	40	25	37
Hand	23	11	13	19	22	28	12	13	24	20
Hanson	26	18	20	21	15	17	15	6	12	15
Harding	6	5	8	10	7	7	3	9	5	11
Hughes	77	87	122	116	123	122	116	106	109	98
Hutchinson	35	31	30	36	23	39	29	39	33	34

Table 5 (continued)
Marriages Occurring in South Dakota by County of Occurrence and Year of Marriage, 2010-2019

County	Year of Marriage									
	2019	2018	2017	2016	2015	2014	2013	2012	2011	2010
Hyde	8	4	7	4	3	3	3	9	7	6
Jackson	14	9	13	11	11	15	14	11	14	18
Jerauld	7	8	*	6	5	10	15	7	10	10
Jones	6	4	3	6	5	*	6	3	6	5
Kingsbury	19	23	10	28	19	14	22	22	27	31
Lake	58	61	71	83	74	76	83	89	64	81
Lawrence	378	491	459	450	474	448	482	487	466	454
Lincoln	299	325	287	218	167	178	196	155	147	168
Lyman	20	25	14	22	22	17	19	14	16	21
McCook	18	27	31	24	30	31	21	36	24	24
McPherson	13	15	14	8	11	10	7	9	9	7
Marshall	21	37	25	37	28	23	31	33	20	33
Meade	265	252	253	261	321	238	264	204	216	218
Mellette	12	21	23	29	30	19	17	29	21	30
Miner	8	10	13	9	6	9	11	9	14	16
Minnehaha	1,227	1,323	1,373	1,522	1,529	1,494	1,367	1,492	1,398	1,321
Moody	40	38	29	22	36	26	40	46	43	37
Oglala Lakota	5	6	5	6	10	13	8	4	6	6
Pennington	751	780	737	832	786	774	768	863	893	891
Perkins	15	12	11	19	20	19	20	22	16	13
Potter	9	13	8	17	7	18	18	12	18	8
Roberts	67	76	86	91	91	77	85	116	100	104
Sanborn	5	9	10	13	10	10	8	13	7	8
Spink	27	37	32	29	32	29	20	22	33	24
Stanley	19	25	27	24	14	13	18	24	25	20
Sully	6	4	5	6	5	6	4	3	5	*
Todd	16	20	22	14	12	11	13	11	15	19
Tripp	30	24	30	34	28	33	28	36	25	34
Turner	73	73	43	47	45	55	51	34	38	44
Union	110	114	130	175	157	148	146	169	151	189
Walworth	21	15	31	39	26	37	30	32	50	26
Yankton	149	156	181	183	171	149	162	184	180	155
Ziebach	4	3	*	7	6	*	4	9	5	3

Note: *Department of Health policy prohibits publishing vital events in cells with less than three events at a county level.
Source: South Dakota Department of Health, Office of Health Statistics

Table 6
Divorces Occurring in South Dakota by County of Occurrence and Year of Divorce, 2010-2019

	Year of Divorce									
	2019	2018	2017	2016	2015	2014	2013	2012	2011	2010
Total	2,308	2,265	2,340	2,400	2,252	2,374	2,450	2,550	2,694	2,774
County										
Aurora	4	*	7	3	4	5	5	7	6	4
Beadle	60	56	51	48	55	67	52	57	70	78
Bennett	4	3	4	4	3	3	*	4	*	*
Bon Homme	7	13	15	15	15	16	9	15	10	14
Brookings	78	69	66	66	83	57	79	85	93	91
Brown	111	99	125	108	86	86	119	127	138	146
Brule	12	12	14	14	16	19	21	13	17	10
Buffalo	*	*	*	*	*	*	*	*	*	*
Butte	23	25	35	38	35	42	35	35	31	40
Campbell	*	*	*	*	*	*	4	5	*	5
Charles Mix	13	16	10	7	12	11	5	11	12	13
Clark	6	*	5	10	8	9	9	*	8	17
Clay	35	23	27	32	38	40	39	50	36	35
Codington	78	71	87	91	73	92	103	79	96	125
Corson	*	*	4	4	5	*	3	3	*	5
Custer	30	29	31	29	30	21	20	13	32	31
Davison	56	60	51	60	47	58	49	63	68	68
Day	14	11	13	12	11	11	8	11	10	12
Deuel	8	5	10	10	4	13	15	12	13	12
Dewey	*	4	*	*	4	*	4	3	6	4
Douglas	6	5	*	5	7	5	*	9	5	5
Edmunds	8	5	6	15	6	10	8	12	12	8
Fall River	31	24	25	29	23	23	35	36	20	30
Faulk	*	*	5	4	*	5	*	5	3	3
Grant	12	18	10	14	16	17	20	19	22	10
Gregory	11	12	13	10	11	8	10	6	6	5
Haakon	5	*	*	10	*	*	5	6	3	6
Hamlin	16	7	13	13	4	3	12	8	14	14
Hand	5	10	*	11	6	5	10	4	10	8
Hanson	8	*	3	*	5	*	4	*	5	*
Harding	*	3	6	*	3	*	4	3	4	*
Hughes	49	52	62	54	49	43	62	58	64	61
Hutchinson	10	7	11	17	9	18	10	9	16	15

Table 6 (continued)
Divorces Occurring in South Dakota by County of Occurrence and Year of Divorce, 2010-2019

County	Year of Divorce									
	2019	2018	2017	2016	2015	2014	2013	2012	2011	2010
Hyde	*	3	*	*	4	4	4	5	3	3
Jackson	3	5	7	3	3	3	*	5	3	3
Jerauld	*	4	7	3	6	3	8	10	14	6
Jones	*	4	*	*	*	5	5	*	5	*
Kingsbury	7	16	12	13	14	7	12	17	10	16
Lake	28	22	39	29	31	21	32	28	22	36
Lawrence	80	79	77	85	74	90	80	94	109	95
Lincoln	152	134	129	139	111	147	143	142	156	128
Lyman	3	3	4	*	3	3	4	6	4	4
McCook	9	5	12	16	15	21	11	17	7	15
McPherson	3	*	5	4	3	5	*	5	6	10
Marshall	5	11	7	13	8	10	11	11	10	13
Meade	90	109	84	77	99	65	83	90	107	83
Mellette	*	*	*	4	4	*	*	3	*	4
Miner	4	6	*	4	4	8	6	5	3	7
Minnehaha	599	591	611	634	586	610	593	591	662	693
Moody	10	13	12	9	15	13	10	16	16	14
Oglala Lakota	*	4	*	*	*	*	*	*	*	*
Pennington	416	423	432	432	406	452	442	481	478	515
Perkins	*	*	*	*	*	*	3	7	*	*
Potter	5	7	5	4	3	5	3	7	*	4
Roberts	20	17	20	9	11	11	18	20	19	18
Sanborn	8	5	*	3	4	5	6	12	7	9
Spink	9	17	14	18	17	23	17	16	17	15
Stanley	8	6	12	14	7	*	5	10	7	14
Sully	*	3	*	8	4	3	*	*	5	5
Todd	*	*	3	5	3	*	*	*	*	3
Tripp	8	12	6	10	11	11	7	20	10	9
Turner	15	21	17	13	20	17	31	27	36	21
Union	38	36	40	35	38	51	61	46	46	46
Walworth	8	5	3	12	8	10	14	9	15	14
Yankton	62	50	52	60	62	65	69	71	73	89
Ziebach	*	*	*	*	*	*	*	*	*	*

Note: *Department of Health policy prohibits publishing vital events in cells with less than three events at a county level.
Source: South Dakota Department of Health, Office of Health Statistics

