

Overview

<u>Resident Live Births</u>	
Number of Live Births	12,128
Rate per 1,000 Population	13.9
<u>Infant Deaths</u>	
Number of Infant Deaths	94
Rate per 1,000 Live Births	7.75
<u>Resident Deaths</u>	
Number of Resident Deaths	7,991
Rate per 100,000 Population	918.9
<u>Fetal Deaths</u>	
Number of Fetal Deaths	71
Rate per 1,000 Live Births + Fetal Deaths	5.82
<u>Marriages</u>	
Number of Marriages	5,862
Rate per 1,000 Population	6.7
<u>Divorces</u>	
Number of Divorces	2,340
Rate per 1,000 Population	2.7

This report contains selected health statistics that are widely used by the Department of Health, other government agencies, and the public. This information has proven to be useful in determining trends in health status, for planning health care services and for making decisions about public health programs. It also fulfills diverse requirements in the business community and academic research.

Vital statistics data are compiled and maintained under the direction of the Director of the Health Statistics Office (HSO). The data are analyzed by staff from the HSO. Data from HSO can be found in the following sections: Natality, Infant Mortality, Mortality, Induced Abortion, Marriage and Divorce, Health Status Profiles, and Health Status Maps. When referring to divorce throughout this report, please note that annulments are included in the Divorce category.

Infectious disease data are collected, compiled, and analyzed within the Office of Disease Prevention. Data on communicable diseases can be found in the Infectious Disease section of the report.

Quick References

Pages

• Tables 1, & 3-6 – Number of Vital Events by County	4-5 and 8-15
• Figure 6 – Graph Comparing State and National Rates	38
• Tables 7, 34, 45, 78 & 80 – Tables Comparing State and National Rates	19, 37, 53, 103, 104
• Maps 1 through 23 – Health Status Maps by County	203 – 226

The contacts listed in the Preface welcome suggestions for additional changes that would make the next compilation even more useful to those involved in improving the health of South Dakotans.

**Table 1
South Dakota Vital Statistics by County, 2017**

	Births		Deaths		Infant Deaths		Fetal Deaths		Marriages		Divorces	
	Number	Rate	Number	Rate	Number	Rate	Number	Rate	Number	Rate	Number	Rate
South Dakota	12,128	13.9	7,991	918.9	94	7.75	71	5.82	5,862	6.7	2,340	2.7
County												
Aurora	36	13.1	31	1,132.2	*	*	*	*	12	4.4	7	2.6
Beadle	273	15.0	177	974.8	3	10.99	*	*	90	5.0	51	2.8
Bennett	61	17.7	42	1,216.0	*	*	*	*	14	4.1	4	1.2
Bon Homme	64	9.2	88	1,260.0	*	*	*	*	32	4.6	15	2.1
Brookings	451	13.2	177	516.7	3	6.65	*	*	227	6.6	66	1.9
Brown	510	13.0	364	929.1	*	*	3	5.85	252	6.4	125	3.2
Brule	78	14.7	45	847.1	*	*	*	*	40	7.5	14	2.6
Buffalo	47	23.5	20	1,000.5	*	*	*	*	4	2.0	*	*
Butte	131	13.0	121	1,197.2	*	*	*	*	68	6.7	35	3.5
Campbell	14	10.2	19	1,377.8	*	*	*	*	5	3.6	*	*
Charles Mix	168	17.8	111	1,177.3	*	*	*	*	41	4.3	10	1.1
Clark	66	18.0	40	1,090.5	*	*	*	*	23	6.3	5	1.4
Clay	155	11.1	110	786.3	*	*	*	*	110	7.9	27	1.9
Codington	336	12.0	248	882.6	*	*	3	8.85	180	6.4	87	3.1
Corson	101	24.0	52	1,237.2	*	*	*	*	11	2.6	4	1.0
Custer	78	9.0	96	1,104.6	*	*	*	*	174	20.0	31	3.6
Davison	227	11.5	217	1,101.3	3	13.22	*	*	115	5.8	51	2.6
Day	62	11.2	86	1,557.7	*	*	*	*	29	5.3	13	2.4
Deuel	53	12.4	53	1,238.0	*	*	*	*	34	7.9	10	2.3
Dewey	154	26.4	59	1,011.1	*	*	*	*	15	2.6	*	*
Douglas	44	15.0	36	1,228.2	*	*	*	*	17	5.8	*	*
Edmunds	43	11.0	45	1,148.3	*	*	*	*	21	5.4	6	1.5
Fall River	51	7.6	122	1,824.4	*	*	*	*	55	8.2	25	3.7
Faulk	38	16.3	27	1,159.3	*	*	*	*	9	3.9	5	2.1
Grant	87	12.3	87	1,232.1	*	*	*	*	40	5.7	10	1.4
Gregory	52	12.3	56	1,325.1	*	*	*	*	31	7.3	13	3.1
Haakon	26	13.4	30	1,544.0	*	*	*	*	11	5.7	*	*
Hamlin	110	18.5	55	924.7	*	*	*	*	25	4.2	13	2.2
Hand	44	13.4	41	1,251.1	*	*	*	*	13	4.0	*	*
Hanson	42	12.3	33	964.1	*	*	*	*	20	5.8	3	0.9
Harding	15	12.1	12	966.2	*	*	*	*	8	6.4	6	4.8
Hughes	221	12.5	163	922.7	*	*	*	*	122	6.9	62	3.5
Hutchinson	117	15.9	110	1,495.0	*	*	*	*	30	4.1	11	1.5

Table 1 (continued)
South Dakota Vital Statistics by County, 2017

County	Births		Deaths		Infant Deaths		Fetal Deaths		Marriages		Divorces	
	Number	Rate	Number	Rate	Number	Rate	Number	Rate	Number	Rate	Number	Rate
Hyde	18	13.7	29	2,200.3	*	*	*	*	7	5.3	*	*
Jackson	92	28.0	44	1,337.8	*	*	*	*	13	4.0	7	2.1
Jerauld	18	8.9	30	1,479.3	*	*	*	*	*	*	7	3.5
Jones	9	9.6	16	1,709.4	*	*	*	*	3	3.2	*	*
Kingsbury	67	13.5	68	1,373.2	*	*	*	*	10	2.0	12	2.4
Lake	131	10.2	129	1,007.1	3	22.90	*	*	71	5.5	39	3.0
Lawrence	241	9.5	249	979.2	6	24.90	*	*	459	18.1	77	3.0
Lincoln	846	14.9	279	492.4	10	11.82	6	7.04	287	5.1	129	2.3
Lyman	63	16.1	31	794.1	*	*	*	*	14	3.6	4	1.0
McCook	90	16.4	63	1,145.7	*	*	*	*	31	5.6	12	2.2
McPherson	18	7.4	33	1,360.3	*	*	*	*	14	5.8	5	2.1
Marshall	73	15.2	39	811.8	*	*	*	*	25	5.2	7	1.5
Meade	258	9.2	222	792.3	*	*	*	*	253	9.0	84	3.0
Mellette	45	21.6	38	1,819.9	*	*	*	*	23	11.0	*	*
Miner	27	12.1	30	1,346.5	*	*	*	*	13	5.8	*	*
Minnehaha	2,908	15.4	1,437	761.9	19	6.53	16	5.47	1,373	7.3	611	3.2
Moody	87	13.2	62	942.4	*	*	*	*	29	4.4	12	1.8
Oglala Lakota	321	22.4	164	1,142.5	4	12.46	*	*	5	0.3	*	*
Pennington	1,466	13.3	972	882.5	9	6.14	6	4.08	737	6.7	432	3.9
Perkins	37	12.4	44	1,479.5	*	*	*	*	11	3.7	*	*
Potter	15	6.7	34	1,524.0	*	*	*	*	8	3.6	5	2.2
Roberts	164	16.0	113	1,099.4	*	*	*	*	86	8.4	20	1.9
Sanborn	33	13.5	22	898.0	*	*	*	*	10	4.1	*	*
Spink	82	12.8	76	1,185.6	*	*	*	*	32	5.0	14	2.2
Stanley	29	9.6	22	730.7	*	*	*	*	27	9.0	12	4.0
Sully	24	17.1	12	852.9	*	*	*	*	5	3.6	*	*
Todd	256	25.4	89	884.3	7	27.34	3	11.58	22	2.2	3	0.3
Tripp	84	15.4	78	1,428.6	*	*	*	*	30	5.5	6	1.1
Turner	103	12.4	119	1,431.1	4	38.83	*	*	43	5.2	17	2.0
Union	191	12.7	138	918.2	*	*	*	*	130	8.6	40	2.7
Walworth	88	15.9	68	1,226.8	*	*	*	*	31	5.6	3	0.5
Yankton	269	11.9	249	1,098.8	*	*	*	*	181	8.0	52	2.3
Ziebach	19	6.9	19	689.4	*	*	*	*	*	*	*	*

Note: Births, deaths, infant deaths, and fetal deaths are by county of residence; marriages and divorces are by county of occurrence. Birth, marriage, and divorce rates are per 1,000 population. Death rates are per 100,000 population. Infant mortality rates are per 1,000 live births. Fetal mortality rates are per 1,000 live births plus fetal deaths.

*Department of Health policy prohibits publishing vital events in cells with less than three events at a county level.

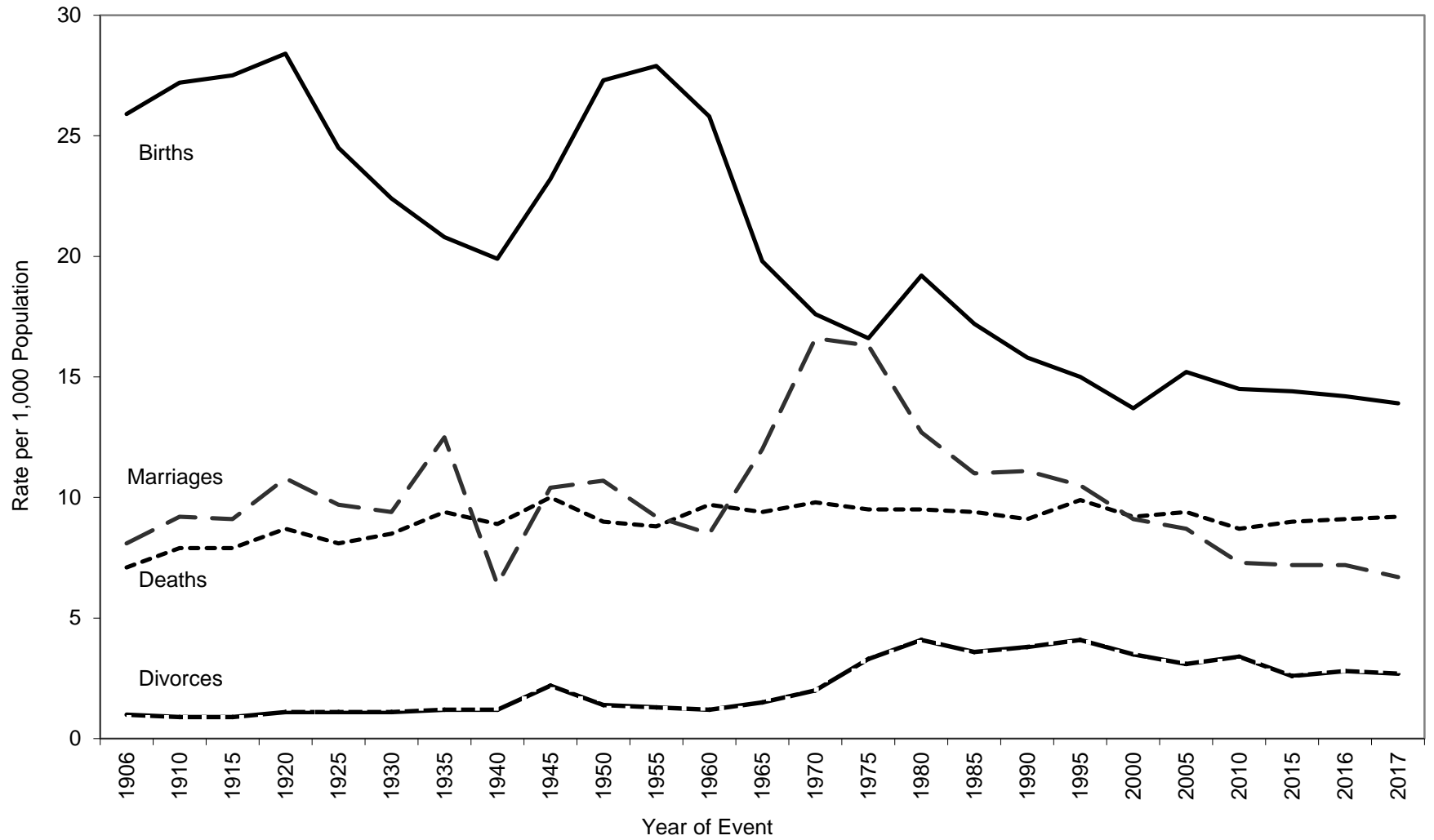
Source: South Dakota Department of Health, Office Health Statistics

**Table 2
Selected Records in Vital Statistics,
South Dakota, 2017**

NATALITY			
Oldest Father:	71	Oldest Mother:	49
Youngest Father:	15	Youngest Mother:	13
Smallest Live Birth:	1 lb. 2 oz.		
Largest Live Birth:	11 lbs. 15 oz.		
Most Popular Names for Infants			
<u>Boy's Names</u>	<u>Number</u>	<u>Girl's Names</u>	<u>Number</u>
Oliver	63	Harper	47
Lincoln	56	Olivia	47
Owen	56	Emma	46
Liam	54	Evelyn	44
William	48	Ava	43
Henry	47	Amelia	37
Logan	43	Nora	35
Benjamin	40	Ella	33
Noah	38	Charlotte	31
Carter	37	Abigail	29
Hudson	37	Piper	29
MORTALITY			
Oldest Male Decedent:	103	Oldest Female Decedent:	109
DIVORCE			
Longest Duration of a Marriage Ending in a Divorce:	56 Years		

Source: South Dakota Department of Health, Office of Health Statistics

Figure 1
Birth, Death, Marriage, and Divorce Rates for
South Dakota, 1906-2017



Source: South Dakota Department of Health, Office of Health Statistics

Table 3
South Dakota Resident Births by Resident County and Year of Birth, 2008-2017

	Year of Birth									
	2017	2016	2015	2014	2013	2012	2011	2010	2009	2008
Total	12,128	12,270	12,323	12,281	12,243	12,092	11,834	11,795	11,930	12,074
County										
Aurora	36	49	33	42	40	30	39	29	34	36
Beadle	273	347	297	366	337	327	294	274	268	277
Bennett	61	65	71	72	69	69	76	70	65	67
Bon Homme	64	68	76	56	57	77	62	67	53	73
Brookings	451	414	471	406	430	404	385	379	383	401
Brown	510	557	492	482	512	476	485	467	475	483
Brule	78	71	69	77	70	84	69	74	68	75
Buffalo	47	52	42	53	58	47	57	49	46	52
Butte	131	135	100	142	133	120	136	114	141	152
Campbell	14	8	13	15	12	9	8	16	18	17
Charles Mix	168	164	156	174	151	161	157	156	162	168
Clark	66	65	61	67	51	43	52	48	57	42
Clay	155	147	145	143	166	151	152	138	175	163
Codington	336	370	381	372	410	376	372	375	399	380
Corson	101	101	89	86	93	87	84	78	74	89
Custer	78	69	86	65	71	66	77	85	62	78
Davison	227	257	242	271	263	264	262	258	296	276
Day	62	50	73	56	52	76	59	68	65	60
Deuel	53	64	44	47	46	46	48	51	47	61
Dewey	154	163	148	153	148	151	144	118	119	155
Douglas	44	46	43	40	33	37	36	30	31	29
Edmunds	43	46	48	53	46	46	47	34	46	55
Fall River	51	60	76	55	63	61	49	55	46	55
Faulk	38	31	32	38	23	28	28	24	29	20
Grant	87	84	74	97	80	83	69	81	81	69
Gregory	52	58	50	62	45	44	42	50	43	40
Haakon	26	19	26	17	20	18	23	23	26	21
Hamlin	110	111	121	118	124	127	107	102	104	109
Hand	44	39	24	42	38	28	36	46	27	36
Hanson	42	39	36	49	56	51	44	55	44	48
Harding	15	16	21	20	17	14	9	15	10	17
Hughes	221	233	249	229	255	230	237	225	250	225
Hutchinson	117	120	120	102	107	86	72	81	80	85

Table 3 (continued)
South Dakota Resident Births by Resident County and Year of Birth, 2008-2017

County	Year of Birth									
	2017	2016	2015	2014	2013	2012	2011	2010	2009	2008
Hyde	18	20	15	14	19	9	15	12	12	7
Jackson	92	81	67	71	78	69	68	75	71	74
Jerauld	18	20	16	32	24	23	24	29	29	24
Jones	9	13	11	9	10	10	11	10	14	13
Kingsbury	67	67	64	66	61	54	71	51	63	77
Lake	131	133	134	122	140	128	133	128	130	103
Lawrence	241	241	220	245	230	240	213	252	257	257
Lincoln	846	810	751	766	753	852	781	808	825	763
Lyman	63	82	74	71	69	60	76	72	53	60
McCook	90	68	80	81	75	74	66	80	84	64
McPherson	18	27	22	30	24	25	24	18	18	14
Marshall	73	74	70	72	62	56	60	50	59	47
Meade	258	269	304	318	320	327	314	334	312	372
Mellette	45	44	40	35	37	27	27	38	35	36
Miner	27	21	32	22	28	20	24	19	28	30
Minnehaha	2,908	2,936	3,046	2,947	2,863	2,811	2,779	2,749	2,761	2,841
Moody	87	91	93	93	93	93	86	89	90	79
Oglala Lakota	321	284	337	312	352	350	344	370	344	367
Pennington	1,466	1,470	1,536	1,540	1,596	1,532	1,502	1,549	1,564	1,563
Perkins	37	40	33	35	40	30	29	32	28	40
Potter	15	28	24	24	20	25	27	24	21	24
Roberts	164	168	181	177	201	176	187	159	169	172
Sanborn	33	39	39	37	35	34	28	24	24	25
Spink	82	85	67	69	80	91	72	78	60	93
Stanley	29	42	45	39	35	36	43	41	39	36
Sully	24	16	11	15	17	13	18	18	19	12
Todd	256	260	274	279	250	288	313	242	274	298
Tripp	84	79	71	71	65	66	70	61	66	70
Turner	103	75	104	81	86	89	89	101	86	96
Union	191	163	169	140	150	178	169	179	181	159
Walworth	88	61	86	85	70	66	69	56	73	53
Yankton	269	318	266	281	253	275	246	258	261	254
Ziebach	19	27	32	35	31	48	38	54	56	37

Note: Failure of births to add to the total is due to county not stated.
Source: South Dakota Department of Health, Office of Health Statistics

Table 4
South Dakota Resident Deaths by Resident County and Year of Death, 2008-2017

	Year of Death									
	2017	2016	2015	2014	2013	2012	2011	2010	2009	2008
Total	7,991	7,838	7,724	7,500	7,079	7,283	7,271	7,087	6,913	7,056
County										
Aurora	31	20	24	28	32	29	29	26	31	30
Beadle	177	195	205	196	175	182	201	187	205	189
Bennett	42	45	34	32	29	30	31	37	30	25
Bon Homme	88	75	71	77	78	71	69	69	83	71
Brookings	177	202	182	202	183	230	182	165	203	213
Brown	364	376	362	393	399	378	355	396	336	350
Brule	45	60	57	53	50	69	56	47	54	43
Buffalo	20	33	21	17	16	18	18	16	24	20
Butte	121	98	112	102	93	110	123	100	92	102
Campbell	19	13	19	11	10	17	21	11	14	14
Charles Mix	111	113	129	95	83	82	98	99	122	91
Clark	40	47	41	45	50	40	62	56	52	42
Clay	110	105	101	100	101	101	89	105	90	67
Codington	248	241	235	264	224	229	239	237	238	242
Corson	52	51	47	37	52	43	44	40	52	36
Custer	96	110	92	85	77	88	82	82	73	62
Davison	217	224	210	241	179	213	205	190	157	207
Day	86	76	69	66	73	76	86	65	95	69
Deuel	53	47	48	37	39	38	43	36	42	62
Dewey	59	52	72	68	68	65	48	56	48	53
Douglas	36	42	45	47	38	39	58	50	41	44
Edmunds	45	43	40	39	44	55	50	45	50	47
Fall River	122	113	120	130	118	111	113	104	110	104
Faulk	27	31	40	28	34	27	23	28	20	34
Grant	87	91	89	86	106	66	72	66	89	80
Gregory	56	59	64	64	63	72	58	74	56	89
Haakon	30	22	29	23	35	26	27	22	15	23
Hamlin	55	73	59	61	68	76	78	60	73	71
Hand	41	48	49	41	55	38	41	43	28	42
Hanson	33	22	20	34	21	11	24	22	19	25
Harding	12	8	*	11	4	8	11	12	8	8
Hughes	163	148	154	137	135	124	147	136	164	143
Hutchinson	110	115	119	118	106	106	111	113	105	123

Table 4 (continued)
South Dakota Resident Deaths by Resident County and Year of Death, 2008-2017

County	Year of Death									
	2017	2016	2015	2014	2013	2012	2011	2010	2009	2008
Hyde	29	28	21	15	14	27	15	20	18	22
Jackson	44	37	37	34	34	34	35	35	29	30
Jerauld	30	26	25	28	18	38	32	27	28	27
Jones	16	8	10	9	9	10	16	5	7	6
Kingsbury	68	68	75	69	77	58	73	79	68	89
Lake	129	126	118	110	105	110	101	113	107	105
Lawrence	249	235	240	225	226	240	201	208	203	196
Lincoln	279	259	230	207	181	201	216	181	166	203
Lyman	31	39	41	32	24	42	46	28	34	21
McCook	63	73	85	83	73	80	68	74	83	71
McPherson	33	40	35	43	41	34	37	33	25	35
Marshall	39	63	39	49	47	56	59	73	65	46
Meade	222	193	185	200	190	180	165	157	178	220
Mellette	38	28	26	19	19	24	25	25	22	24
Miner	30	38	34	28	34	27	37	38	33	37
Minnehaha	1,437	1,382	1,408	1,277	1,256	1,232	1,301	1,273	1,228	1,233
Moody	62	48	54	58	53	53	49	57	54	46
Oglala Lakota	164	163	149	112	124	130	109	131	108	112
Pennington	972	902	883	832	743	796	795	758	699	716
Perkins	44	41	39	51	39	38	57	48	32	43
Potter	34	39	40	34	29	44	42	28	40	47
Roberts	113	112	106	126	104	141	103	113	105	125
Sanborn	22	29	25	33	35	32	34	18	21	17
Spink	76	83	76	67	84	84	73	72	89	77
Stanley	22	23	19	27	14	17	22	18	13	26
Sully	12	6	11	5	13	13	8	10	9	8
Todd	89	94	85	87	101	98	81	68	87	82
Tripp	78	82	73	73	67	72	66	81	79	66
Turner	119	108	109	124	92	95	105	90	92	97
Union	138	121	116	137	92	119	107	120	106	113
Walworth	68	89	94	92	79	79	77	76	60	71
Yankton	249	240	254	221	207	199	211	211	189	206
Ziebach	19	17	20	12	12	11	11	24	17	18

Note: Failure of deaths to add to the total is due to county not stated.

*Department of Health policy prohibits publishing vital events in cells with less than three events at a county level.

Source: South Dakota Department of Health, Office of Health Statistics

Table 5
Marriages Occurring in South Dakota by County of Occurrence and Year of Marriage, 2008-2017

	Year of Marriage									
	2017	2016	2015	2014	2013	2012	2011	2010	2009	2008
Total	5,862	6,271	6,195	6,040	5,919	6,236	6,145	5,939	5,887	6,148
County										
Aurora	12	15	19	10	9	18	17	8	13	16
Beadle	90	120	117	143	135	148	147	138	128	137
Bennett	14	22	21	16	18	21	33	23	17	16
Bon Homme	32	36	34	36	35	54	47	51	30	54
Brookings	227	228	217	240	227	210	178	194	209	195
Brown	252	271	273	238	221	239	239	224	231	225
Brule	40	34	56	45	54	57	46	48	48	52
Buffalo	4	3	7	4	3	6	*	3	3	4
Butte	68	66	78	90	81	80	89	77	60	55
Campbell	5	4	6	8	6	8	6	7	9	7
Charles Mix	41	52	47	36	42	46	58	42	50	54
Clark	23	23	20	27	22	18	21	12	23	16
Clay	110	79	61	71	67	77	86	75	74	90
Codington	180	203	200	207	219	224	268	236	228	245
Corson	11	17	25	25	20	22	30	19	30	21
Custer	174	156	194	181	162	152	137	131	115	123
Davison	115	133	136	120	127	139	156	153	138	153
Day	29	26	34	34	31	40	29	26	36	40
Deuel	34	45	31	38	36	36	31	31	27	39
Dewey	15	24	19	15	15	18	15	7	17	21
Douglas	17	23	20	21	18	20	20	21	25	20
Edmunds	21	24	18	12	19	16	20	17	20	25
Fall River	55	53	66	68	63	60	62	52	51	75
Faulk	9	8	6	15	13	12	20	11	13	8
Grant	40	46	49	52	60	60	67	58	78	88
Gregory	31	41	19	26	19	16	36	30	24	23
Haakon	11	8	9	9	10	17	8	5	9	18
Hamlin	25	33	32	33	31	40	25	37	33	32
Hand	13	19	22	28	12	13	24	20	21	8
Hanson	20	21	15	17	15	6	12	15	14	8
Harding	8	10	7	7	3	9	5	11	8	*
Hughes	122	116	123	122	116	106	109	98	124	137
Hutchinson	30	36	23	39	29	39	33	34	34	31

Table 5 (continued)
Marriages Occurring in South Dakota by County of Occurrence and Year of Marriage, 2008-2017

County	Year of Marriage									
	2017	2016	2015	2014	2013	2012	2011	2010	2009	2008
Hyde	7	4	3	3	3	9	7	6	*	5
Jackson	13	11	11	15	14	11	14	18	9	8
Jerauld	*	6	5	10	15	7	10	10	10	10
Jones	3	6	5	*	6	3	6	5	6	6
Kingsbury	10	28	19	14	22	22	27	31	34	36
Lake	71	83	74	76	83	89	64	81	93	71
Lawrence	459	450	474	448	482	487	466	454	461	485
Lincoln	287	218	167	178	196	155	147	168	149	173
Lyman	14	22	22	17	19	14	16	21	15	17
McCook	31	24	30	31	21	36	24	24	23	31
McPherson	14	8	11	10	7	9	9	7	7	10
Marshall	25	37	28	23	31	33	20	33	27	31
Meade	253	261	321	238	264	204	216	218	208	188
Mellette	23	29	30	19	17	29	21	30	21	18
Miner	13	9	6	9	11	9	14	16	13	8
Minnehaha	1,373	1,522	1,529	1,494	1,367	1,492	1,398	1,321	1,333	1,324
Moody	29	22	36	26	40	46	43	37	43	49
Oglala Lakota	5	6	10	13	8	4	6	6	5	7
Pennington	737	832	786	774	768	863	893	891	850	932
Perkins	11	19	20	19	20	22	16	13	11	17
Potter	8	17	7	18	18	12	18	8	18	11
Roberts	86	91	91	77	85	116	100	104	104	113
Sanborn	10	13	10	10	8	13	7	8	6	9
Spink	32	29	32	29	20	22	33	24	24	22
Stanley	27	24	14	13	18	24	25	20	28	16
Sully	5	6	5	6	4	3	5	*	*	6
Todd	22	14	12	11	13	11	15	19	22	24
Tripp	30	34	28	33	28	36	25	34	31	35
Turner	43	47	45	55	51	34	38	44	36	37
Union	130	175	157	148	146	169	151	189	176	185
Walworth	31	39	26	37	30	32	50	26	16	30
Yankton	181	183	171	149	162	184	180	155	162	190
Ziebach	*	7	6	*	4	9	5	3	*	6

Note: *Department of Health policy prohibits publishing vital events in cells with less than three events at a county level.
Source: South Dakota Department of Health, Office of Health Statistics

Table 6
Divorces Occurring in South Dakota by County of Occurrence and Year of Divorce, 2008-2017

	Year of Divorce									
	2017	2016	2015	2014	2013	2012	2011	2010	2009	2008
Total	2,340	2,400	2,252	2,374	2,450	2,550	2,694	2,774	2,686	2,459
County										
Aurora	7	3	4	5	5	7	6	4	9	6
Beadle	51	48	55	67	52	57	70	78	61	57
Bennett	4	4	3	3	*	4	*	*	5	*
Bon Homme	15	15	15	16	9	15	10	14	18	17
Brookings	66	66	83	57	79	85	93	91	75	75
Brown	125	108	86	86	119	127	138	146	116	103
Brule	14	14	16	19	21	13	17	10	19	13
Buffalo	*	*	*	*	*	*	*	*	*	*
Butte	35	38	35	42	35	35	31	40	51	39
Campbell	*	*	*	*	4	5	*	5	*	*
Charles Mix	10	7	12	11	5	11	12	13	9	9
Clark	5	10	8	9	9	*	8	17	7	6
Clay	27	32	38	40	39	50	36	35	44	34
Codington	87	91	73	92	103	79	96	125	93	109
Corson	4	4	5	*	3	3	*	5	*	*
Custer	31	29	30	21	20	13	32	31	33	23
Davison	51	60	47	58	49	63	68	68	56	69
Day	13	12	11	11	8	11	10	12	16	11
Deuel	10	10	4	13	15	12	13	12	9	13
Dewey	*	*	4	*	4	3	6	4	*	*
Douglas	*	5	7	5	*	9	5	5	6	6
Edmunds	6	15	6	10	8	12	12	8	13	5
Fall River	25	29	23	23	35	36	20	30	25	39
Faulk	5	4	*	5	*	5	3	3	6	3
Grant	10	14	16	17	20	19	22	10	18	16
Gregory	13	10	11	8	10	6	6	5	6	5
Haakon	*	10	*	*	5	6	3	6	7	*
Hamlin	13	13	4	3	12	8	14	14	10	5
Hand	*	11	6	5	10	4	10	8	12	9
Hanson	3	*	5	*	4	*	5	*	4	5
Harding	6	*	3	*	4	3	4	*	*	5
Hughes	62	54	49	43	62	58	64	61	62	42
Hutchinson	11	17	9	18	10	9	16	15	10	12

Table 6 (continued)
Divorces Occurring in South Dakota by County of Occurrence and Year of Divorce, 2008-2017

County	Year of Divorce									
	2017	2016	2015	2014	2013	2012	2011	2010	2009	2008
Hyde	*	*	4	4	4	5	3	3	*	*
Jackson	7	3	3	3	*	5	3	3	6	5
Jerauld	7	3	6	3	8	10	14	6	5	*
Jones	*	*	*	5	5	*	5	*	5	*
Kingsbury	12	13	14	7	12	17	10	16	17	8
Lake	39	29	31	21	32	28	22	36	28	28
Lawrence	77	85	74	90	80	94	109	95	82	68
Lincoln	129	139	111	147	143	142	156	128	115	139
Lyman	4	*	3	3	4	6	4	4	10	7
McCook	12	16	15	21	11	17	7	15	16	15
McPherson	5	4	3	5	*	5	6	10	4	5
Marshall	7	13	8	10	11	11	10	13	8	8
Meade	84	77	99	65	83	90	107	83	128	93
Mellette	*	4	4	*	*	3	*	4	*	*
Miner	*	4	4	8	6	5	3	7	7	6
Minnehaha	611	634	586	610	593	591	662	693	619	637
Moody	12	9	15	13	10	16	16	14	16	17
Oglala Lakota	*	*	*	*	*	*	*	*	3	*
Pennington	432	432	406	452	442	481	478	515	548	463
Perkins	*	*	*	*	3	7	*	*	*	*
Potter	5	4	3	5	3	7	*	4	7	8
Roberts	20	9	11	11	18	20	19	18	11	18
Sanborn	*	3	4	5	6	12	7	9	8	5
Spink	14	18	17	23	17	16	17	15	23	11
Stanley	12	14	7	*	5	10	7	14	9	4
Sully	*	8	4	3	*	*	5	5	5	*
Todd	3	5	3	*	*	*	*	3	3	*
Tripp	6	10	11	11	7	20	10	9	18	7
Turner	17	13	20	17	31	27	36	21	28	24
Union	40	35	38	51	61	46	46	46	53	53
Walworth	3	12	8	10	14	9	15	14	21	12
Yankton	52	60	62	65	69	71	73	89	72	65
Ziebach	*	*	*	*	*	*	*	*	*	*

Note: *Department of Health policy prohibits publishing vital events in cells with less than three events at a county level.
Source: South Dakota Department of Health, Office of Health Statistics

