

Overview

<u>Resident Live Births</u>	
Number of Live Births	12,323
Rate per 1,000 Population	14.4
<u>Infant Deaths</u>	
Number of Infant Deaths	90
Rate per 1,000 Live Births	7.30
<u>Resident Deaths</u>	
Number of Resident Deaths	7,724
Rate per 100,000 Population	899.7
<u>Fetal Deaths</u>	
Number of Fetal Deaths	76
Rate per 1,000 Live Births + Fetal Deaths	6.13
<u>Marriages</u>	
Number of Marriages	6,195
Rate per 1,000 Population	7.2
<u>Divorces</u>	
Number of Divorces	2,252
Rate per 1,000 Population	2.6

This report contains selected health statistics that are widely used by the Department of Health, other government agencies, and the public. This information has proven to be useful in determining trends in health status, for planning health care services and for making decisions about public health programs. It also fulfills diverse requirements in the business community and academic research.

Vital statistics data are compiled and maintained under the direction of the Director of the Health Statistics Office (HSO). The data are analyzed by staff from the HSO. Data from HSO can be found in the following sections: Natality, Infant Mortality, Mortality, Induced Abortion, Marriage and Divorce, Health Status Profiles, and Health Status Maps. When referring to divorce throughout this report, please note that annulments are included in the Divorce category.

Infectious disease data are collected, compiled, and analyzed within the Office of Disease Prevention. Data on communicable diseases can be found in the Infectious Disease section of the report.

Quick References

Pages

• Tables 1, & 3-6 – Number of Vital Events by County	4-5 and 8-15
• Figure 6 – Graph Comparing State and National Rates	38
• Tables 7, 34, 45, 75 & 77 – Tables Comparing State and National Rates	19, 37, 53, 99, 100
• Maps 1 through 23 – Health Status Maps by County	183 - 206

The contacts listed in the Preface welcome suggestions for additional changes that would make the next compilation even more useful to those involved in improving the health of South Dakotans.

Table 1
South Dakota Vital Statistics by County, 2015

	Births		Deaths		Infant Deaths		Fetal Deaths		Marriages		Divorces	
	Number	Rate	Number	Rate	Number	Rate	Number	Rate	Number	Rate	Number	Rate
South Dakota	12,323	14.4	7,724	899.7	90	7.30	76	6.13	6,195	7.2	2,252	2.6
County												
Aurora	33	12.1	24	878.2	*	*	*	*	19	7.0	4	1.5
Beadle	297	16.2	205	1,115.8	3	10.10	3	10.00	117	6.4	55	3.0
Bennett	71	20.7	34	993.3	*	*	*	*	21	6.1	3	0.9
Bon Homme	76	10.9	71	1,016.5	*	*	*	*	34	4.9	15	2.1
Brookings	471	13.9	182	536.9	5	10.62	*	*	217	6.4	83	2.4
Brown	492	12.7	362	933.4	5	10.16	4	8.42	273	7.0	86	2.2
Brule	69	13.1	57	1,079.3	*	*	*	*	56	10.6	16	3.0
Buffalo	42	20.0	21	1,002.4	*	*	*	*	7	3.3	*	*
Butte	100	9.7	112	1,089.2	*	*	*	*	78	7.6	35	3.4
Campbell	13	9.3	19	1,360.1	*	*	*	*	6	4.3	*	*
Charles Mix	156	16.6	129	1,374.8	*	*	5	31.06	47	5.0	12	1.3
Clark	61	16.7	41	1,120.5	*	*	*	*	20	5.5	8	2.2
Clay	145	10.4	101	723.3	*	*	*	*	61	4.4	38	2.7
Codington	381	13.6	235	841.1	*	*	*	*	200	7.2	73	2.6
Corson	89	21.2	47	1,119.8	*	*	*	*	25	6.0	5	1.2
Custer	86	10.2	92	1,089.3	*	*	*	*	194	23.0	30	3.6
Davison	242	12.2	210	1,057.5	*	*	*	*	136	6.8	47	2.4
Day	73	13.2	69	1,245.7	*	*	*	*	34	6.1	11	2.0
Deuel	44	10.2	48	1,107.8	*	*	*	*	31	7.2	4	0.9
Dewey	148	26.0	72	1,266.5	3	20.27	*	*	19	3.3	4	0.7
Douglas	43	14.4	45	1,511.6	*	*	*	*	20	6.7	7	2.4
Edmunds	48	12.0	40	1,000.3	*	*	*	*	18	4.5	6	1.5
Fall River	76	11.1	120	1,747.5	*	*	*	*	66	9.6	23	3.3
Faulk	32	13.7	40	1,711.6	*	*	*	*	6	2.6	*	*
Grant	74	10.4	89	1,246.1	*	*	*	*	49	6.9	16	2.2
Gregory	50	11.9	64	1,523.4	*	*	*	*	19	4.5	11	2.6
Haakon	26	14.0	29	1,558.3	*	*	*	*	9	4.8	*	*
Hamlin	121	20.0	59	975.7	*	*	*	*	32	5.3	4	0.7
Hand	24	7.2	49	1,463.6	*	*	*	*	22	6.6	6	1.8
Hanson	36	10.6	20	590.8	*	*	*	*	15	4.4	5	1.5
Harding	21	16.6	*	*	*	*	*	*	7	5.5	3	2.4
Hughes	249	14.2	154	877.2	4	16.06	3	11.90	123	7.0	49	2.8
Hutchinson	120	16.4	119	1,629.9	*	*	3	24.40	23	3.2	9	1.2

**Table 1 (continued)
South Dakota Vital Statistics by County, 2015**

County	Births		Deaths		Infant Deaths		Fetal Deaths		Marriages		Divorces	
	Number	Rate	Number	Rate	Number	Rate	Number	Rate	Number	Rate	Number	Rate
Hyde	15	10.7	21	1,503.2	*	*	*	*	3	2.1	4	2.9
Jackson	67	20.2	37	1,114.1	*	*	*	*	11	3.3	3	0.9
Jerauld	16	8.0	25	1,251.9	*	*	*	*	5	2.5	6	3.0
Jones	11	11.9	10	1,082.3	*	*	*	*	5	5.4	*	*
Kingsbury	64	12.8	75	1,503.0	*	*	*	*	19	3.8	14	2.8
Lake	134	10.6	118	934.9	*	*	*	*	74	5.9	31	2.5
Lawrence	220	8.9	240	966.7	4	18.18	*	*	474	19.1	74	3.0
Lincoln	751	14.2	230	435.2	5	6.66	6	7.92	167	3.2	111	2.1
Lyman	74	19.1	41	1,057.8	*	*	*	*	22	5.7	3	0.8
McCook	80	14.3	85	1,518.1	*	*	*	*	30	5.4	15	2.7
McPherson	22	9.1	35	1,449.3	*	*	*	*	11	4.6	3	1.2
Marshall	70	14.7	39	817.8	*	*	*	*	28	5.9	8	1.7
Meade	304	11.3	185	685.5	*	*	*	*	321	11.9	99	3.7
Mellette	40	19.5	26	1,268.3	*	*	*	*	30	14.6	4	2.0
Miner	32	14.3	34	1,520.6	*	*	*	*	6	2.7	4	1.8
Minnehaha	3,046	16.4	1,408	760.3	15	4.92	15	4.90	1,529	8.3	586	3.2
Moody	93	14.5	54	839.8	*	*	*	*	36	5.6	15	2.3
Oglala Lakota	337	23.4	149	1,036.7	5	14.84	3	8.82	10	0.7	*	*
Pennington	1,536	14.1	883	812.3	12	7.81	8	5.18	786	7.2	406	3.7
Perkins	33	10.9	39	1,291.8	*	*	*	*	20	6.6	*	*
Potter	24	10.3	40	1,724.1	*	*	*	*	7	3.0	3	1.3
Roberts	181	17.6	106	1,028.0	*	*	*	*	91	8.8	11	1.1
Sanborn	39	16.6	25	1,061.6	*	*	*	*	10	4.2	4	1.7
Spink	67	10.3	76	1,164.9	*	*	*	*	32	4.9	17	2.6
Stanley	45	15.2	19	643.2	*	*	*	*	14	4.7	7	2.4
Sully	11	7.7	11	771.4	*	*	*	*	5	3.5	4	2.8
Todd	274	27.5	85	853.5	*	*	*	*	12	1.2	3	0.3
Tripp	71	13.1	73	1,343.4	*	*	*	*	28	5.2	11	2.0
Turner	104	12.7	109	1,327.8	*	*	*	*	45	5.5	20	2.4
Union	169	11.3	116	778.1	*	*	*	*	157	10.5	38	2.5
Walworth	86	15.8	94	1,727.0	*	*	*	*	26	4.8	8	1.5
Yankton	266	11.7	254	1,118.8	4	15.04	3	11.15	171	7.5	62	2.7
Ziebach	32	11.4	20	713.5	*	*	*	*	6	2.1	*	*

Note: Births, deaths, infant deaths, and fetal deaths are by county of residence; marriages and divorces are by county of occurrence.
 Birth, marriage, and divorce rates are per 1,000 population. Death rates are per 100,000 population. Infant mortality rates are per 1,000 live births.
 Fetal mortality rates are per 1,000 live births plus fetal deaths.

*Department of Health policy prohibits publishing vital events in cells with less than three events at a county level.

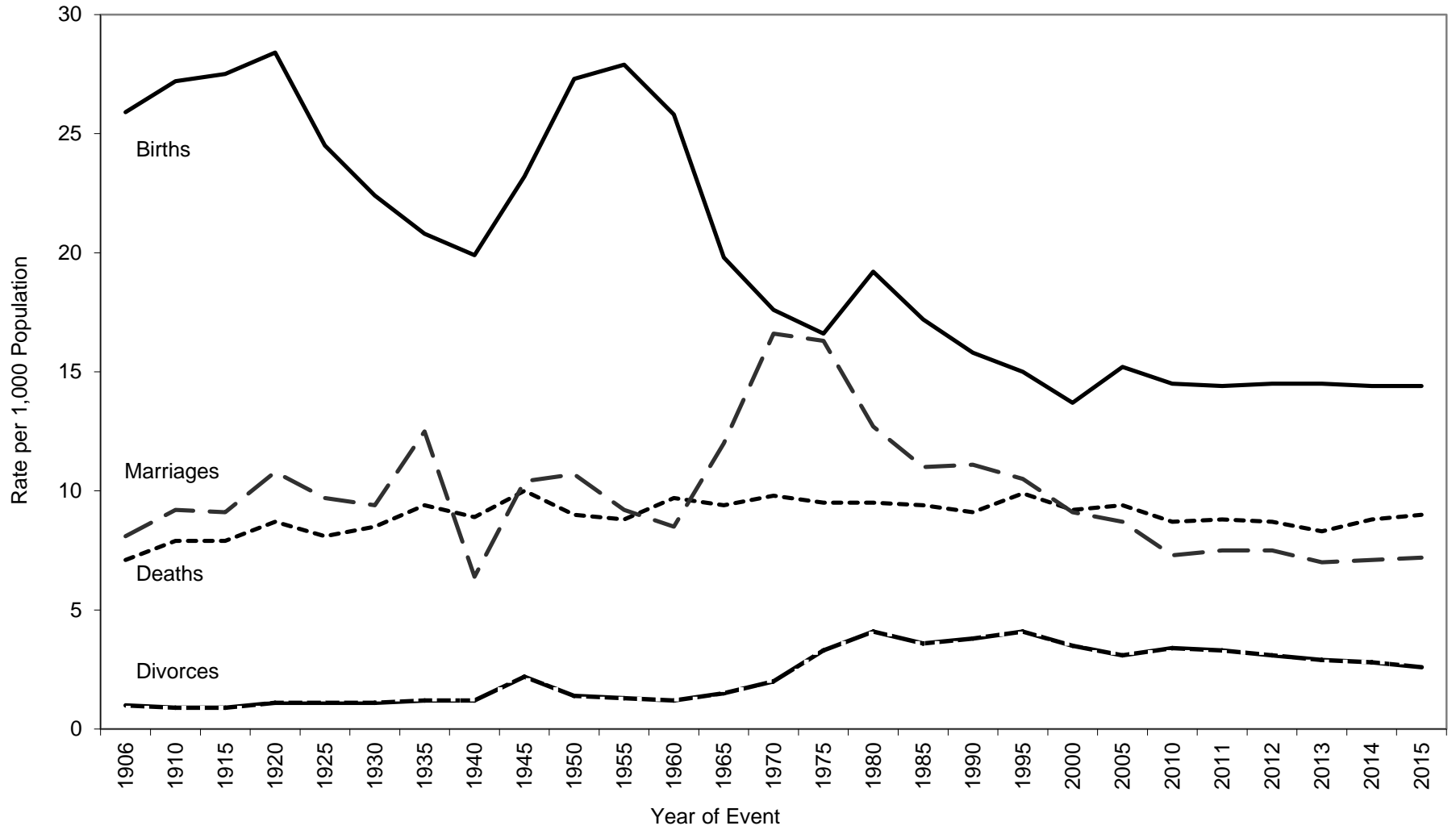
Source: South Dakota Department of Health, Office Health Statistics

**Table 2
Selected Records in Vital Statistics,
South Dakota, 2015**

NATALITY			
Oldest Father:	69	Oldest Mother:	48
Youngest Father:	14	Youngest Mother:	13
Smallest Live Birth:	1 lb. 0 oz.		
Largest Live Birth:	12 lbs. 14 oz.		
Most Popular Names for Infants			
<u>Boy's Names</u>	<u>Number</u>	<u>Girl's Names</u>	<u>Number</u>
Oliver	58	Emma	55
Owen	54	Harper	55
Liam	51	Olivia	49
James	45	Evelyn	43
Henry	44	Ava	42
Benjamin	42	Sophia	39
Jackson	42	Amelia	35
Levi	41	Nora	35
Mason	40	Avery	34
Jacob	38	Grace	34
Noah	38	Isabella	30
MORTALITY			
Oldest Male Decedent:	104	Oldest Female Decedent:	109
DIVORCE			
Longest Duration of a Marriage Ending in a Divorce:	66 Years		

Source: South Dakota Department of Health, Office of Health Statistics

Figure 1
Birth, Death, Marriage, and Divorce Rates for
South Dakota, 1906-2015



Source: South Dakota Department of Health, Office of Health Statistics

Table 3
South Dakota Resident Births by Resident County and Year of Birth, 2006-2015

	Year of Birth									
	2015	2014	2013	2012	2011	2010	2009	2008	2007	2006
Total	12,323	12,281	12,243	12,092	11,834	11,795	11,930	12,074	12,253	11,914
County										
Aurora	33	42	40	30	39	29	34	36	31	33
Beadle	297	366	337	327	294	274	268	277	261	201
Bennett	71	72	69	69	76	70	65	67	55	61
Bon Homme	76	56	57	77	62	67	53	73	70	60
Brookings	471	406	430	404	385	379	383	401	378	352
Brown	492	482	512	476	485	467	475	483	537	499
Brule	69	77	70	84	69	74	68	75	85	60
Buffalo	42	53	58	47	57	49	46	52	64	68
Butte	100	142	133	120	136	114	141	152	146	140
Campbell	13	15	12	9	8	16	18	17	10	11
Charles Mix	156	174	151	161	157	156	162	168	151	162
Clark	61	67	51	43	52	48	57	42	43	42
Clay	145	143	166	151	152	138	175	163	151	162
Codington	381	372	410	376	372	375	399	380	436	401
Corson	89	86	93	87	84	78	74	89	98	92
Custer	86	65	71	66	77	85	62	78	89	77
Davison	242	271	263	264	262	258	296	276	294	271
Day	73	56	52	76	59	68	65	60	73	66
Deuel	44	47	46	46	48	51	47	61	45	67
Dewey	148	153	148	151	144	118	119	155	162	155
Douglas	43	40	33	37	36	30	31	29	34	27
Edmunds	48	53	46	46	47	34	46	55	36	41
Fall River	76	55	63	61	49	55	46	55	54	71
Faulk	32	38	23	28	28	24	29	20	21	25
Grant	74	97	80	83	69	81	81	69	89	88
Gregory	50	62	45	44	42	50	43	40	47	37
Haakon	26	17	20	18	23	23	26	21	22	17
Hamlin	121	118	124	127	107	102	104	109	103	98
Hand	24	42	38	28	36	46	27	36	40	37
Hanson	36	49	56	51	44	55	44	48	42	61
Harding	21	20	17	14	9	15	10	17	12	11
Hughes	249	229	255	230	237	225	250	225	238	231
Hutchinson	120	102	107	86	72	81	80	85	60	74

Table 3 (continued)
South Dakota Resident Births by Resident County and Year of Birth, 2006-2015

County	Year of Birth									
	2015	2014	2013	2012	2011	2010	2009	2008	2007	2006
Hyde	15	14	19	9	15	12	12	7	9	13
Jackson	67	71	78	69	68	75	71	74	81	61
Jerauld	16	32	24	23	24	29	29	24	19	34
Jones	11	9	10	10	11	10	14	13	14	12
Kingsbury	64	66	61	54	71	51	63	77	54	55
Lake	134	122	140	128	133	128	130	103	144	137
Lawrence	220	245	230	240	213	252	257	257	290	290
Lincoln	751	766	753	852	781	808	825	763	785	746
Lyman	74	71	69	60	76	72	53	60	59	57
McCook	80	81	75	74	66	80	84	64	79	60
McPherson	22	30	24	25	24	18	18	14	18	28
Marshall	70	72	62	56	60	50	59	47	54	52
Meade	304	318	320	327	314	334	312	372	350	377
Mellette	40	35	37	27	27	38	35	36	50	46
Miner	32	22	28	20	24	19	28	30	27	28
Minnehaha	3,046	2,947	2,863	2,811	2,779	2,749	2,761	2,841	2,746	2,624
Moody	93	93	93	93	86	89	90	79	88	91
Oglala Lakota	337	312	352	350	344	370	344	367	396	419
Pennington	1,536	1,540	1,596	1,532	1,502	1,549	1,564	1,563	1,599	1,584
Perkins	33	35	40	30	29	32	28	40	24	31
Potter	24	24	20	25	27	24	21	24	33	12
Roberts	181	177	201	176	187	159	169	172	170	160
Sanborn	39	37	35	34	28	24	24	25	37	21
Spink	67	69	80	91	72	78	60	93	75	74
Stanley	45	39	35	36	43	41	39	36	37	45
Sully	11	15	17	13	18	18	19	12	23	24
Todd	274	279	250	288	313	242	274	298	275	283
Tripp	71	71	65	66	70	61	66	70	67	87
Turner	104	81	86	89	89	101	86	96	97	104
Union	169	140	150	178	169	179	181	159	191	186
Walworth	86	85	70	66	69	56	73	53	63	70
Yankton	266	281	253	275	246	258	261	254	283	267
Ziebach	32	35	31	48	38	54	56	37	38	38

Note: Failure of births to add to the total is due to county not stated.
Source: South Dakota Department of Health, Office of Health Statistics

Table 4
South Dakota Resident Deaths by Resident County and Year of Death, 2006-2015

	Year of Death									
	2015	2014	2013	2012	2011	2010	2009	2008	2007	2006
Total	7,724	7,500	7,079	7,283	7,271	7,087	6,913	7,056	6,800	7,038
County										
Aurora	24	28	32	29	29	26	31	30	31	27
Beadle	205	196	175	182	201	187	205	189	193	191
Bennett	34	32	29	30	31	37	30	25	39	23
Bon Homme	71	77	78	71	69	69	83	71	100	79
Brookings	182	202	183	230	182	165	203	213	183	191
Brown	362	393	399	378	355	396	336	350	357	354
Brule	57	53	50	69	56	47	54	43	52	64
Buffalo	21	17	16	18	18	16	24	20	18	17
Butte	112	102	93	110	123	100	92	102	110	95
Campbell	19	11	10	17	21	11	14	14	9	18
Charles Mix	129	95	83	82	98	99	122	91	92	96
Clark	41	45	50	40	62	56	52	42	34	46
Clay	101	100	101	101	89	105	90	67	83	91
Codington	235	264	224	229	239	237	238	242	253	230
Corson	47	37	52	43	44	40	52	36	38	44
Custer	92	85	77	88	82	82	73	62	88	76
Davison	210	241	179	213	205	190	157	207	203	187
Day	69	66	73	76	86	65	95	69	74	94
Deuel	48	37	39	38	43	36	42	62	51	66
Dewey	72	68	68	65	48	56	48	53	57	53
Douglas	45	47	38	39	58	50	41	44	42	33
Edmunds	40	39	44	55	50	45	50	47	47	57
Fall River	120	130	118	111	113	104	110	104	106	107
Faulk	40	28	34	27	23	28	20	34	30	38
Grant	89	86	106	66	72	66	89	80	83	94
Gregory	64	64	63	72	58	74	56	89	54	74
Haakon	29	23	35	26	27	22	15	23	26	32
Hamlin	59	61	68	76	78	60	73	71	80	76
Hand	49	41	55	38	41	43	28	42	36	44
Hanson	20	34	21	11	24	22	19	25	20	19
Harding	*	11	4	8	11	12	8	8	6	8
Hughes	154	137	135	124	147	136	164	143	130	158
Hutchinson	119	118	106	106	111	113	105	123	92	110

Table 4 (continued)
South Dakota Resident Deaths by Resident County and Year of Death, 2006-2015

County	Year of Death									
	2015	2014	2013	2012	2011	2010	2009	2008	2007	2006
Hyde	21	15	14	27	15	20	18	22	25	23
Jackson	37	34	34	34	35	35	29	30	37	39
Jerauld	25	28	18	38	32	27	28	27	25	30
Jones	10	9	9	10	16	5	7	6	14	6
Kingsbury	75	69	77	58	73	79	68	89	76	78
Lake	118	110	105	110	101	113	107	105	93	116
Lawrence	240	225	226	240	201	208	203	196	201	234
Lincoln	230	207	181	201	216	181	166	203	191	226
Lyman	41	32	24	42	46	28	34	21	25	28
McCook	85	83	73	80	68	74	83	71	76	71
McPherson	35	43	41	34	37	33	25	35	34	36
Marshall	39	49	47	56	59	73	65	46	46	53
Meade	185	200	190	180	165	157	178	220	214	223
Mellette	26	19	19	24	25	25	22	24	22	16
Miner	34	28	34	27	37	38	33	37	32	37
Minnehaha	1,408	1,277	1,256	1,232	1,301	1,273	1,228	1,233	1,151	1,150
Moody	54	58	53	53	49	57	54	46	56	69
Oglala Lakota	149	112	124	130	109	131	108	112	117	121
Pennington	883	832	743	796	795	758	699	716	616	645
Perkins	39	51	39	38	57	48	32	43	52	46
Potter	40	34	29	44	42	28	40	47	32	37
Roberts	106	126	104	141	103	113	105	125	101	94
Sanborn	25	33	35	32	34	18	21	17	21	29
Spink	76	67	84	84	73	72	89	77	85	75
Stanley	19	27	14	17	22	18	13	26	7	25
Sully	11	5	13	13	8	10	9	8	9	11
Todd	85	87	101	98	81	68	87	82	81	73
Tripp	73	73	67	72	66	81	79	66	68	81
Turner	109	124	92	95	105	90	92	97	105	104
Union	116	137	92	119	107	120	106	113	101	100
Walworth	94	92	79	79	77	76	60	71	58	86
Yankton	254	221	207	199	211	211	189	206	197	175
Ziebach	20	12	12	11	11	24	17	18	15	9

Note: Failure of deaths to add to the total is due to county not stated.

*Department of Health policy prohibits publishing vital events in cells with less than three events at a county level.

Source: South Dakota Department of Health, Office of Health Statistics

Table 5
Marriages Occurring in South Dakota by County of Occurrence and Year of Marriage, 2006-2015

	Year of Marriage									
	2015	2014	2013	2012	2011	2010	2009	2008	2007	2006
Total	6,195	6,040	5,919	6,236	6,145	5,939	5,887	6,148	6,138	6,303
County										
Aurora	19	10	9	18	17	8	13	16	13	28
Beadle	117	143	135	148	147	138	128	137	129	117
Bennett	21	16	18	21	33	23	17	16	22	26
Bon Homme	34	36	35	54	47	51	30	54	40	42
Brookings	217	240	227	210	178	194	209	195	202	178
Brown	273	238	221	239	239	224	231	225	277	270
Brule	56	45	54	57	46	48	48	52	42	63
Buffalo	7	4	3	6	*	3	3	4	8	*
Butte	78	90	81	80	89	77	60	55	62	51
Campbell	6	8	6	8	6	7	9	7	6	*
Charles Mix	47	36	42	46	58	42	50	54	66	55
Clark	20	27	22	18	21	12	23	16	24	18
Clay	61	71	67	77	86	75	74	90	101	105
Codington	200	207	219	224	268	236	228	245	262	290
Corson	25	25	20	22	30	19	30	21	22	19
Custer	194	181	162	152	137	131	115	123	113	101
Davison	136	120	127	139	156	153	138	153	162	167
Day	34	34	31	40	29	26	36	40	33	35
Deuel	31	38	36	36	31	31	27	39	30	34
Dewey	19	15	15	18	15	7	17	21	21	12
Douglas	20	21	18	20	20	21	25	20	20	21
Edmunds	18	12	19	16	20	17	20	25	24	11
Fall River	66	68	63	60	62	52	51	75	68	68
Faulk	6	15	13	12	20	11	13	8	10	5
Grant	49	52	60	60	67	58	78	88	75	69
Gregory	19	26	19	16	36	30	24	23	23	34
Haakon	9	9	10	17	8	5	9	18	12	14
Hamlin	32	33	31	40	25	37	33	32	36	37
Hand	22	28	12	13	24	20	21	8	19	16
Hanson	15	17	15	6	12	15	14	8	12	21
Harding	7	7	3	9	5	11	8	*	3	10
Hughes	123	122	116	106	109	98	124	137	120	129
Hutchinson	23	39	29	39	33	34	34	31	36	37

Table 5 (continued)

Marriages Occurring in South Dakota by County of Occurrence and Year of Marriage, 2006-2015

County	Year of Marriage									
	2015	2014	2013	2012	2011	2010	2009	2008	2007	2006
Hyde	3	3	3	9	7	6	*	5	4	7
Jackson	11	15	14	11	14	18	9	8	9	12
Jerauld	5	10	15	7	10	10	10	10	12	8
Jones	5	*	6	3	6	5	6	6	*	7
Kingsbury	19	14	22	22	27	31	34	36	28	37
Lake	74	76	83	89	64	81	93	71	98	97
Lawrence	474	448	482	487	466	454	461	485	485	532
Lincoln	167	178	196	155	147	168	149	173	157	158
Lyman	22	17	19	14	16	21	15	17	29	23
McCook	30	31	21	36	24	24	23	31	37	34
McPherson	11	10	7	9	9	7	7	10	5	9
Marshall	28	23	31	33	20	33	27	31	19	33
Meade	321	238	264	204	216	218	208	188	219	227
Mellette	30	19	17	29	21	30	21	18	28	22
Miner	6	9	11	9	14	16	13	8	11	7
Minnehaha	1,529	1,494	1,367	1,492	1,398	1,321	1,333	1,324	1,254	1,336
Moody	36	26	40	46	43	37	43	49	36	61
Oglala Lakota	10	13	8	4	6	6	5	7	8	6
Pennington	786	774	768	863	893	891	850	932	894	883
Perkins	20	19	20	22	16	13	11	17	24	18
Potter	7	18	18	12	18	8	18	11	21	13
Roberts	91	77	85	116	100	104	104	113	92	124
Sanborn	10	10	8	13	7	8	6	9	8	10
Spink	32	29	20	22	33	24	24	22	35	34
Stanley	14	13	18	24	25	20	28	16	10	17
Sully	5	6	4	3	5	*	*	6	7	3
Todd	12	11	13	11	15	19	22	24	22	19
Tripp	28	33	28	36	25	34	31	35	40	35
Turner	45	55	51	34	38	44	36	37	37	38
Union	157	148	146	169	151	189	176	185	191	183
Walworth	26	37	30	32	50	26	16	30	30	34
Yankton	171	149	162	184	180	155	162	190	189	185
Ziebach	6	*	4	9	5	3	*	6	4	4

Note: *Department of Health policy prohibits publishing vital events in cells with less than three events at a county level.

Source: South Dakota Department of Health, Office of Health Statistics

Table 6
Divorces Occurring in South Dakota by County of Occurrence and Year of Divorce, 2006-2015

	Year of Divorce									
	2015	2014	2013	2012	2011	2010	2009	2008	2007	2006
Total	2,252	2,374	2,450	2,550	2,694	2,774	2,686	2,459	2,438	2,465
County										
Aurora	4	5	5	7	6	4	9	6	8	4
Beadle	55	67	52	57	70	78	61	57	59	55
Bennett	3	3	*	4	*	*	5	*	7	*
Bon Homme	15	16	9	15	10	14	18	17	19	19
Brookings	83	57	79	85	93	91	75	75	65	79
Brown	86	86	119	127	138	146	116	103	114	110
Brule	16	19	21	13	17	10	19	13	14	10
Buffalo	*	*	*	*	*	*	*	*	3	*
Butte	35	42	35	35	31	40	51	39	37	34
Campbell	*	*	4	5	*	5	*	*	*	4
Charles Mix	12	11	5	11	12	13	9	9	9	12
Clark	8	9	9	*	8	17	7	6	6	11
Clay	38	40	39	50	36	35	44	34	34	31
Codington	73	92	103	79	96	125	93	109	102	91
Corson	5	*	3	3	*	5	*	*	*	*
Custer	30	21	20	13	32	31	33	23	28	25
Davison	47	58	49	63	68	68	56	69	70	72
Day	11	11	8	11	10	12	16	11	7	19
Deuel	4	13	15	12	13	12	9	13	10	12
Dewey	4	*	4	3	6	4	*	*	*	*
Douglas	7	5	*	9	5	5	6	6	7	3
Edmunds	6	10	8	12	12	8	13	5	8	11
Fall River	23	23	35	36	20	30	25	39	17	33
Faulk	*	5	*	5	3	3	6	3	*	*
Grant	16	17	20	19	22	10	18	16	18	28
Gregory	11	8	10	6	6	5	6	5	8	13
Haakon	*	*	5	6	3	6	7	*	5	*
Hamlin	4	3	12	8	14	14	10	5	9	10
Hand	6	5	10	4	10	8	12	9	7	5
Hanson	5	*	4	*	5	*	4	5	8	3
Harding	3	*	4	3	4	*	*	5	*	*
Hughes	49	43	62	58	64	61	62	42	66	75
Hutchinson	9	18	10	9	16	15	10	12	*	3

Table 6 (continued)
Divorces Occurring in South Dakota by County of Occurrence and Year of Divorce, 2006-2015

County	Year of Divorce									
	2015	2014	2013	2012	2011	2010	2009	2008	2007	2006
Hyde	4	4	4	5	3	3	*	*	*	4
Jackson	3	3	*	5	3	3	6	5	*	9
Jerauld	6	3	8	10	14	6	5	*	*	3
Jones	*	5	5	*	5	*	5	*	3	*
Kingsbury	14	7	12	17	10	16	17	8	6	16
Lake	31	21	32	28	22	36	28	28	22	26
Lawrence	74	90	80	94	109	95	82	68	77	90
Lincoln	111	147	143	142	156	128	115	139	117	111
Lyman	3	3	4	6	4	4	10	7	3	9
McCook	15	21	11	17	7	15	16	15	19	13
McPherson	3	5	*	5	6	10	4	5	5	6
Marshall	8	10	11	11	10	13	8	8	8	11
Meade	99	65	83	90	107	83	128	93	102	78
Mellette	4	*	*	3	*	4	*	*	*	*
Miner	4	8	6	5	3	7	7	6	6	9
Minnehaha	586	610	593	591	662	693	619	637	640	596
Moody	15	13	10	16	16	14	16	17	14	15
Oglala Lakota	*	*	*	*	*	*	3	*	4	*
Pennington	406	452	442	481	478	515	548	463	431	436
Perkins	*	*	3	7	*	*	*	*	*	6
Potter	3	5	3	7	*	4	7	8	7	3
Roberts	11	11	18	20	19	18	11	18	17	21
Sanborn	4	5	6	12	7	9	8	5	4	7
Spink	17	23	17	16	17	15	23	11	8	16
Stanley	7	*	5	10	7	14	9	4	8	11
Sully	4	3	*	*	5	5	5	*	5	3
Todd	3	*	*	*	*	3	3	*	3	6
Tripp	11	11	7	20	10	9	18	7	12	17
Turner	20	17	31	27	36	21	28	24	19	19
Union	38	51	61	46	46	46	53	53	55	46
Walworth	8	10	14	9	15	14	21	12	7	17
Yankton	62	65	69	71	73	89	72	65	80	75
Ziebach	*	*	*	*	*	*	*	*	*	*

Note: *Department of Health policy prohibits publishing vital events in cells with less than three events at a county level.
Source: South Dakota Department of Health, Office of Health Statistics

