

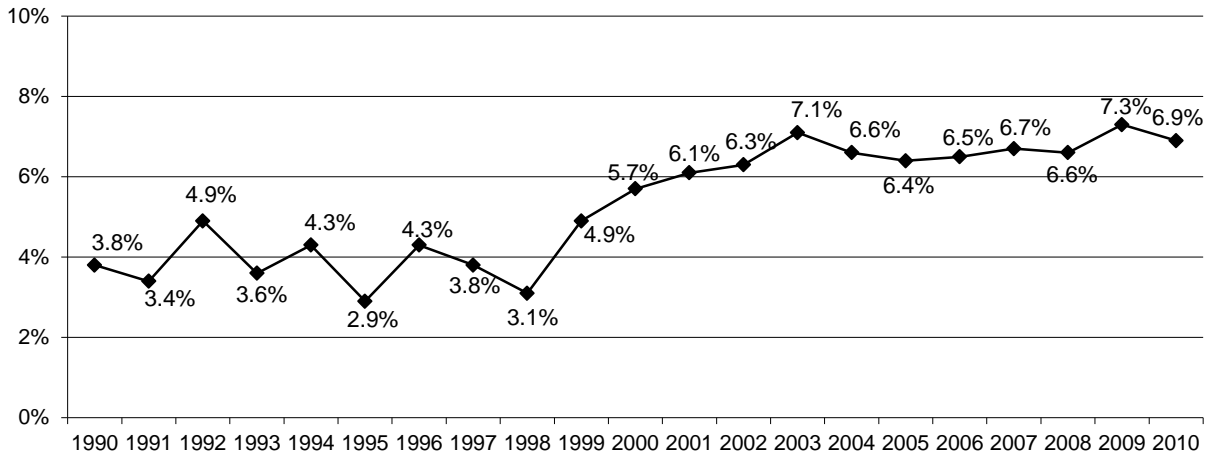
Diabetes

Definition: Respondents ever told by a doctor that they have diabetes, excluding women who were told this while they were pregnant.

Prevalence of Diabetes

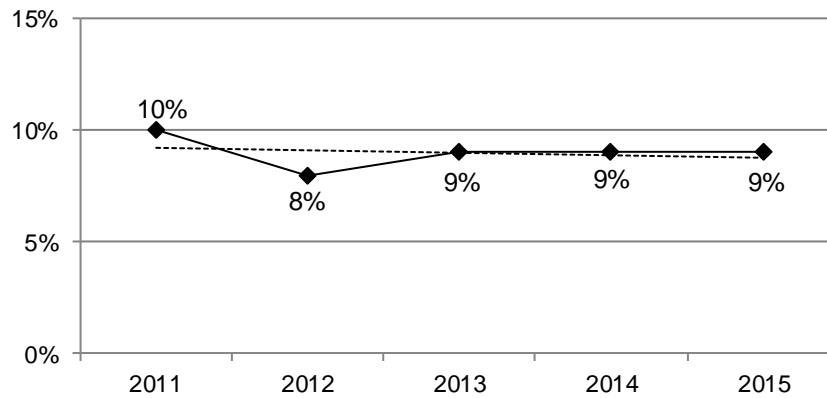
- South Dakota 9%
- Nationwide median 10%

Figure 24
Percent of Respondents Who Were Told They Have Diabetes, 1990-2010



Source: The Behavioral Risk Factor Surveillance System, South Dakota Department of Health, 1990-2010

Figure 25
Percent of Respondents Who Were Told They Have Diabetes, 2011-2015



Note: Beginning in 2011, the CDC began using a different methodology to weight the data; therefore, data prior to 2011 cannot be compared to data since 2011.

Source: The Behavioral Risk Factor Surveillance System, South Dakota Department of Health, 2011-2015

Table 20
Respondents Who Were Told They Have Diabetes, 2011-2015

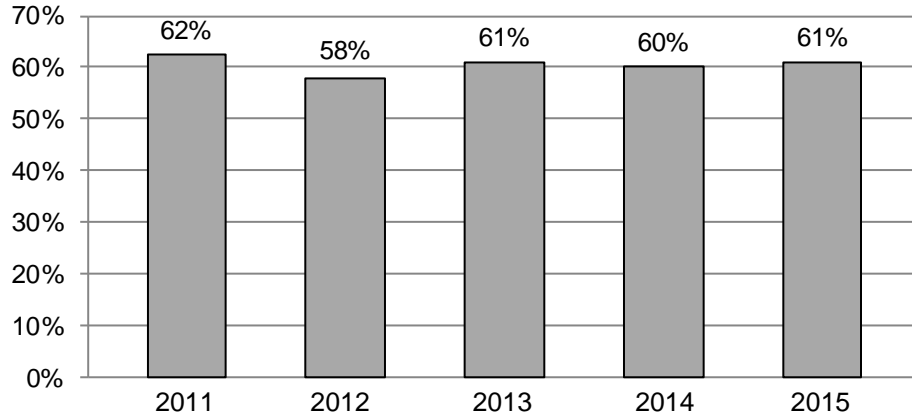
		2011-2015	2011	2012	2013	2014	2015
Total		9%	10%	8%	9%	9%	9%
Gender	Male	10%	11%	7%	9%	10%	10%
	Female	8%	8%	8%	9%	9%	8%
Age	18-24	2%	*	*	*	*	*
	25-34	1%	*	*	*	*	*
	35-44	5%	*	*	*	*	*
	45-54	8%	*	*	*	*	*
	55-64	14%	16%	10%	*	13%	15%
	65-74	20%	*	*	*	*	*
	75+	19%	*	*	*	*	*
Race	White	8%	9%	7%	8%	9%	9%
	American Indian	16%	*	*	*	*	*
Ethnicity	Hispanic	10%	*	*	*	*	*
	Non-Hispanic	9%	10%	8%	9%	9%	9%
Household Income	Less than \$25,000	13%	13%	14%	11%	14%	*
	\$25,000-\$49,999	9%	9%	7%	9%	9%	9%
	\$50,000+	6%	6%	5%	7%	8%	7%
Education	Less than High School, G.E.D.	13%	*	*	*	*	*
	High School, G.E.D.	10%	12%	9%	9%	10%	11%
	Some Post-High School	8%	8%	7%	8%	10%	8%
	College Graduate	6%	5%	6%	7%	6%	7%
Employment Status	Employed for Wages	6%	6%	6%	6%	7%	6%
	Self-employed	6%	*	*	*	*	*
	Unemployed	9%	*	*	*	*	*
	Homemaker	6%	*	*	*	*	*
	Student	1%	*	*	*	*	*
	Retired	19%	20%	15%	19%	20%	21%
	Unable to Work	25%	*	*	*	*	*
Marital Status	Married/Unmarried Couple	9%	10%	7%	9%	9%	9%
	Divorced/Separated	11%	*	*	*	*	*
	Widowed	19%	*	*	*	*	*
	Never Married	5%	*	*	*	*	*
Home Ownership Status	Own Home	9%	9%	8%	9%	9%	10%
	Rent Home	10%	11%	9%	10%	10%	*
Children Status	Children in Household (Ages 18-44)	3%	3%	2%	*	*	*
	No Children in Household (Ages 18-44)	3%	*	*	*	*	*
Phone Status	Landline	11%	10%	10%	12%	11%	13%
	Cell Phone	6%	*	5%	6%	8%	7%
Pregnancy Status	Pregnant (Ages 18-44)	4%	*	*	*	*	*
	Not Pregnant (Ages 18-44)	3%	*	*	*	*	*
County	Minnehaha	8%	*	*	*	*	*
	Pennington	10%	*	*	*	*	*
	Lincoln	7%	*	*	*	*	*
	Brown	7%	*	*	*	*	*
	Brookings	6%	*	*	*	*	*
	Codington	7%	*	*	*	*	*
	Meade	9%	*	*	*	*	*
	Lawrence	8%	*	*	*	*	*

Note: *Results based on small sample sizes have been suppressed.

Source: The Behavioral Risk Factor Surveillance System, South Dakota Department of Health, 2011-2015

Figure 26, on the following page, displays the percent of respondents who had a test for high blood sugar or diabetes within the past three years. The majority of respondents stated that they had a blood sugar or diabetes test within the past three years.

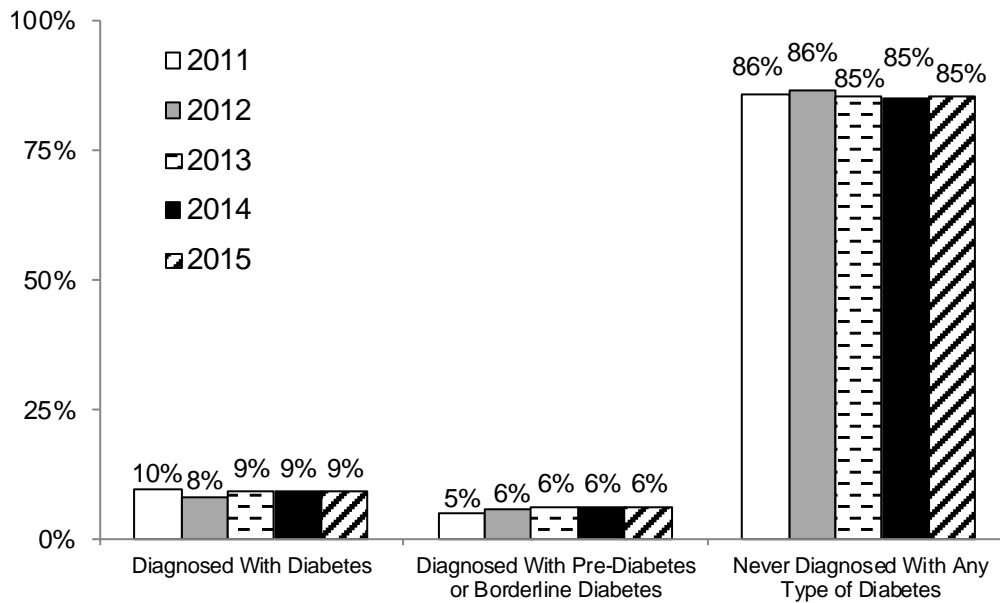
Figure 26
Respondents Who Have Had a Test for High Blood Sugar or Diabetes Within the Past Three Years, 2011-2015



Source: The Behavioral Risk Factor Surveillance System, South Dakota Department of Health, 2011-2015

Figure 27, below, displays the diabetic status of all respondents for the past five years. The majority of respondents for all years stated that they have never been diagnosed with any type of diabetes.

Figure 27
Respondents' Diabetic Status, 2011-2015



Source: The Behavioral Risk Factor Surveillance System, South Dakota Department of Health, 2011-2015