

Overview

<u>Resident Live Births</u>	
Number of Live Births	12,281
Rate per 1,000 Population	14.4
<u>Infant Deaths</u>	
Number of Infant Deaths	73
Rate per 1,000 Live Births	5.94
<u>Resident Deaths</u>	
Number of Resident Deaths	7,500
Rate per 100,000 Population	879.1
<u>Fetal Deaths</u>	
Number of Fetal Deaths	79
Rate per 1,000 Live Births + Fetal Deaths	6.39
<u>Marriages</u>	
Number of Marriages	6,040
Rate per 1,000 Population	7.1
<u>Divorces</u>	
Number of Divorces	2,374
Rate per 1,000 Population	2.8

This report contains selected health statistics that are widely used by the Department of Health, other government agencies, and the public. This information has proven to be useful in determining trends in health status, for planning health care services and for making decisions about public health programs. It also fulfills diverse requirements in the business community and academic research.

Vital statistics data are compiled and maintained under the direction of the Director of the Health Statistics Office (HSO). The data are analyzed by staff from the HSO. Data from HSO can be found in the following sections: Natality, Infant Mortality, Mortality, Induced Abortion, Marriage and Divorce, Health Status Profiles, and Health Status Maps. When referring to Divorce throughout this report, please note that Annulments are included in the Divorce category.

Infectious disease data are collected, compiled, and analyzed within the Office of Disease Prevention. Data on communicable diseases can be found in the Infectious Disease section of the report.

Quick References

Pages

• Tables 2, & 4-7 – Number of Vital Events by County	6-7 and 10-17
• Figure 6 – Graph Comparing State and National Rates	40
• Tables 8, 32, 43, & 66 – Tables Comparing State and National Rates	21, 39, 55, 96
• Maps 1 through 23 – Health Status Maps by County	217 - 239

The contacts listed in the Preface welcome suggestions for additional changes that would make the next compilation even more useful to those involved in improving the health of South Dakotans.

Table 1
Selected South Dakota Health Statistics, 2013-2014

EVENT		2014	2013	Percent Change
BIRTHS:	Number	12,281	12,243	+0.3
	Rate per 1,000 Population	14.4	14.5	-0.7
Birth by Race				
	Number of White Births	9,175	9,142	+0.4
	White Birth Rate per 1,000	12.5	12.6	-0.8
	Number of American Indian Births	1,889	1,956	-3.4
	American Indian Birth Rate per 1,000	24.9	26.0	-4.2
Births (15 through 17 year olds)				
	Number	216	214	+0.9
	Rate per 1,000 15 through 17 year olds	6.4	6.4	0.0
Births (15 through 19 year olds)				
	Number	735	812	-9.5
	Rate per 1,000 15 through 19 year olds	12.7	14.1	-9.9
Low Birth Weight Babies (Less than 2,500 grams)				
	Number	805	770	+4.5
	Rate per 1,000 Births	65.6	62.9	+4.3
DEATHS:	Number	7,500	7,079	+5.9
	Rate per 100,000 Population	879.1	837.9	+4.9
Deaths by Race				
	Number of White Deaths	6,840	6,385	+7.1
	White Death Rate per 100,000	935.2	880.2	+6.2
	Number of American Indian Deaths	562	572	-1.7
	American Indian Death Rate per 100,000	740.7	760.3	-2.6
Deaths (15 through 17 years of age)				
	Number	14	24	-41.7
	Rate per 100,000 15 through 17 year olds	41.4	72.1	-42.6
Deaths (15 through 19 year of age)				
	Number	32	39	-17.9
	Rate per 100,000 15 through 19 year olds	55.3	67.9	-18.6

Table 1 (continued)
Selected South Dakota Health Statistics, 2013-2014

EVENT	2014	2013	Percent Change
INFANT MORTALITY:			
Number	73	80	-8.8
Rate per 1,000 Births	5.94	6.53	-9.0
FETAL DEATHS:			
Number	79	60	+31.7
Rate per 1,000 Births + Fetal Deaths	6.39	4.88	+30.9
MARRIAGES: Number			
Rate per 1,000 Population	6,040	5,919	+2.0
	7.1	7.0	+1.4
DIVORCES: Number			
Rate per 1,000 Population	2,374	2,450	-3.1
	2.8	2.9	-3.4

Note: Birth and death data are for South Dakota residents.
Marriage and divorce data reflect events occurring in South Dakota.
Source: South Dakota Department of Health, Office of Health Statistics

**Table 2
South Dakota Vital Statistics by County, 2014**

	Births		Deaths		Infant Deaths		Fetal Deaths		Marriages		Divorces	
	Number	Rate	Number	Rate	Number	Rate	Number	Rate	Number	Rate	Number	Rate
South Dakota	12,281	14.4	7,500	879.1	73	5.94	79	6.39	6,040	7.1	2,374	2.8
County												
Aurora	42	15.3	28	1,020.0	*	*	*	*	10	3.6	5	1.8
Beadle	366	20.1	196	1,078.8	*	*	3	8.13	143	7.9	67	3.7
Bennett	72	21.0	32	932.9	*	*	*	*	16	4.7	3	0.9
Bon Homme	56	8.0	77	1,096.4	*	*	*	*	36	5.1	16	2.3
Brookings	406	12.2	202	606.4	3	7.39	5	12.17	240	7.2	57	1.7
Brown	482	12.5	393	1,023.2	*	*	*	*	238	6.2	86	2.2
Brule	77	14.5	53	998.3	*	*	*	*	45	8.5	19	3.6
Buffalo	53	25.5	17	818.5	*	*	*	*	4	1.9	*	*
Butte	142	13.8	102	990.5	*	*	*	*	90	8.7	42	4.1
Campbell	15	10.8	11	793.7	*	*	*	*	8	5.8	*	*
Charles Mix	174	18.7	95	1,022.9	*	*	*	*	36	3.9	11	1.2
Clark	67	18.4	45	1,234.6	*	*	*	*	27	7.4	9	2.5
Clay	143	10.3	100	717.8	*	*	*	*	71	5.1	40	2.9
Codington	372	13.3	264	944.9	*	*	*	*	207	7.4	92	3.3
Corson	86	20.6	37	884.7	*	*	*	*	25	6.0	*	*
Custer	65	7.7	85	1,006.5	*	*	*	*	181	21.4	21	2.5
Davison	271	13.6	241	1,212.0	*	*	*	*	120	6.0	58	2.9
Day	56	10.0	66	1,181.1	*	*	*	*	34	6.1	11	2.0
Deuel	47	10.9	37	858.1	*	*	*	*	38	8.8	13	3.0
Dewey	153	27.0	68	1,201.0	*	*	4	25.48	15	2.6	*	*
Douglas	40	13.5	47	1,580.9	*	*	*	*	21	7.1	5	1.7
Edmunds	53	13.3	39	979.2	*	*	*	*	12	3.0	10	2.5
Fall River	55	8.0	130	1,899.2	*	*	*	*	68	9.9	23	3.4
Faulk	38	16.1	28	1,188.0	*	*	*	*	15	6.4	5	2.1
Grant	97	13.4	86	1,187.7	*	*	*	*	52	7.2	17	2.3
Gregory	62	14.7	64	1,517.7	*	*	*	*	26	6.2	8	1.9
Haakon	17	9.2	23	1,245.3	*	*	*	*	9	4.9	*	*
Hamlin	118	19.7	61	1,018.5	*	*	*	*	33	5.5	3	0.5
Hand	42	12.6	41	1,225.7	*	*	*	*	28	8.4	5	1.5
Hanson	49	14.3	34	994.4	*	*	*	*	17	5.0	*	*
Harding	20	16.0	11	880.0	*	*	*	*	7	5.6	*	*
Hughes	229	13.0	137	776.6	*	*	*	*	122	6.9	43	2.4
Hutchinson	102	14.2	118	1,638.9	*	*	*	*	39	5.4	18	2.5

**Table 2 (continued)
South Dakota Vital Statistics by County, 2014**

County	Births		Deaths		Infant Deaths		Fetal Deaths		Marriages		Divorces	
	Number	Rate	Number	Rate	Number	Rate	Number	Rate	Number	Rate	Number	Rate
Hyde	14	10.0	15	1,074.5	*	*	*	*	3	2.1	4	2.9
Jackson	71	21.7	34	1,038.5	*	*	5	65.79	15	4.6	3	0.9
Jerauld	32	15.9	28	1,395.1	*	*	*	*	10	5.0	3	1.5
Jones	9	9.2	9	923.1	*	*	*	*	*	*	5	5.1
Kingsbury	66	13.0	69	1,359.6	*	*	*	*	14	2.8	7	1.4
Lake	122	9.9	110	889.4	*	*	*	*	76	6.1	21	1.7
Lawrence	245	9.9	225	912.5	*	*	*	*	448	18.2	90	3.7
Lincoln	766	14.9	207	401.6	3	3.92	5	6.49	178	3.5	147	2.9
Lyman	71	18.3	32	825.4	*	*	*	*	17	4.4	3	0.8
McCook	81	14.3	83	1,469.3	*	*	*	*	31	5.5	21	3.7
McPherson	30	12.4	43	1,770.3	*	*	*	*	10	4.1	5	2.1
Marshall	72	15.4	49	1,046.3	*	*	*	*	23	4.9	10	2.1
Meade	318	11.8	200	742.1	*	*	*	*	238	8.8	65	2.4
Mellette	35	16.7	19	904.8	*	*	*	*	19	9.0	*	*
Miner	22	9.5	28	1,209.0	*	*	*	*	9	3.9	8	3.5
Minnehaha	2,947	16.1	1,277	698.3	16	5.43	17	5.74	1,494	8.2	610	3.3
Moody	93	14.6	58	910.9	3	32.26	*	*	26	4.1	13	2.0
Oglala Lakota	312	21.9	112	787.7	6	19.23	*	*	13	0.9	*	*
Pennington	1,540	14.2	832	768.6	9	5.84	10	6.45	774	7.2	452	4.2
Perkins	35	11.5	51	1,681.5	*	*	*	*	19	6.3	*	*
Potter	24	10.3	34	1,453.0	*	*	*	*	18	7.7	5	2.1
Roberts	177	17.1	126	1,214.6	*	*	*	*	77	7.4	11	1.1
Sanborn	37	15.8	33	1,412.7	*	*	*	*	10	4.3	5	2.1
Spink	69	10.5	67	1,015.5	*	*	*	*	29	4.4	23	3.5
Stanley	39	13.1	27	905.1	*	*	*	*	13	4.4	*	*
Sully	15	10.4	5	347.7	*	*	*	*	6	4.2	3	2.1
Todd	279	28.2	87	880.4	3	10.75	5	17.61	11	1.1	*	*
Tripp	71	12.9	73	1,324.4	*	*	*	*	33	6.0	11	2.0
Turner	81	9.8	124	1,499.0	*	*	*	*	55	6.6	17	2.1
Union	140	9.3	137	911.6	*	*	*	*	148	9.8	51	3.4
Walworth	85	15.4	92	1,669.4	*	*	*	*	37	6.7	10	1.8
Yankton	281	12.4	221	974.3	3	10.68	*	*	149	6.6	65	2.9
Ziebach	35	12.4	12	424.6	*	*	*	*	*	*	*	*

Note: Births, deaths, infant deaths, and fetal deaths are by county of residence; marriages and divorces are by county of occurrence. Birth, marriage, and divorce rates are per 1,000 population. Death rates are per 100,000 population. Infant mortality rates are per 1,000 live births. Fetal mortality rates are per 1,000 live births plus fetal deaths.

*Department of Health policy prohibits publishing vital events in cells with less than three events at a county level.

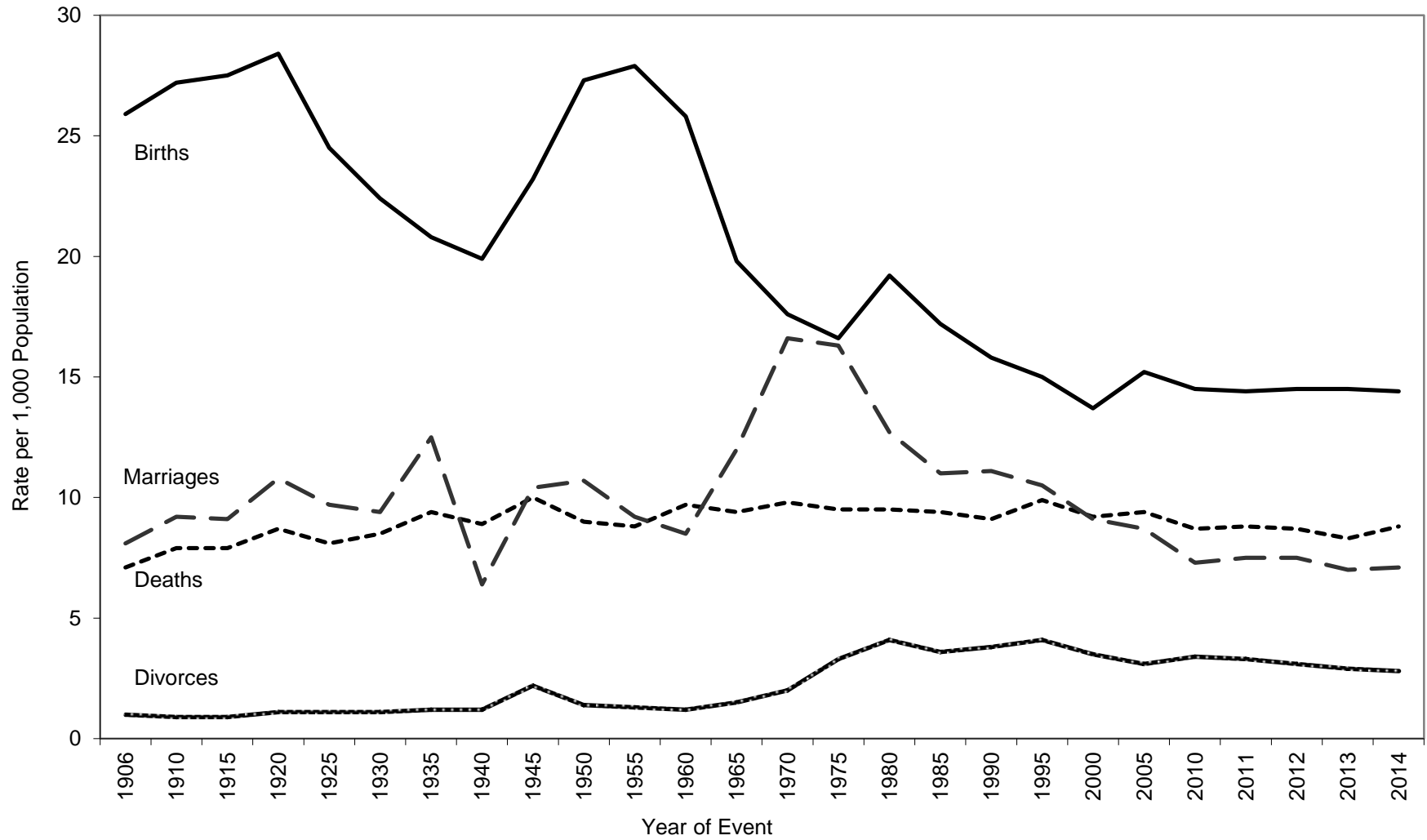
Source: South Dakota Department of Health, Office Health Statistics

**Table 3
Selected Records in Vital Statistics,
South Dakota, 2014**

NATALITY			
Oldest Father:	67	Oldest Mother:	48
Youngest Father:	14	Youngest Mother:	12
Smallest Live Birth:	0 lb. 15 oz.		
Largest Live Birth:	13 lbs. 8 oz.		
Most Popular Names for Infants			
<u>Boy's Names</u>	<u>Number</u>	<u>Girl's Names</u>	<u>Number</u>
Liam	54	Olivia	57
Logan	53	Harper	56
Lincoln	51	Ava	54
Jackson	49	Emma	47
Henry	48	Sophia	40
Noah	48	Ella	37
Oliver	48	Evelyn	34
Hudson	45	Nora	34
Jacob	45	Hadley	31
Mason	44	Amelia	30
William	44	Elizabeth	30
MORTALITY			
Oldest Male Decedent:	104	Oldest Female Decedent:	108
MARRIAGE			
Oldest Groom:	86	Oldest Bride:	82
Youngest Groom:	18	Youngest Bride:	16
DIVORCE			
Longest Duration of a Marriage Ending in a Divorce:	57 Years		

Source: South Dakota Department of Health, Office of Health Statistics

Figure 1
Birth, Death, Marriage, and Divorce Rates for
South Dakota, 1906-2014



Source: South Dakota Department of Health, Office of Health Statistics

Table 4
South Dakota Resident Births by Resident County and Year of Birth, 2005-2014

	Year of Birth									
	2014	2013	2012	2011	2010	2009	2008	2007	2006	2005
Total	12,281	12,243	12,092	11,834	11,795	11,930	12,074	12,253	11,914	11,466
County										
Aurora	42	40	30	39	29	34	36	31	33	24
Beadle	366	337	327	294	274	268	277	261	201	177
Bennett	72	69	69	76	70	65	67	55	61	64
Bon Homme	56	57	77	62	67	53	73	70	60	72
Brookings	406	430	404	385	379	383	401	378	352	355
Brown	482	512	476	485	467	475	483	537	499	430
Brule	77	70	84	69	74	68	75	85	60	74
Buffalo	53	58	47	57	49	46	52	64	68	55
Butte	142	133	120	136	114	141	152	146	140	118
Campbell	15	12	9	8	16	18	17	10	11	6
Charles Mix	174	151	161	157	156	162	168	151	162	154
Clark	67	51	43	52	48	57	42	43	42	36
Clay	143	166	151	152	138	175	163	151	162	139
Codington	372	410	376	372	375	399	380	436	401	387
Corson	86	93	87	84	78	74	89	98	92	93
Custer	65	71	66	77	85	62	78	89	77	85
Davison	271	263	264	262	258	296	276	294	271	293
Day	56	52	76	59	68	65	60	73	66	68
Deuel	47	46	46	48	51	47	61	45	67	51
Dewey	153	148	151	144	118	119	155	162	155	154
Douglas	40	33	37	36	30	31	29	34	27	30
Edmunds	53	46	46	47	34	46	55	36	41	42
Fall River	55	63	61	49	55	46	55	54	71	62
Faulk	38	23	28	28	24	29	20	21	25	26
Grant	97	80	83	69	81	81	69	89	88	68
Gregory	62	45	44	42	50	43	40	47	37	44
Haakon	17	20	18	23	23	26	21	22	17	20
Hamlin	118	124	127	107	102	104	109	103	98	93
Hand	42	38	28	36	46	27	36	40	37	30
Hanson	49	56	51	44	55	44	48	42	61	47
Harding	20	17	14	9	15	10	17	12	11	9
Hughes	229	255	230	237	225	250	225	238	231	227
Hutchinson	102	107	86	72	81	80	85	60	74	88

Table 4 (continued)
South Dakota Resident Births by Resident County and Year of Birth, 2005-2014

County	Year of Birth									
	2014	2013	2012	2011	2010	2009	2008	2007	2006	2005
Hyde	14	19	9	15	12	12	7	9	13	15
Jackson	71	78	69	68	75	71	74	81	61	62
Jerauld	32	24	23	24	29	29	24	19	34	24
Jones	9	10	10	11	10	14	13	14	12	17
Kingsbury	66	61	54	71	51	63	77	54	55	52
Lake	122	140	128	133	128	130	103	144	137	123
Lawrence	245	230	240	213	252	257	257	290	290	239
Lincoln	766	753	852	781	808	825	763	785	746	687
Lyman	71	69	60	76	72	53	60	59	57	72
McCook	81	75	74	66	80	84	64	79	60	79
McPherson	30	24	25	24	18	18	14	18	28	16
Marshall	72	62	56	60	50	59	47	54	52	50
Meade	318	320	327	314	334	312	372	350	377	390
Mellette	35	37	27	27	38	35	36	50	46	40
Miner	22	28	20	24	19	28	30	27	28	31
Minnehaha	2,947	2,863	2,811	2,779	2,749	2,761	2,841	2,746	2,624	2,587
Moody	93	93	93	86	89	90	79	88	91	92
Oglala Lakota	312	352	350	344	370	344	367	396	419	372
Pennington	1,540	1,596	1,532	1,502	1,549	1,564	1,563	1,599	1,584	1,564
Perkins	35	40	30	29	32	28	40	24	31	34
Potter	24	20	25	27	24	21	24	33	12	27
Roberts	177	201	176	187	159	169	172	170	160	175
Sanborn	37	35	34	28	24	24	25	37	21	21
Spink	69	80	91	72	78	60	93	75	74	78
Stanley	39	35	36	43	41	39	36	37	45	39
Sully	15	17	13	18	18	19	12	23	24	21
Todd	279	250	288	313	242	274	298	275	283	257
Tripp	71	65	66	70	61	66	70	67	87	64
Turner	81	86	89	89	101	86	96	97	104	89
Union	140	150	178	169	179	181	159	191	186	173
Walworth	85	70	66	69	56	73	53	63	70	64
Yankton	281	253	275	246	258	261	254	283	267	242
Ziebach	35	31	48	38	54	56	37	38	38	49

Note: Failure of births to add to the total is due to county not stated.
Source: South Dakota Department of Health, Office of Health Statistics

Table 5
South Dakota Resident Deaths by Resident County and Year of Death, 2005-2014

	Year of Death									
	2014	2013	2012	2011	2010	2009	2008	2007	2006	2005
Total	7,500	7,079	7,283	7,271	7,087	6,913	7,056	6,800	7,038	7,074
County										
Aurora	28	32	29	29	26	31	30	31	27	35
Beadle	196	175	182	201	187	205	189	193	191	212
Bennett	32	29	30	31	37	30	25	39	23	25
Bon Homme	77	78	71	69	69	83	71	100	79	80
Brookings	202	183	230	182	165	203	213	183	191	149
Brown	393	399	378	355	396	336	350	357	354	333
Brule	53	50	69	56	47	54	43	52	64	59
Buffalo	17	16	18	18	16	24	20	18	17	15
Butte	102	93	110	123	100	92	102	110	95	106
Campbell	11	10	17	21	11	14	14	9	18	19
Charles Mix	95	83	82	98	99	122	91	92	96	117
Clark	45	50	40	62	56	52	42	34	46	68
Clay	100	101	101	89	105	90	67	83	91	82
Codington	264	224	229	239	237	238	242	253	230	234
Corson	37	52	43	44	40	52	36	38	44	38
Custer	85	77	88	82	82	73	62	88	76	82
Davison	241	179	213	205	190	157	207	203	187	168
Day	66	73	76	86	65	95	69	74	94	82
Deuel	37	39	38	43	36	42	62	51	66	49
Dewey	68	68	65	48	56	48	53	57	53	66
Douglas	47	38	39	58	50	41	44	42	33	52
Edmunds	39	44	55	50	45	50	47	47	57	52
Fall River	130	118	111	113	104	110	104	106	107	114
Faulk	28	34	27	23	28	20	34	30	38	19
Grant	86	106	66	72	66	89	80	83	94	95
Gregory	64	63	72	58	74	56	89	54	74	65
Haakon	23	35	26	27	22	15	23	26	32	25
Hamlin	61	68	76	78	60	73	71	80	76	79
Hand	41	55	38	41	43	28	42	36	44	37
Hanson	34	21	11	24	22	19	25	20	19	26
Harding	11	4	8	11	12	8	8	6	8	11
Hughes	137	135	124	147	136	164	143	130	158	152
Hutchinson	118	106	106	111	113	105	123	92	110	109

Table 5 (continued)
South Dakota Resident Deaths by Resident County and Year of Death, 2005-2014

County	Year of Death									
	2014	2013	2012	2011	2010	2009	2008	2007	2006	2005
Hyde	15	14	27	15	20	18	22	25	23	21
Jackson	34	34	34	35	35	29	30	37	39	26
Jerauld	28	18	38	32	27	28	27	25	30	27
Jones	9	9	10	16	5	7	6	14	6	9
Kingsbury	69	77	58	73	79	68	89	76	78	83
Lake	110	105	110	101	113	107	105	93	116	91
Lawrence	225	226	240	201	208	203	196	201	234	187
Lincoln	207	181	201	216	181	166	203	191	226	229
Lyman	32	24	42	46	28	34	21	25	28	29
McCook	83	73	80	68	74	83	71	76	71	70
McPherson	43	41	34	37	33	25	35	34	36	49
Marshall	49	47	56	59	73	65	46	46	53	60
Meade	200	190	180	165	157	178	220	214	223	236
Mellette	19	19	24	25	25	22	24	22	16	24
Miner	28	34	27	37	38	33	37	32	37	39
Minnehaha	1,277	1,256	1,232	1,301	1,273	1,228	1,233	1,151	1,150	1,146
Moody	58	53	53	49	57	54	46	56	69	66
Oglala Lakota	112	124	130	109	131	108	112	117	121	123
Pennington	832	743	796	795	758	699	716	616	645	693
Perkins	51	39	38	57	48	32	43	52	46	41
Potter	34	29	44	42	28	40	47	32	37	44
Roberts	126	104	141	103	113	105	125	101	94	128
Sanborn	33	35	32	34	18	21	17	21	29	38
Spink	67	84	84	73	72	89	77	85	75	79
Stanley	27	14	17	22	18	13	26	7	25	19
Sully	5	13	13	8	10	9	8	9	11	11
Todd	87	101	98	81	68	87	82	81	73	63
Tripp	73	67	72	66	81	79	66	68	81	85
Turner	124	92	95	105	90	92	97	105	104	109
Union	137	92	119	107	120	106	113	101	100	93
Walworth	92	79	79	77	76	60	71	58	86	92
Yankton	221	207	199	211	211	189	206	197	175	199
Ziebach	12	12	11	11	24	17	18	15	9	10

Note: Failure of deaths to add to the total is due to county not stated.
 Source: South Dakota Department of Health, Office of Health Statistics

Table 6
Marriages Occurring in South Dakota by County of Occurrence and Year of Marriage, 2005-2014

	Year of Marriage									
	2014	2013	2012	2011	2010	2009	2008	2007	2006	2005
Total	6,040	5,919	6,236	6,145	5,939	5,887	6,148	6,138	6,303	6,551
County										
Aurora	10	9	18	17	8	13	16	13	28	18
Beadle	143	135	148	147	138	128	137	129	117	118
Bennett	16	18	21	33	23	17	16	22	26	15
Bon Homme	36	35	54	47	51	30	54	40	42	44
Brookings	240	227	210	178	194	209	195	202	178	246
Brown	238	221	239	239	224	231	225	277	270	244
Brule	45	54	57	46	48	48	52	42	63	57
Buffalo	4	3	6	*	3	3	4	8	*	*
Butte	90	81	80	89	77	60	55	62	51	66
Campbell	8	6	8	6	7	9	7	6	*	15
Charles Mix	36	42	46	58	42	50	54	66	55	53
Clark	27	22	18	21	12	23	16	24	18	20
Clay	71	67	77	86	75	74	90	101	105	107
Codington	207	219	224	268	236	228	245	262	290	261
Corson	25	20	22	30	19	30	21	22	19	27
Custer	181	162	152	137	131	115	123	113	101	109
Davison	120	127	139	156	153	138	153	162	167	164
Day	34	31	40	29	26	36	40	33	35	41
Deuel	38	36	36	31	31	27	39	30	34	30
Dewey	15	15	18	15	7	17	21	21	12	16
Douglas	21	18	20	20	21	25	20	20	21	24
Edmunds	12	19	16	20	17	20	25	24	11	16
Fall River	68	63	60	62	52	51	75	68	68	85
Faulk	15	13	12	20	11	13	8	10	5	17
Grant	52	60	60	67	58	78	88	75	69	84
Gregory	26	19	16	36	30	24	23	23	34	32
Haakon	9	10	17	8	5	9	18	12	14	14
Hamlin	33	31	40	25	37	33	32	36	37	32
Hand	28	12	13	24	20	21	8	19	16	36
Hanson	17	15	6	12	15	14	8	12	21	16
Harding	7	3	9	5	11	8	*	3	10	*
Hughes	122	116	106	109	98	124	137	120	129	136
Hutchinson	39	29	39	33	34	34	31	36	37	40

Table 6 (continued)
Marriages Occurring in South Dakota by County of Occurrence and Year of Marriage, 2005-2014

County	Year of Marriage									
	2014	2013	2012	2011	2010	2009	2008	2007	2006	2005
Hyde	3	3	9	7	6	*	5	4	7	5
Jackson	15	14	11	14	18	9	8	9	12	11
Jerauld	10	15	7	10	10	10	10	12	8	12
Jones	*	6	3	6	5	6	6	*	7	4
Kingsbury	14	22	22	27	31	34	36	28	37	36
Lake	76	83	89	64	81	93	71	98	97	77
Lawrence	448	482	487	466	454	461	485	485	532	502
Lincoln	178	196	155	147	168	149	173	157	158	149
Lyman	17	19	14	16	21	15	17	29	23	26
McCook	31	21	36	24	24	23	31	37	34	38
McPherson	10	7	9	9	7	7	10	5	9	12
Marshall	23	31	33	20	33	27	31	19	33	25
Meade	238	264	204	216	218	208	188	219	227	272
Mellette	19	17	29	21	30	21	18	28	22	25
Miner	9	11	9	14	16	13	8	11	7	16
Minnehaha	1,494	1,367	1,492	1,398	1,321	1,333	1,324	1,254	1,336	1,363
Moody	26	40	46	43	37	43	49	36	61	55
Oglala Lakota	13	8	4	6	6	5	7	8	6	12
Pennington	774	768	863	893	891	850	932	894	883	977
Perkins	19	20	22	16	13	11	17	24	18	25
Potter	18	18	12	18	8	18	11	21	13	12
Roberts	77	85	116	100	104	104	113	92	124	107
Sanborn	10	8	13	7	8	6	9	8	10	13
Spink	29	20	22	33	24	24	22	35	34	26
Stanley	13	18	24	25	20	28	16	10	17	21
Sully	6	4	3	5	*	*	6	7	3	6
Todd	11	13	11	15	19	22	24	22	19	21
Tripp	33	28	36	25	34	31	35	40	35	42
Turner	55	51	34	38	44	36	37	37	38	47
Union	148	146	169	151	189	176	185	191	183	203
Walworth	37	30	32	50	26	16	30	30	34	27
Yankton	149	162	184	180	155	162	190	189	185	192
Ziebach	*	4	9	5	3	*	6	4	4	7

Note: *Department of Health policy prohibits publishing vital events in cells with less than three events at a county level.
Source: South Dakota Department of Health, Office of Health Statistics

Table 7
Divorces Occurring in South Dakota by County of Occurrence and Year of Divorce, 2005-2014

	Year of Divorce									
	2014	2013	2012	2011	2010	2009	2008	2007	2006	2005
Total	2,374	2,450	2,550	2,694	2,774	2,686	2,459	2,438	2,465	2,354
County										
Aurora	5	5	7	6	4	9	6	8	4	7
Beadle	67	52	57	70	78	61	57	59	55	39
Bennett	3	*	4	*	*	5	*	7	*	4
Bon Homme	16	9	15	10	14	18	17	19	19	17
Brookings	57	79	85	93	91	75	75	65	79	75
Brown	86	119	127	138	146	116	103	114	110	105
Brule	19	21	13	17	10	19	13	14	10	17
Buffalo	*	*	*	*	*	*	*	3	*	*
Butte	42	35	35	31	40	51	39	37	34	43
Campbell	*	4	5	*	5	*	*	*	4	*
Charles Mix	11	5	11	12	13	9	9	9	12	5
Clark	9	9	*	8	17	7	6	6	11	11
Clay	40	39	50	36	35	44	34	34	31	40
Codington	92	103	79	96	125	93	109	102	91	96
Corson	*	3	3	*	5	*	*	*	*	3
Custer	21	20	13	32	31	33	23	28	25	32
Davison	58	49	63	68	68	56	69	70	72	60
Day	11	8	11	10	12	16	11	7	19	12
Deuel	13	15	12	13	12	9	13	10	12	11
Dewey	*	4	3	6	4	*	*	*	*	*
Douglas	5	*	9	5	5	6	6	7	3	4
Edmunds	10	8	12	12	8	13	5	8	11	10
Fall River	23	35	36	20	30	25	39	17	33	27
Faulk	5	*	5	3	3	6	3	*	*	*
Grant	17	20	19	22	10	18	16	18	28	11
Gregory	8	10	6	6	5	6	5	8	13	13
Haakon	*	5	6	3	6	7	*	5	*	7
Hamlin	3	12	8	14	14	10	5	9	10	15
Hand	5	10	4	10	8	12	9	7	5	5
Hanson	*	4	*	5	*	4	5	8	3	3
Harding	*	4	3	4	*	*	5	*	*	*
Hughes	43	62	58	64	61	62	42	66	75	60
Hutchinson	18	10	9	16	15	10	12	*	3	16

Table 7 (continued)
Divorces Occurring in South Dakota by County of Occurrence and Year of Divorce, 2005-2014

County	Year of Divorce									
	2014	2013	2012	2011	2010	2009	2008	2007	2006	2005
Hyde	4	4	5	3	3	*	*	*	4	*
Jackson	3	*	5	3	3	6	5	*	9	*
Jerauld	3	8	10	14	6	5	*	*	3	*
Jones	5	5	*	5	*	5	*	3	*	*
Kingsbury	7	12	17	10	16	17	8	6	16	18
Lake	21	32	28	22	36	28	28	22	26	28
Lawrence	90	80	94	109	95	82	68	77	90	83
Lincoln	147	143	142	156	128	115	139	117	111	79
Lyman	3	4	6	4	4	10	7	3	9	*
McCook	21	11	17	7	15	16	15	19	13	15
McPherson	5	*	5	6	10	4	5	5	6	4
Marshall	10	11	11	10	13	8	8	8	11	10
Meade	65	83	90	107	83	128	93	102	78	120
Mellette	*	*	3	*	4	*	*	*	*	3
Miner	8	6	5	3	7	7	6	6	9	6
Minnehaha	610	593	591	662	693	619	637	640	596	549
Moody	13	10	16	16	14	16	17	14	15	12
Oglala Lakota	*	*	*	*	*	3	*	4	*	*
Pennington	452	442	481	478	515	548	463	431	436	400
Perkins	*	3	7	*	*	*	*	*	6	3
Potter	5	3	7	*	4	7	8	7	3	9
Roberts	11	18	20	19	18	11	18	17	21	26
Sanborn	5	6	12	7	9	8	5	4	7	4
Spink	23	17	16	17	15	23	11	8	16	19
Stanley	*	5	10	7	14	9	4	8	11	4
Sully	3	*	*	5	5	5	*	5	3	7
Todd	*	*	*	*	3	3	*	3	6	6
Tripp	11	7	20	10	9	18	7	12	17	11
Turner	17	31	27	36	21	28	24	19	19	31
Union	51	61	46	46	46	53	53	55	46	55
Walworth	10	14	9	15	14	21	12	7	17	19
Yankton	65	69	71	73	89	72	65	80	75	74
Ziebach	*	*	*	*	*	*	*	*	*	3

Note: *Department of Health policy prohibits publishing vital events in cells with less than three events at a county level.
Source: South Dakota Department of Health, Office of Health Statistics

