

Hypertension

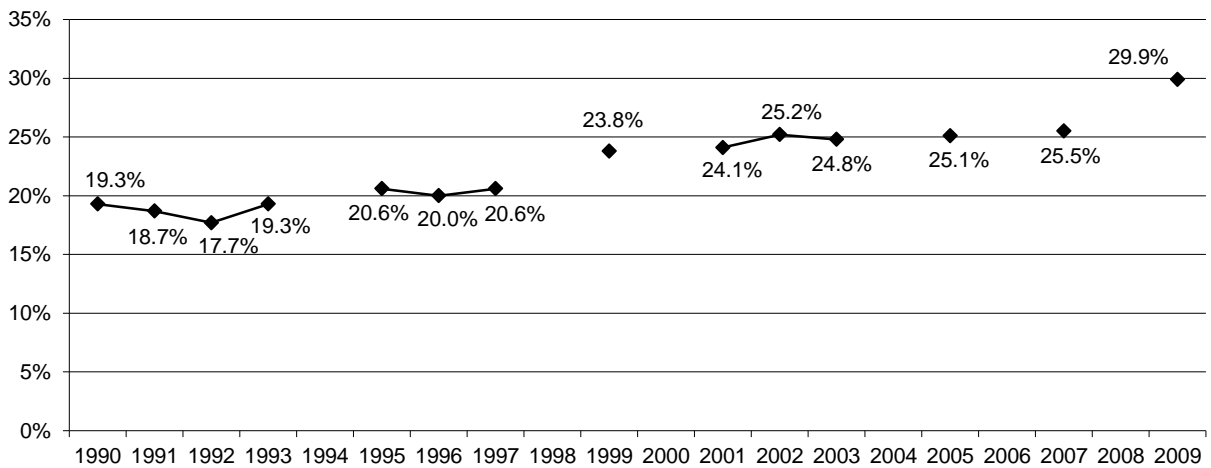
HYPERTENSION

Definition: Respondents who report they have been told by a health professional their blood pressure is high.

Prevalence of Hypertension

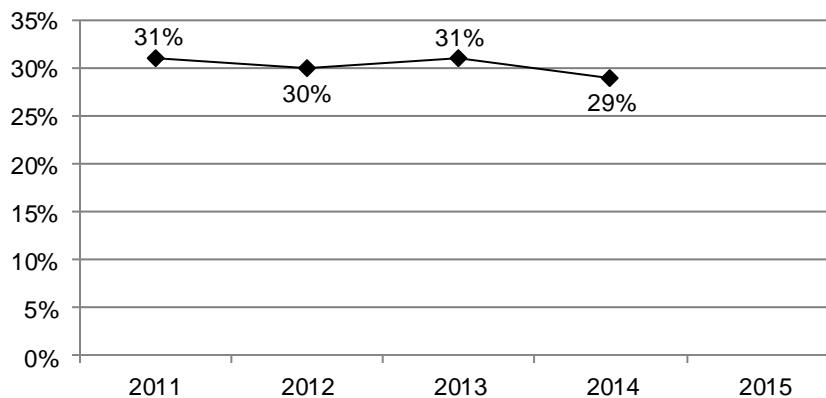
- South Dakota 29%

Figure 31
Percent of Respondents Who Were Told They Have Hypertension, 1990-1993, 1995-1997, 1999, 2001-2003, 2005, 2007, and 2009



Source: The Behavioral Risk Factor Surveillance System, South Dakota Department of Health, 1990-1993, 1995-1997, 1999, 2001-2003, 2005, 2007, and 2009

Figure 32
Percent of Respondents Who Were Told They Have Hypertension, 2011-2014



Note: Beginning in 2011, the CDC began using a different methodology to weight the data, therefore current data estimates cannot be compared to previous years.

Source: The Behavioral Risk Factor Surveillance System, South Dakota Department of Health, 2011-2014

Table 14
Respondents Who Were Told They Have Hypertension, 2011-2014

		2011-2014	2011	2012	2013	2014
Total		30%	31%	30%	31%	29%
Gender	Male	32%	33%	32%	32%	30%
	Female	29%	29%	28%	29%	27%
Age	18-24	6%	*	*	*	*
	25-34	12%	*	*	*	*
	35-44	18%	*	*	*	*
	45-54	29%	*	*	*	*
	55-64	44%	47%	42%	*	*
	65-74	57%	*	*	*	*
	75+	62%	*	*	*	*
Race	White	31%	31%	31%	31%	29%
	American Indian	32%	*	*	*	*
Ethnicity	Hispanic	21%	*	*	*	*
	Non-Hispanic	30%	31%	31%	31%	29%
Household Income	Less than \$25,000	35%	36%	35%	35%	*
	\$25,000-\$49,999	33%	35%	33%	32%	32%
	\$50,000+	26%	26%	25%	27%	25%
Education	Less than High School, G.E.D.	38%	*	*	*	*
	High School, G.E.D.	33%	33%	33%	33%	34%
	Some Post-High School	29%	29%	29%	29%	27%
	College Graduate	25%	26%	25%	25%	23%
Employment Status	Employed for Wages	23%	23%	23%	23%	21%
	Self-employed	29%	*	*	*	*
	Unemployed	24%	*	*	*	*
	Homemaker	25%	*	*	*	*
	Student	7%	*	*	*	*
	Retired	58%	58%	58%	59%	58%
	Unable to Work	50%	*	*	*	*
Marital Status	Married/Unmarried Couple	31%	32%	31%	32%	29%
	Divorced/Separated	34%	*	*	*	*
	Widowed	58%	*	*	*	*
	Never Married	16%	*	*	*	*
Home Ownership Status	Own Home	33%	33%	33%	34%	31%
	Rent Home	25%	28%	25%	24%	*
Children Status	Children in Household (Ages 18-44)	12%	13%	*	*	*
	No Children in Household (Ages 18-44)	13%	*	*	*	*
Phone Status	Landline	36%	34%	37%	39%	35%
	Cell Phone	21%	*	19%	22%	23%
Pregnancy Status	Pregnant (Ages 18-44)	3%	*	*	*	*
	Not Pregnant (Ages 18-44)	8%	*	*	*	*
County	Minnehaha	28%	*	*	*	*
	Pennington	29%	*	*	*	*
	Lincoln	24%	*	*	*	*
	Brown	31%	*	*	*	*
	Brookings	21%	*	*	*	*
	Codington	28%	*	*	*	*
	Meade	29%	*	*	*	*
Lawrence	29%	*	*	*	*	

Note: *Results based on small sample sizes have been suppressed.

Source: The Behavioral Risk Factor Surveillance System, South Dakota Department of Health, 2011-2014