

# Cardiovascular Disease

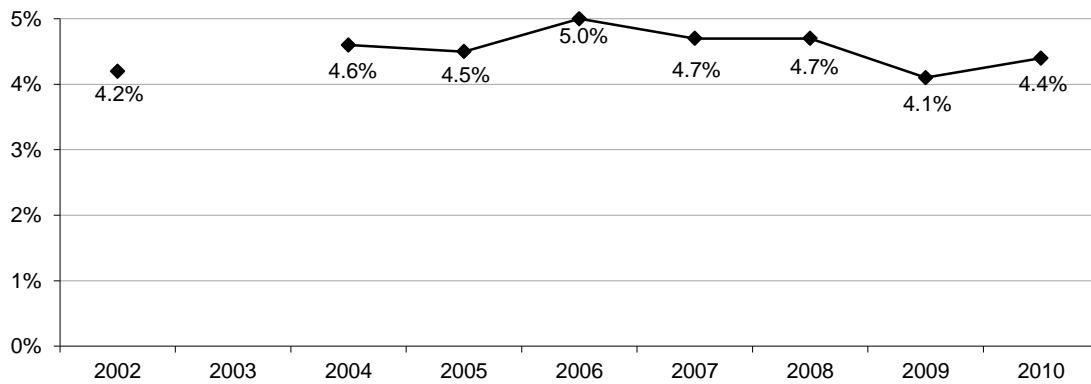
## PREVIOUSLY HAD A HEART ATTACK

**Definition:** Respondents who answered “yes” to the question: “Has a doctor, nurse, or other health professional ever told you that you had a heart attack, also called a myocardial infarction?”

### Prevalence of previously had a heart attack

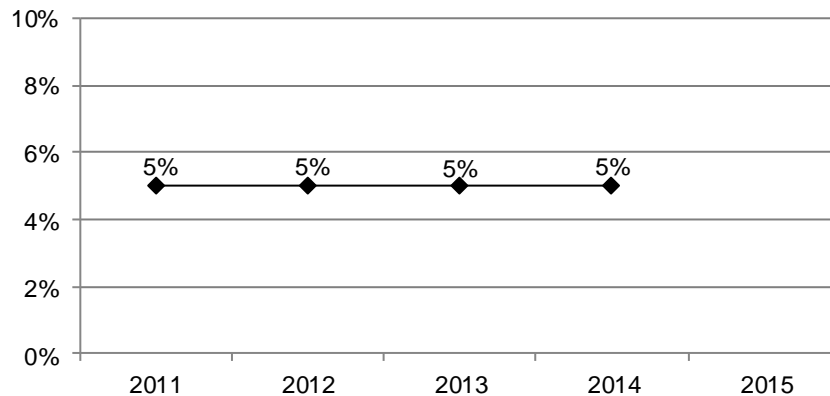
- South Dakota 5%

**Figure 67**  
**Percent of Respondents Who Previously Had a Heart Attack, 2002, and 2004-2010**



Source: The Behavioral Risk Factor Surveillance System, South Dakota Department of Health, 2002, and 2004-2010

**Figure 68**  
**Percent of Respondents Who Previously Had a Heart Attack, 2011-2014**



Note: Beginning in 2011, the CDC began using a different methodology to weight the data, therefore current data estimates cannot be compared to previous years.

Source: The Behavioral Risk Factor Surveillance System, South Dakota Department of Health, 2011-2014

**Table 34**  
**Respondents Who Previously Had a Heart Attack, 2011-2014**

		2011-2014	2011	2012	2013	2014
<b>Total</b>		<b>5%</b>	<b>5%</b>	<b>5%</b>	<b>5%</b>	<b>5%</b>
<b>Gender</b>	Male	7%	7%	7%	7%	7%
	Female	3%	3%	2%	3%	3%
<b>Age</b>	18-24	1%	*	*	*	*
	25-34	1%	*	*	*	*
	35-44	1%	*	*	*	*
	45-54	3%	*	*	*	*
	55-64	6%	8%	6%	*	5%
	65-74	13%	*	*	*	*
	75+	18%	*	*	*	*
<b>Race</b>	White	5%	5%	5%	5%	5%
	American Indian	6%	*	*	*	*
<b>Ethnicity</b>	Hispanic	4%	*	*	*	*
	Non-Hispanic	5%	5%	5%	5%	5%
<b>Household Income</b>	Less than \$25,000	8%	8%	7%	*	8%
	\$25,000-\$49,999	5%	5%	5%	5%	5%
	\$50,000+	3%	3%	2%	3%	3%
<b>Education</b>	Less than High School, G.E.D.	10%	*	*	*	*
	High School, G.E.D.	6%	7%	5%	6%	7%
	Some Post-High School	3%	3%	4%	4%	3%
	College Graduate	3%	3%	3%	4%	3%
<b>Employment Status</b>	Employed for Wages	2%	2%	2%	2%	2%
	Self-employed	4%	*	*	*	*
	Unemployed	4%	*	*	*	*
	Homemaker	2%	*	*	*	*
	Student	0.3%	*	*	*	*
	Retired	14%	16%	12%	14%	14%
	Unable to Work	15%	*	*	*	*
<b>Marital Status</b>	Married/Unmarried Couple	5%	5%	4%	5%	5%
	Divorced/Separated	6%	*	*	*	*
	Widowed	14%	*	*	*	*
	Never Married	2%	*	*	*	*
<b>Home Ownership Status</b>	Own Home	5%	5%	5%	6%	5%
	Rent Home	4%	5%	4%	4%	5%
<b>Children Status</b>	Children in Household (Ages 18-44)	1%	1%	1%	*	*
	No Children in Household (Ages 18-44)	1%	*	*	*	*
<b>Phone Status</b>	Landline	6%	6%	6%	7%	6%
	Cell Phone	3%	*	3%	3%	4%
<b>Pregnancy Status</b>	Pregnant (Ages 18-44)	0%	*	*	*	*
	Not Pregnant (Ages 18-44)	1%	*	*	*	*
<b>County</b>	Minnehaha	5%	*	*	*	*
	Pennington	5%	*	*	*	*
	Lincoln	3%	*	*	*	*
	Brown	6%	*	*	*	*
	Brookings	3%	*	*	*	*
	Codington	7%	*	*	*	*
	Meade	4%	*	*	*	*
	Lawrence	5%	*	*	*	*

Note: \*Results based on small sample sizes have been suppressed.

Source: The Behavioral Risk Factor Surveillance System, South Dakota Department of Health, 2011-2014

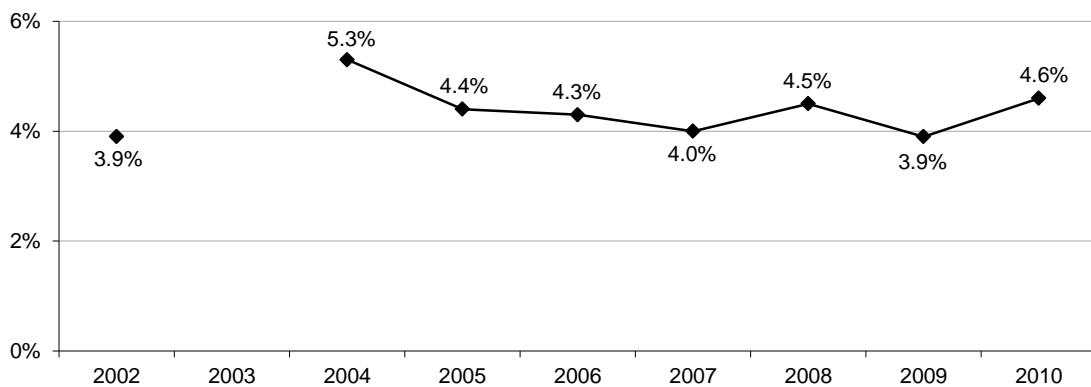
## ANGINA OR CORONARY HEART DISEASE

**Definition:** Respondents who answered “yes” to the question: “Has a doctor, nurse, or other health professional ever told you that you have angina or coronary heart disease?”

### Prevalence of angina or coronary heart disease

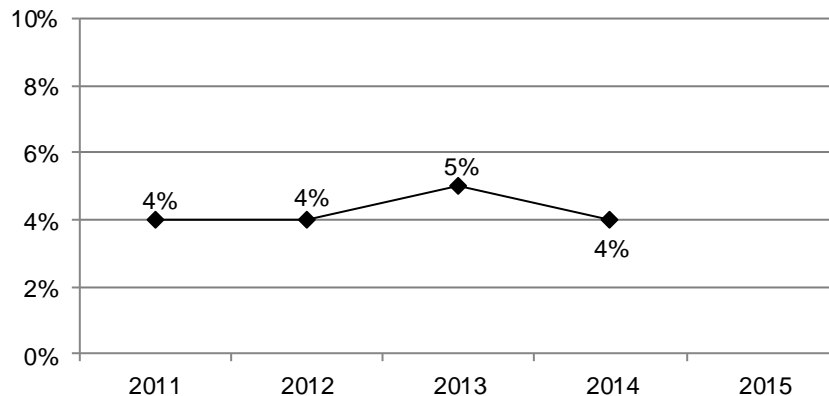
- South Dakota 4%

**Figure 69**  
**Percent of Respondents Who Have Angina or Coronary Heart Disease, 2002, and 2004-2010**



Source: The Behavioral Risk Factor Surveillance System, South Dakota Department of Health, 2002, and 2004-2010

**Figure 70**  
**Percent of Respondents Who Have Angina or Coronary Heart Disease, 2011-2014**



Note: Beginning in 2011, the CDC began using a different methodology to weight the data, therefore current data estimates cannot be compared to previous years.

Source: The Behavioral Risk Factor Surveillance System, South Dakota Department of Health, 2011-2014

**Table 35**  
**Respondents Who Have Angina or Coronary Artery Disease, 2011-2014**

		2011-2014	2011	2012	2013	2014
<b>Total</b>		<b>4%</b>	<b>4%</b>	<b>4%</b>	<b>5%</b>	<b>4%</b>
<b>Gender</b>	Male	5%	5%	5%	6%	5%
	Female	3%	3%	3%	4%	3%
<b>Age</b>	18-24	0.1%	*	*	*	*
	25-34	0.3%	*	*	*	*
	35-44	1%	*	*	*	*
	45-54	2%	*	*	*	*
	55-64	6%	8%	6%	*	5%
	65-74	12%	*	*	*	*
	75+	15%	*	*	*	*
<b>Race</b>	White	4%	4%	4%	5%	4%
	American Indian	4%	*	*	*	*
<b>Ethnicity</b>	Hispanic	3%	*	*	*	*
	Non-Hispanic	4%	4%	4%	5%	4%
<b>Household Income</b>	Less than \$25,000	6%	6%	6%	*	6%
	\$25,000-\$49,999	5%	5%	5%	5%	4%
	\$50,000+	3%	3%	2%	3%	4%
<b>Education</b>	Less than High School, G.E.D.	6%	*	*	*	*
	High School, G.E.D.	5%	6%	5%	4%	5%
	Some Post-High School	4%	3%	3%	5%	3%
	College Graduate	3%	3%	4%	2%	3%
<b>Employment Status</b>	Employed for Wages	2%	2%	2%	2%	1%
	Self-employed	3%	*	*	*	*
	Unemployed	2%	*	*	*	*
	Homemaker	1%	*	*	*	*
	Student	0.2%	*	*	*	*
	Retired	13%	12%	12%	13%	16%
	Unable to Work	12%	*	*	*	*
<b>Marital Status</b>	Married/Unmarried Couple	4%	4%	4%	5%	5%
	Divorced/Separated	5%	*	*	*	*
	Widowed	12%	*	*	*	*
	Never Married	1%	*	*	*	*
<b>Home Ownership Status</b>	Own Home	5%	4%	4%	5%	5%
	Rent Home	4%	4%	3%	4%	4%
<b>Children Status</b>	Children in Household (Ages 18-44)	1%	1%	1%	*	*
	No Children in Household (Ages 18-44)	1%	*	*	*	*
<b>Phone Status</b>	Landline	5%	5%	5%	6%	6%
	Cell Phone	3%	*	2%	3%	3%
<b>Pregnancy Status</b>	Pregnant (Ages 18-44)	0%	*	*	*	*
	Not Pregnant (Ages 18-44)	1%	*	*	*	*
<b>County</b>	Minnehaha	3%	*	*	*	*
	Pennington	5%	*	*	*	*
	Lincoln	3%	*	*	*	*
	Brown	6%	*	*	*	*
	Brookings	3%	*	*	*	*
	Codington	6%	*	*	*	*
	Meade	3%	*	*	*	*
	Lawrence	4%	*	*	*	*

Note: \*Results based on small sample sizes have been suppressed.

Source: The Behavioral Risk Factor Surveillance System, South Dakota Department of Health, 2011-2014

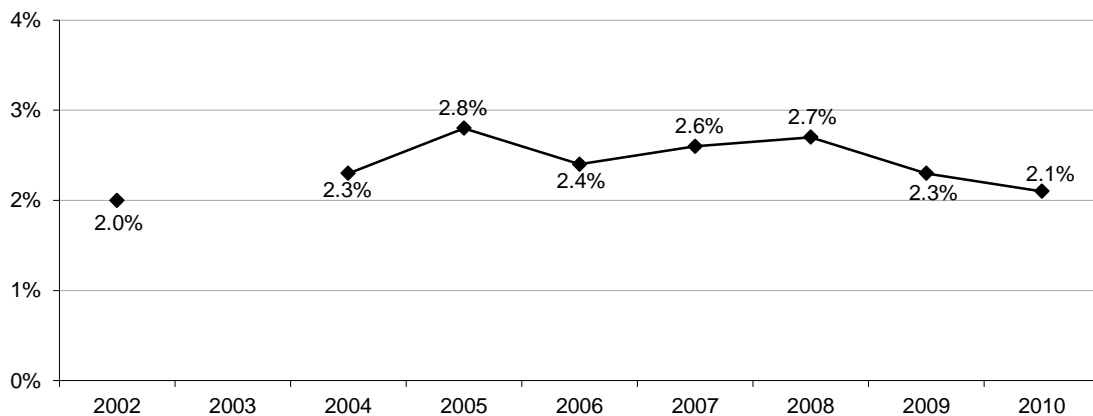
## PREVIOUSLY HAD A STROKE

**Definition:** Respondents who answered “yes” to the question: “Has a doctor, nurse, or other health professional ever told you that you had a stroke?”

### Prevalence of previously had a stroke

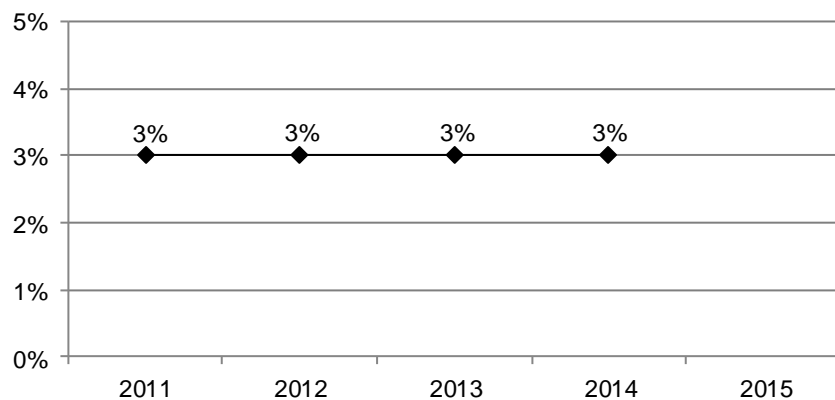
- South Dakota 3%

**Figure 71**  
**Percent of Respondents Who Have Previously Had a Stroke, 2002, and 2004-2010**



Source: The Behavioral Risk Factor Surveillance System, South Dakota Department of Health, 2002, and 2004-2010

**Figure 72**  
**Percent of Respondents Who Have Previously Had a Stroke, 2011-2014**



Note: Beginning in 2011, the CDC began using a different methodology to weight the data, therefore current data estimates cannot be compared to previous years.

Source: The Behavioral Risk Factor Surveillance System, South Dakota Department of Health, 2011-2014

**Table 36**  
**Respondents Who Previously Had a Stroke, 2011-2014**

		2011-2014	2011	2012	2013	2014
<b>Total</b>		<b>3%</b>	<b>3%</b>	<b>3%</b>	<b>3%</b>	<b>3%</b>
<b>Gender</b>	Male	3%	2%	2%	3%	3%
	Female	3%	3%	3%	3%	3%
<b>Age</b>	18-24	0.5%	*	*	*	*
	25-34	1%	*	*	*	*
	35-44	2%	*	*	*	*
	45-54	2%	*	*	*	*
	55-64	3%	3%	3%	*	3%
	65-74	6%	*	*	*	*
	75+	10%	*	*	*	*
<b>Race</b>	White	3%	3%	3%	3%	3%
	American Indian	3%	*	*	*	*
<b>Ethnicity</b>	Hispanic	3%	*	*	*	*
	Non-Hispanic	3%	3%	3%	3%	3%
<b>Household Income</b>	Less than \$25,000	6%	6%	6%	*	5%
	\$25,000-\$49,999	2%	2%	2%	3%	3%
	\$50,000+	1%	1%	1%	1%	2%
<b>Education</b>	Less than High School, G.E.D.	5%	*	*	*	*
	High School, G.E.D.	3%	2%	2%	3%	4%
	Some Post-High School	2%	3%	3%	2%	2%
	College Graduate	1%	1%	1%	2%	1%
<b>Employment Status</b>	Employed for Wages	1%	1%	1%	1%	1%
	Self-employed	1%	*	*	*	*
	Unemployed	1%	*	*	*	*
	Homemaker	3%	*	*	*	*
	Student	0.2%	*	*	*	*
	Retired	8%	7%	7%	8%	9%
<b>Marital Status</b>	Unable to Work	12%	*	*	*	*
	Married/Unmarried Couple	2%	2%	2%	2%	3%
	Divorced/Separated	5%	*	*	*	*
	Widowed	9%	*	*	*	*
<b>Home Ownership Status</b>	Never Married	1%	*	*	*	*
	Own Home	3%	2%	2%	3%	3%
<b>Children Status</b>	Rent Home	3%	5%	5%	4%	3%
	Children in Household (Ages 18-44)	1%	1%	1%	*	*
<b>Phone Status</b>	No Children in Household (Ages 18-44)	1%	*	*	*	*
	Landline	3%	3%	3%	4%	4%
<b>Pregnancy Status</b>	Cell Phone	2%	*	*	2%	2%
	Pregnant (Ages 18-44)	0%	*	*	*	*
<b>County</b>	Not Pregnant (Ages 18-44)	1%	*	*	*	*
	Minnehaha	3%	*	*	*	*
	Pennington	3%	*	*	*	*
	Lincoln	2%	*	*	*	*
	Brown	3%	*	*	*	*
	Brookings	2%	*	*	*	*
	Codington	3%	*	*	*	*
	Meade	3%	*	*	*	*
Lawrence	3%	*	*	*	*	

Note: \*Results based on small sample sizes have been suppressed.

Source: The Behavioral Risk Factor Surveillance System, South Dakota Department of Health, 2011-2014