

# Overview

<b><u>Resident Live Births</u></b>	
Number of Live Births	12,092
Rate per 1,000 Population	14.5
<b><u>Infant Deaths</u></b>	
Number of Infant Deaths	104
Rate per 1,000 Live Births	8.60
<b><u>Resident Deaths</u></b>	
Number of Resident Deaths	7,283
Rate per 100,000 Population	873.9
<b><u>Fetal Deaths</u></b>	
Number of Fetal Deaths	73
Rate per 1,000 Live Births + Fetal Deaths	6.00
<b><u>Marriages</u></b>	
Number of Marriages	6,236
Rate per 1,000 Population	7.5
<b><u>Divorces</u></b>	
Number of Divorces	2,550
Rate per 1,000 Population	3.1

This report contains selected health statistics that are widely used by the Department of Health, other government agencies, and the public. This information has proven to be useful in determining trends in health status, for planning health care services and for making decisions about public health programs. It also fulfills diverse requirements in the business community and academic research.

Vital statistics data are compiled and maintained under the direction of the Director of the Health Statistics Office (HSO). The data are analyzed by staff from the HSO. Data from HSO can be found in the following sections: Natality, Infant Mortality, Mortality, Induced Abortion, Marriage and Divorce, Health Status Profiles, and Health Status Maps. When referring to Divorce throughout this report, please note that Annulments are included in the Divorce category.

Infectious disease data are collected, compiled, and analyzed within the Office of Disease Prevention. Data on communicable diseases can be found in the Infectious Disease section of the report.

## Quick References

## Pages

• Tables 2, & 4-7 – Number of Vital Events by County	6-7 and 10-17
• Figure 6 – Graph Comparing State and National Rates	40
• Tables 8, 32, 43, & 66 – Tables Comparing State and National Rates	21, 39, 55, 98
• Tables 78 & 79 – Disease Data by Region and Characteristics	108 – 110
• Maps 1 through 23 – Health Status Maps by County	201 - 223

**The contacts listed in the Preface welcome suggestions for additional changes that would make the next compilation even more useful to those involved in improving the health of South Dakotans.**

**Table 1**  
**Selected South Dakota Health Statistics, 2011-2012**

EVENT		2012	2011	Percent Change
<b>BIRTHS:</b>	<b>Number</b>	12,092	11,834	+2.2
	Rate per 1,000 Population	14.5	14.4	+0.7
<b>Birth by Race</b>				
	<b>Number of White Births</b>	9,111	8,921	+2.1
	White Birth Rate per 1,000	12.7	12.5	+1.6
	<b>Number of American Indian Births</b>	1,936	1,953	-0.9
	American Indian Birth Rate per 1,000	26.1	26.6	-1.9
<b>Births (12 through 14 years olds)</b>				
	<b>Number</b>	8	11	-27.3
	Rate per 1,000 12 through 14 year olds	0.2	0.3	-33.3
<b>Births (15 through 17 year olds)</b>				
	<b>Number</b>	264	245	+7.8
	Rate per 1,000 15 through 17 year olds	8.0	7.4	+8.1
<b>Births (15 through 19 year olds)</b>				
	<b>Number</b>	929	963	-3.5
	Rate per 1,000 15 through 19 year olds	16.2	16.6	-2.4
<b>Low Birth Weight Babies (Less than 2,500 grams)</b>				
	<b>Number</b>	751	746	+0.7
	Rate per 1,000 Births	62.1	63.0	-1.4
<b>DEATHS:</b>	<b>Number</b>	7,283	7,271	+0.2
	Rate per 100,000 Population	873.9	882.3	-1.0
<b>Deaths by Race</b>				
	<b>Number of White Deaths</b>	6,590	6,662	-1.1
	White Death Rate per 100,000	917.4	933.5	-1.7
	<b>Number of American Indian Deaths</b>	585	527	+11.0
	American Indian Death Rate per 100,000	788.2	719.1	+9.6
<b>Deaths (12 through 14 years of age)</b>				
	<b>Number</b>	8	8	0.0
	Rate per 100,000 12 through 14 year olds	24.6	24.8	-0.8
<b>Deaths (15 through 17 years of age)</b>				
	<b>Number</b>	21	20	+5.0
	Rate per 100,000 15 through 17 year olds	63.6	60.5	+5.1
<b>Deaths (15 through 19 year of age)</b>				
	<b>Number</b>	38	34	+11.8
	Rate per 100,000 15 through 19 year olds	66.2	58.7	+12.8

**Table 1 (continued)**  
**Selected South Dakota Health Statistics, 2011-2012**

EVENT	2012	2011	Percent Change
<b>INFANT MORTALITY:</b>			
<b>Number</b>	104	75	+38.7
Rate per 1,000 Births	8.60	6.34	+35.6
<b>FETAL DEATHS:</b>			
<b>Number</b>	73	71	+2.8
Rate per 1,000 Births + Fetal Deaths	6.00	5.96	+0.7
<b>MARRIAGES: Number</b>			
Rate per 1,000 Population	6,236	6,145	+1.5
	7.5	7.5	0.0
<b>DIVORCES: Number</b>			
Rate per 1,000 Population	2,550	2,694	-5.3
	3.1	3.3	-6.1

Note: Birth and death data are for South Dakota residents.  
Marriage and divorce data reflect events occurring in South Dakota.  
Source: South Dakota Department of Health, Office of Health Statistics

**Table 2**  
**South Dakota Vital Statistics by County, 2012**

	Births		Deaths		Infant Deaths		Fetal Deaths		Marriages		Divorces	
	Number	Rate	Number	Rate	Number	Rate	Number	Rate	Number	Rate	Number	Rate
South Dakota	12,092	14.5	7,283	873.9	104	8.60	73	6.00	6,236	7.5	2,550	3.1
County												
Aurora	30	10.9	29	1,057.6	*	*	*	*	18	6.6	7	2.6
Beadle	327	18.4	182	1,025.2	9	27.52	*	*	148	8.3	57	3.2
Bennett	69	20.1	30	873.1	*	*	*	*	21	6.1	4	1.2
Bon Homme	77	11.0	71	1,010.1	*	*	*	*	54	7.7	15	2.1
Brookings	404	12.4	230	704.9	6	14.85	*	*	210	6.4	85	2.6
Brown	476	12.8	378	1,012.6	3	6.30	4	8.33	239	6.4	127	3.4
Brule	84	15.9	69	1,303.6	*	*	*	*	57	10.8	13	2.5
Buffalo	47	23.3	18	891.1	*	*	*	*	6	3.0	*	*
Butte	120	11.7	110	1,075.5	*	*	*	*	80	7.8	35	3.4
Campbell	9	6.4	17	1,217.8	*	*	*	*	8	5.7	5	3.6
Charles Mix	161	17.5	82	889.8	*	*	*	*	46	5.0	11	1.2
Clark	43	12.0	40	1,115.8	*	*	*	*	18	5.0	*	*
Clay	151	10.7	101	714.7	3	19.87	*	*	77	5.4	50	3.5
Codington	376	13.6	229	829.5	3	7.98	*	*	224	8.1	79	2.9
Corson	87	21.3	43	1,054.7	3	34.48	*	*	22	5.4	3	0.7
Custer	66	7.9	88	1,055.3	*	*	*	*	152	18.2	13	1.6
Davison	264	13.4	213	1,077.4	*	*	*	*	139	7.0	63	3.2
Day	76	13.5	76	1,354.0	*	*	*	*	40	7.1	11	2.0
Deuel	46	10.5	38	867.6	*	*	*	*	36	8.2	12	2.7
Dewey	151	27.3	65	1,173.7	*	*	3	19.48	18	3.3	3	0.5
Douglas	37	12.5	39	1,313.1	*	*	*	*	20	6.7	9	3.0
Edmunds	46	11.4	55	1,366.1	*	*	*	*	16	4.0	12	3.0
Fall River	61	8.8	111	1,592.3	*	*	*	*	60	8.6	36	5.2
Faulk	28	11.8	27	1,135.9	*	*	*	*	12	5.0	5	2.1
Grant	83	11.4	66	909.2	*	*	*	*	60	8.3	19	2.6
Gregory	44	10.3	72	1,688.2	*	*	3	63.83	16	3.8	6	1.4
Haakon	18	9.3	26	1,340.9	*	*	*	*	17	8.8	6	3.1
Hamlin	127	21.5	76	1,284.2	*	*	*	*	40	6.8	8	1.4
Hand	28	8.3	38	1,121.6	*	*	*	*	13	3.8	4	1.2
Hanson	51	15.1	11	325.7	*	*	*	*	6	1.8	*	*
Harding	14	10.6	8	607.9	*	*	*	*	9	6.8	3	2.3
Hughes	230	13.2	124	710.6	3	13.04	*	*	106	6.1	58	3.3
Hutchinson	86	12.0	106	1,474.9	*	*	*	*	39	5.4	9	1.3

**Table 2 (continued)  
South Dakota Vital Statistics by County, 2012**

County	Births		Deaths		Infant Deaths		Fetal Deaths		Marriages		Divorces	
	Number	Rate	Number	Rate	Number	Rate	Number	Rate	Number	Rate	Number	Rate
Hyde	9	6.3	27	1,878.91	*	*	*	*	9	6.3	5	3.5
Jackson	69	21.6	34	1,065.50	*	*	*	*	11	3.4	5	1.6
Jerauld	23	11.2	38	1,856.38	*	*	*	*	7	3.4	10	4.9
Jones	10	9.9	10	987.17	*	*	*	*	3	3.0	*	*
Kingsbury	54	10.3	58	1,111.11	*	*	*	*	22	4.2	17	3.3
Lake	128	10.9	110	934.50	*	*	*	*	89	7.6	28	2.4
Lawrence	240	9.8	240	983.73	3	12.50	*	*	487	20.0	94	3.9
Lincoln	852	17.6	201	416.18	8	9.39	5	5.83	155	3.2	142	2.9
Lyman	60	15.8	42	1,108.47	*	*	*	*	14	3.7	6	1.6
McCook	74	13.2	80	1,426.02	*	*	*	*	36	6.4	17	3.0
McPherson	25	10.3	34	1,394.01	*	*	*	*	9	3.7	5	2.1
Marshall	56	12.0	56	1,198.89	*	*	*	*	33	7.1	11	2.4
Meade	327	12.6	180	690.93	*	*	*	*	204	7.8	90	3.5
Mellette	27	12.9	24	1,142.31	*	*	*	*	29	13.8	3	1.4
Miner	20	8.6	27	1,160.79	*	*	*	*	9	3.9	5	2.1
Minnehaha	2,811	16.1	1,232	703.85	13	4.62	21	7.42	1,492	8.5	591	3.4
Moody	93	14.4	53	822.22	*	*	*	*	46	7.1	16	2.5
Pennington	1,532	14.7	796	762.84	10	6.53	10	6.49	863	8.3	481	4.6
Perkins	30	9.9	38	1,251.23	*	*	*	*	22	7.2	7	2.3
Potter	25	10.6	44	1,865.20	*	*	*	*	12	5.1	7	3.0
Roberts	176	17.1	141	1,368.53	*	*	*	*	116	11.3	20	1.9
Sanborn	34	14.6	32	1,376.94	*	*	*	*	13	5.6	12	5.2
Shannon	350	24.9	130	924.67	10	28.57	*	*	4	0.3	*	*
Spink	91	13.8	84	1,270.61	*	*	*	*	22	3.3	16	2.4
Stanley	36	12.1	17	572.58	*	*	*	*	24	8.1	10	3.4
Sully	13	9.1	13	911.00	*	*	*	*	3	2.1	*	*
Todd	288	29.0	98	985.72	3	10.42	3	10.31	11	1.1	*	*
Tripp	66	12.0	72	1,312.67	*	*	*	*	36	6.6	20	3.6
Turner	89	10.7	95	1,143.48	*	*	*	*	34	4.1	27	3.2
Union	178	12.0	119	801.08	*	*	*	*	169	11.4	46	3.1
Walworth	66	12.1	79	1,447.15	*	*	*	*	32	5.9	9	1.6
Yankton	275	12.2	199	880.41	*	*	*	*	184	8.1	71	3.1
Ziebach	48	16.7	11	383.41	*	*	*	*	9	3.1	*	*

Note: Births, deaths, infant deaths, and fetal deaths are by county of residence; marriages and divorces are by county of occurrence.  
 Birth, marriage, and divorce rates are per 1,000 population. Death rates are per 100,000 population. Infant mortality rates are per 1,000 live births.  
 Fetal mortality rates are per 1,000 live births plus fetal deaths.  
 \*Department of Health policy prohibits publishing vital events in cells with less than three events at a county level.

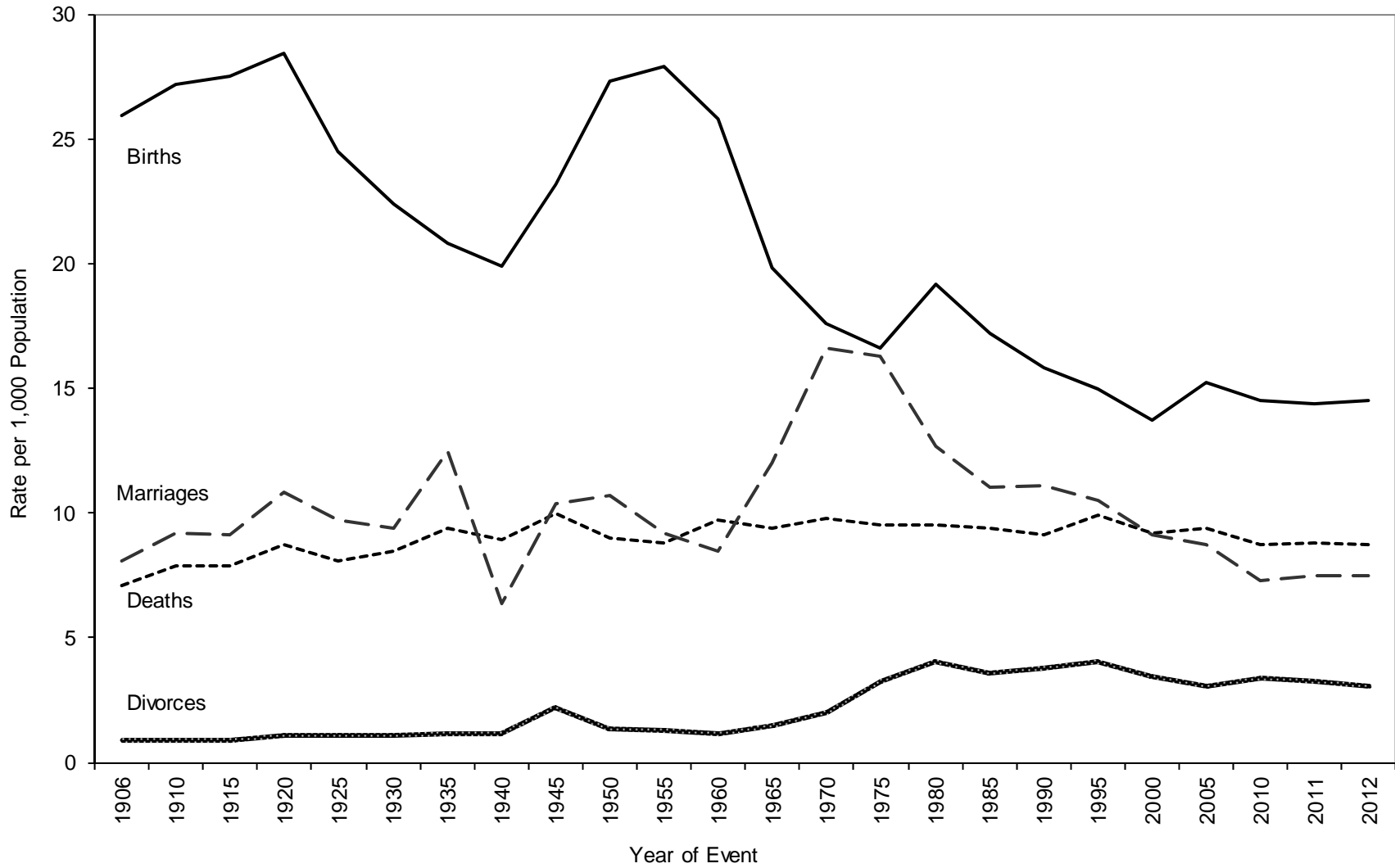
Source: South Dakota Department of Health, Office Health Statistics

**Table 3  
Selected Records in Vital Statistics,  
South Dakota, 2012**

<b>NATALITY</b>			
Oldest Father:	64	Oldest Mother:	47
Youngest Father:	14	Youngest Mother:	12
Smallest Live Birth:	1 lb. 2 oz.		
Largest Live Birth:	11 lbs. 13 oz.		
<b>Most Popular Names for Infants</b>			
<u>Boy's Names</u>	<u>Number</u>	<u>Girl's Names</u>	<u>Number</u>
Mason	63	Emma	66
Liam	62	Harper	55
William	54	Sophia	52
Jacob	51	Olivia	49
Owen	51	Ava	42
Logan	50	Ella	40
Noah	48	Isabella	35
Jack	46	Avery	33
Carter	41	Brooklyn	31
Isaac	40	Zoey	31
Jackson	40		
<b>MORTALITY</b>			
Oldest Male Decedent:	105	Oldest Female Decedent:	113
<b>MARRIAGE</b>			
Oldest Groom:	87	Oldest Bride:	85
Youngest Groom:	16	Youngest Bride:	16
<b>DIVORCE</b>			
Longest Duration of a Marriage Ending in a Divorce:	56 Years		

Source: South Dakota Department of Health, Office of Health Statistics

**Figure 1**  
**Birth, Death, Marriage, and Divorce Rates for**  
**South Dakota, 1906-2012**



Source: South Dakota Department of Health, Office of Health Statistics

**Table 4**  
**South Dakota Resident Births by Resident County and Year of Birth, 2003-2012**

	Year of Birth									
	2012	2011	2010	2009	2008	2007	2006	2005	2004	2003
<b>Total</b>	<b>12,092</b>	<b>11,834</b>	<b>11,795</b>	<b>11,930</b>	<b>12,074</b>	<b>12,253</b>	<b>11,914</b>	<b>11,466</b>	<b>11,339</b>	<b>11,022</b>
County										
Aurora	30	39	29	34	36	31	33	24	32	35
Beadle	327	294	274	268	277	261	201	177	195	174
Bennett	69	76	70	65	67	55	61	64	67	80
Bon Homme	77	62	67	53	73	70	60	72	53	65
Brookings	404	385	379	383	401	378	352	355	321	309
Brown	476	485	467	475	483	537	499	430	466	463
Brule	84	69	74	68	75	85	60	74	59	63
Buffalo	47	57	49	46	52	64	68	55	55	65
Butte	120	136	114	141	152	146	140	118	133	113
Campbell	9	8	16	18	17	10	11	6	9	7
Charles Mix	161	157	156	162	168	151	162	154	177	138
Clark	43	52	48	57	42	43	42	36	51	35
Clay	151	152	138	175	163	151	162	139	147	155
Codington	376	372	375	399	380	436	401	387	394	362
Corson	87	84	78	74	89	98	92	93	83	82
Custer	66	77	85	62	78	89	77	85	66	71
Davison	264	262	258	296	276	294	271	293	309	250
Day	76	59	68	65	60	73	66	68	64	66
Deuel	46	48	51	47	61	45	67	51	63	53
Dewey	151	144	118	119	155	162	155	154	160	156
Douglas	37	36	30	31	29	34	27	30	35	37
Edmunds	46	47	34	46	55	36	41	42	51	35
Fall River	61	49	55	46	55	54	71	62	76	74
Faulk	28	28	24	29	20	21	25	26	24	25
Grant	83	69	81	81	69	89	88	68	67	72
Gregory	44	42	50	43	40	47	37	44	46	38
Haakon	18	23	23	26	21	22	17	20	19	14
Hamlin	127	107	102	104	109	103	98	93	89	110
Hand	28	36	46	27	36	40	37	30	32	31
Hanson	51	44	55	44	48	42	61	47	50	60
Harding	14	9	15	10	17	12	11	9	12	8
Hughes	230	237	225	250	225	238	231	227	195	213
Hutchinson	86	72	81	80	85	60	74	88	72	85



**Table 4 (continued)**  
**South Dakota Resident Births by Resident County and Year of Birth, 2003-2012**

County	Year of Birth									
	2012	2011	2010	2009	2008	2007	2006	2005	2004	2003
Hyde	9	15	12	12	7	9	13	15	24	21
Jackson	69	68	75	71	74	81	61	62	67	53
Jerauld	23	24	29	29	24	19	34	24	23	27
Jones	10	11	10	14	13	14	12	17	12	13
Kingsbury	54	71	51	63	77	54	55	52	52	54
Lake	128	133	128	130	103	144	137	123	135	122
Lawrence	240	213	252	257	257	290	290	239	265	237
Lincoln	852	781	808	825	763	785	746	687	584	504
Lyman	60	76	72	53	60	59	57	72	80	72
McCook	74	66	80	84	64	79	60	79	86	90
McPherson	25	24	18	18	14	18	28	16	20	20
Marshall	56	60	50	59	47	54	52	50	53	39
Meade	327	314	334	312	372	350	377	390	341	344
Mellette	27	27	38	35	36	50	46	40	43	37
Miner	20	24	19	28	30	27	28	31	28	26
Minnehaha	2,811	2,779	2,749	2,761	2,841	2,746	2,624	2,587	2,548	2,485
Moody	93	86	89	90	79	88	91	92	97	80
Pennington	1,532	1,502	1,549	1,564	1,563	1,599	1,584	1,564	1,523	1,552
Perkins	30	29	32	28	40	24	31	34	29	24
Potter	25	27	24	21	24	33	12	27	26	20
Roberts	176	187	159	169	172	170	160	175	159	154
Sanborn	34	28	24	24	25	37	21	21	29	27
Shannon	350	344	370	344	367	396	419	372	347	385
Spink	91	72	78	60	93	75	74	78	84	79
Stanley	36	43	41	39	36	37	45	39	39	43
Sully	13	18	18	19	12	23	24	21	25	17
Todd	288	313	242	274	298	275	283	257	253	257
Tripp	66	70	61	66	70	67	87	64	84	65
Turner	89	89	101	86	96	97	104	89	80	86
Union	178	169	179	181	159	191	186	173	161	159
Walworth	66	69	56	73	53	63	70	64	63	78
Yankton	275	246	258	261	254	283	267	242	266	274
Ziebach	48	38	54	56	37	38	38	49	41	34

Note: Failure of births to add to the total is due to not stated county.  
Source: South Dakota Department of Health, Office of Health Statistics

**Table 5**  
**South Dakota Resident Deaths by Resident County and Year of Death, 2003-2012**

	Year of Death									
	2012	2011	2010	2009	2008	2007	2006	2005	2004	2003
<b>Total</b>	<b>7,283</b>	<b>7,271</b>	<b>7,087</b>	<b>6,913</b>	<b>7,056</b>	<b>6,800</b>	<b>7,038</b>	<b>7,074</b>	<b>6,811</b>	<b>7,109</b>
County										
Aurora	29	29	26	31	30	31	27	35	33	39
Beadle	182	201	187	205	189	193	191	212	199	188
Bennett	30	31	37	30	25	39	23	25	31	33
Bon Homme	71	69	69	83	71	100	79	80	69	82
Brookings	230	182	165	203	213	183	191	149	187	190
Brown	378	355	396	336	350	357	354	333	334	355
Brule	69	56	47	54	43	52	64	59	50	62
Buffalo	18	18	16	24	20	18	17	15	18	13
Butte	110	123	100	92	102	110	95	106	82	102
Campbell	17	21	11	14	14	9	18	19	12	13
Charles Mix	82	98	99	122	91	92	96	117	96	109
Clark	40	62	56	52	42	34	46	68	44	44
Clay	101	89	105	90	67	83	91	82	100	98
Codington	229	239	237	238	242	253	230	234	222	217
Corson	43	44	40	52	36	38	44	38	45	36
Custer	88	82	82	73	62	88	76	82	67	60
Davison	213	205	190	157	207	203	187	168	208	207
Day	76	86	65	95	69	74	94	82	91	102
Deuel	38	43	36	42	62	51	66	49	60	51
Dewey	65	48	56	48	53	57	53	66	71	49
Douglas	39	58	50	41	44	42	33	52	38	40
Edmunds	55	50	45	50	47	47	57	52	57	45
Fall River	111	113	104	110	104	106	107	114	111	115
Faulk	27	23	28	20	34	30	38	19	29	31
Grant	66	72	66	89	80	83	94	95	102	93
Gregory	72	58	74	56	89	54	74	65	66	72
Haakon	26	27	22	15	23	26	32	25	26	26
Hamlin	76	78	60	73	71	80	76	79	74	61
Hand	38	41	43	28	42	36	44	37	50	49
Hanson	11	24	22	19	25	20	19	26	15	15
Harding	8	11	12	8	8	6	8	11	6	12
Hughes	124	147	136	164	143	130	158	152	118	150
Hutchinson	106	111	113	105	123	92	110	109	129	133

**Table 5 (continued)**  
**South Dakota Resident Deaths by Resident County and Year of Death, 2003-2012**

County	Year of Death									
	2012	2011	2010	2009	2008	2007	2006	2005	2004	2003
Hyde	27	15	20	18	22	25	23	21	25	28
Jackson	34	35	35	29	30	37	39	26	33	26
Jerauld	38	32	27	28	27	25	30	27	31	28
Jones	10	16	5	7	6	14	6	9	12	11
Kingsbury	58	73	79	68	89	76	78	83	93	97
Lake	110	101	113	107	105	93	116	91	102	104
Lawrence	240	201	208	203	196	201	234	187	196	201
Lincoln	201	216	181	166	203	191	226	229	211	182
Lyman	42	46	28	34	21	25	28	29	30	34
McCook	80	68	74	83	71	76	71	70	75	72
McPherson	34	37	33	25	35	34	36	49	37	39
Marshall	56	59	73	65	46	46	53	60	49	46
Meade	180	165	157	178	220	214	223	236	228	182
Mellette	24	25	25	22	24	22	16	24	32	22
Miner	27	37	38	33	37	32	37	39	32	34
Minnehaha	1,232	1,301	1,273	1,228	1,233	1,151	1,150	1,146	1,016	1,156
Moody	53	49	57	54	46	56	69	66	56	60
Pennington	796	795	758	699	716	616	645	693	620	732
Perkins	38	57	48	32	43	52	46	41	36	39
Potter	44	42	28	40	47	32	37	44	33	49
Roberts	141	103	113	105	125	101	94	128	126	113
Sanborn	32	34	18	21	17	21	29	38	24	40
Shannon	130	109	131	108	112	117	121	123	133	129
Spink	84	73	72	89	77	85	75	79	68	89
Stanley	17	22	18	13	26	7	25	19	14	11
Sully	13	8	10	9	8	9	11	11	18	9
Todd	98	81	68	87	82	81	73	63	79	79
Tripp	72	66	81	79	66	68	81	85	65	80
Turner	95	105	90	92	97	105	104	109	100	118
Union	119	107	120	106	113	101	100	93	95	88
Walworth	79	77	76	60	71	58	86	92	98	76
Yankton	199	211	211	189	206	197	175	199	200	225
Ziebach	11	11	24	17	18	15	9	10	4	18

Source: South Dakota Department of Health, Office of Health Statistics

**Table 6**  
**Marriages Occurring in South Dakota by County of Occurrence and Year of Marriage, 2003-2012**

	Year of Marriage									
	2012	2011	2010	2009	2008	2007	2006	2005	2004	2003
<b>Total</b>	<b>6,236</b>	<b>6,145</b>	<b>5,939</b>	<b>5,887</b>	<b>6,148</b>	<b>6,138</b>	<b>6,303</b>	<b>6,551</b>	<b>6,485</b>	<b>6,427</b>
County										
Aurora	18	17	8	13	16	13	28	18	20	15
Beadle	148	147	138	128	137	129	117	118	135	125
Bennett	21	33	23	17	16	22	26	15	16	17
Bon Homme	54	47	51	30	54	40	42	44	46	34
Brookings	210	178	194	209	195	202	178	246	210	209
Brown	239	239	224	231	225	277	270	244	281	285
Brule	57	46	48	48	52	42	63	57	68	50
Buffalo	6	*	3	3	4	8	*	*	4	4
Butte	80	89	77	60	55	62	51	66	44	51
Campbell	8	6	7	9	7	6	*	15	7	8
Charles Mix	46	58	42	50	54	66	55	53	71	48
Clark	18	21	12	23	16	24	18	20	24	18
Clay	77	86	75	74	90	101	105	107	92	104
Codington	224	268	236	228	245	262	290	261	285	302
Corson	22	30	19	30	21	22	19	27	22	26
Custer	152	137	131	115	123	113	101	109	107	103
Davison	139	156	153	138	153	162	167	164	146	161
Day	40	29	26	36	40	33	35	41	36	38
Deuel	36	31	31	27	39	30	34	30	21	24
Dewey	18	15	7	17	21	21	12	16	13	25
Douglas	20	20	21	25	20	20	21	24	17	15
Edmunds	16	20	17	20	25	24	11	16	25	16
Fall River	60	62	52	51	75	68	68	85	65	66
Faulk	12	20	11	13	8	10	5	17	16	19
Grant	60	67	58	78	88	75	69	84	80	81
Gregory	16	36	30	24	23	23	34	32	30	32
Haakon	17	8	5	9	18	12	14	14	16	13
Hamlin	40	25	37	33	32	36	37	32	39	39
Hand	13	24	20	21	8	19	16	36	16	17
Hanson	6	12	15	14	8	12	21	16	22	11
Harding	9	5	11	8	*	3	10	*	6	9
Hughes	106	109	98	124	137	120	129	136	134	144
Hutchinson	39	33	34	34	31	36	37	40	49	54

Table 6 (continued)

## Marriages Occurring in South Dakota by County of Occurrence and Year of Marriage, 2003-2012

County	Year of Marriage									
	2012	2011	2010	2009	2008	2007	2006	2005	2004	2003
Hyde	9	7	6	*	5	4	7	5	5	13
Jackson	11	14	18	9	8	9	12	11	14	15
Jerauld	7	10	10	10	10	12	8	12	13	20
Jones	3	6	5	6	6	*	7	4	10	5
Kingsbury	22	27	31	34	36	28	37	36	42	30
Lake	89	64	81	93	71	98	97	77	77	77
Lawrence	487	466	454	461	485	485	532	502	466	421
Lincoln	155	147	168	149	173	157	158	149	160	106
Lyman	14	16	21	15	17	29	23	26	18	16
McCook	36	24	24	23	31	37	34	38	29	41
McPherson	9	9	7	7	10	5	9	12	9	14
Marshall	33	20	33	27	31	19	33	25	29	41
Meade	204	216	218	208	188	219	227	272	307	270
Mellette	29	21	30	21	18	28	22	25	28	33
Miner	9	14	16	13	8	11	7	16	11	12
Minnehaha	1,492	1,398	1,321	1,333	1,324	1,254	1,336	1,363	1,276	1,268
Moody	46	43	37	43	49	36	61	55	47	31
Pennington	863	893	891	850	932	894	883	977	998	999
Perkins	22	16	13	11	17	24	18	25	22	25
Potter	12	18	8	18	11	21	13	12	17	11
Roberts	116	100	104	104	113	92	124	107	113	142
Sanborn	13	7	8	6	9	8	10	13	11	18
Shannon	4	6	6	5	7	8	6	12	3	5
Spink	22	33	24	24	22	35	34	26	27	44
Stanley	24	25	20	28	16	10	17	21	28	19
Sully	3	5	*	*	6	7	3	6	9	3
Todd	11	15	19	22	24	22	19	21	18	23
Tripp	36	25	34	31	35	40	35	42	31	39
Turner	34	38	44	36	37	37	38	47	49	54
Union	169	151	189	176	185	191	183	203	228	255
Walworth	32	50	26	16	30	30	34	27	35	38
Yankton	184	180	155	162	190	189	185	192	186	171
Ziebach	9	5	3	*	6	4	4	7	6	5

Note: \*Department of Health policy prohibits publishing vital events in cells with less than three events at a county level.

Source: South Dakota Department of Health, Office of Health Statistics

**Table 7  
Divorces Occurring in South Dakota by County of Occurrence and Year of Divorce, 2003-2012**

	Year of Divorce									
	2012	2011	2010	2009	2008	2007	2006	2005	2004	2003
<b>Total</b>	<b>2,550</b>	<b>2,694</b>	<b>2,774</b>	<b>2,686</b>	<b>2,459</b>	<b>2,438</b>	<b>2,465</b>	<b>2,354</b>	<b>2,358</b>	<b>2,502</b>
County										
Aurora	7	6	4	9	6	8	4	7	5	6
Beadle	57	70	78	61	57	59	55	39	54	42
Bennett	4	*	*	5	*	7	*	4	4	7
Bon Homme	15	10	14	18	17	19	19	17	18	10
Brookings	85	93	91	75	75	65	79	75	72	74
Brown	127	138	146	116	103	114	110	105	133	110
Brule	13	17	10	19	13	14	10	17	15	9
Buffalo	*	*	*	*	*	3	*	*	*	*
Butte	35	31	40	51	39	37	34	43	41	45
Campbell	5	*	5	*	*	*	4	*	*	*
Charles Mix	11	12	13	9	9	9	12	5	12	15
Clark	*	8	17	7	6	6	11	11	9	12
Clay	50	36	35	44	34	34	31	40	41	26
Codington	79	96	125	93	109	102	91	96	84	104
Corson	3	*	5	*	*	*	*	3	*	*
Custer	13	32	31	33	23	28	25	32	28	29
Davison	63	68	68	56	69	70	72	60	60	68
Day	11	10	12	16	11	7	19	12	10	13
Deuel	12	13	12	9	13	10	12	11	9	10
Dewey	3	6	4	*	*	*	*	*	6	4
Douglas	9	5	5	6	6	7	3	4	9	3
Edmunds	12	12	8	13	5	8	11	10	6	8
Fall River	36	20	30	25	39	17	33	27	28	23
Faulk	5	3	3	6	3	*	*	*	3	5
Grant	19	22	10	18	16	18	28	11	16	38
Gregory	6	6	5	6	5	8	13	13	9	8
Haakon	6	3	6	7	*	5	*	7	6	6
Hamlin	8	14	14	10	5	9	10	15	8	18
Hand	4	10	8	12	9	7	5	5	3	6
Hanson	*	5	*	4	5	8	3	3	5	9
Harding	3	4	*	*	5	*	*	*	4	3
Hughes	58	64	61	62	42	66	75	60	49	63
Hutchinson	9	16	15	10	12	*	3	16	15	13

**Table 7 (continued)**  
**Divorces Occurring in South Dakota by County of Occurrence and Year of Divorce, 2003-2012**

County	Year of Divorce									
	2012	2011	2010	2009	2008	2007	2006	2005	2004	2003
Hyde	5	3	3	*	*	*	4	*	*	*
Jackson	5	3	3	6	5	*	9	*	8	*
Jerauld	10	14	6	5	*	*	3	*	*	8
Jones	*	5	*	5	*	3	*	*	*	*
Kingsbury	17	10	16	17	8	6	16	18	13	18
Lake	28	22	36	28	28	22	26	28	26	17
Lawrence	94	109	95	82	68	77	90	83	102	100
Lincoln	142	156	128	115	139	117	111	79	80	94
Lyman	6	4	4	10	7	3	9	*	3	10
McCook	17	7	15	16	15	19	13	15	13	15
McPherson	5	6	10	4	5	5	6	4	*	5
Marshall	11	10	13	8	8	8	11	10	7	10
Meade	90	107	83	128	93	102	78	120	97	112
Mellette	3	*	4	*	*	*	*	3	6	3
Miner	5	3	7	7	6	6	9	6	3	3
Minnehaha	591	662	693	619	637	640	596	549	576	595
Moody	16	16	14	16	17	14	15	12	17	17
Pennington	481	478	515	548	463	431	436	400	423	442
Perkins	7	*	*	*	*	*	6	3	12	8
Potter	7	*	4	7	8	7	3	9	*	3
Roberts	20	19	18	11	18	17	21	26	12	19
Sanborn	12	7	9	8	5	4	7	4	3	3
Shannon	*	*	*	3	*	4	*	*	*	*
Spink	16	17	15	23	11	8	16	19	15	18
Stanley	10	7	14	9	4	8	11	4	9	8
Sully	*	5	5	5	*	5	3	7	3	6
Todd	*	*	3	3	*	3	6	6	3	5
Tripp	20	10	9	18	7	12	17	11	11	18
Turner	27	36	21	28	24	19	19	31	25	22
Union	46	46	46	53	53	55	46	55	40	53
Walworth	9	15	14	21	12	7	17	19	12	19
Yankton	71	73	89	72	65	80	75	74	67	72
Ziebach	*	*	*	*	*	*	*	3	*	*

Note: \*Department of Health policy prohibits publishing vital events in cells with less than three events at a county level.  
Source: South Dakota Department of Health, Office of Health Statistics

