

Asthma

ASTHMA

Definition: Respondents who were told by a doctor, nurse, or health professional that they had asthma and that they still have asthma.

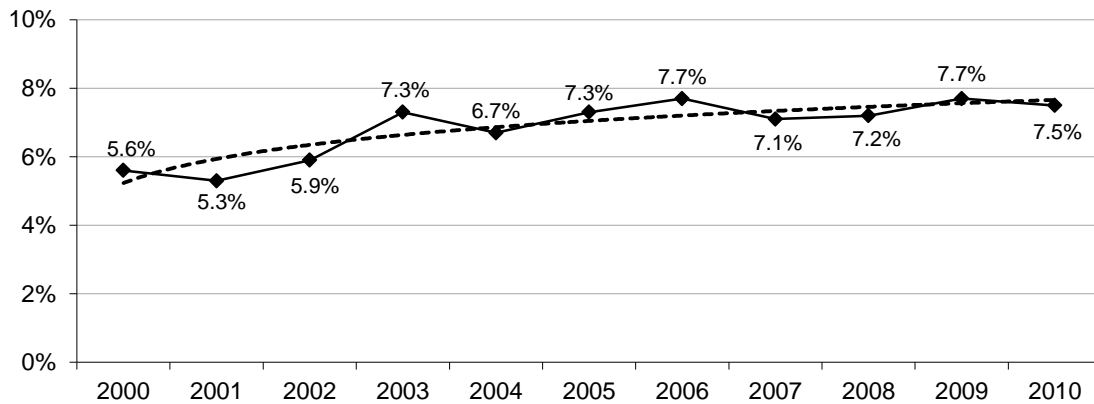
Prevalence of Asthma

- South Dakota 7%
- Nationwide median 9%

Healthy People 2020 Objective

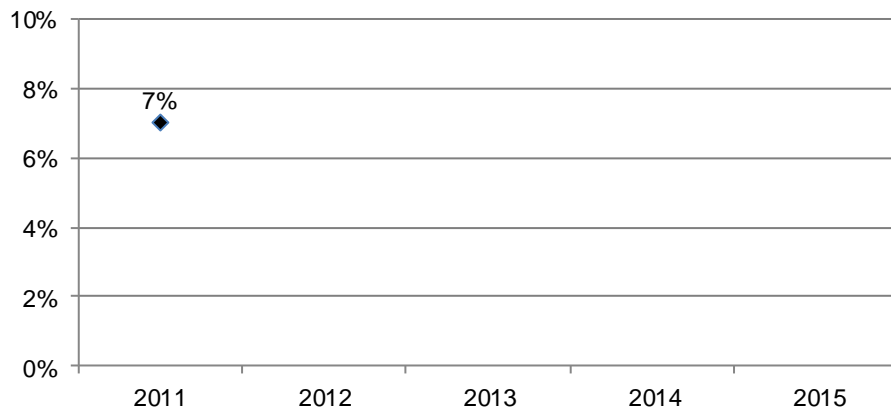
There was no stated Healthy People 2020 Objective for having asthma.

Figure 80
Percent of Respondents Who Were Told They Have Asthma, 2000-2010



Source: The Behavioral Risk Factor Surveillance System, South Dakota Department of Health, 2000-2010

Figure 81
Percent of Respondents Who Were Told They Have Asthma, 2011



Note: Beginning in 2011, the CDC began using a different methodology to weight the data, therefore current data estimates cannot be compared to previous years.

Source: The Behavioral Risk Factor Surveillance System, South Dakota Department of Health, 2011

Table 54
Respondents Who Were Told They Have Asthma, 2011

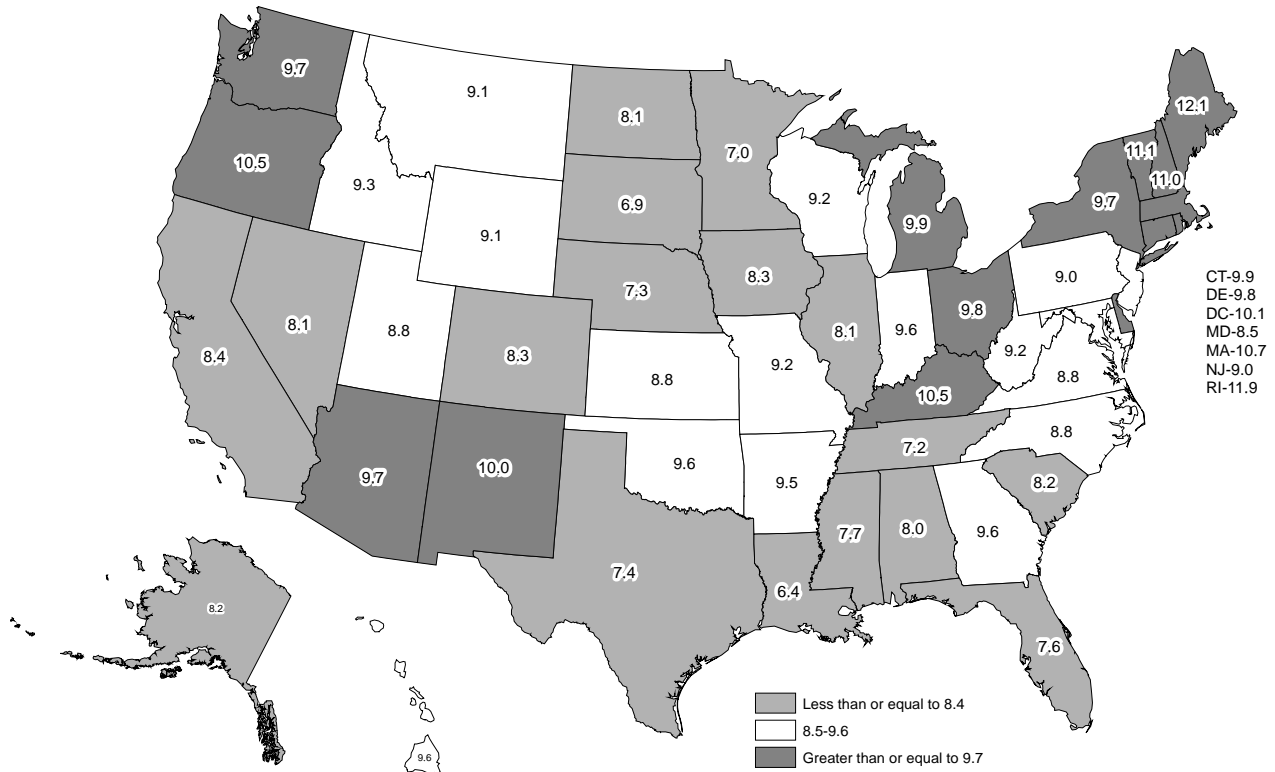
		# Resp.	% Asthma	95% CI	
				Lower	Upper
Total		8,210	7%	6%	8%
Gender	Male	3,298	5%	4%	6%
	Female	4,912	9%	7%	10%
Age	18-44	2,205	7%	5%	8%
	45-64	3,222	6%	5%	7%
	65+	2,734	9%	7%	11%
Race	White	7,053	7%	6%	8%
	American Indian	856	12%	8%	18%
Ethnicity	Hispanic	106	4%	2%	9%
	Non-Hispanic	8,091	7%	6%	8%
Household Income	Less than \$25,000	2,000	10%	8%	13%
	\$25,000-\$49,999	2,094	5%	4%	7%
	\$50,000+	2,899	5%	4%	6%
Education	High School, G.E.D., or Less	3,214	8%	6%	10%
	Some Post-High School	2,398	6%	5%	8%
	College Graduate	2,584	6%	5%	8%
Employment Status	Employed for Wages	3,635	5%	4%	7%
	Self-employed	886	4%	3%	6%
	Unemployed	342	13%	8%	19%
	Homemaker	462	7%	4%	13%
	Student	184	4%	2%	8%
	Retired	2,299	9%	7%	11%
Marital Status	Unable to Work	390	20%	14%	28%
	Married/Unmarried Couple	4,782	6%	5%	7%
	Divorced/Separated	1,079	9%	7%	12%
	Widowed	1,248	10%	7%	15%
Home Ownership Status	Never Married	1,089	8%	5%	11%
	Own Home	6,224	6%	5%	7%
Children Status	Rent Home	1,671	11%	8%	14%
	Children in Household (Ages 18-44)	1,503	7%	5%	10%
Phone Status	No Children in Household (Ages 18-44)	699	6%	4%	9%
	Landline	7,213	7%	6%	8%
	Cell Phone	997	7%	5%	9%

Source: The Behavioral Risk Factor Surveillance System, South Dakota Department of Health, 2011

National Statistics

The national median for respondents who have asthma was 9 percent, as shown in Figure 82 on the next page. South Dakota had 6.9 percent of respondents with asthma. Louisiana had the lowest percent of respondents with asthma at 6.4 percent, while Maine had the highest with 12.1 percent.

Figure 82
Nationally, Respondents Who Were Told They Have Asthma, 2011



Source: The Behavioral Risk Factor Surveillance System, South Dakota Department of Health, 2011

Further Analysis

The following data show the percent of those who have asthma for various health behaviors and conditions. For example, 17 percent of respondents who have fair or poor health have asthma, while five percent of respondents who have excellent, very good, or good health have asthma.

Health Behavior or Condition	# Respondents	% with Asthma	95% CI	
			Lower	Upper
Underweight (BMI < 18.5)	104	4%	2%	11%
Recommended (BMI = 18.5-24.9)	2,461	6%	4%	7%
Overweight (BMI = 25.0-29.9)	2,928	6%	5%	7%
Obese - Class I (BMI = 30.0-34.9)	1,504	9%	7%	13%
Obese - Classes II & III (BMI = 35.0+)	775	11%	8%	15%
Leisure Time Exercise	5,767	7%	6%	8%
No Leisure Time Exercise	2,231	7%	5%	9%
Meet Aerobic Recommendations	3,721	6%	5%	8%
Did Not Meet Aerobic Recommendations	4,071	7%	6%	9%
At Least Five Servings of Fruits and Vegetables	1,036	9%	6%	13%
Less Than Five Servings of Fruits and Vegetables	6,960	7%	6%	8%
Current Smoker	1,468	7%	5%	9%
Former Smoker	2,458	9%	7%	11%
Never Smoked	4,256	6%	5%	7%

Table 55 (continued)
Asthma Prevalence for Selected Health Behaviors and Conditions, 2011

Health Behavior or Condition	# Respondents	% with Asthma	95% CI	
			Lower	Upper
Smokeless Tobacco	404	7%	3%	12%
No Smokeless Tobacco	7,806	7%	6%	8%
Diabetes	997	11%	8%	15%
No Diabetes	7,204	6%	5%	7%
High Blood Pressure	3,207	9%	7%	11%
No High Blood Pressure	4,988	6%	5%	7%
High Blood Cholesterol	2,853	8%	6%	10%
No High Blood Cholesterol	4,019	6%	5%	7%
Flu Shot (65+)	1,865	11%	8%	14%
No Flu Shot (65+)	775	5%	3%	8%
Pneumonia Shot (65+)	1,741	11%	9%	14%
No Pneumonia Shot (65+)	811	3%	2%	5%
Drank Alcohol in Past 30 Days	4,218	5%	4%	7%
Did Not Drink Alcohol in Past 30 Days	3,676	9%	7%	11%
Binge Drinker	1,201	5%	4%	8%
Not a Binge Drinker	6,652	7%	6%	8%
Heavy Drinker	402	8%	4%	15%
Not a Heavy Drinker	7,426	7%	6%	8%
Always/Almost Always Wear Seat Belt	6,737	7%	6%	8%
Sometimes/Seldom/Never Wear Seat Belt	1,195	7%	5%	10%
Previously Had Heart Attack	561	9%	6%	14%
Never Had Heart Attack	7,616	7%	6%	8%
Have Angina or Coronary Heart Disease	529	11%	7%	17%
Do Not Have Angina or Coronary Heart Disease	7,615	7%	6%	8%
Previously Had a Stroke	301	15%	9%	26%
Never Had a Stroke	7,892	7%	6%	8%
Cancer	1,353	10%	8%	13%
No Cancer	6,826	6%	6%	8%
Skin Cancer	754	9%	6%	13%
No Skin Cancer	7,436	7%	6%	8%
Arthritis	2,563	11%	9%	13%
No Arthritis	5,607	6%	5%	7%
COPD	553	34%	27%	42%
No COPD	7,634	5%	4%	6%
Depression	1,304	14%	11%	18%
No Depression	6,880	5%	5%	6%
Kidney Disease	250	14%	8%	22%
No Kidney Disease	7,940	7%	6%	8%
Vision Impairment	1,753	8%	6%	10%
No Vision Impairment	6,418	7%	6%	8%
Good/Very Good/Excellent Health Status	6,838	5%	4%	6%
Fair/Poor Health Status	1,363	17%	13%	21%
Physical Health Not Good for 0-29 Days of the Past 30	7,519	6%	5%	7%
Physical Health Not Good for 30 Days of the Past 30	541	16%	11%	23%
Mental Health Not Good for 0-19 Days of the Past 30	7,654	6%	5%	7%
Mental Health Not Good for 20-30 Days of the Past 30	428	13%	9%	18%
Usual Activities Unattainable for 0-9 Days of the Past 30	7,554	6%	5%	7%
Usual Activities Unattainable for 10-30 Days of the Past 30	577	18%	13%	24%
Physical, Mental, or Emotional Problems	2,294	13%	11%	15%
No Physical, Mental, or Emotional Problems	5,661	5%	4%	6%
Disability with Special Equipment Needed	810	15%	11%	20%
No Disability with Special Equipment Needed	7,156	6%	5%	7%
Been Tested for HIV (18-64)	1,569	8%	6%	11%
Never Been Tested for HIV (18-64)	6,133	7%	6%	8%

Source: The Behavioral Risk Factor Surveillance System, South Dakota Department of Health, 2011