

Overview

<u>Resident Live Births</u>	
Number of Live Births	12,270
Rate per 1,000 Population	14.2
<u>Infant Deaths</u>	
Number of Infant Deaths	59
Rate per 1,000 Live Births	4.81
<u>Resident Deaths</u>	
Number of Resident Deaths	7,838
Rate per 100,000 Population	905.7
<u>Fetal Deaths</u>	
Number of Fetal Deaths	90
Rate per 1,000 Live Births + Fetal Deaths	7.28
<u>Marriages</u>	
Number of Marriages	6,271
Rate per 1,000 Population	7.2
<u>Divorces</u>	
Number of Divorces	2,400
Rate per 1,000 Population	2.8

This report contains selected health statistics that are widely used by the Department of Health, other government agencies, and the public. This information has proven to be useful in determining trends in health status, for planning health care services and for making decisions about public health programs. It also fulfills diverse requirements in the business community and academic research.

Vital statistics data are compiled and maintained under the direction of the Director of the Health Statistics Office (HSO). The data are analyzed by staff from the HSO. Data from HSO can be found in the following sections: Natality, Infant Mortality, Mortality, Induced Abortion, Marriage and Divorce, Health Status Profiles, and Health Status Maps. When referring to divorce throughout this report, please note that annulments are included in the Divorce category.

Infectious disease data are collected, compiled, and analyzed within the Office of Disease Prevention. Data on communicable diseases can be found in the Infectious Disease section of the report.

Quick References

Pages

• Tables 1, & 3-6 – Number of Vital Events by County	4-5 and 8-15
• Figure 6 – Graph Comparing State and National Rates	38
• Tables 7, 34, 45, 76 & 78 – Tables Comparing State and National Rates	19, 37, 53, 99, 100
• Maps 1 through 23 – Health Status Maps by County	199 – 222

The contacts listed in the Preface welcome suggestions for additional changes that would make the next compilation even more useful to those involved in improving the health of South Dakotans.

**Table 1
South Dakota Vital Statistics by County, 2016**

	Births		Deaths		Infant Deaths		Fetal Deaths		Marriages		Divorces	
	Number	Rate	Number	Rate	Number	Rate	Number	Rate	Number	Rate	Number	Rate
South Dakota	12,270	14.2	7,838	905.7	59	4.81	90	7.28	6,271	7.2	2,400	2.8
County												
Aurora	49	17.9	20	731.0	*	*	*	*	15	5.5	3	1.1
Beadle	347	19.2	195	1,077.3	*	*	*	*	120	6.6	48	2.7
Bennett	65	18.8	45	1,300.6	*	*	*	*	22	6.4	4	1.2
Bon Homme	68	9.7	75	1,073.9	*	*	*	*	36	5.2	15	2.1
Brookings	414	12.1	202	591.8	*	*	*	*	228	6.7	66	1.9
Brown	557	14.2	376	960.9	*	*	4	7.13	271	6.9	108	2.8
Brule	71	13.6	60	1,145.5	*	*	*	*	34	6.5	14	2.7
Buffalo	52	25.5	33	1,615.3	*	*	*	*	3	1.5	*	*
Butte	135	13.2	98	960.3	*	*	*	*	66	6.5	38	3.7
Campbell	8	5.8	13	943.4	*	*	*	*	4	2.9	*	*
Charles Mix	164	17.5	113	1,202.6	*	*	5	29.59	52	5.5	7	0.7
Clark	65	17.8	47	1,285.6	*	*	3	44.12	23	6.3	10	2.7
Clay	147	10.4	105	745.4	*	*	*	*	79	5.6	32	2.3
Codington	370	13.2	241	858.8	*	*	*	*	203	7.2	91	3.2
Corson	101	24.4	51	1,234.3	*	*	*	*	17	4.1	4	1.0
Custer	69	8.0	110	1,279.7	*	*	*	*	156	18.1	29	3.4
Davison	257	12.9	224	1,125.5	*	*	*	*	133	6.7	60	3.0
Day	50	9.0	76	1,364.2	*	*	*	*	26	4.7	12	2.2
Deuel	64	15.1	47	1,110.8	*	*	*	*	45	10.6	10	2.4
Dewey	163	28.4	52	905.6	*	*	*	*	24	4.2	*	*
Douglas	46	15.7	42	1,432.5	*	*	*	*	23	7.8	5	1.7
Edmunds	46	11.6	43	1,088.1	*	*	*	*	24	6.1	15	3.8
Fall River	60	8.8	113	1,649.9	*	*	*	*	53	7.7	29	4.2
Faulk	31	13.2	31	1,316.9	*	*	*	*	8	3.4	4	1.7
Grant	84	11.8	91	1,273.1	*	*	*	*	46	6.4	14	2.0
Gregory	58	13.9	59	1,414.5	*	*	*	*	41	9.8	10	2.4
Haakon	19	10.0	22	1,162.8	*	*	*	*	8	4.2	10	5.3
Hamlin	111	18.4	73	1,211.0	*	*	*	*	33	5.5	13	2.2
Hand	39	11.8	48	1,446.2	*	*	*	*	19	5.7	11	3.3
Hanson	39	11.6	22	652.0	*	*	*	*	21	6.2	*	*
Harding	16	12.5	8	626.0	*	*	*	*	10	7.8	*	*
Hughes	233	13.2	148	840.9	*	*	*	*	116	6.6	54	3.1
Hutchinson	120	16.3	115	1,560.8	*	*	*	*	36	4.9	17	2.3

Table 1 (continued)
South Dakota Vital Statistics by County, 2016

County	Births		Deaths		Infant Deaths		Fetal Deaths		Marriages		Divorces	
	Number	Rate	Number	Rate	Number	Rate	Number	Rate	Number	Rate	Number	Rate
Hyde	20	14.8	28	2,071.0	*	*	*	*	4	3.0	*	*
Jackson	81	24.4	37	1,112.4	*	*	*	*	11	3.3	3	0.9
Jerauld	20	10.0	26	1,297.4	*	*	*	*	6	3.0	3	1.5
Jones	13	14.0	8	863.0	*	*	*	*	6	6.5	*	*
Kingsbury	67	13.4	68	1,359.7	*	*	*	*	28	5.6	13	2.6
Lake	133	10.3	126	976.1	*	*	*	*	83	6.4	29	2.2
Lawrence	241	9.5	235	929.6	*	*	4	16.33	450	17.8	85	3.4
Lincoln	810	14.9	259	475.5	4	4.94	5	6.13	218	4.0	139	2.6
Lyman	82	21.1	39	1,001.5	*	*	*	*	22	5.6	*	*
McCook	68	12.1	73	1,297.8	*	*	*	*	24	4.3	16	2.8
McPherson	27	11.1	40	1,640.7	*	*	*	*	8	3.3	4	1.6
Marshall	74	15.4	63	1,312.2	*	*	*	*	37	7.7	13	2.7
Meade	269	9.7	193	696.9	*	*	*	*	261	9.4	77	2.8
Mellette	44	20.9	28	1,332.1	*	*	*	*	29	13.8	4	1.9
Miner	21	9.2	38	1,665.9	*	*	*	*	9	3.9	4	1.8
Minnehaha	2,936	15.7	1,382	737.8	12	4.09	19	6.43	1,522	8.1	634	3.4
Moody	91	14.0	48	737.9	*	*	*	*	22	3.4	9	1.4
Oglala Lakota	284	19.7	163	1,130.8	6	21.13	5	17.30	6	0.4	*	*
Pennington	1,470	13.4	902	824.7	7	4.76	12	8.10	832	7.6	432	3.9
Perkins	40	13.4	41	1,374.5	*	*	*	*	19	6.4	*	*
Potter	28	12.2	39	1,696.4	*	*	*	*	17	7.4	4	1.7
Roberts	168	16.4	112	1,092.2	*	*	*	*	91	8.9	9	0.9
Sanborn	39	16.3	29	1,210.4	*	*	*	*	13	5.4	3	1.3
Spink	85	13.2	83	1,292.8	*	*	*	*	29	4.5	18	2.8
Stanley	42	14.0	23	768.5	*	*	*	*	24	8.0	14	4.7
Sully	16	11.3	6	422.2	*	*	*	*	6	4.2	8	5.6
Todd	260	25.6	94	925.7	3	11.54	*	*	14	1.4	5	0.5
Tripp	79	14.4	82	1,493.1	*	*	*	*	34	6.2	10	1.8
Turner	75	9.0	108	1,298.5	*	*	*	*	47	5.7	13	1.6
Union	163	10.9	121	810.2	*	*	*	*	175	11.7	35	2.3
Walworth	61	10.9	89	1,586.5	*	*	*	*	39	7.0	12	2.1
Yankton	318	14.1	240	1,061.2	*	*	*	*	183	8.1	60	2.7
Ziebach	27	9.6	17	606.9	*	*	*	*	7	2.5	*	*

Note: Births, deaths, infant deaths, and fetal deaths are by county of residence; marriages and divorces are by county of occurrence. Birth, marriage, and divorce rates are per 1,000 population. Death rates are per 100,000 population. Infant mortality rates are per 1,000 live births. Fetal mortality rates are per 1,000 live births plus fetal deaths.

*Department of Health policy prohibits publishing vital events in cells with less than three events at a county level.

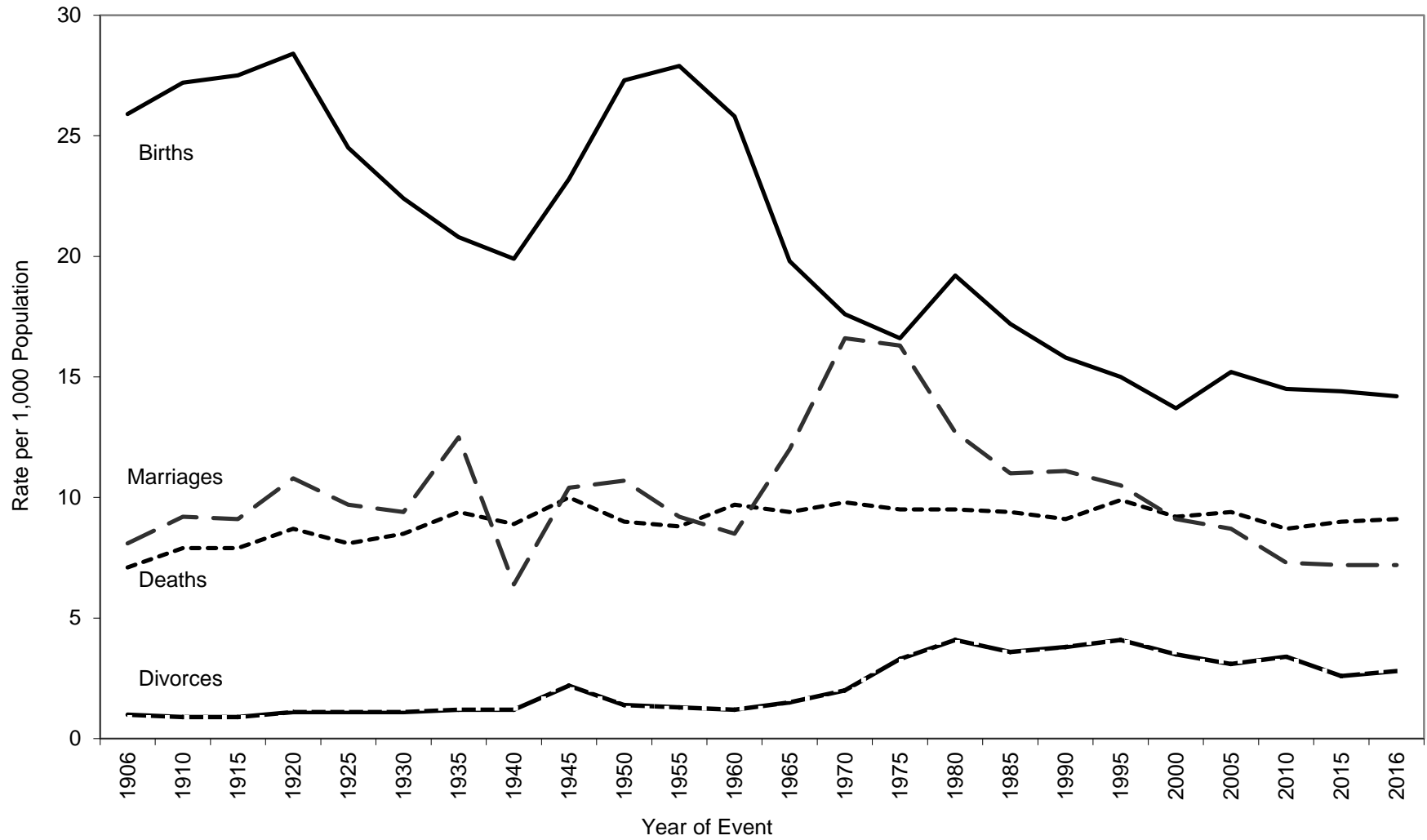
Source: South Dakota Department of Health, Office Health Statistics

**Table 2
Selected Records in Vital Statistics,
South Dakota, 2016**

NATALITY			
Oldest Father:	68	Oldest Mother:	50
Youngest Father:	15	Youngest Mother:	13
Smallest Live Birth:	1 lb. 0 oz.		
Largest Live Birth:	12 lbs. 8 oz.		
Most Popular Names for Infants			
<u>Boy's Names</u>	<u>Number</u>	<u>Girl's Names</u>	<u>Number</u>
Oliver	66	Emma	58
Liam	58	Harper	53
Owen	51	Ava	48
Grayson	50	Charlotte	45
Jackson	48	Olivia	45
William	45	Avery	42
Hudson	42	Elizabeth	40
Benjamin	40	Sophia	40
Samuel	40	Evelyn	36
Lincoln	39	Nora	33
MORTALITY			
Oldest Male Decedent:	104	Oldest Female Decedent:	110
DIVORCE			
Longest Duration of a Marriage Ending in a Divorce:	55 Years		

Source: South Dakota Department of Health, Office of Health Statistics

Figure 1
Birth, Death, Marriage, and Divorce Rates for
South Dakota, 1906-2016



Source: South Dakota Department of Health, Office of Health Statistics

Table 3
South Dakota Resident Births by Resident County and Year of Birth, 2007-2016

	Year of Birth									
	2016	2015	2014	2013	2012	2011	2010	2009	2008	2007
Total	12,270	12,323	12,281	12,243	12,092	11,834	11,795	11,930	12,074	12,253
County										
Aurora	49	33	42	40	30	39	29	34	36	31
Beadle	347	297	366	337	327	294	274	268	277	261
Bennett	65	71	72	69	69	76	70	65	67	55
Bon Homme	68	76	56	57	77	62	67	53	73	70
Brookings	414	471	406	430	404	385	379	383	401	378
Brown	557	492	482	512	476	485	467	475	483	537
Brule	71	69	77	70	84	69	74	68	75	85
Buffalo	52	42	53	58	47	57	49	46	52	64
Butte	135	100	142	133	120	136	114	141	152	146
Campbell	8	13	15	12	9	8	16	18	17	10
Charles Mix	164	156	174	151	161	157	156	162	168	151
Clark	65	61	67	51	43	52	48	57	42	43
Clay	147	145	143	166	151	152	138	175	163	151
Codington	370	381	372	410	376	372	375	399	380	436
Corson	101	89	86	93	87	84	78	74	89	98
Custer	69	86	65	71	66	77	85	62	78	89
Davison	257	242	271	263	264	262	258	296	276	294
Day	50	73	56	52	76	59	68	65	60	73
Deuel	64	44	47	46	46	48	51	47	61	45
Dewey	163	148	153	148	151	144	118	119	155	162
Douglas	46	43	40	33	37	36	30	31	29	34
Edmunds	46	48	53	46	46	47	34	46	55	36
Fall River	60	76	55	63	61	49	55	46	55	54
Faulk	31	32	38	23	28	28	24	29	20	21
Grant	84	74	97	80	83	69	81	81	69	89
Gregory	58	50	62	45	44	42	50	43	40	47
Haakon	19	26	17	20	18	23	23	26	21	22
Hamlin	111	121	118	124	127	107	102	104	109	103
Hand	39	24	42	38	28	36	46	27	36	40
Hanson	39	36	49	56	51	44	55	44	48	42
Harding	16	21	20	17	14	9	15	10	17	12
Hughes	233	249	229	255	230	237	225	250	225	238
Hutchinson	120	120	102	107	86	72	81	80	85	60

Table 3 (continued)
South Dakota Resident Births by Resident County and Year of Birth, 2007-2016

County	Year of Birth									
	2016	2015	2014	2013	2012	2011	2010	2009	2008	2007
Hyde	20	15	14	19	9	15	12	12	7	9
Jackson	81	67	71	78	69	68	75	71	74	81
Jerauld	20	16	32	24	23	24	29	29	24	19
Jones	13	11	9	10	10	11	10	14	13	14
Kingsbury	67	64	66	61	54	71	51	63	77	54
Lake	133	134	122	140	128	133	128	130	103	144
Lawrence	241	220	245	230	240	213	252	257	257	290
Lincoln	810	751	766	753	852	781	808	825	763	785
Lyman	82	74	71	69	60	76	72	53	60	59
McCook	68	80	81	75	74	66	80	84	64	79
McPherson	27	22	30	24	25	24	18	18	14	18
Marshall	74	70	72	62	56	60	50	59	47	54
Meade	269	304	318	320	327	314	334	312	372	350
Mellette	44	40	35	37	27	27	38	35	36	50
Miner	21	32	22	28	20	24	19	28	30	27
Minnehaha	2,936	3,046	2,947	2,863	2,811	2,779	2,749	2,761	2,841	2,746
Moody	91	93	93	93	93	86	89	90	79	88
Oglala Lakota	284	337	312	352	350	344	370	344	367	396
Pennington	1,470	1,536	1,540	1,596	1,532	1,502	1,549	1,564	1,563	1,599
Perkins	40	33	35	40	30	29	32	28	40	24
Potter	28	24	24	20	25	27	24	21	24	33
Roberts	168	181	177	201	176	187	159	169	172	170
Sanborn	39	39	37	35	34	28	24	24	25	37
Spink	85	67	69	80	91	72	78	60	93	75
Stanley	42	45	39	35	36	43	41	39	36	37
Sully	16	11	15	17	13	18	18	19	12	23
Todd	260	274	279	250	288	313	242	274	298	275
Tripp	79	71	71	65	66	70	61	66	70	67
Turner	75	104	81	86	89	89	101	86	96	97
Union	163	169	140	150	178	169	179	181	159	191
Walworth	61	86	85	70	66	69	56	73	53	63
Yankton	318	266	281	253	275	246	258	261	254	283
Ziebach	27	32	35	31	48	38	54	56	37	38

Note: Failure of births to add to the total is due to county not stated.
Source: South Dakota Department of Health, Office of Health Statistics

Table 4
South Dakota Resident Deaths by Resident County and Year of Death, 2007-2016

	Year of Death									
	2016	2015	2014	2013	2012	2011	2010	2009	2008	2007
Total	7,838	7,724	7,500	7,079	7,283	7,271	7,087	6,913	7,056	6,800
County										
Aurora	20	24	28	32	29	29	26	31	30	31
Beadle	195	205	196	175	182	201	187	205	189	193
Bennett	45	34	32	29	30	31	37	30	25	39
Bon Homme	75	71	77	78	71	69	69	83	71	100
Brookings	202	182	202	183	230	182	165	203	213	183
Brown	376	362	393	399	378	355	396	336	350	357
Brule	60	57	53	50	69	56	47	54	43	52
Buffalo	33	21	17	16	18	18	16	24	20	18
Butte	98	112	102	93	110	123	100	92	102	110
Campbell	13	19	11	10	17	21	11	14	14	9
Charles Mix	113	129	95	83	82	98	99	122	91	92
Clark	47	41	45	50	40	62	56	52	42	34
Clay	105	101	100	101	101	89	105	90	67	83
Codington	241	235	264	224	229	239	237	238	242	253
Corson	51	47	37	52	43	44	40	52	36	38
Custer	110	92	85	77	88	82	82	73	62	88
Davison	224	210	241	179	213	205	190	157	207	203
Day	76	69	66	73	76	86	65	95	69	74
Deuel	47	48	37	39	38	43	36	42	62	51
Dewey	52	72	68	68	65	48	56	48	53	57
Douglas	42	45	47	38	39	58	50	41	44	42
Edmunds	43	40	39	44	55	50	45	50	47	47
Fall River	113	120	130	118	111	113	104	110	104	106
Faulk	31	40	28	34	27	23	28	20	34	30
Grant	91	89	86	106	66	72	66	89	80	83
Gregory	59	64	64	63	72	58	74	56	89	54
Haakon	22	29	23	35	26	27	22	15	23	26
Hamlin	73	59	61	68	76	78	60	73	71	80
Hand	48	49	41	55	38	41	43	28	42	36
Hanson	22	20	34	21	11	24	22	19	25	20
Harding	8	*	11	4	8	11	12	8	8	6
Hughes	148	154	137	135	124	147	136	164	143	130
Hutchinson	115	119	118	106	106	111	113	105	123	92

Table 4 (continued)
South Dakota Resident Deaths by Resident County and Year of Death, 2007-2016

County	Year of Death									
	2016	2015	2014	2013	2012	2011	2010	2009	2008	2007
Hyde	28	21	15	14	27	15	20	18	22	25
Jackson	37	37	34	34	34	35	35	29	30	37
Jerauld	26	25	28	18	38	32	27	28	27	25
Jones	8	10	9	9	10	16	5	7	6	14
Kingsbury	68	75	69	77	58	73	79	68	89	76
Lake	126	118	110	105	110	101	113	107	105	93
Lawrence	235	240	225	226	240	201	208	203	196	201
Lincoln	259	230	207	181	201	216	181	166	203	191
Lyman	39	41	32	24	42	46	28	34	21	25
McCook	73	85	83	73	80	68	74	83	71	76
McPherson	40	35	43	41	34	37	33	25	35	34
Marshall	63	39	49	47	56	59	73	65	46	46
Meade	193	185	200	190	180	165	157	178	220	214
Mellette	28	26	19	19	24	25	25	22	24	22
Miner	38	34	28	34	27	37	38	33	37	32
Minnehaha	1,382	1,408	1,277	1,256	1,232	1,301	1,273	1,228	1,233	1,151
Moody	48	54	58	53	53	49	57	54	46	56
Oglala Lakota	163	149	112	124	130	109	131	108	112	117
Pennington	902	883	832	743	796	795	758	699	716	616
Perkins	41	39	51	39	38	57	48	32	43	52
Potter	39	40	34	29	44	42	28	40	47	32
Roberts	112	106	126	104	141	103	113	105	125	101
Sanborn	29	25	33	35	32	34	18	21	17	21
Spink	83	76	67	84	84	73	72	89	77	85
Stanley	23	19	27	14	17	22	18	13	26	7
Sully	6	11	5	13	13	8	10	9	8	9
Todd	94	85	87	101	98	81	68	87	82	81
Tripp	82	73	73	67	72	66	81	79	66	68
Turner	108	109	124	92	95	105	90	92	97	105
Union	121	116	137	92	119	107	120	106	113	101
Walworth	89	94	92	79	79	77	76	60	71	58
Yankton	240	254	221	207	199	211	211	189	206	197
Ziebach	17	20	12	12	11	11	24	17	18	15

Note: Failure of deaths to add to the total is due to county not stated.

*Department of Health policy prohibits publishing vital events in cells with less than three events at a county level.

Source: South Dakota Department of Health, Office of Health Statistics

Table 5
Marriages Occurring in South Dakota by County of Occurrence and Year of Marriage, 2007-2016

	Year of Marriage									
	2016	2015	2014	2013	2012	2011	2010	2009	2008	2007
Total	6,271	6,195	6,040	5,919	6,236	6,145	5,939	5,887	6,148	6,138
County										
Aurora	15	19	10	9	18	17	8	13	16	13
Beadle	120	117	143	135	148	147	138	128	137	129
Bennett	22	21	16	18	21	33	23	17	16	22
Bon Homme	36	34	36	35	54	47	51	30	54	40
Brookings	228	217	240	227	210	178	194	209	195	202
Brown	271	273	238	221	239	239	224	231	225	277
Brule	34	56	45	54	57	46	48	48	52	42
Buffalo	3	7	4	3	6	*	3	3	4	8
Butte	66	78	90	81	80	89	77	60	55	62
Campbell	4	6	8	6	8	6	7	9	7	6
Charles Mix	52	47	36	42	46	58	42	50	54	66
Clark	23	20	27	22	18	21	12	23	16	24
Clay	79	61	71	67	77	86	75	74	90	101
Codington	203	200	207	219	224	268	236	228	245	262
Corson	17	25	25	20	22	30	19	30	21	22
Custer	156	194	181	162	152	137	131	115	123	113
Davison	133	136	120	127	139	156	153	138	153	162
Day	26	34	34	31	40	29	26	36	40	33
Deuel	45	31	38	36	36	31	31	27	39	30
Dewey	24	19	15	15	18	15	7	17	21	21
Douglas	23	20	21	18	20	20	21	25	20	20
Edmunds	24	18	12	19	16	20	17	20	25	24
Fall River	53	66	68	63	60	62	52	51	75	68
Faulk	8	6	15	13	12	20	11	13	8	10
Grant	46	49	52	60	60	67	58	78	88	75
Gregory	41	19	26	19	16	36	30	24	23	23
Haakon	8	9	9	10	17	8	5	9	18	12
Hamlin	33	32	33	31	40	25	37	33	32	36
Hand	19	22	28	12	13	24	20	21	8	19
Hanson	21	15	17	15	6	12	15	14	8	12
Harding	10	7	7	3	9	5	11	8	*	3
Hughes	116	123	122	116	106	109	98	124	137	120
Hutchinson	36	23	39	29	39	33	34	34	31	36

Table 5 (continued)
Marriages Occurring in South Dakota by County of Occurrence and Year of Marriage, 2007-2016

County	Year of Marriage									
	2016	2015	2014	2013	2012	2011	2010	2009	2008	2007
Hyde	4	3	3	3	9	7	6	*	5	4
Jackson	11	11	15	14	11	14	18	9	8	9
Jerauld	6	5	10	15	7	10	10	10	10	12
Jones	6	5	*	6	3	6	5	6	6	*
Kingsbury	28	19	14	22	22	27	31	34	36	28
Lake	83	74	76	83	89	64	81	93	71	98
Lawrence	450	474	448	482	487	466	454	461	485	485
Lincoln	218	167	178	196	155	147	168	149	173	157
Lyman	22	22	17	19	14	16	21	15	17	29
McCook	24	30	31	21	36	24	24	23	31	37
McPherson	8	11	10	7	9	9	7	7	10	5
Marshall	37	28	23	31	33	20	33	27	31	19
Meade	261	321	238	264	204	216	218	208	188	219
Mellette	29	30	19	17	29	21	30	21	18	28
Miner	9	6	9	11	9	14	16	13	8	11
Minnehaha	1,522	1,529	1,494	1,367	1,492	1,398	1,321	1,333	1,324	1,254
Moody	22	36	26	40	46	43	37	43	49	36
Oglala Lakota	6	10	13	8	4	6	6	5	7	8
Pennington	832	786	774	768	863	893	891	850	932	894
Perkins	19	20	19	20	22	16	13	11	17	24
Potter	17	7	18	18	12	18	8	18	11	21
Roberts	91	91	77	85	116	100	104	104	113	92
Sanborn	13	10	10	8	13	7	8	6	9	8
Spink	29	32	29	20	22	33	24	24	22	35
Stanley	24	14	13	18	24	25	20	28	16	10
Sully	6	5	6	4	3	5	*	*	6	7
Todd	14	12	11	13	11	15	19	22	24	22
Tripp	34	28	33	28	36	25	34	31	35	40
Turner	47	45	55	51	34	38	44	36	37	37
Union	175	157	148	146	169	151	189	176	185	191
Walworth	39	26	37	30	32	50	26	16	30	30
Yankton	183	171	149	162	184	180	155	162	190	189
Ziebach	7	6	*	4	9	5	3	*	6	4

Note: *Department of Health policy prohibits publishing vital events in cells with less than three events at a county level.
Source: South Dakota Department of Health, Office of Health Statistics

Table 6
Divorces Occurring in South Dakota by County of Occurrence and Year of Divorce, 2007-2016

	Year of Divorce									
	2016	2015	2014	2013	2012	2011	2010	2009	2008	2007
Total	2,400	2,252	2,374	2,450	2,550	2,694	2,774	2,686	2,459	2,438
County										
Aurora	3	4	5	5	7	6	4	9	6	8
Beadle	48	55	67	52	57	70	78	61	57	59
Bennett	4	3	3	*	4	*	*	5	*	7
Bon Homme	15	15	16	9	15	10	14	18	17	19
Brookings	66	83	57	79	85	93	91	75	75	65
Brown	108	86	86	119	127	138	146	116	103	114
Brule	14	16	19	21	13	17	10	19	13	14
Buffalo	*	*	*	*	*	*	*	*	*	3
Butte	38	35	42	35	35	31	40	51	39	37
Campbell	*	*	*	4	5	*	5	*	*	*
Charles Mix	7	12	11	5	11	12	13	9	9	9
Clark	10	8	9	9	*	8	17	7	6	6
Clay	32	38	40	39	50	36	35	44	34	34
Codington	91	73	92	103	79	96	125	93	109	102
Corson	4	5	*	3	3	*	5	*	*	*
Custer	29	30	21	20	13	32	31	33	23	28
Davison	60	47	58	49	63	68	68	56	69	70
Day	12	11	11	8	11	10	12	16	11	7
Deuel	10	4	13	15	12	13	12	9	13	10
Dewey	*	4	*	4	3	6	4	*	*	*
Douglas	5	7	5	*	9	5	5	6	6	7
Edmunds	15	6	10	8	12	12	8	13	5	8
Fall River	29	23	23	35	36	20	30	25	39	17
Faulk	4	*	5	*	5	3	3	6	3	*
Grant	14	16	17	20	19	22	10	18	16	18
Gregory	10	11	8	10	6	6	5	6	5	8
Haakon	10	*	*	5	6	3	6	7	*	5
Hamlin	13	4	3	12	8	14	14	10	5	9
Hand	11	6	5	10	4	10	8	12	9	7
Hanson	*	5	*	4	*	5	*	4	5	8
Harding	*	3	*	4	3	4	*	*	5	*
Hughes	54	49	43	62	58	64	61	62	42	66
Hutchinson	17	9	18	10	9	16	15	10	12	*

Table 6 (continued)
Divorces Occurring in South Dakota by County of Occurrence and Year of Divorce, 2007-2016

County	Year of Divorce									
	2016	2015	2014	2013	2012	2011	2010	2009	2008	2007
Hyde	*	4	4	4	5	3	3	*	*	*
Jackson	3	3	3	*	5	3	3	6	5	*
Jerauld	3	6	3	8	10	14	6	5	*	*
Jones	*	*	5	5	*	5	*	5	*	3
Kingsbury	13	14	7	12	17	10	16	17	8	6
Lake	29	31	21	32	28	22	36	28	28	22
Lawrence	85	74	90	80	94	109	95	82	68	77
Lincoln	139	111	147	143	142	156	128	115	139	117
Lyman	*	3	3	4	6	4	4	10	7	3
McCook	16	15	21	11	17	7	15	16	15	19
McPherson	4	3	5	*	5	6	10	4	5	5
Marshall	13	8	10	11	11	10	13	8	8	8
Meade	77	99	65	83	90	107	83	128	93	102
Mellette	4	4	*	*	3	*	4	*	*	*
Miner	4	4	8	6	5	3	7	7	6	6
Minnehaha	634	586	610	593	591	662	693	619	637	640
Moody	9	15	13	10	16	16	14	16	17	14
Oglala Lakota	*	*	*	*	*	*	*	3	*	4
Pennington	432	406	452	442	481	478	515	548	463	431
Perkins	*	*	*	3	7	*	*	*	*	*
Potter	4	3	5	3	7	*	4	7	8	7
Roberts	9	11	11	18	20	19	18	11	18	17
Sanborn	3	4	5	6	12	7	9	8	5	4
Spink	18	17	23	17	16	17	15	23	11	8
Stanley	14	7	*	5	10	7	14	9	4	8
Sully	8	4	3	*	*	5	5	5	*	5
Todd	5	3	*	*	*	*	3	3	*	3
Tripp	10	11	11	7	20	10	9	18	7	12
Turner	13	20	17	31	27	36	21	28	24	19
Union	35	38	51	61	46	46	46	53	53	55
Walworth	12	8	10	14	9	15	14	21	12	7
Yankton	60	62	65	69	71	73	89	72	65	80
Ziebach	*	*	*	*	*	*	*	*	*	*

Note: *Department of Health policy prohibits publishing vital events in cells with less than three events at a county level.
Source: South Dakota Department of Health, Office of Health Statistics

