

Overview

<u>Resident Live Births</u>	
Number of Live Births	11,930
Rate per 1,000 Population	15.8
<u>Infant Deaths</u>	
Number of Infant Deaths	80
Rate per 1,000 Live Births	6.71
<u>Resident Deaths</u>	
Number of Resident Deaths	6,913
Rate per 100,000 Population	915.8
<u>Fetal Deaths</u>	
Number of Fetal Deaths	66
Rate per 1,000 Live Births + Fetal Deaths	5.50
<u>Marriages</u>	
Number of Marriages	5,887
Rate per 1,000 Population	7.8
<u>Divorces</u>	
Number of Divorces	2,686
Rate per 1,000 Population	3.6

This report contains selected health statistics that are widely used by the Department of Health, other government agencies, and the public. This

information has proven to be useful in determining trends in health status, for planning health care services and for making decisions about public health programs. It also fulfills diverse requirements in the business community and academic research.

Vital statistics data are compiled and maintained under the direction of the Administrator of the Office of Data, Statistics, and Vital Records (ODSVR). The data are analyzed by staff from the ODSVR. Data from ODSVR can be found in the following sections: Natality, Infant Mortality, Mortality, Induced Abortion, Marriage and Divorce, Health Status Profiles, and Health Status Maps.

Communicable disease data are collected, compiled, and analyzed within the Office of Disease Prevention. Data on communicable diseases can be found in the Communicable Disease section of the report.

Quick References

Pages

• Tables 2, & 4-7 – Number of Vital Events by County	6-7 and 10-17
• Figures 2, 10, 27 & 29 – Graphs Comparing State and National Rates	22, 44, 92, 93
• Tables 8, 41, 52, 74 & 75 – Tables Comparing State and National Rates	21, 43, 57, 92, 94
• Tables 76 & 77 – Disease Data by Region and Characteristics	100 – 102
• Maps 1 through 29 – Health Status Maps by County	192 - 220

The contacts listed in the Preface welcome suggestions for additional changes that would make the next compilation even more useful to those involved in improving the health of South Dakotans.

Table 1
Selected South Dakota Health Statistics, 2008-2009

EVENT	2009	2008	Percent Change
BIRTHS: Number	11,930	12,074	-1.2
Rate per 1,000 Population	15.8	16.0	-1.3
Birth by Race			
Number of White Births	9,330	9,432	-1.1
White Birth Rate per 1,000	13.9	14.1	-1.4
Number of American Indian Births	2,149	2,222	-3.3
American Indian Birth Rate per 1,000	31.5	32.5	-3.1
Births (12 through 14 years olds)			
Number	10	13	-23.1
Rate per 1,000 12 through 14 year olds	0.3	0.4	-25.0
Births (15 through 17 year olds)			
Number	303	345	-12.2
Rate per 1,000 15 through 17 year olds	8.1	9.2	-12.0
Births (15 through 19 year olds)			
Number	1,092	1,117	-2.2
Rate per 1,000 15 through 19 year olds	17.5	17.9	-2.2
Low Birth Weight Babies (Less than 2,500 grams)			
Number	700	783	-10.6
Rate per 1,000 Births	58.7	64.9	-9.6
DEATHS: Number			
Rate per 100,000 Population	915.8	934.8	-2.0
Deaths by Race			
Number of White Deaths	6,340	6,487	-2.3
White Death Rate per 100,000	947.1	969.1	-2.3
Number of American Indian Deaths	540	531	1.7
American Indian Death Rate per 100,000	790.8	777.7	1.7
Deaths (12 through 14 years of age)			
Number	11	6	83.3
Rate per 100,000 12 through 14 year olds	30.5	16.6	83.7
Deaths (15 through 17 years of age)			
Number	29	24	20.8
Rate per 100,000 15 through 17 year olds	77.1	63.8	20.8
Deaths (15 through 19 year of age)			
Number	58	47	23.4
Rate per 100,000 15 through 19 year olds	92.9	75.2	23.5

Table 1 (continued)
Selected South Dakota Health Statistics, 2008-2009

EVENT	2009	2008	Percent Change
INFANT MORTALITY:			
Number	80	100	-20.0
Rate per 1,000 Births	6.71	8.28	-19.0
FETAL DEATHS:			
Number	66	61	8.2
Rate per 1,000 Births + Fetal Deaths	5.50	5.03	9.3
MARRIAGES:			
Number	5,887	6,148	-4.2
Rate per 1,000 Population	7.8	8.1	-3.7
DIVORCES:			
Number	2,686	2,459	9.2
Rate per 1,000 Population	3.6	3.3	9.1

Note: Birth and death data are for South Dakota residents.
Marriage and divorce data reflect events occurring in South Dakota.
Source: South Dakota Department of Health, Office of Data, Statistics, and Vital Records

Table 2
South Dakota Vital Statistics by County, 2009

	Births		Deaths		Infant Deaths		Fetal Deaths		Marriages		Divorces	
	Number	Rate	Number	Rate	Number	Rate	Number	Rate	Number	Rate	Number	Rate
South Dakota	11,930	15.8	6,913	915.8	80	6.71	66	5.50	5,887	7.8	2,686	3.6
County												
Aurora	34	11.1	31	1013.7	*	*	*	*	13	4.3	9	2.9
Beadle	268	15.7	205	1204.3	3	11.19	*	*	128	7.5	61	3.6
Bennett	65	18.2	30	839.4	*	*	*	*	17	4.8	5	1.4
Bon Homme	53	7.3	83	1143.3	*	*	*	*	30	4.1	18	2.5
Brookings	383	13.6	203	719.3	*	*	*	*	209	7.4	75	2.7
Brown	475	13.4	336	947.5	*	*	*	*	231	6.5	116	3.3
Brule	68	12.7	54	1006.7	*	*	*	*	48	8.9	19	3.5
Buffalo	46	22.6	24	1181.1	*	*	*	*	3	1.5	*	*
Butte	141	15.5	92	1011.7	*	*	*	*	60	6.6	51	5.6
Campbell	18	10.1	14	785.6	*	*	*	*	9	5.1	*	*
Charles Mix	162	17.3	122	1304.8	*	*	*	*	50	5.3	9	1.0
Clark	57	13.8	52	1255.1	*	*	*	*	23	5.6	7	1.7
Clay	175	12.9	90	664.8	*	*	*	*	74	5.5	44	3.3
Codington	399	15.4	238	919.0	*	*	4	9.93	228	8.8	93	3.6
Corson	74	17.7	52	1243.7	3	40.54	*	*	30	7.2	*	*
Custer	62	8.5	73	1003.4	*	*	*	*	115	15.8	33	4.5
Davison	296	15.8	157	837.7	*	*	3	10.03	138	7.4	56	3.0
Day	65	10.4	95	1515.9	*	*	*	*	36	5.7	16	2.6
Deuel	47	10.4	42	933.7	*	*	*	*	27	6.0	9	2.0
Dewey	119	19.9	48	803.8	*	*	*	*	17	2.8	*	*
Douglas	31	9.0	41	1185.7	*	*	*	*	25	7.2	6	1.7
Edmunds	46	10.5	50	1145.0	*	*	*	*	20	4.6	13	3.0
Fall River	46	6.2	110	1475.9	*	*	*	*	51	6.8	25	3.4
Faulk	29	11.0	20	757.6	*	*	*	*	13	4.9	6	2.3
Grant	81	10.3	89	1134.2	*	*	*	*	78	9.9	18	2.3
Gregory	43	9.0	56	1168.6	*	*	*	*	24	5.0	6	1.3
Haakon	26	11.8	15	683.1	*	*	*	*	9	4.1	7	3.2
Hamlin	104	18.8	73	1317.7	*	*	*	*	33	6.0	10	1.8
Hand	27	7.2	28	748.5	*	*	*	*	21	5.6	12	3.2
Hanson	44	14.0	19	605.3	*	*	*	*	14	4.5	4	1.3
Harding	10	7.4	8	591.3	*	*	*	*	8	5.9	*	*
Hughes	250	15.2	164	995.1	3	12.00	*	*	124	7.5	62	3.8
Hutchinson	80	9.9	105	1300.3	*	*	*	*	34	4.2	10	1.2

Table 2 (continued)
South Dakota Vital Statistics by County, 2009

County	Births		Deaths		Infant Deaths		Fetal Deaths		Marriages		Divorces	
	Number	Rate	Number	Rate	Number	Rate	Number	Rate	Number	Rate	Number	Rate
Hyde	12	7.2	18	1077.2	*	*	*	*	*	*	*	*
Jackson	71	24.2	29	989.8	*	*	*	*	9	3.1	6	2.0
Jerauld	29	12.6	28	1220.0	*	*	*	*	10	4.4	5	2.2
Jones	14	11.7	7	586.8	*	*	*	*	6	5.0	5	4.2
Kingsbury	63	10.8	68	1169.4	*	*	*	*	34	5.8	17	2.9
Lake	130	11.5	107	948.9	*	*	*	*	93	8.2	28	2.5
Lawrence	257	11.8	203	931.1	*	*	3	11.54	461	21.1	82	3.8
Lincoln	825	34.2	166	687.9	7	8.48	10	11.98	149	6.2	115	4.8
Lyman	53	13.6	34	872.9	*	*	*	*	15	3.9	10	2.6
McCook	84	14.4	65	1114.5	*	*	*	*	23	3.9	16	2.7
McPherson	18	6.2	83	2858.1	*	*	*	*	7	2.4	4	1.4
Marshall	59	12.9	25	546.3	*	*	*	*	27	5.9	8	1.7
Meade	312	12.9	178	733.9	3	9.62	9	28.04	208	8.6	128	5.3
Mellette	35	16.8	22	1056.2	*	*	*	*	21	10.1	*	*
Miner	28	9.7	33	1144.2	*	*	*	*	13	4.5	7	2.4
Minnehaha	2,761	18.6	1228	828.2	20	7.24	13	4.69	1,333	9.0	619	4.2
Moody	90	13.6	54	818.8	*	*	*	*	43	6.5	16	2.4
Pennington	1,564	17.7	699	789.3	8	5.12	*	*	850	9.6	548	6.2
Perkins	28	8.3	32	951.5	*	*	*	*	11	3.3	*	*
Potter	21	7.8	40	1485.3	*	*	*	*	18	6.7	7	2.6
Roberts	169	16.9	105	1048.3	*	*	*	*	104	10.4	11	1.1
Sanborn	24	9.0	21	785.0	*	*	*	*	6	2.2	8	3.0
Shannon	344	27.6	108	866.4	4	11.63	4	11.49	5	0.4	3	0.2
Spink	60	8.0	89	1194.0	*	*	*	*	24	3.2	23	3.1
Stanley	39	14.1	13	469.0	*	*	*	*	28	10.1	9	3.2
Sully	19	12.2	9	578.4	*	*	*	*	*	*	5	3.2
Todd	274	30.3	87	961.3	3	10.95	*	*	22	2.4	3	0.3
Tripp	66	10.3	79	1228.6	*	*	*	*	31	4.8	18	2.8
Turner	86	9.7	92	1039.7	*	*	*	*	36	4.1	28	3.2
Union	181	14.4	106	842.3	*	*	*	*	176	14.0	53	4.2
Walworth	73	12.2	60	1004.4	*	*	*	*	16	2.7	21	3.5
Yankton	261	12.1	189	872.9	*	*	*	*	162	7.5	72	3.3
Ziebach	56	22.2	17	674.9	*	*	*	*	*	*	*	*

Note: Births, deaths, infant deaths, and fetal deaths are by county of residence; marriages and divorces are by county of occurrence.
 Birth, marriage, and divorce rates are per 1,000 population. Death rates are per 100,000 population. Infant mortality rates are per 1,000 live births.
 Fetal mortality rates are per 1,000 live births plus fetal deaths.
 *Department of Health policy prohibits publishing vital events in cells with less than three events at a county level.

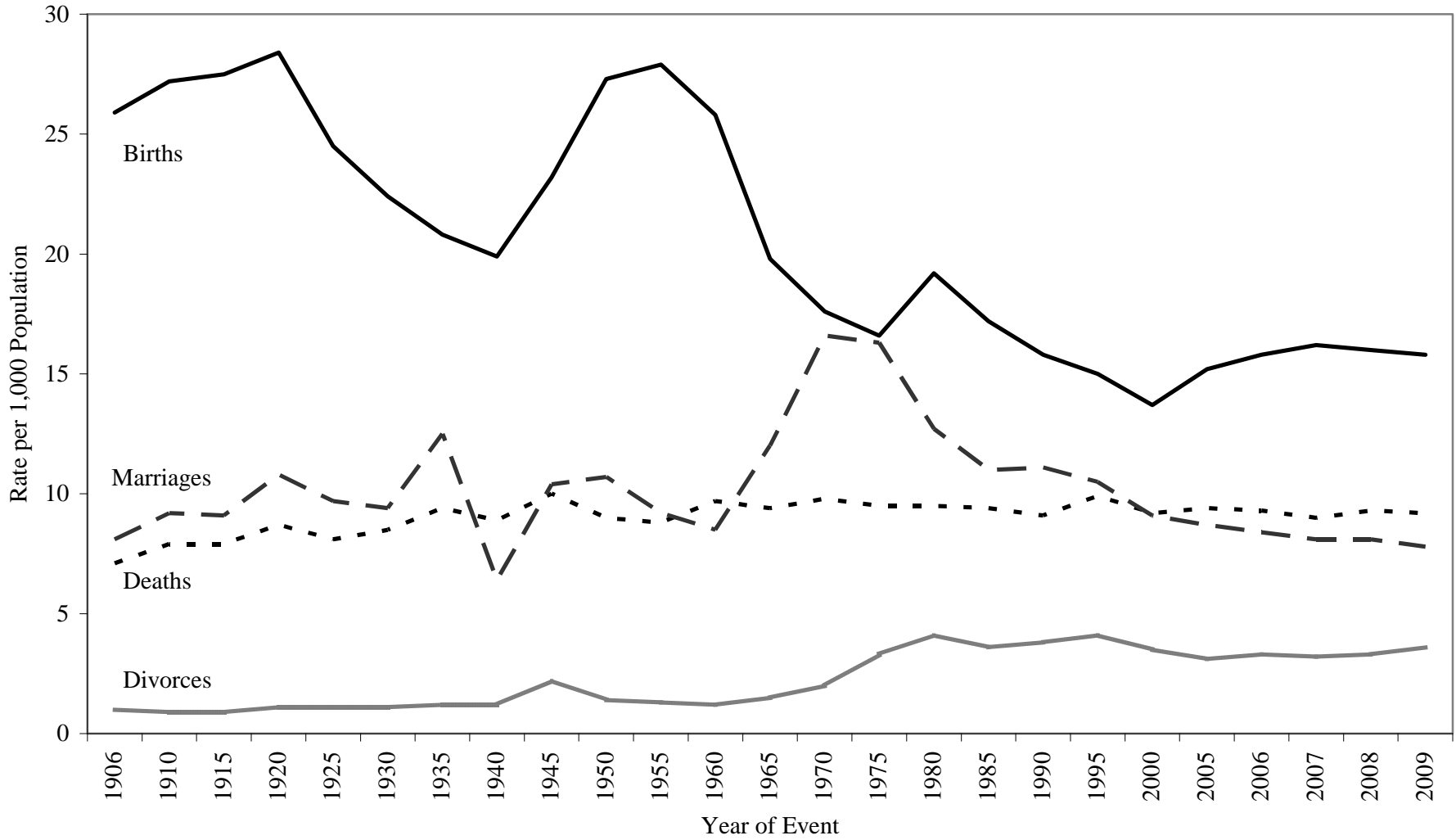
Source: South Dakota Department of Health, Office of Data, Statistics, and Vital Records

**Table 3
Selected Records in Vital Statistics,
South Dakota, 2009**

NATALITY			
Oldest Father:	68	Oldest Mother:	47
Youngest Father:	14	Youngest Mother:	13
Smallest Live Birth:	0 lb. 3 oz.		
Largest Live Birth:	12 lbs. 7 oz.		
Most Popular Names for Infants			
Boy's Names	Number	Girl's Names	Number
Ethan	69	Ava	55
Noah	66	Emma	54
Logan	52	Isabella	51
Gavin	51	Alexis	50
Mason	51	Sophia	50
Aiden	50	Addison	46
Wyatt	48	Elizabeth	43
Carter	45	Emily	38
Jackson	45	Hannah	38
William	45	Madison	38
MORTALITY			
Oldest Male Decedent:	104	Oldest Female Decedent:	110
MARRIAGE			
Oldest Groom:	93	Oldest Bride:	87
Youngest Groom:	16	Youngest Bride:	16
DIVORCE			
Longest Duration of a Marriage Ending in a Divorce:	53 Years		

Source: South Dakota Department of Health, Office of Data, Statistics, and Vital Records

Figure 1
Birth, Death, Marriage, and Divorce Rates for
South Dakota, 1906-2009



Source: South Dakota Department of Health, Office of Data, Statistics, and Vital Records

Table 4
South Dakota Resident Births by Resident County and Year of Birth, 2000-2009

	Year of Birth									
	2009	2008	2007	2006	2005	2004	2003	2002	2001	2000
Total	11,930	12,074	12,253	11,914	11,466	11,339	11,022	10,698	10,475	10,346
County										
Aurora	34	36	31	33	24	32	35	22	28	33
Beadle	268	277	261	201	177	195	174	192	198	172
Bennett	65	67	55	61	64	67	80	61	70	59
Bon Homme	53	73	70	60	72	53	65	51	57	50
Brookings	383	401	378	352	355	321	309	308	337	323
Brown	475	483	537	499	430	466	463	446	418	487
Brule	68	75	85	60	74	59	63	63	63	54
Buffalo	46	52	64	68	55	55	65	54	50	29
Butte	141	152	146	140	118	133	113	121	119	128
Campbell	18	17	10	11	6	9	7	13	16	16
Charles Mix	162	168	151	162	154	177	138	150	162	142
Clark	57	42	43	42	36	51	35	41	38	40
Clay	175	163	151	162	139	147	155	162	154	175
Codington	399	380	436	401	387	394	362	314	332	370
Corson	74	89	98	92	93	83	82	91	71	97
Custer	62	78	89	77	85	66	71	70	60	51
Davison	296	276	294	271	293	309	250	246	247	246
Day	65	60	73	66	68	64	66	63	62	68
Deuel	47	61	45	67	51	63	53	44	45	44
Dewey	119	155	162	155	154	160	156	149	150	129
Douglas	31	29	34	27	30	35	37	32	34	36
Edmunds	46	55	36	41	42	51	35	40	55	36
Fall River	46	55	54	71	62	76	74	59	58	62
Faulk	29	20	21	25	26	24	25	31	26	19
Grant	81	69	89	88	68	67	72	94	83	74
Gregory	43	40	47	37	44	46	38	30	46	39
Haakon	26	21	22	17	20	19	14	25	17	22
Hamlin	104	109	103	98	93	89	110	88	90	83
Hand	27	36	40	37	30	32	31	24	37	24
Hanson	44	48	42	61	47	50	60	45	67	59
Harding	10	17	12	11	9	12	8	18	15	15
Hughes	250	225	238	231	227	195	213	190	194	197
Hutchinson	80	85	60	74	88	72	85	81	89	89

Table 4 (continued)
South Dakota Resident Births by Resident County and Year of Birth, 2000-2009

County	Year of Birth									
	2009	2008	2007	2006	2005	2004	2003	2002	2001	2000
Hyde	12	7	9	13	15	24	21	18	14	18
Jackson	71	74	81	61	62	67	53	62	51	53
Jerauld	29	24	19	34	24	23	27	17	24	17
Jones	14	13	14	12	17	12	13	8	14	4
Kingsbury	63	77	54	55	52	52	54	49	53	57
Lake	130	103	144	137	123	135	122	109	118	110
Lawrence	257	257	290	290	239	265	237	245	239	214
Lincoln	825	763	785	746	687	584	504	426	458	367
Lyman	53	60	59	57	72	80	72	83	67	69
McCook	84	64	79	60	79	86	90	73	78	71
McPherson	18	14	18	28	16	20	20	37	22	26
Marshall	59	47	54	52	50	53	39	28	40	34
Meade	312	372	350	377	390	341	344	407	430	311
Mellette	35	36	50	46	40	43	37	31	31	29
Miner	28	30	27	28	31	28	26	24	24	34
Minnehaha	2,761	2,841	2,746	2,624	2,587	2,548	2,485	2,482	2,302	2,312
Moody	90	79	88	91	92	97	80	74	87	74
Pennington	1,564	1,563	1,599	1,584	1,564	1,523	1,552	1,385	1,334	1,413
Perkins	28	40	24	31	34	29	24	37	23	28
Potter	21	24	33	12	27	26	20	24	30	28
Roberts	169	172	170	160	175	159	154	125	155	142
Sanborn	24	25	37	21	21	29	27	25	24	30
Shannon	344	367	396	419	372	347	385	366	336	343
Spink	60	93	75	74	78	84	79	91	73	88
Stanley	39	36	37	45	39	39	43	37	31	39
Sully	19	12	23	24	21	25	17	24	20	15
Todd	274	298	275	283	257	253	257	281	256	244
Tripp	66	70	67	87	64	84	65	73	68	79
Turner	86	96	97	104	89	80	86	83	85	87
Union	181	159	191	186	173	161	159	201	147	182
Walworth	73	53	63	70	64	63	78	68	66	69
Yankton	261	254	283	267	242	266	274	237	244	240
Ziebach	56	37	38	38	49	41	34	50	43	51

Note: *Department of Health policy prohibits publishing vital events in cells with less than three events at a county level.

Failure of births to add to the total is due to unknown county.

Source: South Dakota Department of Health, Office of Data, Statistics, and Vital Records

Table 5
South Dakota Resident Deaths by Resident County and Year of Death, 2000-2009

	Year of Death									
	2009	2008	2007	2006	2005	2004	2003	2002	2001	2000
Total	6,913	7,056	6,800	7,038	7,074	6,811	7,109	6,886	6,915	7,014
County										
Aurora	31	30	31	27	35	33	39	43	50	38
Beadle	205	189	193	191	212	199	188	189	196	216
Bennett	30	25	39	23	25	31	33	34	29	27
Bon Homme	83	71	100	79	80	69	82	79	93	87
Brookings	203	213	183	191	149	187	190	179	186	190
Brown	336	350	357	354	333	334	355	341	366	369
Brule	54	43	52	64	59	50	62	51	52	48
Buffalo	24	20	18	17	15	18	13	14	22	30
Butte	92	102	110	95	106	82	102	106	83	92
Campbell	14	14	9	18	19	12	13	14	19	14
Charles Mix	122	91	92	96	117	96	109	95	91	110
Clark	52	42	34	46	68	44	44	45	50	38
Clay	90	67	83	91	82	100	98	91	88	113
Codington	238	242	253	230	234	222	217	218	239	217
Corson	52	36	38	44	38	45	36	35	37	46
Custer	73	62	88	76	82	67	60	75	86	73
Davison	157	207	203	187	168	208	207	192	175	189
Day	95	69	74	94	82	91	102	96	95	88
Deuel	42	62	51	66	49	60	51	46	43	47
Dewey	48	53	57	53	66	71	49	50	40	58
Douglas	41	44	42	33	52	38	40	46	40	47
Edmunds	50	47	47	57	52	57	45	48	60	72
Fall River	110	104	106	107	114	111	115	116	115	112
Faulk	20	34	30	38	19	29	31	29	34	26
Grant	89	80	83	94	95	102	93	92	91	105
Gregory	56	89	54	74	65	66	72	72	65	94
Haakon	15	23	26	32	25	26	26	27	19	43
Hamlin	73	71	80	76	79	74	61	80	62	61
Hand	28	42	36	44	37	50	49	48	46	46
Hanson	19	25	20	19	26	15	15	20	28	19
Harding	8	8	6	8	11	6	12	8	7	7
Hughes	164	143	130	158	152	118	150	163	152	142
Hutchinson	105	123	92	110	109	129	133	131	148	110

Table 5 (continued)
South Dakota Resident Deaths by Resident County and Year of Death, 2000-2009

County	Year of Death									
	2009	2008	2007	2006	2005	2004	2003	2002	2001	2000
Hyde	18	22	25	23	21	25	28	21	24	21
Jackson	29	30	37	39	26	33	26	31	19	21
Jerauld	28	27	25	30	27	31	28	29	33	30
Jones	7	6	14	6	9	12	11	3	8	10
Kingsbury	68	89	76	78	83	93	97	105	88	97
Lake	107	105	93	116	91	102	104	103	126	102
Lawrence	203	196	201	234	187	196	201	201	183	191
Lincoln	166	203	191	226	229	211	182	171	152	157
Lyman	34	21	25	28	29	30	34	33	35	36
McCook	65	71	76	71	70	75	72	73	67	53
McPherson	83	35	34	36	49	37	39	35	34	51
Marshall	25	46	46	53	60	49	46	61	69	48
Meade	178	220	214	223	236	228	182	174	173	173
Mellette	22	24	22	16	24	32	22	20	17	25
Miner	33	37	32	37	39	32	34	42	37	40
Minnehaha	1,228	1,233	1,151	1,150	1,146	1,016	1,156	1,054	1,112	1,082
Moody	54	46	56	69	66	56	60	49	58	70
Pennington	699	716	616	645	693	620	732	704	664	654
Perkins	32	43	52	46	41	36	39	34	45	49
Potter	40	47	32	37	44	33	49	47	37	42
Roberts	105	125	101	94	128	126	113	117	107	127
Sanborn	21	17	21	29	38	24	40	22	30	26
Shannon	108	112	117	121	123	133	129	124	110	111
Spink	89	77	85	75	79	68	89	85	74	89
Stanley	13	26	7	25	19	14	11	20	21	19
Sully	9	8	9	11	11	18	9	9	7	11
Todd	87	82	81	73	63	79	79	74	68	81
Tripp	79	66	68	81	85	65	80	87	89	80
Turner	92	97	105	104	109	100	118	103	123	118
Union	106	113	101	100	93	95	88	92	116	115
Walworth	60	71	58	86	92	98	76	83	99	87
Yankton	189	206	197	175	199	200	225	193	173	204
Ziebach	17	18	15	9	10	4	18	14	10	20

Note: *Department of Health policy prohibits publishing vital events in cells with less than three events at a county level.

Source: South Dakota Department of Health, Office of Data, Statistics, and Vital Records

Table 6
Marriages Occurring in South Dakota by County of Occurrence and Year of Marriage, 2000-2009

	Year of Marriage									
	2009	2008	2007	2006	2005	2004	2003	2002	2001	2000
Total	5,887	6,148	6,138	6,303	6,551	6,485	6,427	6,585	6,719	6,882
County										
Aurora	13	16	13	28	18	20	15	18	21	18
Beadle	128	137	129	117	118	135	125	106	118	143
Bennett	17	16	22	26	15	16	17	16	19	18
Bon Homme	30	54	40	42	44	46	34	51	41	38
Brookings	209	195	202	178	246	210	209	212	189	212
Brown	231	225	277	270	244	281	285	288	245	261
Brule	48	52	42	63	57	68	50	54	62	58
Buffalo	3	4	8	*	*	4	4	7	*	5
Butte	60	55	62	51	66	44	51	67	78	59
Campbell	9	7	6	*	15	7	8	5	6	9
Charles Mix	50	54	66	55	53	71	48	79	57	54
Clark	23	16	24	18	20	24	18	24	18	17
Clay	74	90	101	105	107	92	104	93	100	74
Codington	228	245	262	290	261	285	302	295	274	304
Corson	30	21	22	19	27	22	26	36	29	30
Custer	115	123	113	101	109	107	103	102	102	128
Davison	138	153	162	167	164	146	161	164	183	152
Day	36	40	33	35	41	36	38	51	39	39
Deuel	27	39	30	34	30	21	24	36	29	22
Dewey	17	21	21	12	16	13	25	25	20	19
Douglas	25	20	20	21	24	17	15	22	23	19
Edmunds	20	25	24	11	16	25	16	18	20	33
Fall River	51	75	68	68	85	65	66	74	75	44
Faulk	13	8	10	5	17	16	19	8	16	15
Grant	78	88	75	69	84	80	81	81	110	92
Gregory	24	23	23	34	32	30	32	32	32	32
Haakon	9	18	12	14	14	16	13	12	15	9
Hamlin	33	32	36	37	32	39	39	44	30	37
Hand	21	8	19	16	36	16	17	23	18	17
Hanson	14	8	12	21	16	22	11	12	19	12
Harding	8	*	3	10	0	6	9	9	6	9
Hughes	124	137	120	129	136	134	144	124	120	153
Hutchinson	34	31	36	37	40	49	54	33	44	32

Table 6 (continued)
Marriages Occurring in South Dakota by County of Occurrence and Year of Marriage, 2000-2009

County	Year of Marriage									
	2009	2008	2007	2006	2005	2004	2003	2002	2001	2000
Hyde	*	5	4	7	5	5	13	8	8	6
Jackson	9	8	9	12	11	14	15	8	14	16
Jerauld	10	10	12	8	12	13	20	12	12	20
Jones	6	6	*	7	4	10	5	5	9	*
Kingsbury	34	36	28	37	36	42	30	41	47	37
Lake	93	71	98	97	77	77	77	80	74	76
Lawrence	461	485	485	532	502	466	421	400	446	483
Lincoln	149	173	157	158	149	160	106	128	117	123
Lyman	15	17	29	23	26	18	16	20	18	11
McCook	23	31	37	34	38	29	41	33	44	43
McPherson	7	10	5	9	12	9	14	8	18	18
Marshall	27	31	19	33	25	29	41	27	28	32
Meade	208	188	219	227	272	307	270	261	263	335
Mellette	21	18	28	22	25	28	33	29	25	21
Miner	13	8	11	7	16	11	12	19	13	17
Minnehaha	1,333	1,324	1,254	1,336	1,363	1,276	1,268	1,325	1,281	1,372
Moody	43	49	36	61	55	47	31	34	47	51
Pennington	850	932	894	883	977	998	999	1,048	1,017	1,083
Perkins	11	17	24	18	25	22	25	12	19	11
Potter	18	11	21	13	12	17	11	16	17	22
Roberts	104	113	92	124	107	113	142	132	149	148
Sanborn	6	9	8	10	13	11	18	12	4	11
Shannon	5	7	8	6	12	3	5	3	16	15
Spink	24	22	35	34	26	27	44	37	45	43
Stanley	28	16	10	17	21	28	19	20	19	17
Sully	*	6	7	3	6	9	3	11	5	4
Todd	22	24	22	19	21	18	23	21	20	20
Tripp	31	35	40	35	42	31	39	55	57	49
Turner	36	37	37	38	47	49	54	41	44	45
Union	176	185	191	183	203	228	255	286	409	349
Walworth	16	30	30	34	27	35	38	27	40	32
Yankton	162	190	189	185	192	186	171	194	229	199
Ziebach	*	6	4	4	7	6	5	11	5	7

Note: *Department of Health policy prohibits publishing vital events in cells with less than three events at a county level.

Source: South Dakota Department of Health, Office of Data, Statistics, and Vital Records

Table 7
Divorces Occurring in South Dakota by County of Occurrence and Year of Divorce, 2000-2009

	Year of Divorce									
	2009	2008	2007	2006	2005	2004	2003	2002	2001	2000
Total	2,686	2,459	2,438	2,465	2,354	2,358	2,502	2,561	2,522	2,678
County										
Aurora	9	6	8	4	7	5	6	6	8	4
Beadle	61	57	59	55	39	54	42	50	41	64
Bennett	5	*	7	*	4	4	7	7	7	7
Bon Homme	18	17	19	19	17	18	10	16	12	11
Brookings	75	75	65	79	75	72	74	98	76	104
Brown	116	103	114	110	105	133	110	125	110	148
Brule	19	13	14	10	17	15	9	13	13	13
Buffalo	*	*	3	*	*	0	*	*	*	*
Butte	51	39	37	34	43	41	45	46	46	45
Campbell	*	*	*	4	0	*	*	3	5	3
Charles Mix	9	9	9	12	5	12	15	18	12	12
Clark	7	6	6	11	11	9	12	11	6	14
Clay	44	34	34	31	40	41	26	37	36	45
Codington	93	109	102	91	96	84	104	97	84	91
Corson	*	*	0	*	3	*	*	0	*	0
Custer	33	23	28	25	32	28	29	28	29	30
Davison	56	69	70	72	60	60	68	73	67	64
Day	16	11	7	19	12	10	13	11	13	13
Deuel	9	13	10	12	11	9	10	6	8	14
Dewey	*	*	0	*	*	6	4	5	*	5
Douglas	6	6	7	3	4	9	3	8	9	4
Edmunds	13	5	8	11	10	6	8	7	11	6
Fall River	25	39	17	33	27	28	23	29	31	15
Faulk	6	3	*	*	*	3	5	4	3	5
Grant	18	16	18	28	11	16	38	23	25	21
Gregory	6	5	8	13	13	9	8	12	15	12
Haakon	7	*	5	*	7	6	6	6	4	8
Hamlin	10	5	9	10	15	8	18	13	14	15
Hand	12	9	7	5	5	3	6	4	10	8
Hanson	4	5	8	3	3	5	9	8	5	3
Harding	*	5	*	0	*	4	3	5	5	4
Hughes	62	42	66	75	60	49	63	74	70	54
Hutchinson	10	12	0	3	16	15	13	10	13	13

Table 7 (continued)
Divorces Occurring in South Dakota by County of Occurrence and Year of Divorce, 2000-2009

County	Year of Divorce									
	2009	2008	2007	2006	2005	2004	2003	2002	2001	2000
Hyde	*	*	*	4	*	*	*	3	6	*
Jackson	6	5	*	9	*	8	*	4	3	*
Jerauld	5	*	*	3	0	*	8	3	3	7
Jones	5	*	3	*	0	*	*	4	5	*
Kingsbury	17	8	6	16	18	13	18	17	17	20
Lake	28	28	22	26	28	26	17	24	26	31
Lawrence	82	68	77	90	83	102	100	118	82	85
Lincoln	115	139	117	111	79	80	94	69	59	51
Lyman	10	7	3	9	*	3	10	4	3	8
McCook	16	15	19	13	15	13	15	9	7	7
McPherson	4	5	5	6	4	*	5	*	6	6
Marshall	8	8	8	11	10	7	10	11	15	14
Meade	128	93	102	78	120	97	112	107	121	111
Mellette	*	*	*	*	3	6	3	5	3	7
Miner	7	6	6	9	6	3	3	7	5	9
Minnehaha	619	637	640	596	549	576	595	581	636	649
Moody	16	17	14	15	12	17	17	16	15	21
Pennington	548	463	431	436	400	423	442	455	456	511
Perkins	*	*	0	6	3	12	8	8	3	10
Potter	7	8	7	3	9	0	3	5	7	9
Roberts	11	18	17	21	26	12	19	12	22	21
Sanborn	8	5	4	7	4	3	3	7	6	7
Shannon	3	*	4	*	*	*	*	*	0	0
Spink	23	11	8	16	19	15	18	20	30	26
Stanley	9	4	8	11	4	9	8	5	11	15
Sully	5	*	5	3	7	3	6	4	5	3
Todd	3	*	3	6	6	3	5	4	6	5
Tripp	18	7	12	17	11	11	18	20	11	14
Turner	28	24	19	19	31	25	22	19	19	18
Union	53	53	55	46	55	40	53	57	50	38
Walworth	21	12	7	17	19	12	19	11	9	20
Yankton	72	65	80	75	74	67	72	95	82	95
Ziebach	*	*	0	0	3	*	*	0	*	0

Note: *Department of Health policy prohibits publishing vital events in cells with less than three events at a county level.
Source: South Dakota Department of Health, Office of Data, Statistics, and Vital Records

