

Overview

<u>Resident Live Births</u>	
Number of Live Births	12,074
Rate per 1,000 Population	16.0
<u>Infant Deaths</u>	
Number of Infant Deaths	100
Rate per 1,000 Live Births	8.28
<u>Resident Deaths</u>	
Number of Resident Deaths	7,056
Rate per 100,000 Population	934.8
<u>Fetal Deaths</u>	
Number of Fetal Deaths	61
Rate per 1,000 Live Births + Fetal Deaths	5.03
<u>Marriages</u>	
Number of Marriages	6,148
Rate per 1,000 Population	8.1
<u>Divorces</u>	
Number of Divorces	2,459
Rate per 1,000 Population	3.3

This report contains selected health statistics that are widely used by the Department of Health, other government agencies, and the public. This

information has proven to be useful in determining trends in health status, for planning health care services and for making decisions about public health programs. It also fulfills diverse requirements in the business community and academic research.

Vital statistics data are compiled and maintained under the direction of the Administrator of the Office of Data, Statistics, and Vital Records (ODSVR). The data is analyzed by staff from the ODSVR. Data from ODSVR can be found in the following sections: Natality, Infant Mortality, Mortality, Induced Abortion, Marriage and Divorce, Health Status Profiles, and Health Status Maps.

Communicable Disease data are collected, compiled, and analyzed within the Office of Disease Prevention. Data on Communicable Diseases can be found in the Communicable Disease section of the report.

Quick References

Pages

• Tables 2, & 4-7 – Number of Vital Events by County	6-7 and 10-17
• Figures 2, 10, 27 & 29 – Graphs Comparing State and National Rates	22, 44, 92, 93
• Tables 8, 41, 52, 75 & 76 – Tables Comparing State and National Rates	21, 43, 57, 92, 94
• Tables 78 & 79 – Disease Data by Region and Characteristics	100 – 102
• Maps 1 through 29 – Health Status Maps by County	195 - 223

The contacts listed in the Preface welcome suggestions for additional changes that would make the next compilation even more useful to those involved in improving the health of South Dakotans.

Table 1
Selected South Dakota Health Statistics, 2007-2008

EVENT	2008	2007	Percent Change
BIRTHS: Number	12,074	12,253	-1.5
Rate per 1,000 Population	16.0	16.2	-1.2
Birth by Race			
Number of White Births	9,432	9,571	-1.5
White Birth Rate per 1,000	14.1	14.3	-1.4
Number of American Indian Births	2,222	2,286	-2.8
American Indian Birth Rate per 1,000	32.5	33.5	-3.0
Births (12 through 14 years olds)			
Number	13	9	44.4
Rate per 1,000 12 through 14 year olds	0.4	0.2	100.0
Births (15 through 17 year olds)			
Number	345	334	3.3
Rate per 1,000 15 through 17 year olds	9.2	8.9	3.4
Births (15 through 19 year olds)			
Number	1,117	1,189	-6.1
Rate per 1,000 15 through 19 year olds	17.9	19.0	-5.8
Low Birth Weight Babies (Less than 2,500 grams)			
Number	783	853	-8.2
Rate per 1,000 Births	64.9	69.6	-6.8
DEATHS: Number			
Rate per 100,000 Population	7,056	6,800	3.8
Rate per 100,000 Population	934.8	900.8	3.8
Deaths by Race			
Number of White Deaths	6,487	6,239	4.0
White Death Rate per 100,000	969.1	932.0	4.0
Number of American Indian Deaths	531	512	3.7
American Indian Death Rate per 100,000	777.7	749.8	3.7
Deaths (12 through 14 years of age)			
Number	6	8	-25.0
Rate per 100,000 12 through 14 year olds	16.6	22.1	-24.9
Deaths (15 through 17 years of age)			
Number	24	23	-4.3
Rate per 100,000 15 through 17 year olds	63.8	61.1	-4.4
Deaths (15 through 19 year of age)			
Number	47	47	0.0
Rate per 100,000 15 through 19 year olds	75.2	75.2	0.0

Table 1 (continued)
Selected South Dakota Health Statistics, 2007-2008

EVENT	2008	2007	Percent Change
INFANT MORTALITY:			
Number	100	79	26.6
Rate per 1,000 Births	8.28	6.45	28.4
FETAL DEATHS:			
Number	61	54	13.0
Rate per 1,000 Births + Fetal Deaths	5.03	4.39	14.6
MARRIAGES:			
Number	6,148	6,138	0.2
Rate per 1,000 Population	8.1	8.1	0.0
DIVORCES:			
Number	2,459	2,438	0.9
Rate per 1,000 Population	3.3	3.2	3.1
ABORTIONS:			
Number	709	609	16.4
Rate per 1,000 Births	58.7	49.7	18.1

Note: Birth and death data are for South Dakota residents.
 Marriage and divorce data reflect events occurring in South Dakota.
 Abortion data reflect events occurring in South Dakota to South Dakota residents.
 Source: South Dakota Department of Health, Office of Data, Statistics, and Vital Records

Table 2
South Dakota Vital Statistics by County, 2008

	Births		Deaths		Infant Deaths		Fetal Deaths		Marriages		Divorces	
	Number	Rate	Number	Rate	Number	Rate	Number	Rate	Number	Rate	Number	Rate
South Dakota	12,074	16.0	7,056	934.8	100	8.28	61	5.03	6,148	8.1	2,459	3.3
County												
Aurora	36	11.8	30	981.0	*	*	*	*	16	5.2	6	2.0
Beadle	277	16.3	189	1,110.3	*	*	*	*	137	8.0	57	3.3
Bennett	67	18.7	25	699.5	*	*	*	*	16	4.5	*	*
Bon Homme	73	10.1	71	978.0	*	*	*	*	54	7.4	17	2.3
Brookings	401	14.2	213	754.8	5	12.47	*	*	195	6.9	75	2.7
Brown	483	13.6	350	987.0	*	*	7	14.29	225	6.3	103	2.9
Brule	75	14.0	43	801.6	*	*	*	*	52	9.7	13	2.4
Buffalo	52	25.6	20	984.3	*	*	*	*	4	2.0	*	*
Butte	152	16.7	102	1,121.6	*	*	*	*	55	6.0	39	4.3
Campbell	17	9.5	14	785.6	*	*	*	*	7	3.9	*	*
Charles Mix	168	18.0	91	973.3	*	*	*	*	54	5.8	9	1.0
Clark	42	10.1	42	1,013.8	*	*	*	*	16	3.9	6	1.4
Clay	163	12.0	67	494.9	*	*	*	*	90	6.6	34	2.5
Codington	380	14.7	242	934.5	*	*	3	7.83	245	9.5	109	4.2
Corson	89	21.3	36	861.0	*	*	*	*	21	5.0	*	*
Custer	78	10.7	62	852.2	*	*	*	*	123	16.9	23	3.2
Davison	276	14.7	207	1,104.5	3	10.87	*	*	153	8.2	69	3.7
Day	60	9.6	69	1,101.0	*	*	*	*	40	6.4	11	1.8
Deuel	61	13.6	62	1,378.4	*	*	*	*	39	8.7	13	2.9
Dewey	155	26.0	53	887.5	*	*	*	*	21	3.5	*	*
Douglas	29	8.4	44	1,272.4	*	*	*	*	20	5.8	6	1.7
Edmunds	55	12.6	47	1,076.3	*	*	*	*	25	5.7	5	1.1
Fall River	55	7.4	104	1,395.4	*	*	*	*	75	10.1	39	5.2
Faulk	20	7.6	34	1,287.9	*	*	*	*	8	3.0	3	1.1
Grant	69	8.8	80	1,019.5	*	*	*	*	88	11.2	16	2.0
Gregory	40	8.3	89	1,857.3	*	*	*	*	23	4.8	5	1.0
Haakon	21	9.6	23	1,047.4	*	*	*	*	18	8.2	*	*
Hamlin	109	19.7	71	1,281.6	*	*	*	*	32	5.8	5	0.9
Hand	36	9.6	42	1,122.7	*	*	*	*	8	2.1	9	2.4
Hanson	48	15.3	25	796.4	*	*	*	*	8	2.5	5	1.6
Harding	17	12.6	8	591.3	*	*	*	*	*	*	5	3.7
Hughes	225	13.7	143	867.7	*	*	*	*	137	8.3	42	2.5
Hutchinson	85	10.5	123	1,523.2	*	*	*	*	31	3.8	12	1.5

Table 2 (continued)
South Dakota Vital Statistics by County, 2008

County	Births		Deaths		Infant Deaths		Fetal Deaths		Marriages		Divorces	
	Number	Rate	Number	Rate	Number	Rate	Number	Rate	Number	Rate	Number	Rate
Hyde	7	4.2	22	1,316.6	*	*	*	*	5	3.0	*	*
Jackson	74	25.3	30	1,023.9	*	*	*	*	8	2.7	5	1.7
Jerauld	24	10.5	27	1,176.5	*	*	*	*	10	4.4	*	*
Jones	13	10.9	6	502.9	*	*	*	*	6	5.0	*	*
Kingsbury	77	13.2	89	1,530.5	*	*	*	*	36	6.2	8	1.4
Lake	103	9.1	105	931.2	*	*	*	*	71	6.3	28	2.5
Lawrence	257	11.8	196	899.0	*	*	*	*	485	22.2	68	3.1
Lincoln	763	31.6	203	841.2	3	3.93	3	3.92	173	7.2	139	5.8
Lyman	60	15.4	21	539.2	*	*	*	*	17	4.4	7	1.8
McCook	64	11.0	71	1,217.4	*	*	*	*	31	5.3	15	2.6
McPherson	14	4.8	35	1,205.2	*	*	*	*	10	3.4	5	1.7
Marshall	47	10.3	46	1,005.2	*	*	*	*	31	6.8	8	1.7
Meade	372	15.3	220	907.1	5	13.44	3	8.00	188	7.8	93	3.8
Mellette	36	17.3	24	1,152.2	*	*	*	*	18	8.6	*	*
Miner	30	10.4	37	1,282.9	*	*	*	*	8	2.8	6	2.1
Minnehaha	2,841	19.2	1,233	831.5	24	8.45	13	4.56	1,324	8.9	637	4.3
Moody	79	12.0	46	697.5	*	*	*	*	49	7.4	17	2.6
Pennington	1,563	17.6	716	808.4	9	5.76	3	1.92	932	10.5	463	5.2
Perkins	40	11.9	43	1,278.6	*	*	*	*	17	5.1	*	*
Potter	24	8.9	47	1,745.3	*	*	*	*	11	4.1	8	3.0
Roberts	172	17.2	125	1,248.0	8	46.51	*	*	113	11.3	18	1.8
Sanborn	25	9.3	17	635.5	*	*	*	*	9	3.4	5	1.9
Shannon	367	29.4	112	898.4	12	32.70	4	10.78	7	0.6	*	*
Spink	93	12.5	77	1,033.0	*	*	*	*	22	3.0	11	1.5
Stanley	36	13.0	26	938.0	*	*	*	*	16	5.8	4	1.4
Sully	12	7.7	8	514.1	*	*	*	*	6	3.9	*	*
Todd	298	32.9	82	906.1	5	16.78	*	*	24	2.7	*	*
Tripp	70	10.9	66	1,026.4	*	*	*	*	35	5.4	7	1.1
Turner	96	10.8	97	1,096.2	*	*	*	*	37	4.2	24	2.7
Union	159	12.6	113	898.0	*	*	*	*	185	14.7	53	4.2
Walworth	53	8.9	71	1,188.5	*	*	*	*	30	5.0	12	2.0
Yankton	254	11.7	206	951.4	*	*	*	*	190	8.8	65	3.0
Ziebach	37	14.7	18	714.6	*	*	*	*	6	2.4	*	*

Note: Births, deaths, infant deaths, and fetal deaths are by county of residence; marriages and divorces are by county of occurrence.
 Birth, marriage, and divorce rates are per 1,000 population. Death rates are per 100,000 population. Infant mortality rates are per 1,000 live births.
 Fetal mortality rates are per 1,000 live births plus fetal deaths.
 *Department of Health policy prohibits publishing vital events in cells with less than three events at a county level.

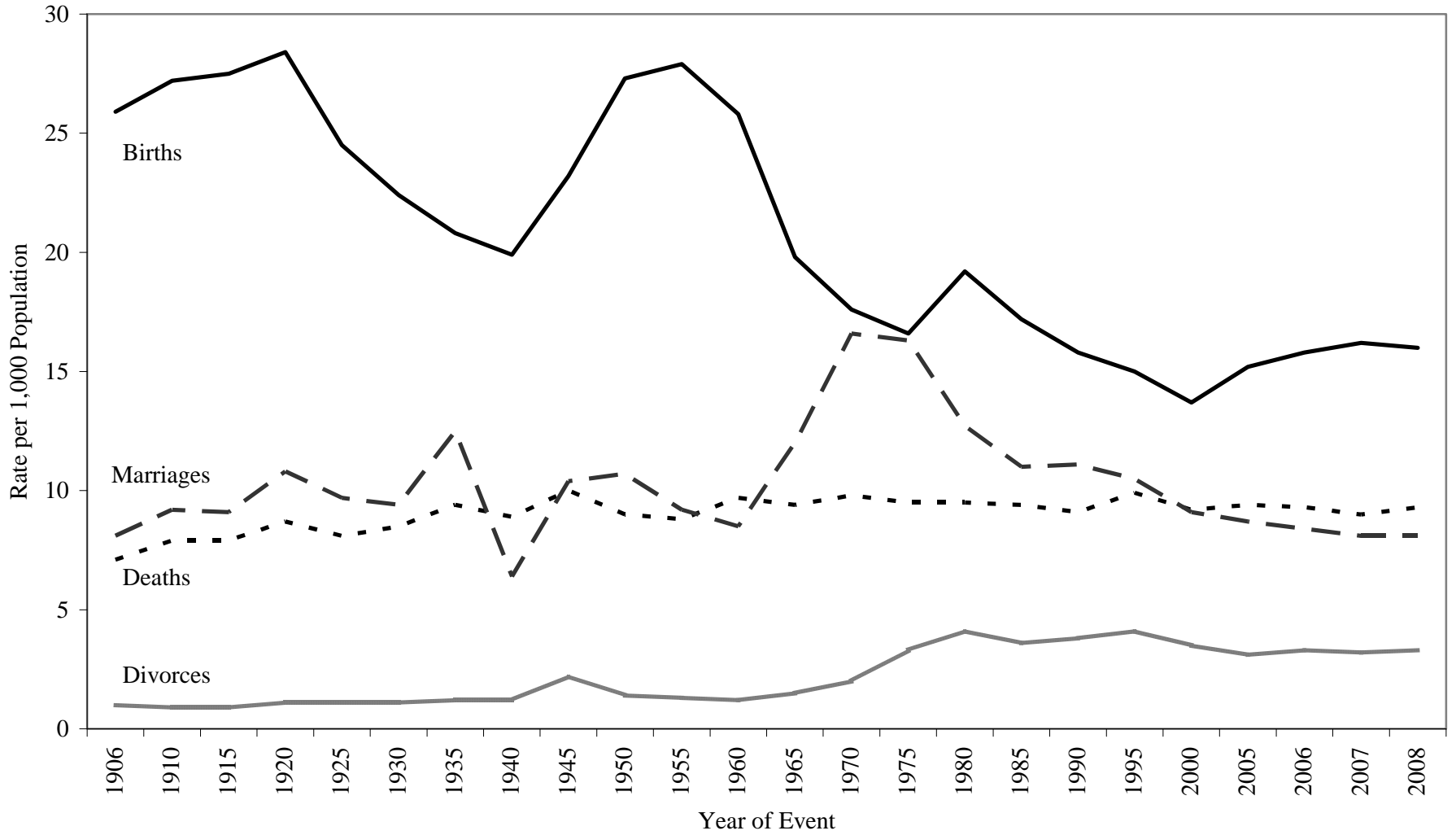
Source: South Dakota Department of Health, Office of Data, Statistics, and Vital Records

**Table 3
Selected Records in Vital Statistics,
South Dakota, 2008**

NATALITY			
Oldest Father:	62	Oldest Mother:	55
Youngest Father:	15	Youngest Mother:	12
Smallest Live Birth:	0 lb. 4.5 oz.		
Largest Live Birth:	13 lbs. 10 oz.		
Most Popular Names for Infants			
Boy's Names	Number	Girl's Names	Number
Jacob	53	Emma	71
Noah	53	Olivia	62
Mason	52	Addison	52
Logan	51	Grace	50
Carter	50	Alexis	48
Jackson	50	Ava	43
Isaac	49	Ella	42
Ethan	46	Isabella	41
Samuel	44	Elizabeth	37
Benjamin	43	Madison	34
Gabriel	43		
Joseph	43		
MORTALITY			
Oldest Male Decedent:	106	Oldest Female Decedent:	109
MARRIAGE			
Oldest Groom:	89	Oldest Bride:	80
Youngest Groom:	16	Youngest Bride:	16
DIVORCE			
Longest Duration of a Marriage Ending in a Divorce:	61 Years		

Source: South Dakota Department of Health, Office of Data, Statistics, and Vital Records

Figure 1
Birth, Death, Marriage, and Divorce Rates for
South Dakota, 1906-2008



Source: South Dakota Department of Health, Office of Data, Statistics, and Vital Records

Table 4
South Dakota Resident Births by Resident County and Year of Birth, 1999-2008

	Year of Birth									
	2008	2007	2006	2005	2004	2003	2002	2001	2000	1999
Total	12,074	12,253	11,914	11,466	11,339	11,022	10,698	10,475	10,346	10,516
County										
Aurora	36	31	33	24	32	35	22	28	33	33
Beadle	277	261	201	177	195	174	192	198	172	187
Bennett	67	55	61	64	67	80	61	70	59	61
Bon Homme	73	70	60	72	53	65	51	57	50	75
Brookings	401	378	352	355	321	309	308	337	323	326
Brown	483	537	499	430	466	463	446	418	487	476
Brule	75	85	60	74	59	63	63	63	54	72
Buffalo	52	64	68	55	55	65	54	50	29	40
Butte	152	146	140	118	133	113	121	119	128	120
Campbell	17	10	11	6	9	7	13	16	16	18
Charles Mix	168	151	162	154	177	138	150	162	142	171
Clark	42	43	42	36	51	35	41	38	40	51
Clay	163	151	162	139	147	155	162	154	175	146
Codington	380	436	401	387	394	362	314	332	370	380
Corson	89	98	92	93	83	82	91	71	97	80
Custer	78	89	77	85	66	71	70	60	51	58
Davison	276	294	271	293	309	250	246	247	246	247
Day	60	73	66	68	64	66	63	62	68	68
Deuel	61	45	67	51	63	53	44	45	44	47
Dewey	155	162	155	154	160	156	149	150	129	129
Douglas	29	34	27	30	35	37	32	34	36	32
Edmunds	55	36	41	42	51	35	40	55	36	51
Fall River	55	54	71	62	76	74	59	58	62	73
Faulk	20	21	25	26	24	25	31	26	19	23
Grant	69	89	88	68	67	72	94	83	74	89
Gregory	40	47	37	44	46	38	30	46	39	38
Haakon	21	22	17	20	19	14	25	17	22	27
Hamlin	109	103	98	93	89	110	88	90	83	75
Hand	36	40	37	30	32	31	24	37	24	38
Hanson	48	42	61	47	50	60	45	67	59	54
Harding	17	12	11	9	12	8	18	15	15	12
Hughes	225	238	231	227	195	213	190	194	197	224
Hutchinson	85	60	74	88	72	85	81	89	89	95

Table 4 (continued)
South Dakota Resident Births by Resident County and Year of Birth, 1999-2008

County	Year of Birth									
	2008	2007	2006	2005	2004	2003	2002	2001	2000	1999
Hyde	7	9	13	15	24	21	18	14	18	24
Jackson	74	81	61	62	67	53	62	51	53	60
Jerauld	24	19	34	24	23	27	17	24	17	24
Jones	13	14	12	17	12	13	8	14	4	10
Kingsbury	77	54	55	52	52	54	49	53	57	52
Lake	103	144	137	123	135	122	109	118	110	123
Lawrence	257	290	290	239	265	237	245	239	214	204
Lincoln	763	785	746	687	584	504	426	458	367	367
Lyman	60	59	57	72	80	72	83	67	69	72
McCook	64	79	60	79	86	90	73	78	71	70
McPherson	14	18	28	16	20	20	37	22	26	30
Marshall	47	54	52	50	53	39	28	40	34	40
Meade	372	350	377	390	341	344	407	430	311	368
Mellette	36	50	46	40	43	37	31	31	29	34
Miner	30	27	28	31	28	26	24	24	34	38
Minnehaha	2,841	2,746	2,624	2,587	2,548	2,485	2,482	2,302	2,312	2,339
Moody	79	88	91	92	97	80	74	87	74	82
Pennington	1,563	1,599	1,584	1,564	1,523	1,552	1,385	1,334	1,413	1,316
Perkins	40	24	31	34	29	24	37	23	28	29
Potter	24	33	12	27	26	20	24	30	28	24
Roberts	172	170	160	175	159	154	125	155	142	123
Sanborn	25	37	21	21	29	27	25	24	30	31
Shannon	367	396	419	372	347	385	366	336	343	338
Spink	93	75	74	78	84	79	91	73	88	75
Stanley	36	37	45	39	39	43	37	31	39	27
Sully	12	23	24	21	25	17	24	20	15	14
Todd	298	275	283	257	253	257	281	256	244	227
Tripp	70	67	87	64	84	65	73	68	79	73
Turner	96	97	104	89	80	86	83	85	87	104
Union	159	191	186	173	161	159	201	147	182	178
Walworth	53	63	70	64	63	78	68	66	69	72
Yankton	254	283	267	242	266	274	237	244	240	298
Ziebach	37	38	38	49	41	34	50	43	51	34

Note: *Department of Health policy prohibits publishing vital events in cells with less than three events at a county level.

Failure of births to add to the total is due to unknown county.

Source: South Dakota Department of Health, Office of Data, Statistics, and Vital Records

Table 5
South Dakota Resident Deaths by Resident County and Year of Death, 1999-2008

	Year of Death									
	2008	2007	2006	2005	2004	2003	2002	2001	2000	1999
Total	7,056	6,800	7,038	7,074	6,811	7,109	6,886	6,915	7,014	6,941
County										
Aurora	30	31	27	35	33	39	43	50	38	40
Beadle	189	193	191	212	199	188	189	196	216	179
Bennett	25	39	23	25	31	33	34	29	27	40
Bon Homme	71	100	79	80	69	82	79	93	87	86
Brookings	213	183	191	149	187	190	179	186	190	176
Brown	350	357	354	333	334	355	341	366	369	369
Brule	43	52	64	59	50	62	51	52	48	57
Buffalo	20	18	17	15	18	13	14	22	30	21
Butte	102	110	95	106	82	102	106	83	92	87
Campbell	14	9	18	19	12	13	14	19	14	13
Charles Mix	91	92	96	117	96	109	95	91	110	131
Clark	42	34	46	68	44	44	45	50	38	58
Clay	67	83	91	82	100	98	91	88	113	83
Codington	242	253	230	234	222	217	218	239	217	244
Corson	36	38	44	38	45	36	35	37	46	36
Custer	62	88	76	82	67	60	75	86	73	80
Davison	207	203	187	168	208	207	192	175	189	190
Day	69	74	94	82	91	102	96	95	88	91
Deuel	62	51	66	49	60	51	46	43	47	53
Dewey	53	57	53	66	71	49	50	40	58	52
Douglas	44	42	33	52	38	40	46	40	47	40
Edmunds	47	47	57	52	57	45	48	60	72	53
Fall River	104	106	107	114	111	115	116	115	112	99
Faulk	34	30	38	19	29	31	29	34	26	31
Grant	80	83	94	95	102	93	92	91	105	100
Gregory	89	54	74	65	66	72	72	65	94	68
Haakon	23	26	32	25	26	26	27	19	43	23
Hamlin	71	80	76	79	74	61	80	62	61	73
Hand	42	36	44	37	50	49	48	46	46	40
Hanson	25	20	19	26	15	15	20	28	19	16
Harding	8	6	8	11	6	12	8	7	7	11
Hughes	143	130	158	152	118	150	163	152	142	114
Hutchinson	123	92	110	109	129	133	131	148	110	133

Table 5 (continued)
South Dakota Resident Deaths by Resident County and Year of Death, 1999-2008

County	Year of Death									
	2008	2007	2006	2005	2004	2003	2002	2001	2000	1999
Hyde	22	25	23	21	25	28	21	24	21	26
Jackson	30	37	39	26	33	26	31	19	21	27
Jerauld	27	25	30	27	31	28	29	33	30	24
Jones	6	14	6	9	12	11	3	8	10	7
Kingsbury	89	76	78	83	93	97	105	88	97	84
Lake	105	93	116	91	102	104	103	126	102	105
Lawrence	196	201	234	187	196	201	201	183	191	169
Lincoln	203	191	226	229	211	182	171	152	157	150
Lyman	21	25	28	29	30	34	33	35	36	36
McCook	71	76	71	70	75	72	73	67	53	73
McPherson	35	34	36	49	37	39	35	34	51	46
Marshall	46	46	53	60	49	46	61	69	48	50
Meade	220	214	223	236	228	182	174	173	173	156
Mellette	24	22	16	24	32	22	20	17	25	26
Miner	37	32	37	39	32	34	42	37	40	36
Minnehaha	1,233	1,151	1,150	1,146	1,016	1,156	1,054	1,112	1,082	1,112
Moody	46	56	69	66	56	60	49	58	70	73
Pennington	716	616	645	693	620	732	704	664	654	690
Perkins	43	52	46	41	36	39	34	45	49	50
Potter	47	32	37	44	33	49	47	37	42	43
Roberts	125	101	94	128	126	113	117	107	127	126
Sanborn	17	21	29	38	24	40	22	30	26	24
Shannon	112	117	121	123	133	129	124	110	111	118
Spink	77	85	75	79	68	89	85	74	89	86
Stanley	26	7	25	19	14	11	20	21	19	16
Sully	8	9	11	11	18	9	9	7	11	13
Todd	82	81	73	63	79	79	74	68	81	80
Tripp	66	68	81	85	65	80	87	89	80	60
Turner	97	105	104	109	100	118	103	123	118	122
Union	113	101	100	93	95	88	92	116	115	113
Walworth	71	58	86	92	98	76	83	99	87	101
Yankton	206	197	175	199	200	225	193	173	204	201
Ziebach	18	15	9	10	4	18	14	10	20	11

Note: *Department of Health policy prohibits publishing vital events in cells with less than three events at a county level.

Source: South Dakota Department of Health, Office of Data, Statistics, and Vital Records

Table 6
Marriages Occurring in South Dakota by County of Occurrence and Year of Marriage, 1999-2008

	Year of Marriage									
	2008	2007	2006	2005	2004	2003	2002	2001	2000	1999
Total	6,148	6,138	6,303	6,551	6,485	6,427	6,585	6,719	6,882	6,863
County										
Aurora	16	13	28	18	20	15	18	21	18	28
Beadle	137	129	117	118	135	125	106	118	143	131
Bennett	16	22	26	15	16	17	16	19	18	29
Bon Homme	54	40	42	44	46	34	51	41	38	48
Brookings	195	202	178	246	210	209	212	189	212	226
Brown	225	277	270	244	281	285	288	245	261	271
Brule	52	42	63	57	68	50	54	62	58	69
Buffalo	4	8	*	*	4	4	7	*	5	6
Butte	55	62	51	66	44	51	67	78	59	63
Campbell	7	6	*	15	7	8	5	6	9	7
Charles Mix	54	66	55	53	71	48	79	57	54	62
Clark	16	24	18	20	24	18	24	18	17	26
Clay	90	101	105	107	92	104	93	100	74	70
Codington	245	262	290	261	285	302	295	274	304	298
Corson	21	22	19	27	22	26	36	29	30	24
Custer	123	113	101	109	107	103	102	102	128	116
Davison	153	162	167	164	146	161	164	183	152	164
Day	40	33	35	41	36	38	51	39	39	46
Deuel	39	30	34	30	21	24	36	29	22	33
Dewey	21	21	12	16	13	25	25	20	19	22
Douglas	20	20	21	24	17	15	22	23	19	18
Edmunds	25	24	11	16	25	16	18	20	33	21
Fall River	75	68	68	85	65	66	74	75	44	69
Faulk	8	10	5	17	16	19	8	16	15	14
Grant	88	75	69	84	80	81	81	110	92	92
Gregory	23	23	34	32	30	32	32	32	32	30
Haakon	18	12	14	14	16	13	12	15	9	18
Hamlin	32	36	37	32	39	39	44	30	37	36
Hand	8	19	16	36	16	17	23	18	17	20
Hanson	8	12	21	16	22	11	12	19	12	15
Harding	*	3	10	0	6	9	9	6	9	4
Hughes	137	120	129	136	134	144	124	120	153	119
Hutchinson	31	36	37	40	49	54	33	44	32	63

Table 6 (continued)
Marriages Occurring in South Dakota by County of Occurrence and Year of Marriage, 1999-2008

County	Year of Marriage									
	2008	2007	2006	2005	2004	2003	2002	2001	2000	1999
Hyde	5	4	7	5	5	13	8	8	6	7
Jackson	8	9	12	11	14	15	8	14	16	13
Jerauld	10	12	8	12	13	20	12	12	20	16
Jones	6	*	7	4	10	5	5	9	*	8
Kingsbury	36	28	37	36	42	30	41	47	37	33
Lake	71	98	97	77	77	77	80	74	76	67
Lawrence	485	485	532	502	466	421	400	446	483	437
Lincoln	173	157	158	149	160	106	128	117	123	114
Lyman	17	29	23	26	18	16	20	18	11	12
McCook	31	37	34	38	29	41	33	44	43	34
McPherson	10	5	9	12	9	14	8	18	18	15
Marshall	31	19	33	25	29	41	27	28	32	24
Meade	188	219	227	272	307	270	261	263	335	290
Mellette	18	28	22	25	28	33	29	25	21	36
Miner	8	11	7	16	11	12	19	13	17	17
Minnehaha	1,324	1,254	1,336	1,363	1,276	1,268	1,325	1,281	1,372	1,308
Moody	49	36	61	55	47	31	34	47	51	44
Pennington	932	894	883	977	998	999	1,048	1,017	1,083	1,084
Perkins	17	24	18	25	22	25	12	19	11	10
Potter	11	21	13	12	17	11	16	17	22	20
Roberts	113	92	124	107	113	142	132	149	148	141
Sanborn	9	8	10	13	11	18	12	4	11	16
Shannon	7	8	6	12	3	5	3	16	15	12
Spink	22	35	34	26	27	44	37	45	43	48
Stanley	16	10	17	21	28	19	20	19	17	22
Sully	6	7	3	6	9	3	11	5	4	11
Todd	24	22	19	21	18	23	21	20	20	34
Tripp	35	40	35	42	31	39	55	57	49	63
Turner	37	37	38	47	49	54	41	44	45	53
Union	185	191	183	203	228	255	286	409	349	349
Walworth	30	30	34	27	35	38	27	40	32	32
Yankton	190	189	185	192	186	171	194	229	199	229
Ziebach	6	4	4	7	6	5	11	5	7	6

Note: *Department of Health policy prohibits publishing vital events in cells with less than three events at a county level.
Source: South Dakota Department of Health, Office of Data, Statistics, and Vital Records

Table 7
Divorces Occurring in South Dakota by County of Occurrence and Year of Divorce, 1999-2008

	Year of Divorce									
	2008	2007	2006	2005	2004	2003	2002	2001	2000	1999
Total	2,459	2,438	2,465	2,354	2,358	2,502	2,561	2,522	2,678	2,750
County										
Aurora	6	8	4	7	5	6	6	8	4	7
Beadle	57	59	55	39	54	42	50	41	64	66
Bennett	*	7	*	4	4	7	7	7	7	9
Bon Homme	17	19	19	17	18	10	16	12	11	30
Brookings	75	65	79	75	72	74	98	76	104	89
Brown	103	114	110	105	133	110	125	110	148	121
Brule	13	14	10	17	15	9	13	13	13	21
Buffalo	*	3	*	*	0	*	*	*	*	*
Butte	39	37	34	43	41	45	46	46	45	49
Campbell	*	*	4	0	*	*	3	5	3	0
Charles Mix	9	9	12	5	12	15	18	12	12	5
Clark	6	6	11	11	9	12	11	6	14	7
Clay	34	34	31	40	41	26	37	36	45	45
Codington	109	102	91	96	84	104	97	84	91	106
Corson	*	0	*	3	*	*	0	*	0	7
Custer	23	28	25	32	28	29	28	29	30	40
Davison	69	70	72	60	60	68	73	67	64	64
Day	11	7	19	12	10	13	11	13	13	11
Deuel	13	10	12	11	9	10	6	8	14	13
Dewey	*	0	*	*	6	4	5	*	5	3
Douglas	6	7	3	4	9	3	8	9	4	11
Edmunds	5	8	11	10	6	8	7	11	6	11
Fall River	39	17	33	27	28	23	29	31	15	51
Faulk	3	*	*	*	3	5	4	3	5	3
Grant	16	18	28	11	16	38	23	25	21	22
Gregory	5	8	13	13	9	8	12	15	12	9
Haakon	*	5	*	7	6	6	6	4	8	*
Hamlin	5	9	10	15	8	18	13	14	15	13
Hand	9	7	5	5	3	6	4	10	8	5
Hanson	5	8	3	3	5	9	8	5	3	4
Harding	5	*	0	*	4	3	5	5	4	4
Hughes	42	66	75	60	49	63	74	70	54	65
Hutchinson	12	0	3	16	15	13	10	13	13	15

Table 7 (continued)
Divorces Occurring in South Dakota by County of Occurrence and Year of Divorce, 1999-2008

County	Year of Divorce									
	2008	2007	2006	2005	2004	2003	2002	2001	2000	1999
Hyde	*	*	4	*	*	*	3	6	*	3
Jackson	5	*	9	*	8	*	4	3	*	5
Jerauld	*	*	3	0	*	8	3	3	7	5
Jones	*	3	*	0	*	*	4	5	*	*
Kingsbury	8	6	16	18	13	18	17	17	20	12
Lake	28	22	26	28	26	17	24	26	31	17
Lawrence	68	77	90	83	102	100	118	82	85	109
Lincoln	139	117	111	79	80	94	69	59	51	48
Lyman	7	3	9	*	3	10	4	3	8	7
McCook	15	19	13	15	13	15	9	7	7	20
McPherson	5	5	6	4	*	5	*	6	6	*
Marshall	8	8	11	10	7	10	11	15	14	16
Meade	93	102	78	120	97	112	107	121	111	106
Mellette	*	*	*	3	6	3	5	3	7	*
Miner	6	6	9	6	3	3	7	5	9	4
Minnehaha	637	640	596	549	576	595	581	636	649	660
Moody	17	14	15	12	17	17	16	15	21	15
Pennington	463	431	436	400	423	442	455	456	511	523
Perkins	*	0	6	3	12	8	8	3	10	5
Potter	8	7	3	9	0	3	5	7	9	8
Roberts	18	17	21	26	12	19	12	22	21	19
Sanborn	5	4	7	4	3	3	7	6	7	7
Shannon	*	4	*	*	*	*	*	0	0	5
Spink	11	8	16	19	15	18	20	30	26	22
Stanley	4	8	11	4	9	8	5	11	15	17
Sully	*	5	3	7	3	6	4	5	3	0
Todd	*	3	6	6	3	5	4	6	5	3
Tripp	7	12	17	11	11	18	20	11	14	16
Turner	24	19	19	31	25	22	19	19	18	27
Union	53	55	46	55	40	53	57	50	38	54
Walworth	12	7	17	19	12	19	11	9	20	14
Yankton	65	80	75	74	67	72	95	82	95	88
Ziebach	*	0	0	3	*	*	0	*	0	*

Note: *Department of Health policy prohibits publishing vital events in cells with less than three events at a county level.

Source: South Dakota Department of Health, Office of Data, Statistics, and Vital Records

