

# SD 2017/2018 Influenza Weekly Summary

## Week Ending December 23 (Week 51)

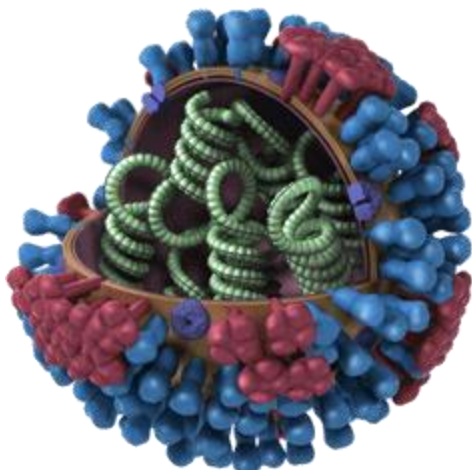


SOUTH DAKOTA  
DEPARTMENT OF HEALTH

Lab Confirmed Cases	Dec 17-23	Season to Date
Type A, H1	0	0
Type A, H3	13	69
Type A, Unspecified	98	315
Type B Unspecified	10	33
B Yamagata	0	4
B Victoria	0	0
<b>Total</b>	<b>121</b>	<b>421</b>

Rapid Antigen Tests (45) sites reporting	Dec 17-23	Season to Date
<b>Total Tested</b>	<b>702</b>	<b>6,294</b>
<b>Total Positive</b>	<b>122</b> <b>(103A/19B)</b>	<b>556</b> <b>(460A/96B)</b>
<b>% Rapid Antigen Tests Positive</b>	<b>17.4%</b>	<b>8.8%</b>

	Dec 17-23	Season to Date
<b>Hospitalizations</b>	<b>19</b>	<b>68</b>
<b>Deaths</b>	<b>1</b>	<b>2</b>



3D Influenza Virus

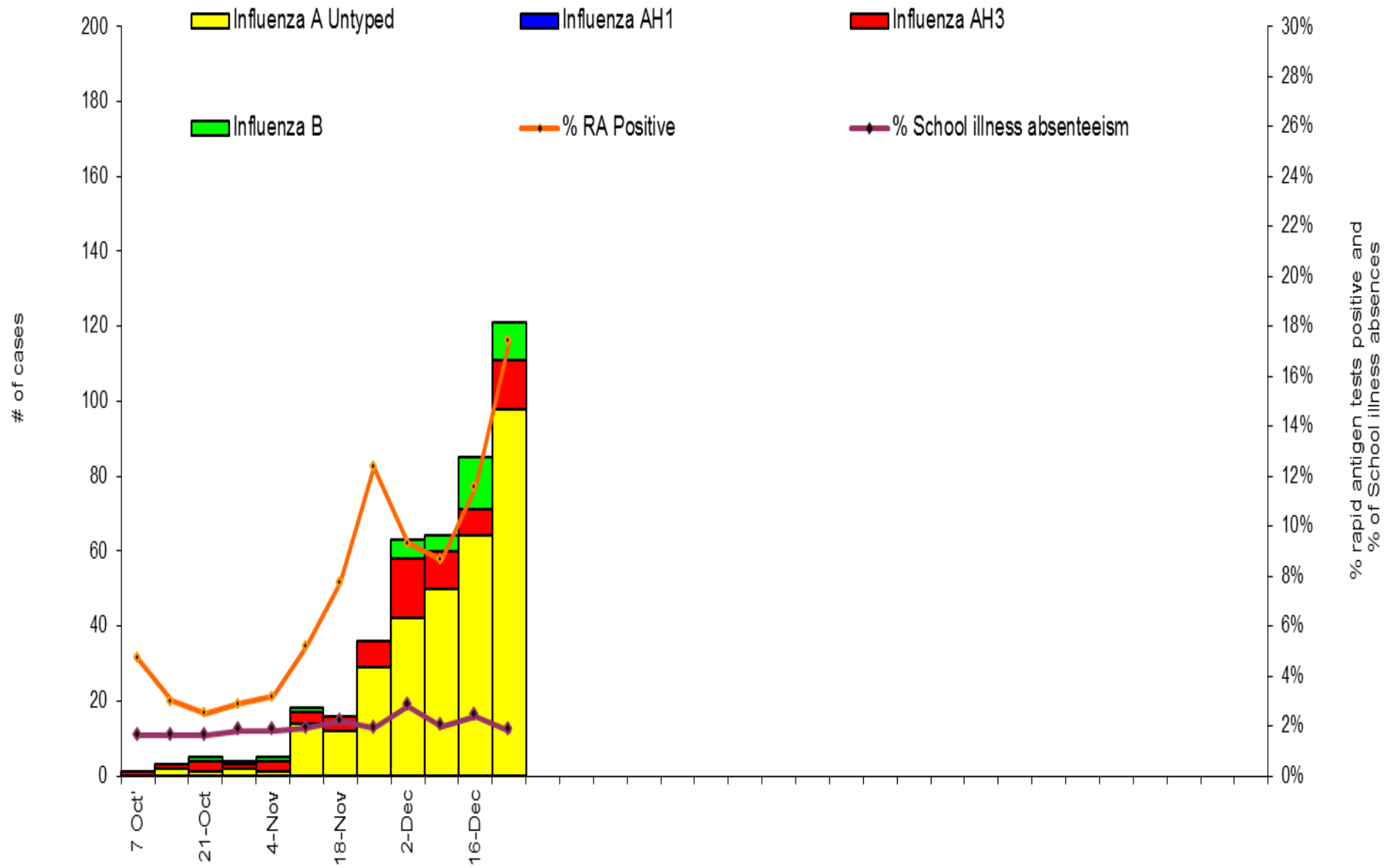
**SD Influenza Geographic: Widespread**  
**SD Influenza Severity : Low**

**US Influenza Activity:** <http://www.cdc.gov/flu/weekly/fluactivitysurv.htm>

**International Flu Activity:** <http://www.cdc.gov/flu/weekly/intsurv.htm>

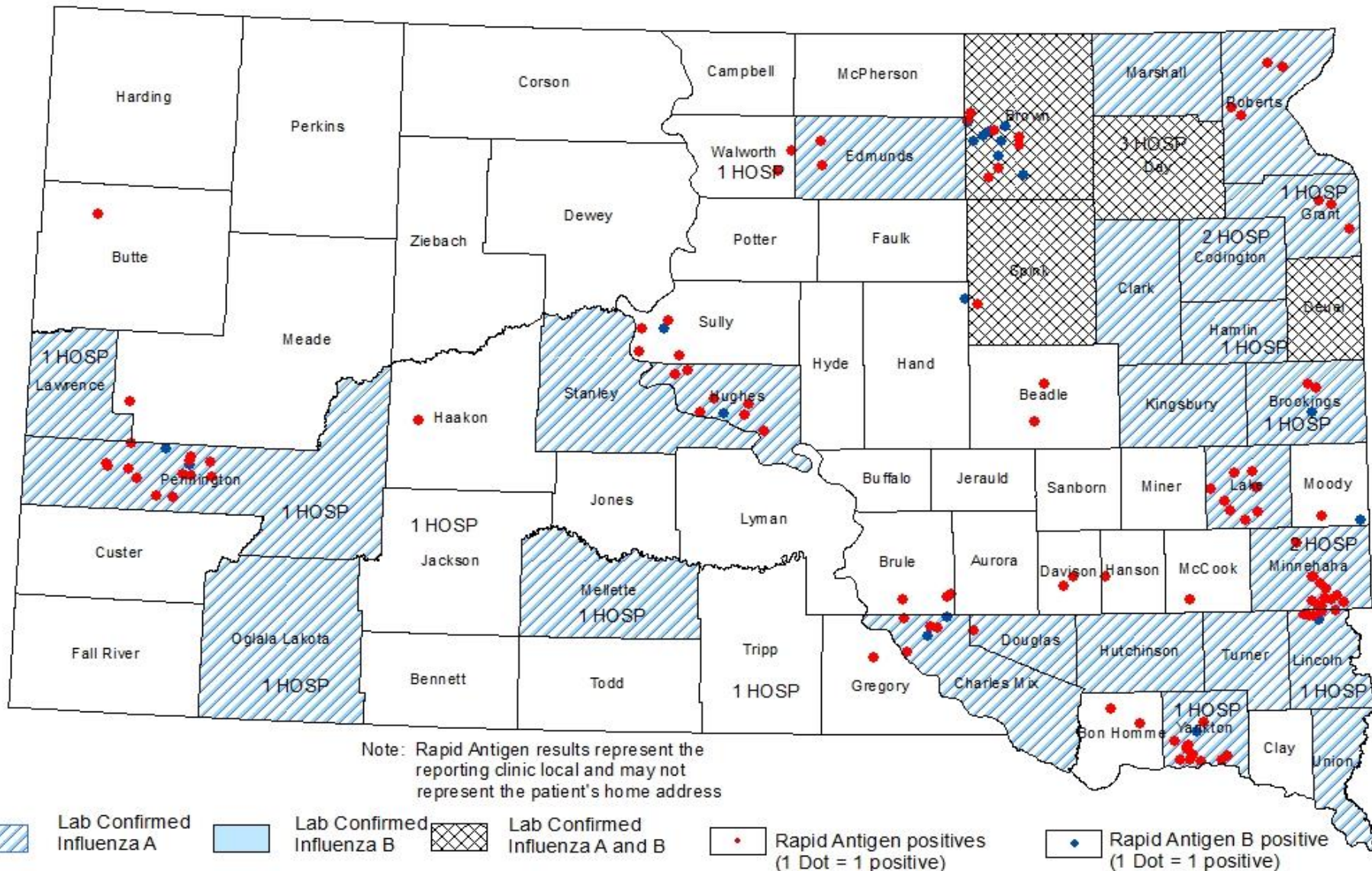
**South Dakota Influenza information:**  
<http://doh.sd.gov/diseases/infectious/flu/>

**2017-2018 Influenza Season Lab Confirmed Influenza cases\*,  
 % Rapid Antigen Positive, & % School Absenteeism SD  
 \* Confirmed by Culture, PCR, or DFA**



# SD 2017/18 Influenza Weekly Summary

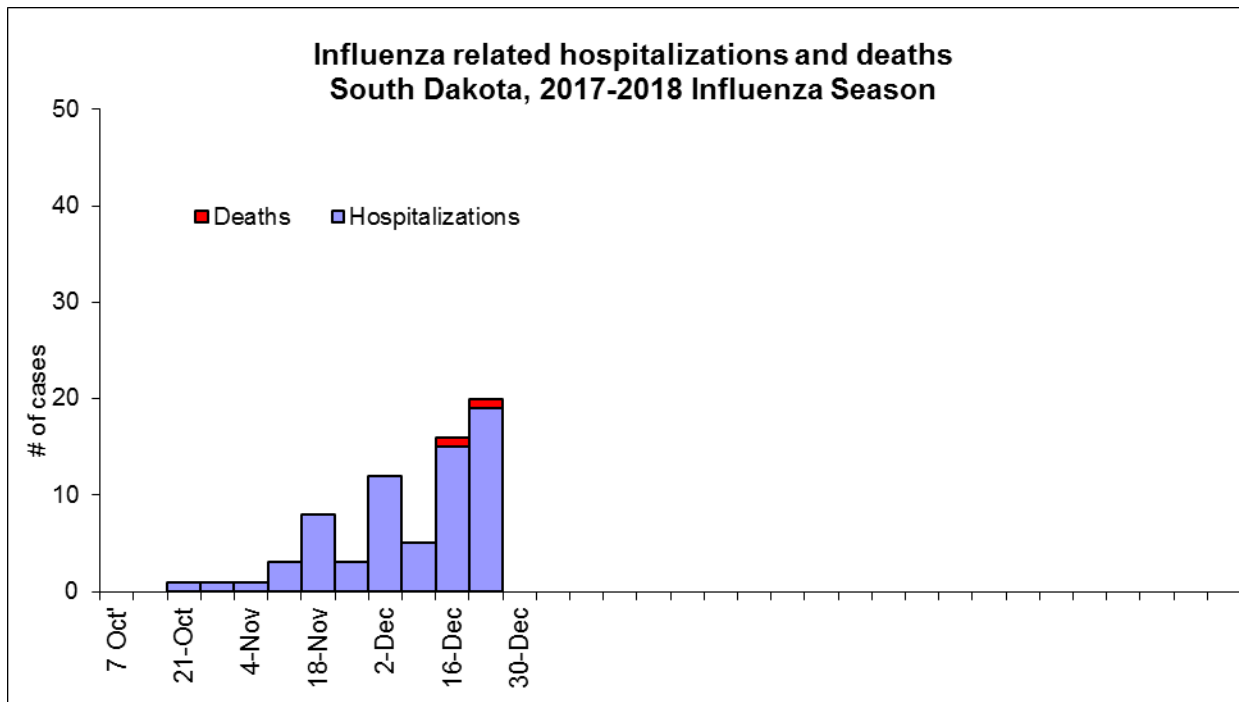
## Week Ending December 23, 2017 (Provisional Data)



**Age distribution of influenza-associated deaths and hospitalizations, and confirmed\* cases, South Dakota** (cumulative to-date for 2017-2018 season).

Age Group	Deaths (%)	Hospitalized (%)	Confirmed* cases (%)
0-4 yrs.	0	2 (3%)	42 (10%)
5-18 yrs.	0	2 (3%)	93 (22%)
19-49 yrs.	0	6 (9%)	102 (24%)
50-64 yrs.	0	8 (12%)	63 (15%)
>64 yrs.	2 (100%)	50 (74%)	121 (29%)
<b>TOTAL</b>	<b>2</b>	<b>68</b>	<b>421</b>

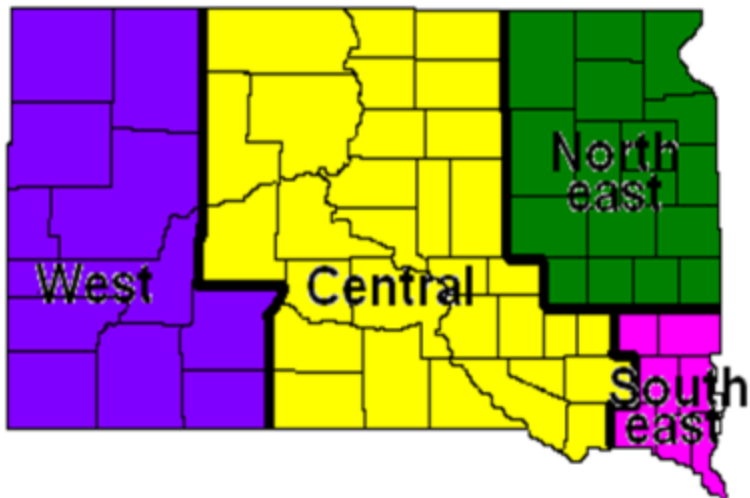
\* Confirmed by PCR, culture or DFA



# SD K-12 School Absenteeism due to illness

Region	All	W	C	NE	SE
# Schools Reporting	56	6	14	17	19
% Absent due to illness	1.8%	1.8%	2.1%	1.8%	1.6%

5 schools had > 5% absent due to illness and the range was 0-10%

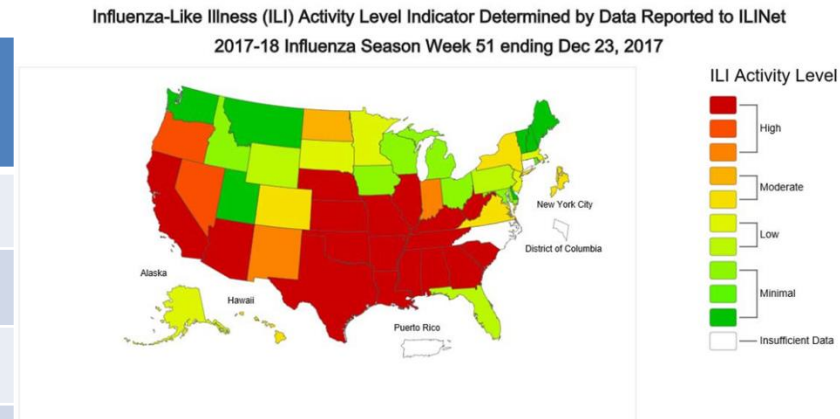


# ILInet Surveillance

- ILInet: outpatient visits to providers are reported, including total number of patient visits and number of patients with Influenza Like Illness (ILI).
  - ILI defined as fever  $\geq 100^{\circ}\text{F}$ , PLUS cough and/or sore throat (Regional baseline 1.4%)
- SD ILInet providers: Aberdeen (2); Beresford; Brandon; Brookings (2); Canton; Chamberlain; Custer; Ipswich; Lead-Deadwood; Kennebec; Miller; Milbank; Mitchell (2); Pierre; Rapid City; Redfield; Sioux Falls (10); Spearfish; Sturgis; Vermillion; Watertown; and Winner

## SD ILInet Data for past 5 Weeks

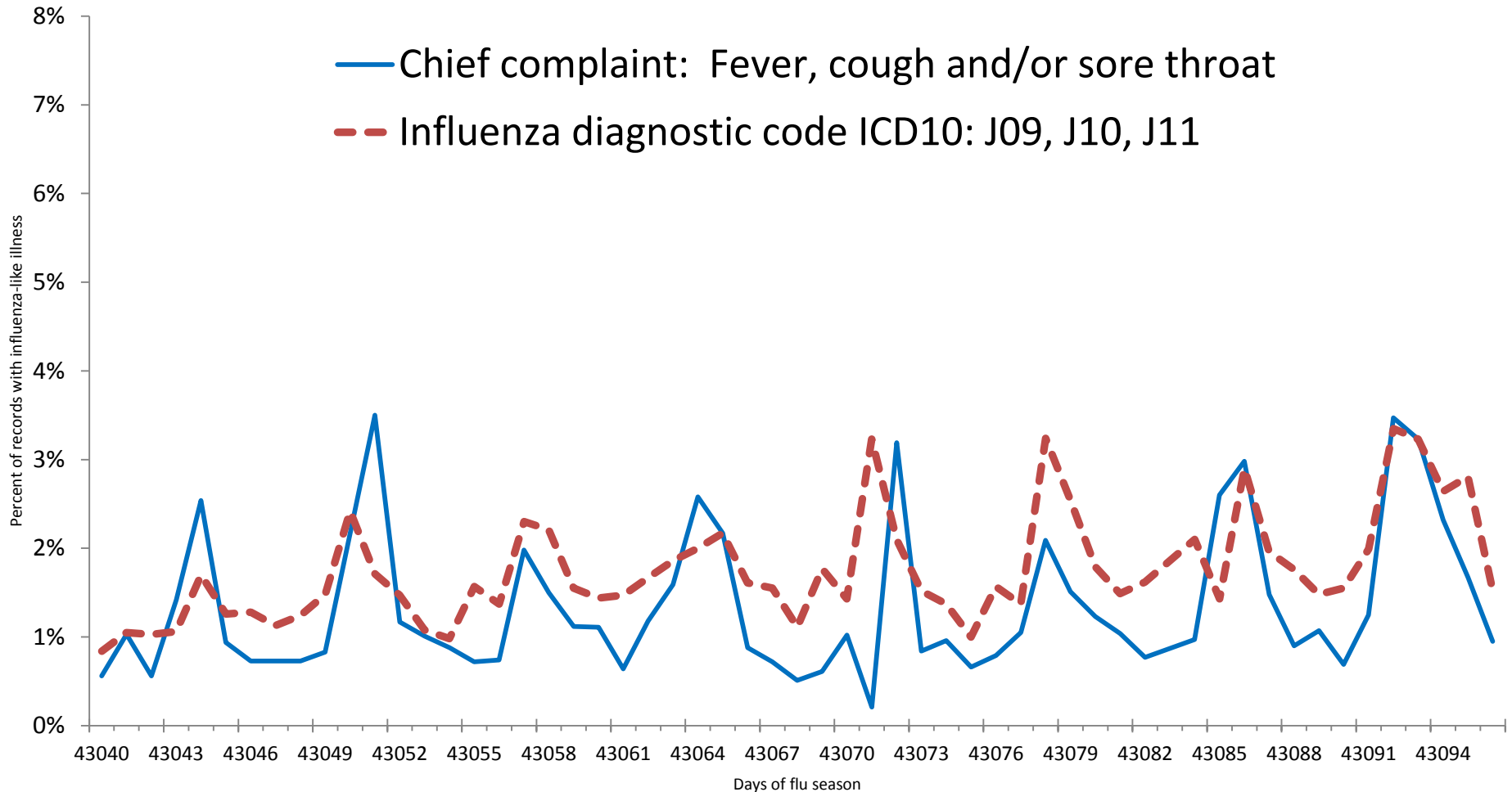
Week Ending	# ILI Patients by Age Group					Total ILI	Total Patient Visits	% ILI
	0-4	5-24	25-49	50-64	>64			
11/25	77	56	31	12	22	198	8,969	2.21%
12/2	72	97	27	16	18	230	10,762	2.14%
12/9	77	79	30	14	18	218	10,143	2.15%
12/16	84	67	78	7	13	198	9,278	2.13%
12/23	79	68	44	22	18	231	8,938	5.58%



# Influenza-like illness

## Daily Syndromic Surveillance\*

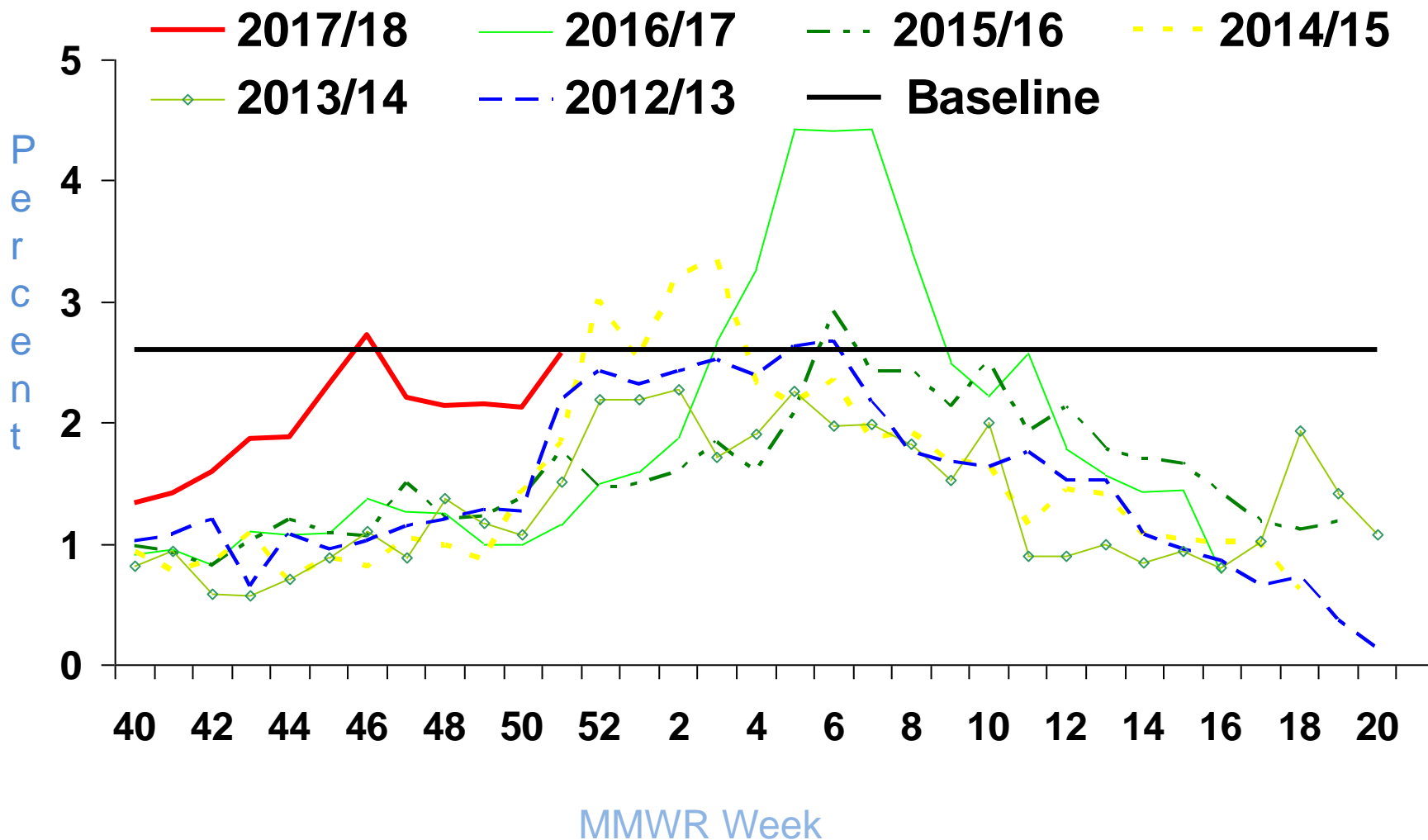
Criteria: Influenza-like illness (ILI) Fever plus cough and/or sore throat



\*Syndromic surveillance data is collected from 160 healthcare facilities in South Dakota

# South Dakota ILINet Weekly Surveillance Percentage, 2012/13 to 2017/18 Influenza Seasons

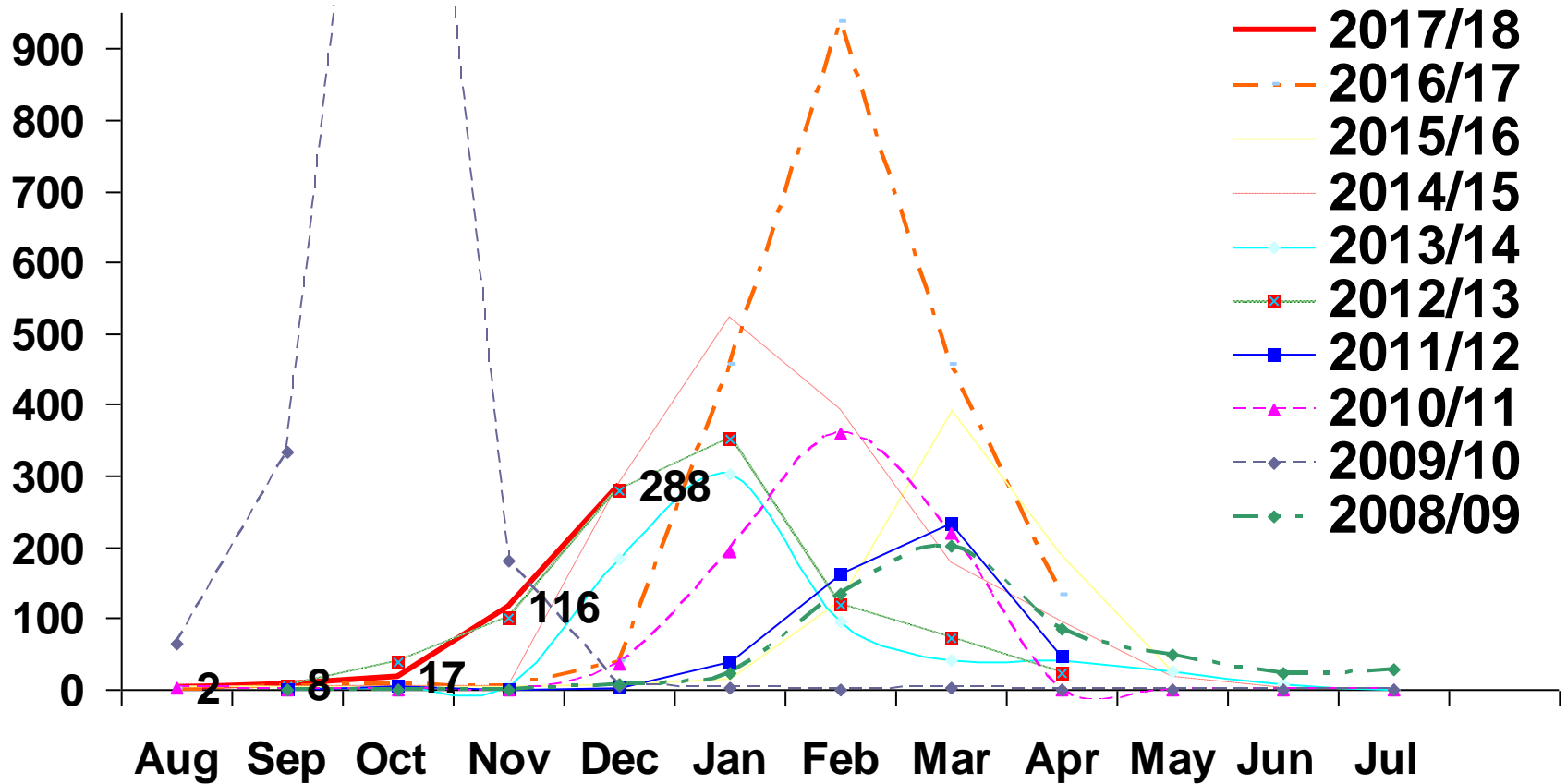
*MMWR Week 51 = 2.58%      HHS Region 8 Baseline = 2.6%*



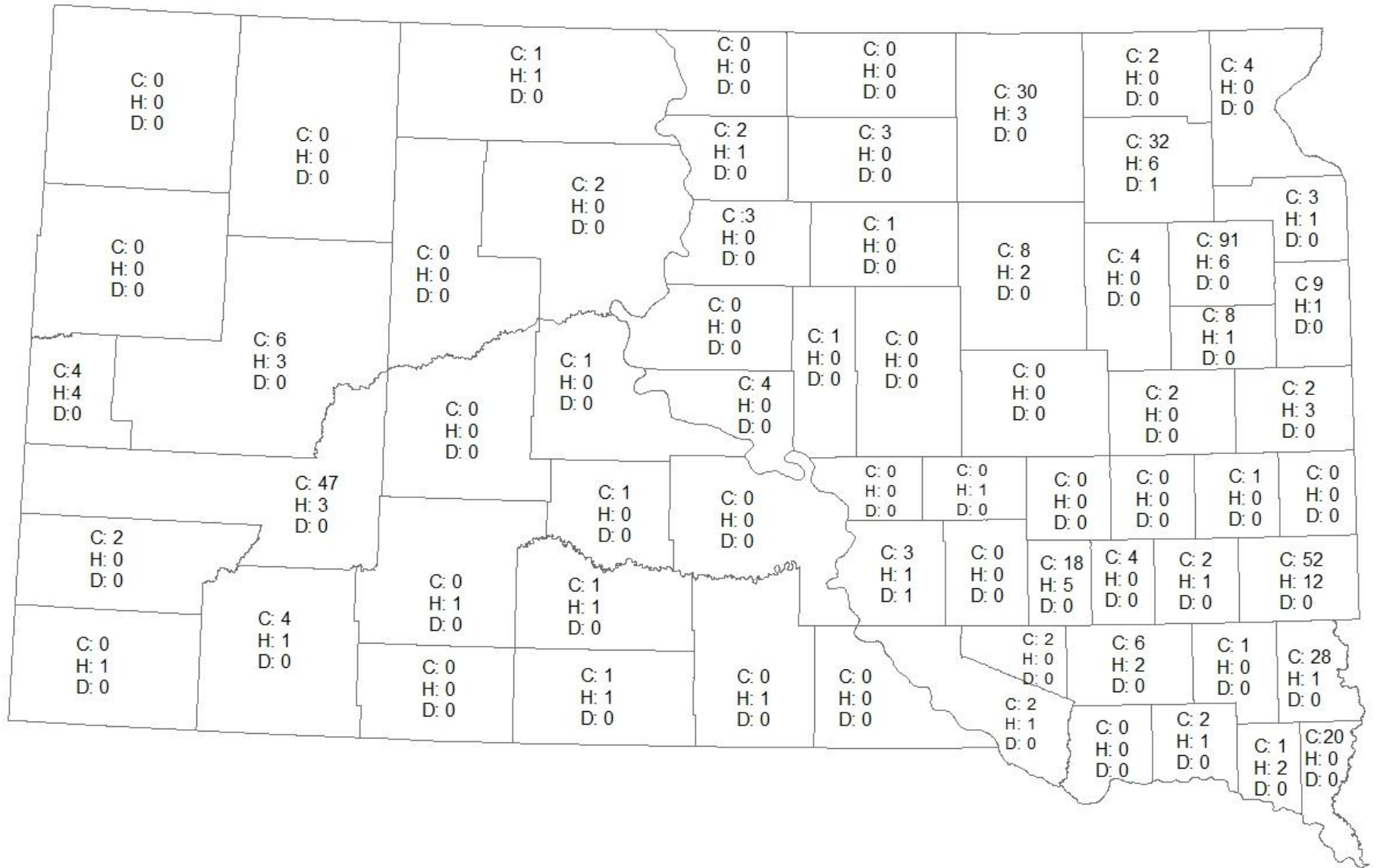


# SD Influenza Confirmed Cases, 2008-2018

Note: 2017-18 data are provisional as of December 23, 2017



2017-2018 Influenza Season Cumulative number of  
Confirmed Cases, Hospitalizations, and Deaths (Provisional)





## A New Ounce of Prevention for You & Your Family

[www.flunearyou.org](http://www.flunearyou.org)

Flu Near You is a free, real-time disease tracking system that engages you, your family and your friends directly in flu prevention and gives you the knowledge to help everyone stay healthy. Flu Near You uses anonymous reporting to help promote flu prevention in your community and head off the spread of disease among your friends and loved ones.



## How it Works

Becoming a flu fighter is simple, fast and confidential. Anyone 13 or older can go to [www.flunearyou.org](http://www.flunearyou.org) to sign-up.

You will get a weekly email with two questions: *Do you have any of the following 10 symptoms?* and *Have you had a flu shot?*

Flu Near You uses these reports to create a real-time map and graphs that show you the spread of flu across the country, right down to the zip code level.

The website has a lot of useful information including links to public health websites, information about the number of reports in your state, and places to get vaccinated.

This is just the first step in building a reporting system that can eventually extend beyond influenza to other communicable diseases in the U.S. and across the world.

It's an exciting prospect. But the big benefits only happen if we're all willing to join in.

Help spread the word, not the flu! [www.flunearyou.org](http://www.flunearyou.org)