

SOUTH DAKOTA 2019 Center for Nursing Workforce Symposium

April 30, 2019

Hilton Garden Inn South
5300 S. Grand Circle, Sioux Falls, SD

Please join us at the South Dakota Center for Nursing Workforce's Symposium with keynote speaker Dr. Peter Buerhaus, Ph.D., RN, FAAN, a nationally known expert and economist on workforce. You will have a wonderful opportunity to learn about South Dakota's nursing workforce, network and share ideas on South Dakota's nursing supply, education, and practice, and to identify strategies to meet the state's current and future workforce needs.

Keynote Speakers



Peter Buerhaus, Ph.D., RN, FAAN

A nurse and healthcare economist, Buerhaus is well known for studies and publications on forecasting nurse and physician supply, developing and testing measures of hospital quality of care, determining public and provider opinions on issues involving the delivery of health care, and assessing the quantity and quality of health care provided by nurse practitioners.

He has published over 100 articles with five designated as "Classics" by the Agency for Healthcare Research and Quality (AHRQ); and has co-authored book: *The Future of the Nursing Workforce in the United States: Data, Trends, and Implications* (2008).

Currently Dr. Buerhaus is a Professor in the College of Nursing, and Director of the Center for Interdisciplinary Health Workforce Studies at Montana State University. Previously he served at Vanderbilt University as Professor of Nursing and Professor of Health Policy; and at Harvard School of Public Health as Assistant Professor of Health Policy and Management.

Dr. Buerhaus was elected into the National Academies Institute of Medicine, is a member of the American Academy of Nursing, and served on numerous national health advisory boards. In 2010, Dr. Buerhaus was appointed to Chair the National Health Workforce Commission that was established under The Patient Protection and Affordable Care Act. He currently serves as an expert advisor for the Bipartisan Policy Center's health care workforce initiative, and as a member of the Institute of Medicine Committee on Graduate Medical Education Governance and Transparency. (Source: <http://healthworkforcestudies.com/about/buerhaus.html>)

Register Now!

[Click Here to Download the Registration Form](#)

Registration

Space is limited, register early!

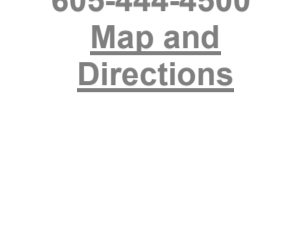
Deadline:
April 17, 2019.

Fee: \$35 - Includes conference materials, CEUs, and lunch.

For more information contact:

[Abbey Bruner](#)
605-362-2760

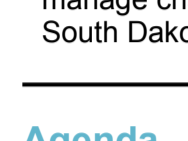
Application will be made for continuing nursing education hours.



[Hilton Garden Inn South](#)

605-444-4500

[Map and Directions](#)



Jerry Nagel, M.A.

Co-founder of the Meadowlark Institute, Nagel provides leadership training, convening, and planning services to organizations and communities using the Art of Hosting Meaningful Conversations core practices. These practices expand capacity to bring forth the knowledge, wisdom and leadership within each of us, our organizations, and communities. His methods include World Café, Open Space Technology, Appreciative Inquiry, Technology of Participation and Scenario Planning. Together we will be better able to manage change, produce social impact, and develop strategies for South Dakota's nursing workforce.

Agenda

8:30 AM CT	Registration
9:00 AM	Welcome
9:10 AM	State of the RN Workforce and Challenges and Opportunities for Primary Care <i>Dr. Peter Buerhaus</i>
11:15 AM	Break
11:35 AM	SDs Nursing Workforce Supply and Education Capacity <i>Linda Young, MS, RN, FRE, Program Director SD CNW</i> <i>Glenna Burg, MS, RN, CNE, Nursing Education Specialist, SD Board of Nursing</i>
12:30 PM	Lunch
1:30 PM	South Dakota Nursing Workforce Planning <i>Jerry Nagel</i>
4:20 PM	Closing Remarks <i>Gloria Damgaard, MS, RN, FRE</i> <i>Executive Director, SD Board of Nursing</i>
4:30 PM	Adjourn

Program Changes: The Center for Nursing Workforce reserves the right to revise the program as needed.