



**SOUTH DAKOTA BOARD OF NURSING**

**2006 ANNUAL REPORT**

**OF**

**NURSING EDUCATION PROGRAMS**

*Prepared by:*

Nancy Bohr, RN, MBA, MSN  
Nursing Program Specialist  
South Dakota Board of Nursing

Winora Robles, Senior Secretary  
South Dakota Board of Nursing

February 2007





# SOUTH DAKOTA BOARD OF NURSING

4305 SOUTH LOUISE AVENUE SUITE 201

SIOUX FALLS SD 57106-3115

(605) 362-2760 FAX: 362-2768

[www.state.sd.us/doh/nursing](http://www.state.sd.us/doh/nursing)

## 2006 ANNUAL REPORT OF NURSING EDUCATION PROGRAMS

TABLE OF CONTENTS	PAGE
<b>SOUTH DAKOTA NURSING EDUCATION PROGRAMS</b>	2
<b><u>HISTORICAL NOTES</u></b>	4
<b><u>ENROLLMENT</u></b>	7
RN Enrollment	8
LPN Enrollment	8
Enrollment by Type of Program	9
RN & LPN Enrollment: Ten Year Chronology	10
Capacity	11
RN Enrollment by Year in Program	12
RN Upward Mobility	15
Upward Mobility: Ten Year Chronology	16
<b><u>CHARACTERISTICS OF STUDENT POPULATION</u></b>	17
Gender	18
Ethnic Origin	18
Age Range	19
Geographic Origin	20
Financial Aid	20
<b><u>CURRICULUM</u></b>	21
<b><u>GRADUATES</u></b>	25
Age Range	28
<b><u>FACULTY</u></b>	29
Highest Degree Held	32
Enrolled, Pursuing Advanced Degree	33
Age Range	34
<b><u>NCLEX® RESULTS</u></b>	35
NCLEX® Ten Year Chronology	37

BACCALAUREATE PROGRAMS	DIRECTOR	STATE APPROVAL	ACCREDITATION
Augustana College Department of Nursing 2001 S Summit Avenue Sioux Falls SD 57197	Margot L. Nelson, PhD, RN Professor of Nursing (605) 274- 4729 <a href="mailto:margot.nelson@augie.edu">margot.nelson@augie.edu</a>	Full	CCNE Higher Learning Commission NCA
Colorado Technical University Department of Nursing 3901 West 59 <sup>th</sup> Street Sioux Falls SD 57108	Michele Crissman, JD, MS, RN Chair of Nursing (605) 361- 0200 <a href="mailto:mcrissman@sf.coloradotech.edu">mcrissman@sf.coloradotech.edu</a>	Interim	NCA Higher Learning Commission
Mount Marty College Department of Nursing 1105 West 8 <sup>th</sup> Street Yankton SD 57078	Ruth Pakieser, PhD, RN Chair & Director, Division of Nursing (605) 668- 1594 <a href="mailto:rpakieser@mtmc.edu">rpakieser@mtmc.edu</a>	Full	NLNAC Higher Learning Commission NCA
National American University Department of Nursing 5301 S Highway 16, Suite 200 Rapid City SD 57701	Ellie Brooks, RN, PhD Interim System Chair Nursing (605) 721- 5278 <a href="mailto:ebrooks@national.edu">ebrooks@national.edu</a>	Interim	Higher Learning Commission
Presentation College Department of Nursing 1500 North Main Street Aberdeen SD 57401	Linda Burdette, MS, RN, CNP Chair, Department of Nursing (605) 229- 8473 <a href="mailto:Linda.Burdette@presentation.edu">Linda.Burdette@presentation.edu</a>	Full	NLNAC Higher Learning Commission NCA
South Dakota State University College of Nursing Box 2275 Brookings SD 57007	Roberta K. Olson, RN, PhD Dean of Nursing (605) 688- 5178 <a href="mailto:Roberta_Olson@sdstate.edu">Roberta_Olson@sdstate.edu</a>	Full	CCNE Higher Learning Commission NCA
SDSU RN Upward Mobility Internet Based Brookings SD 57007	Tish Smyer, RN, DNSc Coordinator, RN Upward Mobility (605) 699- 6567 <a href="mailto:Tish.Smyer@sdstate.edu">Tish.Smyer@sdstate.edu</a>	Full	CCNE Higher Learning Commission NCA
SDSU Nursing Generic BSN 1011 11 <sup>th</sup> Street Rapid City SD 57701	Barbara Hobbs, RN, PhD, CNA, BC Department Head, West River (605) 394- 5385 <a href="mailto:Barbara.Hobbs@sdstate.edu">Barbara.Hobbs@sdstate.edu</a>	Full	CCNE Higher Learning Commission NCA
SDSU Accelerated Option USDSU # 255 2205 Career Avenue Sioux Falls SD 57107	Marge Hegge, RN, PhD Professor and Chair (605) 274- 4721 <a href="mailto:Marge.Hegge@sdstate.edu">Marge.Hegge@sdstate.edu</a>	Full	CCNE Higher Learning Commission NCA

MASTERS PROGRAMS	DIRECTOR	STATE APPROVAL	ACCREDITATION
<b>Masters: CNS</b> Augustana College of Nursing 2001 S Summit Avenue Sioux Falls SD 57197	Margot Nelson Professor and Chair (605) 274- 4730 <a href="mailto:margot_nelson@augie.edu">margot_nelson@augie.edu</a>	Full	CCNE Higher Learning Commission NCA
<b>Masters: CRNA</b> Mount Marty Graduate Program in Nurse Anesthesia 3932 S Western Avenue Sioux Falls SD 57105	Larry Dahlen, RN, CRNA, MS Director (605) 322- 8090 <a href="mailto:msna@mtmc.edu">msna@mtmc.edu</a>	Full	NLNAC Higher Learning Commission NCA
<b>Masters: CNS &amp; CNP</b> South Dakota State University Box 2275 Brookings SD 57007	Roberta K. Olson, RN, PhD Dean of Nursing (605) 688- 5178 <a href="mailto:Roberta_Olson@sdstate.edu">Roberta_Olson@sdstate.edu</a>	Full	CCNE Higher Learning Commission NCA

ASSOCIATE DEGREE PROGRAMS	DIRECTOR	STATE APPROVAL	ACCREDITATION
Dakota Wesleyan University Department of Nursing 1200 West University Avenue Mitchell SD 57301-0909	Gloria Thompson, RN, MS Administrative Chair (605) 995-2889 <a href="mailto:glthomps@dwu.edu">glthomps@dwu.edu</a>	Full	NLNAC Higher Learning Commission NCA
Oglala Lakota College Department of Nursing PO Box 490 Kyle SD 57752	Sarah Coulter Danner, RN, MSN Chairperson (605) 867-5856 <a href="mailto:sdanner@olc.edu">sdanner@olc.edu</a>	Full	Higher Learning Commission NCA
Presentation College Department of Nursing 1500 North Main Street Aberdeen SD 57401	Linda Burdette, MS, RN, CNP Chair, Nursing Department (605) 229-8473 <a href="mailto:Linda.Burdette@presentation.edu">Linda.Burdette@presentation.edu</a>	Full	NLNAC Higher Learning Commission NCA
University of South Dakota Department of Nursing 414 East Clark Street Vermillion SD 57069	June Larson, RN, MS Chairperson, Department of Nursing (605) 677-5006 <a href="mailto:june.larson@usd.edu">june.larson@usd.edu</a>	Full	NLNAC Higher Learning Commission NCA
USD Outreach in Nursing 1011 Eleventh Street Rapid City SD 57701	Catherine Eddy, RN, MSN Director (605) 394-5396 <a href="mailto:Ceddy@usd.edu">Ceddy@usd.edu</a>	Full	NLNAC
USD Capitol University Center 809 East Dakota Pierre SD 57501	Lisa Feller, RN, MS Generic ADN Coordinator (605) 773-6725 <a href="mailto:lfeller@usd.edu">lfeller@usd.edu</a>	Full	NLNAC
USD Outreach in Nursing Lake Area Technical Institute 230 NE 11 <sup>th</sup> Street Watertown SD 57201	Robin Brown, RN, MS USD Outreach, LPN Mobility (605) 882-5284 <a href="mailto:brownr@lakeareatech.edu">brownr@lakeareatech.edu</a>	Full	NLNAC
USD Outreach in Nursing Generic ADN 2300 N Career Avenue #260 Sioux Falls SD 57107	Linda Benedict, RN, MA Outreach in Nursing Health Center (605) 357-1411 <a href="mailto:lbenedic@usd.edu">lbenedic@usd.edu</a>	Full	NLNAC

PRACTICAL NURSING PROGRAMS	DIRECTOR	STATE APPROVAL	ACCREDITATION
Lake Area Technical Institute Practical Nursing Program 230 11 <sup>th</sup> Street NE Watertown SD 57201	Robin Brown, RN, MS Nursing Department Head (605) 882-5284 <a href="mailto:brownr@lakeareatech.edu">brownr@lakeareatech.edu</a>	Full	NLNAC Higher Learning Commission NCA
Sinte Gleska University LPN Program, PO Box 8 Mission SD 57555-0008	MaryAnn Fanning, RN Program Administrator (605) 856-8288 <a href="mailto:Mary.Fanning@sinte.edu">Mary.Fanning@sinte.edu</a>	Interim	Higher Learning Commission NCA
Sisseton Wahpeton College Department of Nursing Old Agency Box 689 Sisseton SD 57262-0689	Alta Jaquet, RN, MSN Director of Nursing (605) 742-1126 <a href="mailto:ajaquet@swc.tc">ajaquet@swc.tc</a>	Interim	Higher Learning Commission NCA
Southeast Technical Institute 2320 North Career Avenue Sioux Falls SD 57107	Kristin Possehl, RN, BSN, MEd Program Director (605) 367-4753 <a href="mailto:kristin.possehl@southteasttech.com">kristin.possehl@southteasttech.com</a>	Full	Higher Learning Commission NCA
Western Dakota Technical Institute 800 Mickelson Drive Rapid City SD 57703-4018	Lisa Krogman, RN, BSN Coordinator, Practical Nursing (605) 718-2914 <a href="mailto:lisa.krogman@wdti.tec.sd.us">lisa.krogman@wdti.tec.sd.us</a>	Full	Higher Learning Commission NCA

**PROGRAMS IN SOUTH DAKOTA WHICH PREPARE REGISTERED PROFESSIONAL  
AND PRACTICAL NURSE LICENSURE CANDIDATES: 1997 - 2006**  
INSTITUTIONS OFFERING PROGRAMS AT MORE THAN ONE CENTER ARE COUNTED AS ONE PROGRAM

YEAR (OCTOBER)	ASSOCIATE DEGREE PROGRAMS	BACCALAUREATE DEGREE PROGRAMS	ASSOCIATE + BACCALAUREATE PROGRAMS	PRACTICAL NURSE PROGRAMS	TOTAL NURSING EDUCATION PROGRAMS
1997	6	5	11	2	13
1998	6	5	11	2	13
1999	6	5	11	2	13
2000	6	5	11	3	14
2001	6	5	11	3	14
2002	5	5	10	3	13
2003	4	5	9	5	14
2004	4	5	9	5	14
2005	4	4	8	5	13
2006	4	5	9	5	14

### HISTORICAL NOTES

- 1981: Huron Nursing College began as an AD Program.
- Fall 1985: These Practical Nursing Programs did not accept applications for admission Fall 1985: Southeast Area Vocational Technical Institute, Mitchell Vocational Technical School of Practical Nursing, and Pierre School of Practical Nursing.
- Fall 1986: These Practical Nursing Programs did not accept applications for admission Fall 1986: Western Dakota Vocational Technical and Freeman Junior College.
- May 1986: Sioux Valley Hospital School of Nursing graduated its last class.
- Presentation College received interim approval for the Baccalaureate Program. The first class of students was admitted in Fall 1988.
- June 1989: Dakota Wesleyan University graduated its last class of students in the Rapid City LPN Upward Mobility Program.
- Spring 1989: Mount Marty College began offering Upward Mobility courses in Watertown.
- Western Dakota Technical Institute was approved, and admitted students in the Fall of 1989.
- 1989: The western part of the state now has all three types of programs preparing students for RN licensure and one program preparing students for LPN licensure.
- Fall 1989: South Dakota State University began admitting students to its Satellite Generic Program in Rapid City.
- Fall 1989: The University of South Dakota began admitting students to their Satellite Upward Mobility Programs in Watertown and Pierre. The program in Watertown serves as a 1+1 Program, with Lake Area Technical Institute offering the first year and USD the second.
- The University of South Dakota began admitting students to their Satellite Generic Program in Rapid City in Fall 1989 and to their Satellite Generic Program in Pierre in Spring 1991.
- Spring 1990: Presentation College discontinued the ADN Program. They offer a Baccalaureate Program with an ADN Exit Option.
- May 1991: Rapid City Regional Hospital School of Nursing graduated its last class.

- November 1991: Sisseton Wahpeton Community College received interim approval for their ADN Program, with the first class to be admitted February 1992.
- 1992: Presentation is classified as Associate Degree only; 100% of admissions exit at AD level.
- 1993: Presentation College has an Associate Degree Program with full approval from the South Dakota Board of Nursing. The Generic BSN Program has interim approval status with no students enrolled at this time. NLN accreditation was received for an RN completion program. There are currently 23 students (17 FT and 6 PT) enrolled. These students are not included in the 1993 Statistical Report.
- Presentation College offers the Associate Degree at the Eagle Butte campus only. The BSN Program is offered at the main campus, with 66 students enrolled.
- Fall 1995: Augustana College implemented a Masters Program in Nursing and admitted students.
- 1996: Mount Marty discontinued the Watertown campus Career Mobility Program.
- 1997: Huron University admitted ten students to a BSN Completion Program. These students are enrolled part time. The Program has probationary approval status.
- 1997: Presentation College received Board approval for reorganization of the BSN Program to include a satellite at the North Dakota State School of Science in Wahpeton, South Dakota.
- 1998: Huron University received interim approval status for the BSN Completion Program.
- Presentation College is offering the BSN Completion Program at Queen of Peace Hospital in Mitchell and at Avera McKennan Hospital in Sioux Falls.
- Huron University received full approval status for the BSN Completion Program.
- Southeast Technical Institute received prerequisite status to implement LPN Program in Fall of 2001.
- May 2002: Huron University (Si Tanka University at Huron) will close its Associate Degree Program following graduation of the last class of students in May 2002.
- Presentation College offers the Associate Degree Program on the main campus as well as the off-campus site in Eagle Butte, South Dakota.
- The Associate Degree Program at Si Tanka University at Huron officially closed May 2002.
- May 2003: Board of Nursing approval was withdrawn for the Associate Degree Nursing Program at Sisseton Wahpeton College effective May 31, 2003.
- July 2003: Interim approval was granted for LPN Programs at Sisseton Wahpeton College and at Sinte Gleska University.
- November 2003: Full approval status was granted to the LPN Program at Southeast Technical Institute.
- January 2004: Approved expansion for articulation agreement between Presentation College with Southeast Technical Institute in Sioux Falls, Lake Area Technical Institute in Watertown, and Western Dakota Technical Institute in Rapid City for BSN Completion Program for LPNs. Nursing courses begin Fall 2004 for LPN-BSN and will begin Spring 2005 for RN-BSN.
- January 2004: Granted program approval to Presentation College Baccalaureate Nursing Program, Fairmont Campus, Fairmont, MN. Minnesota Board of Nursing granted full approval of BSN Program, June 2003. Nursing courses began Fall 2004 for traditional LPN-BSN students, while RN-BSN courses began Spring 2004. Presentation College BSN Completion Program for RNs and LPNs marketed to all Avera Health sites in South Dakota.

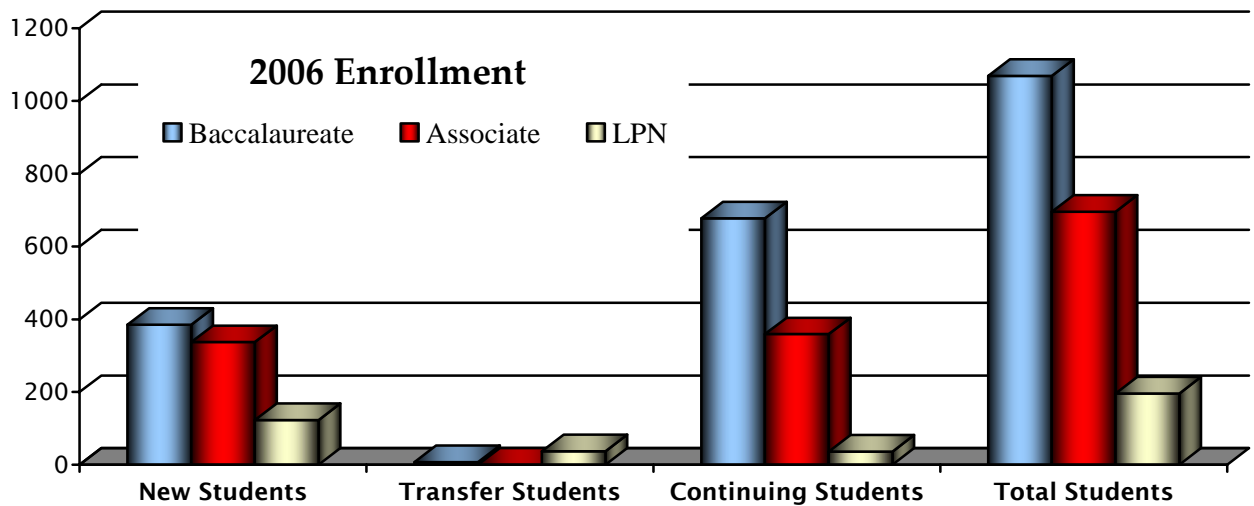
- January 2004: Southeast Technical Institute granted approval for reorganization to expand the LPN Program in Yankton.
- May 2004: First annual meeting of the Tribal College Consortium was held. Tribal Colleges in South Dakota are Si Tanka University at Huron, BSN program; Oglala College, RN Associate Degree program; Sinte Gleska College, LPN program; Sisseton Wahpeton College, LPN program; and Presentation College at Eagle Butte Campus, Associate Degree program.
- July 2004: Sisseton Wahpeton College was granted prerequisite status to begin a new LPN-RN Associate Degree Program.
- November 2004: Dakota Wesleyan University received approval for reorganization to develop a one year LPN to RN curriculum to be offered at Southeast Technical Institute in Sioux Falls.
- December 2004: South Dakota Board of Regents approved South Dakota State University PhD in Nursing Program, to prepare Nurse Scientists in roles as Nurse Educator, Nurse Researcher, and Nurse Administrator. A cohort of 12 to be admitted Fall 2005 with admissions in alternate years.
- February 2005: Colorado Technical University granted prerequisite status for an RN/BSN completion program.
- April 2005: Colorado Technical University granted Interim Status for RN/BSN completion program.
- May 2005: Dakota Wesleyan University granted approval of Proposal for Reorganization of the Nursing Education Programs to offer a satellite program in Huron.
- July 2005: Moved to grant full approval to the Sisseton Wahpeton College when 75% successful NCLEX Pass Rate has been met.
- Effective May 1, 2005: Voluntary Closing of Si Tanka University Nursing Program accepted.
- September 2005: Approved request of University of Wisconsin-Oshkosh to hold clinical experiences in South Dakota.
- September 2005: Granted Interim Status to Sinte Gleska University LPN Nursing Program.
- November 2005: Recognized Indiana State University LPN-BSN Distance Learning Program as an Indiana Board of Nursing state approved program and accredited by NLNAC. Graduates are eligible for licensure by examination in South Dakota.
- November 2005: Granted Dakota Wesleyan University prerequisite status for RN-BAN completion program.
- April 2006: Granted National American University Interim Status pending completion of a successful on-site visit for Distance RN-BSN Completion Program.
- September 2006: National American University placed on Probation Status for noncompliance with ARSD 20:48:07:38.
- September 2006: Sisseton Wahpeton College granted Interim Status for LPN-RN nursing program.
- November 2006: Western Dakota Technical Institute Practical Nursing Program returned to Full Approval status.
- November 2006: Granted National American University RN-BSN Distance Program Interim Status.
- November 2006: Granted Interim Status for Dakota Wesleyan University RN-BAN Distance Learning program.

# **ENROLLMENT**

RN BACCALAUREATE ENROLLMENT – OCTOBER 2006					
BACCALAUREATE	2006 BACCALAUREATE ENROLLMENT	NEW STUDENTS	TRANSFER STUDENTS	CONTINUING STUDENTS	TOTAL
	Augustana College of Nursing	61	1	55	117
	Mount Marty College of Nursing	64	0	137	201
	Presentation BSN Program	101	1	137	239
	South Dakota State University	159	5	348	512
	<b>BACCALAUREATE TOTAL</b>	<b>385</b>	<b>7</b>	<b>677</b>	<b>1069</b>

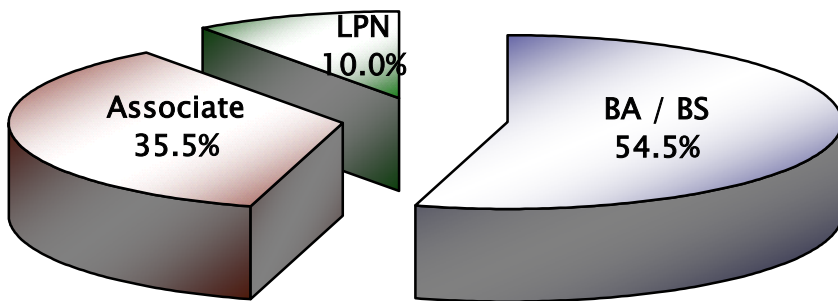
RN ASSOCIATE ENROLLMENT – OCTOBER 2006					
ASSOCIATE	2005 ASSOCIATE ENROLLMENT	NEW STUDENTS	TRANSFER STUDENTS	CONTINUING STUDENTS	TOTAL
	Dakota Wesleyan University	76	0	53	129
	Oglala Lakota College	11	0	7	18
	Presentation ADN Program	4	0	6	10
	University of South Dakota	246	0	293	539
	<b>ASSOCIATE TOTAL</b>	<b>337</b>	<b>0</b>	<b>359</b>	<b>696</b>

LPN ENROLLMENT – OCTOBER 2006					
LPN	2005 ENROLLMENT	NEW STUDENTS	TRANSFER STUDENTS	CONTINUING STUDENTS	TOTAL
	Lake Area Technical Institute	67	0	1	68
	Sinte Gleska University	8	0	1	9
	Sisseton Wahpeton College	8	0	0	8
	Southeast Technical Institute	11	37	33	81
	Western Dakota Technical	29	0	1	30
	<b>LPN TOTAL</b>	<b>123</b>	<b>37</b>	<b>36</b>	<b>196</b>

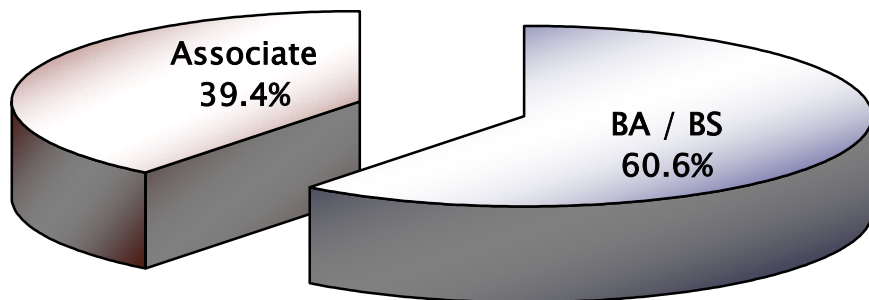


<b>2006 TOTAL RN &amp; LPN ENROLLMENT BY TYPE OF PROGRAM</b>				
PROGRAM	NUMBER OF STUDENTS		PERCENT OF 2006 TOTAL ENROLLED	CHANGE 2005-2006
	2005	2006		
BACCALAUREATE	863	1069	54.5%	+ 206
ASSOCIATE	711	696	35.5%	- 15
LPN	192	196	10.0%	+ 4
<b>TOTAL</b>	<b>1766</b>	<b>1961</b>		<b>+195</b>

**2006 RN & LPN Enrollment  
by Program Type**



**2006 RN Enrollment  
by Program Type**

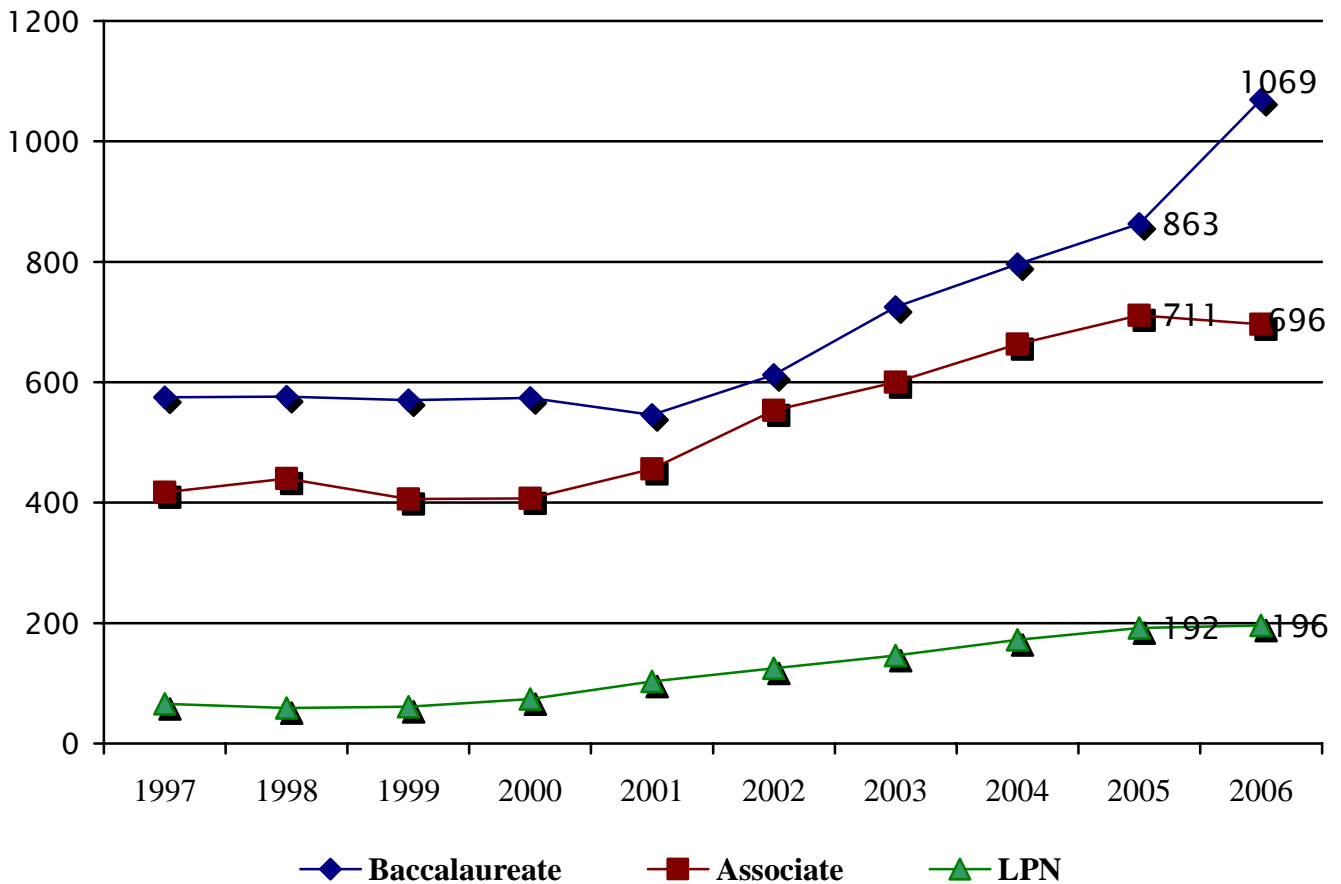


RN & LPN ENROLLMENT 1997 - 2006							
YEAR (OCTOBER 1)	BACCALAUREATE		ASSOCIATE		SUBTOTAL	LPN	TOTAL
	#	% OF RN	#	% OF RN			
1997	575	58%	417	42%	992	66	1058
1998	576	57%	440	43%	1016	59	1075
1999	570	58%	406	42%	976	61	1037
2000	574	59%	407	42%	981	74	1055
2001	546	54%	456	46%	1002	103	1105
2002	612	53%	553	47%	1165	125	1290
2003	725	55%	600	45%	1325	146	1471
2004	796	55%	663	45%	1459	172	1631
2005	863	54.8%	711	45.2%	1574	192	1766
2006	1069	60.6%	696	39.4%	1765	196	1961

2001-2006 numbers exclude RN Upward Mobility students.

Numbers for previous years have been adjusted to reflect pre-licensure students only.

### Enrollment 1997-2006



**RN CAPACITY: SPRING 2006 (EXCLUDES RN UPWARD MOBILITY)**

NEW ENROLLEES	CAPACITY	COMPLETE APS RECEIVED	NOT ACCEPTED	ACCEPTED & DECLINED	QUALIFIED - NO SPACE	DROPPED PRE- CENSUS	ACCEPTED & ENROLLED
Mount Marty	48	41	7	0	0	0	34
USD	48+ unltd	131	31	8	39	1	52
SDSU	128	251	12	0	111	0	128
TOTALS	224	423	50	8	150	1	214

**BACCALAUREATE CAPACITY: FALL 2006**

NEW ENROLLEES	CAPACITY	COMPLETE APS RECEIVED	NOT ACCEPTED	ACCEPTED & DECLINED	QUALIFIED - NO SPACE	DROPPED PRE- CENSUS	ACCEPTED & ENROLLED
Augustana	64	81	13	7	0	0	61
Presentation BSN	88+ unltd	129	15	10	0	3	101
SDSU	176	277	54	13	51	0	159
TOTALS	328	487	82	30	51	3	321

**ASSOCIATE CAPACITY: FALL 2006**

NEW ENROLLEES	CAPACITY	COMPLETE APS RECEIVED	NOT ACCEPTED	ACCEPTED & DECLINED	QUALIFIED - NO SPACE	DROPPED PRE- CENSUS	ACCEPTED & ENROLLED
Dakota Wesleyan	104	177	37	54	0	10	76
Oglala Lakota	20- 24	13	1	0	0	1	11
Presentation ADN	16	9	2	3	0	0	4
USD	166+ unltd	487	89	42	105	5	246
TOTALS	306+	686	129	99	105	16	337

**LPN CAPACITY 2006**

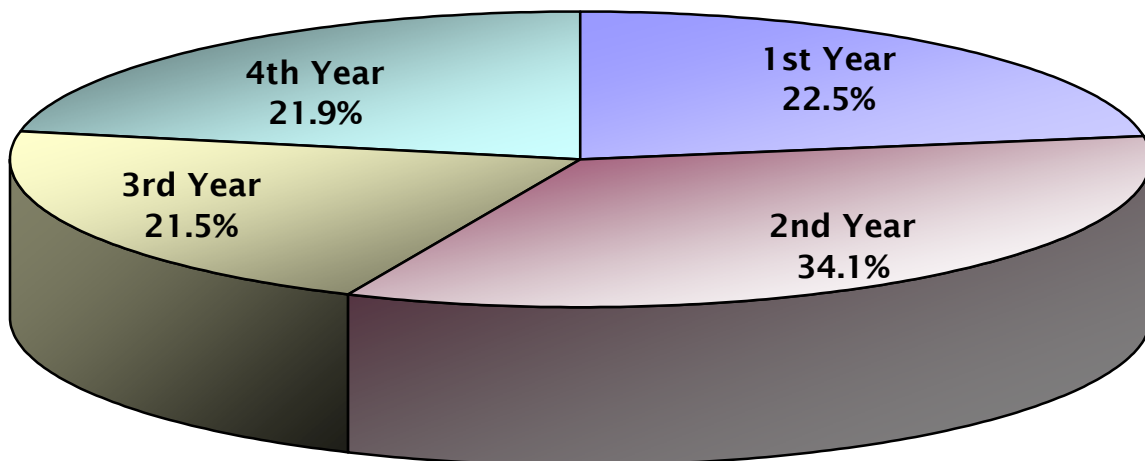
NEW ENROLLEES	CAPACITY	COMPLETE APS RECEIVED	NOT ACCEPTED	ACCEPTED & DECLINED	QUALIFIED - NO SPACE	DROPPED PRE- CENSUS	ACCEPTED & ENROLLED
Lake Area	68	103	18	10	8	0	67
Sinte Gleska	9	10	0	0	0	1	9
Sisseton Wahpeton	16	10	0	0	0	2	8
SE Tech	60	314	247	13	5	2	47
Western Dakota	48	90	29	17	9	5	30
TOTALS	201	527	294	40	22	10	161

2006 ENROLLMENT BY YEAR IN PROGRAM (EXCLUDES RN UP)					
BACCALAUREATE		2 <sup>ND</sup> YEAR	3 <sup>RD</sup> YEAR	4 <sup>TH</sup> YEAR	TOTAL
Augustana		-	61	56	117
Mount Marty		30	36	33	99
Presentation BSN		97	73	56	226
SDSU		111	184	217	512
<b>RN BACCALAUREATE TOTALS</b>		<b>238</b>	<b>354</b>	<b>362</b>	<b>954</b>

2006 ENROLLMENT BY YEAR IN PROGRAM				
ASSOCIATE	1 <sup>ST</sup> YEAR	2 <sup>ND</sup> YEAR		TOTAL
Dakota Wesleyan	62	67		129
Oglala Lakota	11	7		18
Presentation ADN	4	6		10
USD	294	245		539
<b>RN ASSOCIATE TOTALS</b>	<b>371</b>	<b>325</b>		<b>696</b>

<b>RN BACCALAUREATE + RN ASSOCIATE TOTAL</b>	<b>1<sup>ST</sup> YEAR</b>	<b>2<sup>ND</sup> YEAR</b>	<b>3<sup>RD</sup> YEAR</b>	<b>4<sup>TH</sup> YEAR</b>	<b>TOTAL</b>
	<b>371</b>	<b>563</b>	<b>354</b>	<b>362</b>	<b>1650</b>

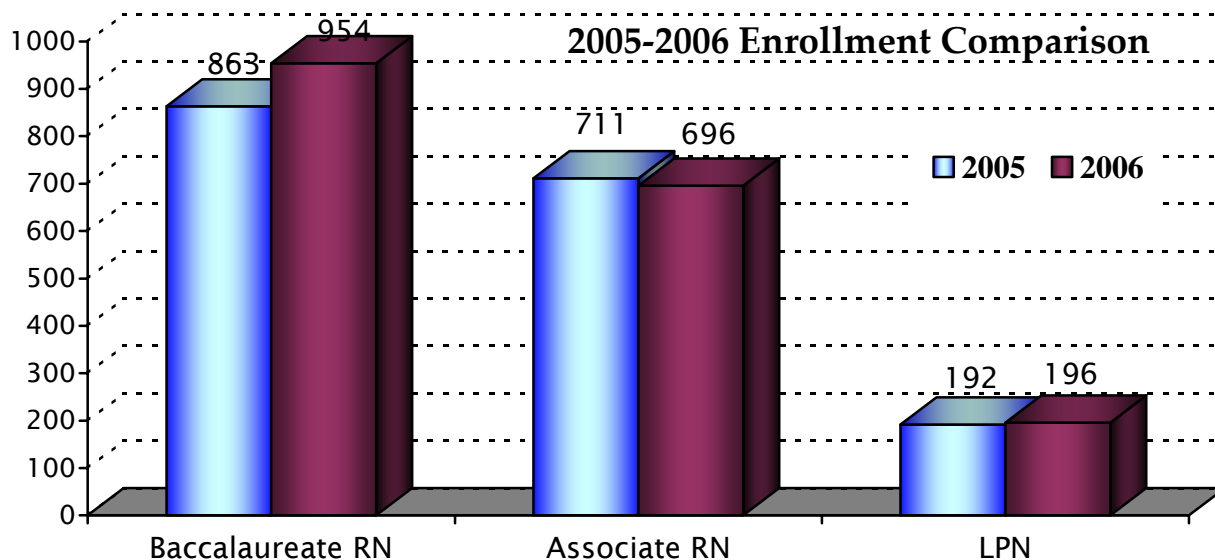
**2006 RN Enrollment by Year in Program**



ENROLLMENT – OCTOBER 2005 & OCTOBER 2006					
BACCALAUREATE ENROLLMENT (EXCLUDES RN UP)	FULL TIME 2006	PART TIME 2006	TOTAL 2006	TOTAL 2005	CHANGE 2005-2006
Augustana	117	0	117	115	+ 2
Mount Marty	96	3	99	117	- 18
Presentation BSN	185	41	226	186	+ 40
SDSU	512	0	512	445	+ 67
<b>BACCALAUREATE TOTALS</b>	<b>910</b>	<b>44</b>	<b>954</b>	<b>863</b>	<b>+91</b>
ASSOCIATE ENROLLMENT	FULL TIME 2006	PART TIME 2006	TOTAL 2006	TOTAL 2005	CHANGE 2005-2006
Dakota Wesleyan	121	8	129	132	- 3
Oglala Lakota	17	1	18	24	- 6
Presentation ADN	6	4	10	12	- 2
USD	205	334	539	543	- 4
<b>ASSOCIATE TOTALS</b>	<b>349</b>	<b>347</b>	<b>696</b>	<b>711</b>	<b>-15</b>

<b>BACCALAUREATE + ASSOCIATE</b>	<b>1259</b>	<b>391</b>	<b>1650</b>	<b>1574</b>	<b>+76</b>
----------------------------------	-------------	------------	-------------	-------------	------------

LPN PROGRAM ENROLLMENT	FULL TIME 2006	PART TIME 2006	TOTAL 2006	TOTAL 2005	CHANGE 2005-2006
Lake Area Technical	67	1	68	47	+ 21
Sinte Gleska	9	0	9	9	-
Sisseton Wahpeton	8	0	8	14	- 6
Southeast Technical	71	10	81	93	- 12
Western Dakota	30	0	30	29	+ 1
<b>LPN TOTALS</b>	<b>185</b>	<b>11</b>	<b>196</b>	<b>192</b>	<b>+4</b>



**2006 RN STUDENT ENROLLMENT BY YEAR IN PROGRAM**

1 <sup>ST</sup> YEAR		GENERIC	LPN UP	GENERIC + LPN UP	TOTAL
	Dakota Wesleyan	62	0	62	62
	Oglala Lakota	11	0	11	11
	Presentation ADN	4	0	4	4
	USD	250	44	294	294
<b>1<sup>ST</sup> YEAR ENROLLED</b>		<b>327</b>	<b>44</b>	<b>371</b>	<b>371</b>

2 <sup>ND</sup> YEAR		GENERIC	LPN UP	GENERIC + LPN UP	TOTAL
	Dakota Wesleyan	52	15	67	67
	Mount Marty	30	0	30	30
	Oglala Lakota	7	0	7	7
	Presentation ADN	6	0	6	6
	Presentation BSN	74	23	97	97
	SDSU	111	0	111	111
	USD	229	16	245	245
<b>2<sup>ND</sup> YEAR ENROLLED</b>		<b>509</b>	<b>54</b>	<b>563</b>	<b>563</b>

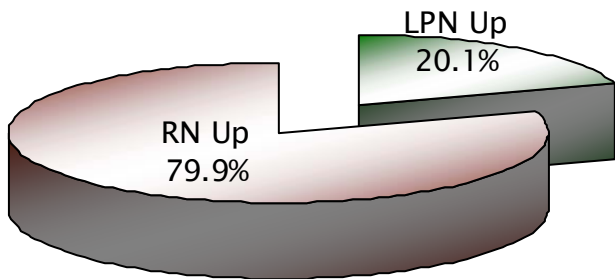
3 <sup>RD</sup> YEAR		GENERIC	LPN UP	GENERIC + LPN UP	RN UP	TOTAL
	Augustana	61	0	61	0	61
	Mount Marty	36	0	36	0	36
	Presentation BSN	65	8	73	4	77
	SDSU	184	0	184	159	343
<b>3<sup>RD</sup> YEAR ENROLLED</b>		<b>346</b>	<b>8</b>	<b>354</b>	<b>163</b>	<b>517</b>

4 <sup>TH</sup> YEAR		GENERIC	LPN UP	GENERIC + LPN UP	RN UP	TOTAL
	Augustana	56	0	56	2	58
	Mount Marty	33	0	33	2	35
	Presentation BSN	49	7	56	9	65
	SDSU	217	0	217	68	285
<b>4<sup>TH</sup> YEAR ENROLLED</b>		<b>355</b>	<b>7</b>	<b>362</b>	<b>81</b>	<b>443</b>

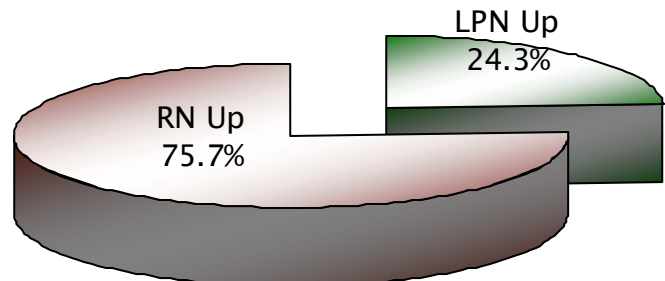
<b>1<sup>ST</sup> – 4<sup>TH</sup> YEAR TOTAL RN ENROLLMENT</b>	<b>1537</b>	<b>113</b>	<b>1650</b>	<b>244</b>	<b>1894</b>
---	-------------	------------	-------------	------------	-------------

2006 UPWARD MOBILITY ENROLLMENT IN NURSING COURSES			
BACCALAUREATE ENROLLMENT	LPN UP	RN UP	TOTAL
Augustana	0	2	2
Mount Marty	0	2	2
National American University	0	30	30
Presentation	38	13	51
SDSU	0	227	227
<b>BACCALAUREATE TOTALS</b>	<b>38</b>	<b>274</b>	<b>312</b>
ASSOCIATE ENROLLMENT	LPN UP	RN UP	TOTAL
Dakota Wesleyan	15	-	15
USD	16	-	16
<b>ASSOCIATE TOTALS</b>	<b>31</b>	<b>-</b>	<b>31</b>
<b>GRAND TOTAL 2006</b>	<b>69</b>	<b>274</b>	<b>343</b>
<b>GRAND TOTAL 2005</b>	<b>103</b>	<b>321</b>	<b>424</b>
<b>CHANGE 2005 TO 2006</b>	<b>-34</b>	<b>-47</b>	<b>-81</b>

**2006 Upward Mobility**

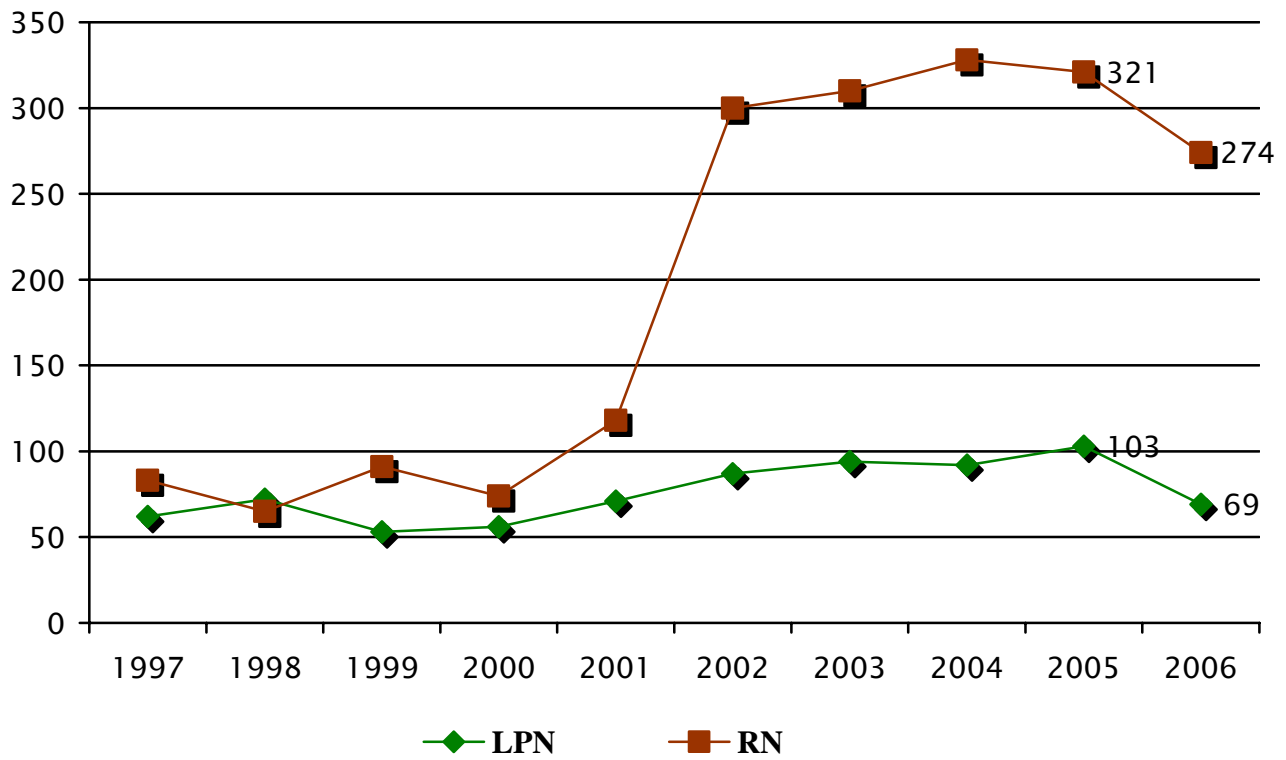


**2005 Upward Mobility**



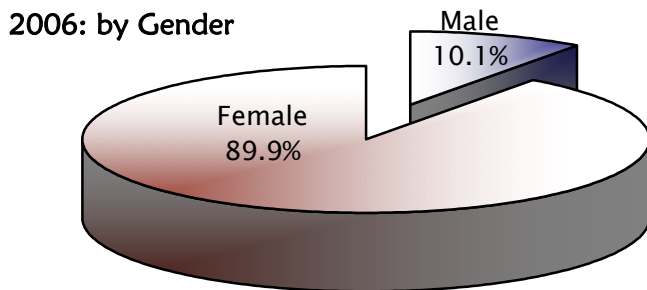
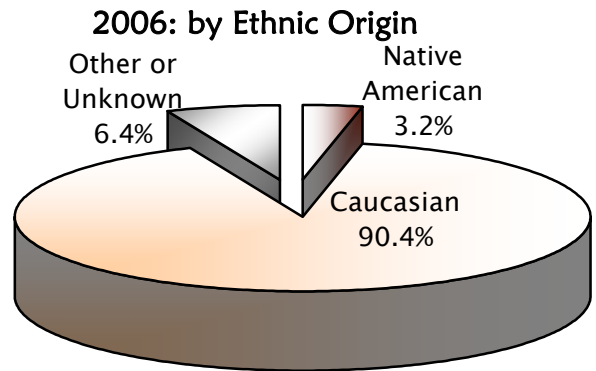
UPWARD MOBILITY 1997 - 2006						
INSTITUTIONS OFFERING PROGRAMS AT MORE THAN ONE CENTER ARE COUNTED AS ONE PROGRAM						
YEAR (OCTOBER)	LPNS ENROLLED IN BA/BS	LPNS ENROLLED IN AD	LPNS SUBTOTAL	RNS ENROLLED IN BA/BS	RN + LPN UPWARD MOBILITY ENROLLMENT	CHANGE FROM PREVIOUS YEAR
1997	15	47	62	83	145	- 6
1998	24	48	72	65	137	- 8
1999	17	36	53	91	144	+ 7
2000	22	34	56	74	130	- 14
2001	21	50	71	118	189	+ 59
2002	36	51	87	300	387	+ 198
2003	29	65	94	310	404	+ 17
2004	21	71	92	328	420	+ 16
2005	34	69	103	321	424	+ 4
2006	38	31	69	274	343	- 81

Upward Mobility 1997 - 2006

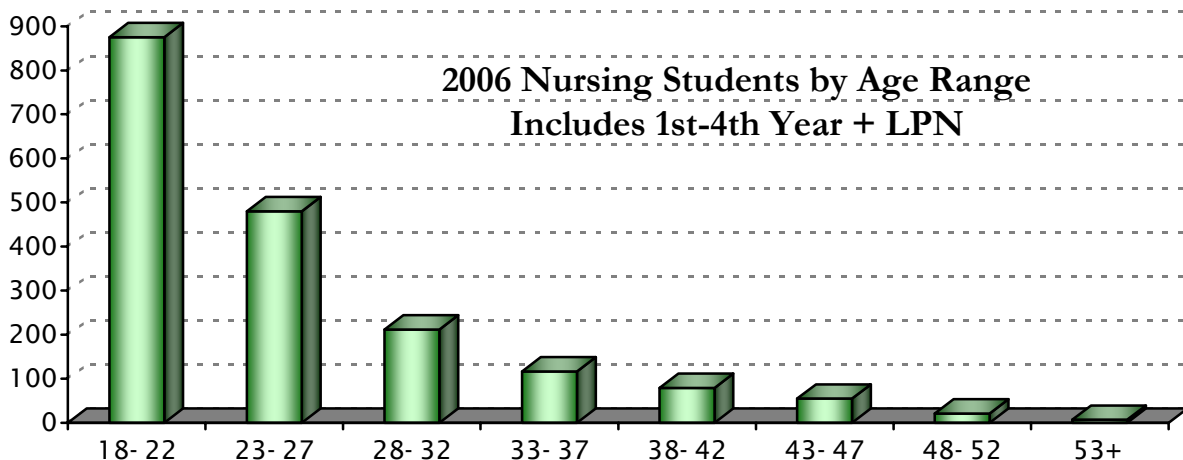


**CHARACTERISTICS  
OF STUDENT  
POPULATION**

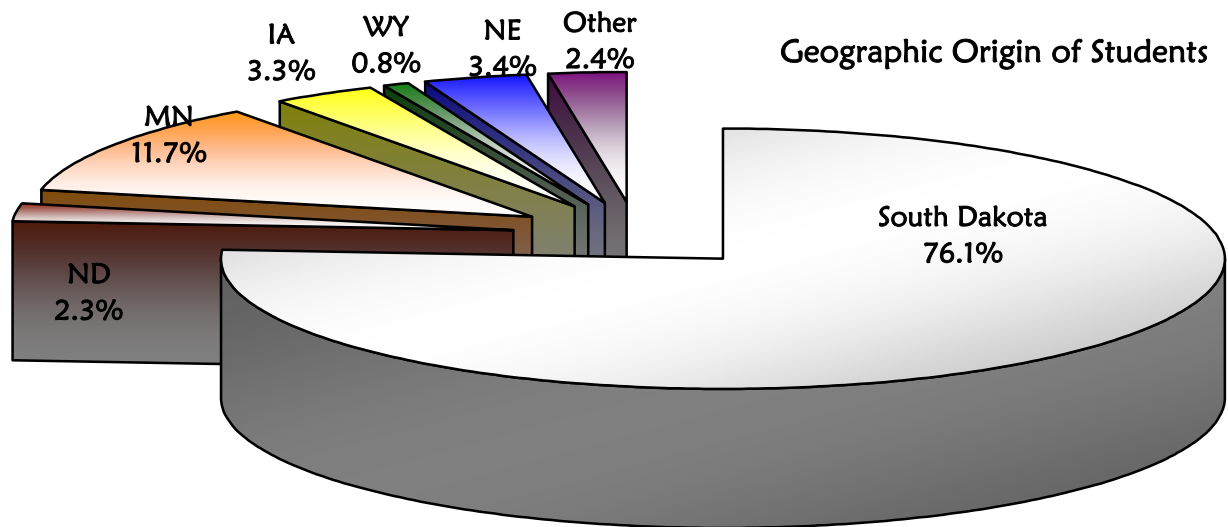
2006 RN & LPN STUDENT CHARACTERISTICS (EXCLUDES RN UP)									
STUDENTS ENROLLED IN NURSING COURSES	TOTAL ENROLLED	GENDER		PRIMARY ETHNIC ORIGIN					
		FEMALE	MALE	CAUCASIAN	NATIVE AMERICAN	BLACK	HISPANIC	ASIAN	OTHER OR MISSING DATA
Augustana	117	102	15	116	0	0	1	0	0
Dakota Wesleyan	129	121	8	122	2	0	1	1	3
Lake Area	68	65	3	66	1	0	1	0	0
Mount Marty	99	92	7	97	1	0	1	0	0
Oglala Lakota	18	17	1	3	14	0	0	1	0
Presentation AD + BSN	236	223	13	178	10	3	1	1	43
Sinte Gleska	9	8	1	1	7	0	0	0	1
Sisseton Wahpeton	8	7	1	3	5	0	0	0	0
Southeast Technical	81	74	7	72	1	0	0	0	8
SDSU	512	442	70	489	4	2	2	4	11
USD	539	480	59	495	12	5	5	2	20
Western Dakota	30	29	1	26	2	1	1	0	0
<b>TOTAL</b>	<b>1846</b>	<b>1660</b>	<b>186</b>	<b>1668</b>	<b>59</b>	<b>11</b>	<b>13</b>	<b>9</b>	<b>86</b>



2006 AGE RANGE OF NURSING STUDENTS BY YEAR OF ENROLLMENT										
		18-22	23-27	28-32	33-37	38-42	43-47	48-52	53+	TOTAL
LPN	Lake Area	24	21	8	4	7	4	0	0	68
	Sinte Gleska	0	3	1	3	1	1	0	0	9
	Sisseton Wahpeton	2	3	2	1	0	0	0	0	8
	Southeast Technical	40	21	10	5	2	2	1	0	81
	Western Dakota	16	9	2	2	1	0	0	0	30
	<b>LPN TOTAL</b>	<b>82</b>	<b>57</b>	<b>23</b>	<b>15</b>	<b>11</b>	<b>7</b>	<b>1</b>	<b>0</b>	<b>196</b>
1 <sup>ST</sup> YEAR	Dakota Wesleyan	34	13	6	3	4	2	0	0	62
	Oglala Lakota	3	3	2	0	2	1	0	0	11
	Presentation ADN	1	0	1	1	0	0	1	0	4
	USD	115	61	46	33	15	18	5	1	294
	<b>1<sup>ST</sup> YEAR TOTAL</b>	<b>153</b>	<b>77</b>	<b>55</b>	<b>37</b>	<b>21</b>	<b>21</b>	<b>6</b>	<b>1</b>	<b>371</b>
2 <sup>ND</sup> YEAR	Dakota Wesleyan	26	13	20	2	2	3	0	1	67
	Mount Marty	20	6	1	1	1	0	1	0	30
	Oglala Lakota	0	4	0	1	2	0	0	0	7
	Presentation ADN	0	1	2	0	1	1	1	0	6
	Presentation BSN	50	19	13	8	2	0	2	3	97
	SDSU	89	16	4	1	1	0	0	0	111
	USD	59	69	45	30	22	14	4	2	245
<b>2<sup>ND</sup> YEAR TOTAL</b>	<b>244</b>	<b>128</b>	<b>85</b>	<b>43</b>	<b>31</b>	<b>18</b>	<b>8</b>	<b>6</b>	<b>563</b>	
3 <sup>RD</sup> YEAR	Augustana	52	5	3	1	0	0	0	0	61
	Mount Marty	22	8	3	2	1	0	0	0	36
	Presentation BSN	26	29	9	4	2	2	1	0	73
	SDSU	133	32	8	5	3	2	1	0	184
	<b>3<sup>RD</sup> YEAR TOTAL</b>	<b>233</b>	<b>74</b>	<b>23</b>	<b>12</b>	<b>6</b>	<b>4</b>	<b>2</b>	<b>0</b>	<b>354</b>
4 <sup>TH</sup> YEAR	Augustana	45	10	0	1	0	0	0	0	56
	Mount Marty	19	10	2	0	0	1	1	0	33
	Presentation BSN	14	24	7	5	4	1	1	0	56
	SDSU	85	100	17	4	6	3	2	0	217
<b>4<sup>TH</sup> YEAR TOTAL</b>	<b>163</b>	<b>144</b>	<b>26</b>	<b>10</b>	<b>10</b>	<b>5</b>	<b>4</b>	<b>0</b>	<b>362</b>	
<b>1<sup>ST</sup>-4<sup>TH</sup> YR: EXCLUDES LPN</b>		<b>793</b>	<b>423</b>	<b>189</b>	<b>102</b>	<b>68</b>	<b>48</b>	<b>20</b>	<b>7</b>	<b>1650</b>
<b>1<sup>ST</sup>-4<sup>TH</sup> YR: INCLUDES LPN</b>		<b>875</b>	<b>480</b>	<b>212</b>	<b>117</b>	<b>79</b>	<b>55</b>	<b>21</b>	<b>7</b>	<b>1846</b>



2006 GEOGRAPHIC ORIGIN OF STUDENTS (EXCLUDES RN UP)														
NURSING PROGRAM	SD		ND		MN		IA		WY		NE		OTHER	
	#	%	#	%	#	%	#	%	#	%	#	%	#	%
Augustana	60	51.3%	2	1.7%	34	29.1%	12	10.3%	-	-	5	4.3%	4	3.4%
DWU	117	90.7%	-	-	5	3.9%	1	0.8%	2	1.6%	2	1.6%	2	1.6%
Lake Area	60	88.2%	1	1.5%	7	10.3%	-	-	-	-	-	-	-	-
Mount Marty	66	66.7%	-	-	3	3%	5	5.1%	-	-	19	19.2%	6	6.1%
Oglala Lakota	13	72.2%	-	-	-	-	-	-	1	5.6%	4	22.2%	-	-
Presentation	128	54.2%	28	11.9%	62	26.3%	3	1.3%	2	0.8%	-	-	13	5.5%
Sinte Gleska	8	88.9%	-	-	-	-	-	-	-	-	1	11.1%	-	-
Sisseton Wahpeton	4	50%	-	-	4	50%	-	-	-	-	-	-	-	-
SDSU	410	80.1%	4	0.8%	67	13.1%	20	3.9%	2	0.4%	5	1%	4	0.8%
SE Tech	64	79%	-	-	4	4.9%	6	7.4%	-	-	4	4.9%	3	3.7%
USD	450	83.5%	7	1.3%	30	5.6%	12	2.2%	7	1.3%	22	4.1%	11	2%
Western Dakota	25	83.3%	1	3.3%	-	-	1	3.3%	1	3.3%	-	-	2	6.7%
<b>TOTAL</b>	<b>1405</b>	<b>76.1%</b>	<b>43</b>	<b>2.3%</b>	<b>216</b>	<b>11.7%</b>	<b>60</b>	<b>3.3%</b>	<b>15</b>	<b>0.8%</b>	<b>62</b>	<b>3.4%</b>	<b>45</b>	<b>2.4%</b>



STUDENTS RECEIVING FINANCIAL AID (EXCLUDES UPWARD MOBILITY)			
Augustana	99%	Dakota Wesleyan	97.7%
Mount Marty	100%	Oglala Lakota	100%
Presentation BSN	93%	Presentation ADN	93%
SDSU	68.4%	USD	80.7%
		Lake Area Technical	85.3%
		Sinte Gleska	100%
		Sisseton Wahpeton	80%
		Southeast Technical	80%
		Western Dakota	90%
BACCALAUREATE	81.2%	ASSOCIATE	84.5%
		PRACTICAL	84.2%
<b>OVERALL 2006 AVERAGE: 82.8 %</b>			

# **CURRICULUM**

2006 RN / CREDIT HOURS					
NURSING EDUCATION PROGRAM	FACULTY: STUDENT RATIO	CLINICAL CONVERSION CLOCK:CREDIT	CREDIT FOR CLINICAL PREPARATION	WEEKS PER SEMESTER	WEEKS IN INTERIM
Augustana	1:10 - Behavioral health clinical experience	3:1	No	14	4
Mount Marty College	1:6 Soph NSG 290 & 292	3:1	No	16	N/A
Presentation BSN	1:6 - NB338 Maternal Child	3:1	No	15	N/A
South Dakota State U	1:8	3:1	No	15	N/A
Dakota Wesleyan	1:8	3:1 SF LPN- RN: seminar hrs 2:1	Yes - Faculty present during 30 minutes prep time per 9 hr clinical rotation	15	NUR 103 (5) NUR 250 (4)
Oglala Lakota College	1:8	5:1	No	15	N/A
Presentation ADN	1:8	3:1	No	15	N/A
USD	1:4 - 1:8	3 hrs/wk x 15 wks= 1 cr	Yes - credit for preparation of hlth teaching projects (~4 hrs of 720 clinic hrs total)	15	N/A
		2 hrs seminar x 15 wks; 2:1			
Lake Area Tech	1:4 - Prairie Lakes Center	60:1	Yes - Clinical prep is used as faculty is present 1- 2 hrs/wk	18	9
National American U	N/A	N/A	N/A	*11	N/A
Sinte Gleska University	1:8	3:1	No	15	N/A
Sisseton Wahpeton	1:8	3 hrs/wk x 15 wks= 1 cr	No	15	N/A
Southeast Technical	1:8	2:1	No	18	3 wk interim; 8 wk summer
Western Dakota	1:8	40 clinic hrs: 1 credit	No	16	N/A

\* National American University on quarter system – all hours are quarter credit hours.

2006 RN / LPN CURRICULUM						
NURSING EDUCATION PROGRAM	NON-NURSING COURSES CREDIT HOURS	NURSING THEORY CREDIT HOURS	NURSING CLINICAL		TOTAL LEARNING LAB *CLOCK HOURS	TOTAL CREDIT HOURS TO GRADUATE
			CLINICAL CREDIT HOURS	CLINICAL **CLOCK HOURS		
Augustana	82	32.5	13.3	558	79.2	130
Mount Marty	74	32.8	16.2	681	84	128
Presentation BSN	71	35	21	945	67.5 hr of 945= lab	127
SDSU	72	56		945		128
Dakota Wesleyan	^ Sioux Falls LPN- RN: 31	17.5	5.75; 1.75 seminar	clinical/seminar 308.25		72
National American	82	48	0	0	0	187
Oglala Lakota	52	30	10	750	750	92
Presentation ADN	35	20	14	630	24 hr of 630= lab	69
USD	29	19	16	660	60	64
Lake Area Technical	14.5	34		692	<u>48.5 cr hrs</u> 1401 clock	75
Sinte Gleska	31	36	12	540	45 + PRN	67
Sisseton Wahpeton	21	11	16	720	180	52
Southeast Technical	19	18	8 Clinical 5 Preceptor	512 Clinical 200 Preceptor	72	52
Western Dakota	8	22	17	680	64	50

\*Clock hours need not be stated by RN Programs with the exception of clinical and learning lab hours.

\*\*All Programs are asked to list Clinical Clock Hours as total hours for all clinical and nursing learning laboratory experiences in the Program. (Clock hours per week x number of weeks for all nursing courses.)

^ students rcv 16 hrs transfer credit for SF LPN nursing curriculum & complete 25 cr in the LPN-RN program



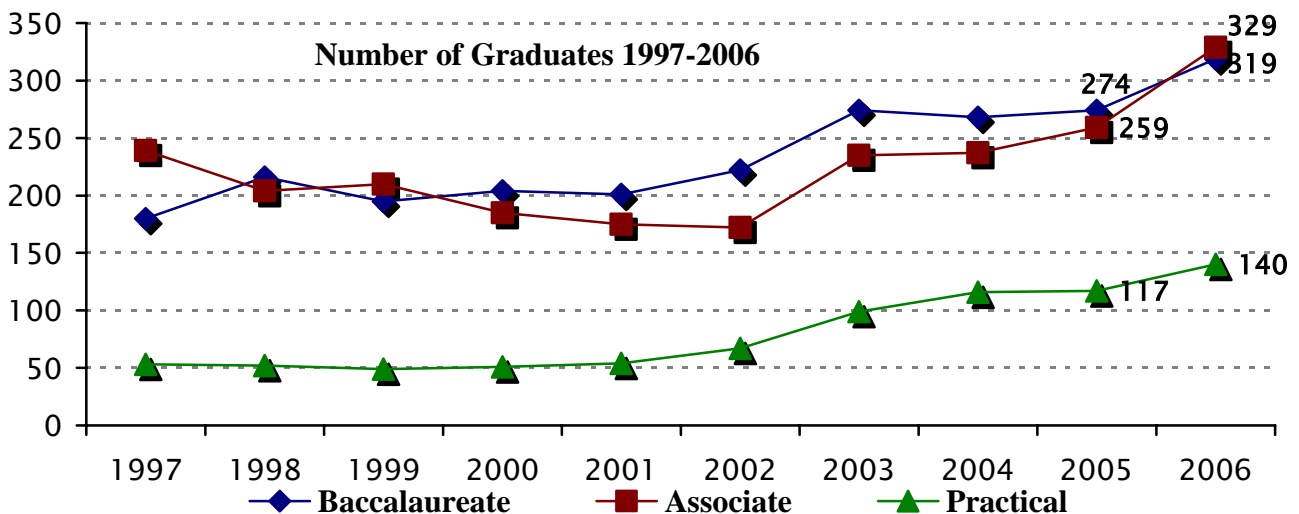
# **GRADUATES**

BACCALAUREATE GRADUATES OCTOBER 1, 2005 TO SEPTEMBER 30, 2006							
BACCALAUREATE	PROGRAM	GENERIC	LPN UP	GENERIC + LPN UP	% OF RNS PREPARED	RN UP	TOTAL
	Augustana	58	0	58	8.9%	0	58
	*Mount Marty	31	0	31	4.8%	0	31
	Presentation BSN	23	3	26	4.0%	2	28
	SDSU	204	-	204	31.5%	45	249
	<b>BACCALAUREATE TOTAL</b>	<b>316</b>	<b>3</b>	<b>319</b>		<b>47</b>	<b>366</b>

\*Mount Marty includes December graduates for the present year in each Annual Report

ASSOCIATE GRADUATES OCTOBER 1, 2005 TO SEPTEMBER 30, 2006					
ASSOCIATE	PROGRAM	GENERIC	LPN UP	GENERIC + LPN UP	% OF RNS PREPARED
	Dakota Wesleyan	42	11	53	8.2%
	Oglala Lakota	12	0	12	1.9%
	Presentation ADN	4	0	4	1.0%
	USD	206	54	260	40.1%
	<b>ASSOCIATE TOTAL</b>	<b>264</b>	<b>65</b>	<b>329</b>	
<b>BACCALAUREATE + ASSOCIATE</b>		<b>580</b>	<b>68</b>	<b>648</b>	

LPN GRADUATES OCTOBER 1, 2005 TO SEPTEMBER 30, 2006			
LPN	PROGRAM	LPN GRADUATES	% OF LPNS PREPARED
	Lake Area	40	28.6%
	Sinte Gleska	7	5%
	Sisseton Wahpeton	11	7.9%
	Southeast Technical	64	45.7%
	Western Dakota	18	12.9%
	<b>LPN TOTAL</b>	<b>140</b>	



OCTOBER 1, 2005 – SEPTEMBER 30, 2006	ORIGINAL ENROLLMENT	NUMBER OF GRADS	*GRADUATED ON SCHEDULE		GRADUATES LICENSED IN SD		GRADS WITH OTHER DEGREES	
			#	%	#	%	#	%
Augustana	58	58	58	100%	34	58.6%	4	6.9%
Dakota Wesleyan	59	53	36	61.0%	40	75.5%	9	17.0%
Lake Area Tech	46	40	37	80.4%	32	80.0%	3	7.5%
Mount Marty	38	31	29	76.3%	10	32.3%	0	-
Oglala Lakota	14	12	12	85.7%	4	33.3%	1	8.3%
Presentation ADN	9	4	2	22.2%	4	100%	0	-
Presentation BSN	33	23	23	69.7%	17	73.9%	2	8.7%
Sinte Gleska	9	7	5	55.6%	3	42.9%	0	-
Sisseton Wahpeton	14	11	11	78.6%	5	45.5%	0	-
SDSU	208	204	183	88.0%	133	65.2%	36	17.6%
Southeast Tech	89	64	55	61.8%	51	79.7%	*	*
USD	308	260	205	66.6%	180	69.2%	75	28.8%
Western Dakota	29	18	18	62.1%	15	83.3%	2	11.1%
<b>TOTAL</b>	<b>914</b>	<b>785</b>	<b>674</b>	<b>85.6%</b>	<b>528</b>	<b>67.3%</b>	<b>132</b>	<b>16.8%</b>

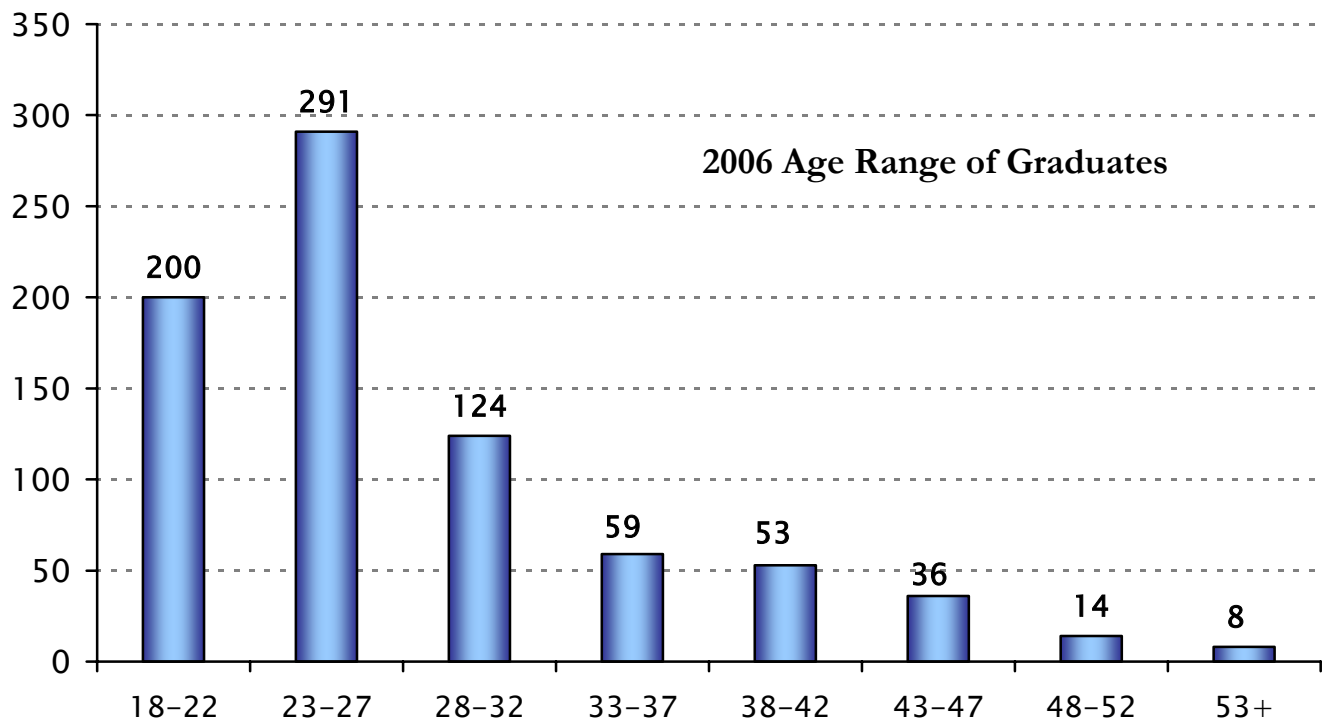
“Graduated on Schedule” percentage based on “Original Enrollment”

“Graduates Licensed in SD” and “Grads with Other Degrees” based on “Number of Grads”

\* SE Tech does not track “other degrees”

		AGE RANGE OF GRADUATES (EXCLUDES RN UPWARD MOBILITY)								
		PROGRAM	18-22	23-27	28-32	33-37	38-42	43-47	48-52	53+
DECEMBER 2005 GRADUATES	Southeast Tech	8	7	3	1	1	1	1	0	22
	SDSU	14	44	1	2	0	1	0	0	62
	USD	3	15	11	3	7	1	2	2	44
	DECEMBER 2005 TOTAL	25	66	15	6	8	3	3	2	128

		AGE RANGE OF GRADUATES (EXCLUDES RN UPWARD MOBILITY)								
		PROGRAM	18-22	23-27	28-32	33-37	38-42	43-47	48-52	53+
MAY 2006 GRADUATES	Augustana	40	14	2	0	1	0	1	0	58
	Dakota Wesleyan	13	13	10	5	4	5	2	1	53
	Lake Area	18	8	6	5	1	2	0	0	40
	Mt Marty (+Dec 06)	23	2	3	1	2	0	0	0	31
	Oglala Lakota	1	3	2	1	2	2	1	0	12
	Presentation ADN	2	1	1	0	0	0	0	0	4
	Presentation BSN	8	8	2	1	2	1	1	0	23
	Sinte Gleska	3	0	3	0	0	1	0	0	7
	Sisseton Wahpeton	2	5	1	2	0	0	1	0	11
	SDSU	15	82	21	7	9	4	1	3	142
	Southeast Tech	15	12	7	1	3	4	0	0	42
	USD (+August 06)	30	73	47	27	20	13	4	2	216
	Western Dakota	5	4	4	3	1	1	0	0	18
	MAY 2006 TOTAL	175	225	109	53	45	33	11	6	657
DEC 2005 + MAY 2006		200	291	124	59	53	36	14	8	785



# **FACULTY**

2006 BACCALAUREATE NURSING EDUCATION FACULTY									
BACCALAUREATE		FULL TIME	PART TIME		LOA / SABBATICAL	FACULTY TOTAL		FTE 2005	CHANGE 2005-2006
			#	FTE		#	FTE		
	Augustana	8	3	.95	1	11	8.95	8.9	+0.05
Mount Marty	8	9	3.16	0	17	11.16	12.01	-0.85	
National American	1	4	1	0	5	2	2	0	
^Presentation BSN	11	20	9.97	0	31	20.97	20.7	+ .27	
SDSU	41	47	24.38	0	88	65.38	56.98	+8.40	
TOTAL	69	83	39.46	1	152	108.46	100.59	+7.87	

^ Presentation ADN & BSN share some faculty

2006 ASSOCIATE NURSING EDUCATION FACULTY									
ASSOCIATE		FULL TIME	PART TIME		LOA / SABBATICAL	FACULTY TOTAL		FTE 2005	CHANGE 2005-2006
			#	FTE		#	FTE		
	Dakota Wesleyan	11	0	0	0	11	11	11	-
Oglala Lakota	5	0	0	0	5	5	3.5	+1.5	
^Presentation ADN	2	1	1	0	3	3	2.88	+0.12	
*USD	39	3	1.3	0	42	40.3	41.3	-1	
TOTAL	57	4	2.3	0	61	59.3	58.68	+ .62	

^ Presentation ADN & BSN share some faculty

2006 PRACTICAL NURSING EDUCATION FACULTY									
PRACTICAL		FULL TIME	PART TIME		LOA / SABBATICAL	FACULTY TOTAL		FTE 2005	CHANGE 2005-2006
			#	FTE		#	FTE		
	*Lake Area	5	3	1.9	0	8	6.9	6.9	-
Sinte Gleska	3	0	0	0	3	3	2	+1	
Sisseton Wahpeton	4	3	1.5	0	7	5.5	4.4	+1.1	
Southeast Tech	8	5	2.4	0	13	10.4	10.6	-0.2	
Western Dakota	4	2	0.2	0	6	4.2	4	+0.2	
TOTAL	24	13	6	0	37	30	27.9	+2.1	

\* USD Watertown & Lake Area Tech share Director (60% USD / 40% LATI)

USD Watertown & Lake Area Tech share two faculty members (30% USD / 30% LATI & 30% USD / 40% LATI)

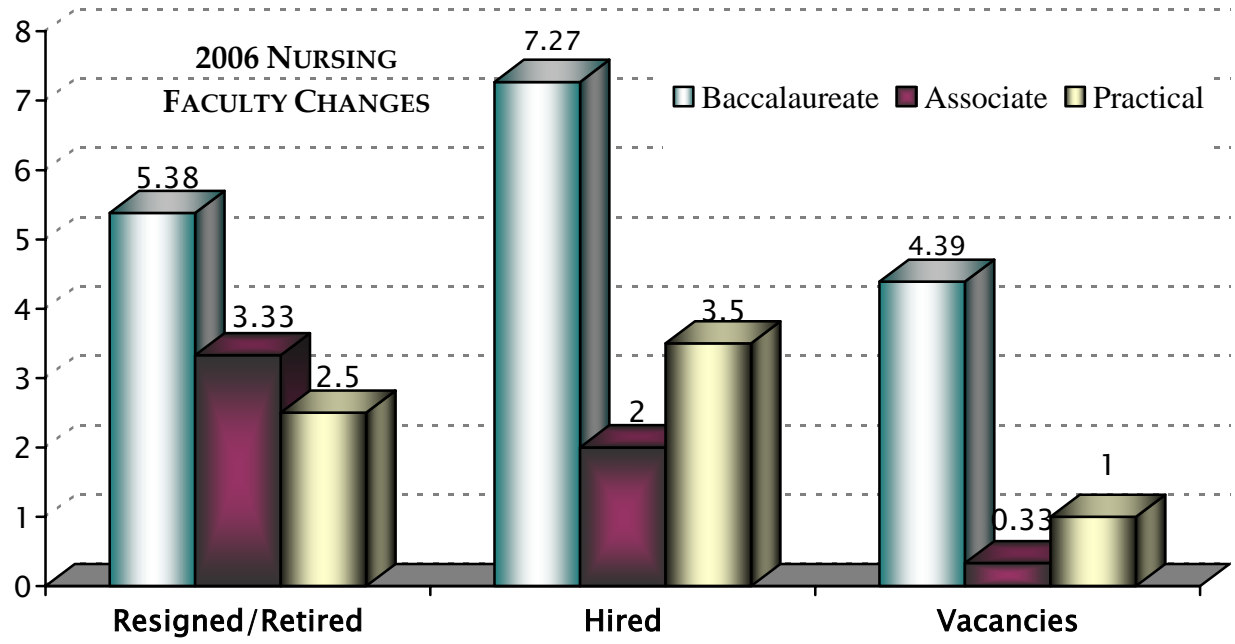
2006 BACCALAUREATE NURSING EDUCATION FACULTY: VACANCY						
BACCALAUREATE	RESIGNED/RETIRED		HIRED		VACANCIES	
	#	FTE	#	FTE	#	FTE
Augustana	1	.55	1	.60	0	0
Mount Marty	0	0	0	0	0	0
National American	0	0	0	0	1	1
Presentation BSN	4	.83	1	.21	4	3.39
SDSU	4	4	7	6.46	1	1
<b>TOTAL</b>	<b>9</b>	<b>5.38</b>	<b>9</b>	<b>7.27</b>	<b>5</b>	<b>4.39</b>

2006 ASSOCIATE NURSING EDUCATION FACULTY: VACANCY						
ASSOCIATE	RESIGNED/RETIRED		HIRED		VACANCIES	
	#	FTE	#	FTE	#	FTE
Dakota Wesleyan	0	0	0	0	0	0
Oglala Lakota	0	0	0	0	0	0
Presentation ADN	2	.33	0	0	1	0.33
USD	3	3	2	2	0	0
<b>TOTAL</b>	<b>5</b>	<b>3.33</b>	<b>2</b>	<b>2</b>	<b>1</b>	<b>.33</b>

2006 PRACTICAL NURSING EDUCATION FACULTY: VACANCY						
PRACTICAL	RESIGNED/RETIRED		HIRED		VACANCIES	
	#	FTE	#	FTE	#	FTE
Lake Area	0	0	0	0	0	0
Sinte Gleska	0	0	0	0	0	0
Sisseton Wahpeton	1	0.5	1	0.5	1	1
Southeast Technical	2	2	3	3	0	0
Western Dakota	0	0	0	0	0	0
<b>TOTAL</b>	<b>3</b>	<b>2.5</b>	<b>4</b>	<b>3.5</b>	<b>1</b>	<b>1</b>



2006 NURSING FACULTY – HIGHEST DEGREE HELD									
BACCALAUREATE	HIGHEST DEGREE HELD BY ADMINISTRATOR		DR	Nsg MS	NON-Nsg MS	NSG BA/BS	NON-NSG BA/BS	NSG AD	NSG DIP
	Augustana	PHD	3	8	0	0	0	0	0
	Mount Marty	PHD	2	8	0	5	1	0	0
	National American	PHD	1	3	0	0	0	0	0
	^Presentation BSN	MS	0	14	0	17	0	0	0
	SDSU	PHD	19	35	0	30	0	2	1
BACCALAUREATE TOTAL			24	65	0	52	1	2	1

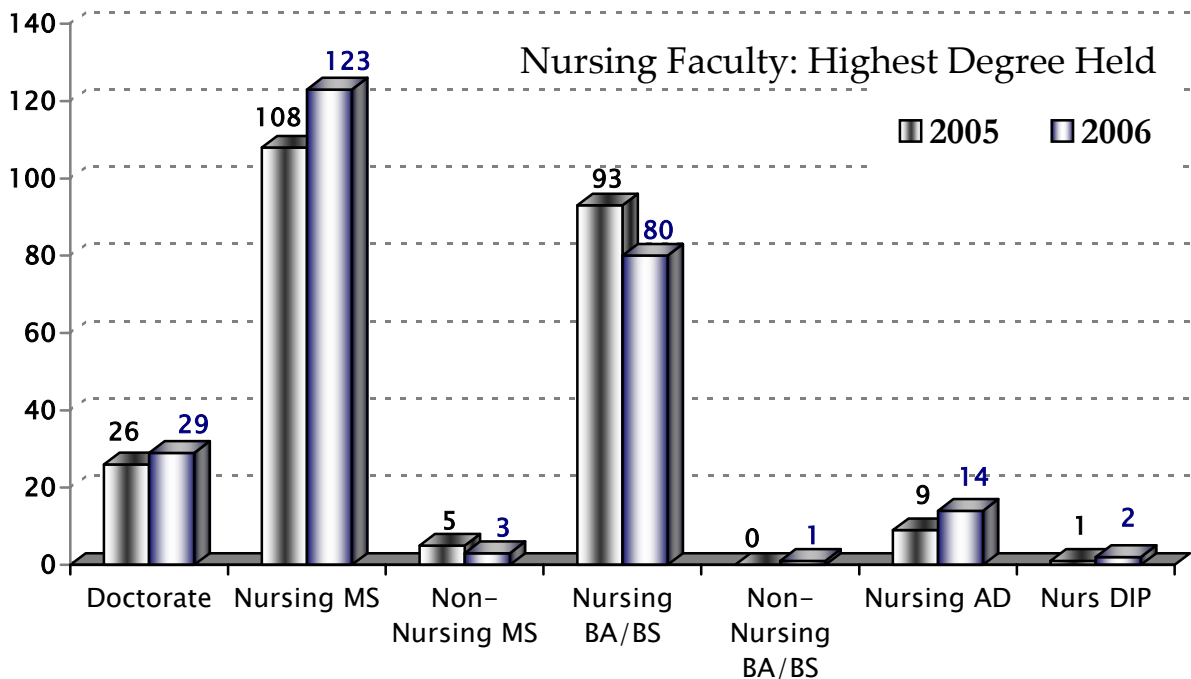
^ Presentation ADN & BSN share some faculty

ASSOCIATE			DR	Nsg MS	NON-Nsg MS	NSG BA/BS	NON-NSG BA/BS	NSG AD	NSG DIP
	Dakota Wesleyan	MS	1	7	0	2	0	0	0
	Oglala Lakota	MS	0	2	0	1	0	0	1
	^Presentation ADN	MS	0	3	0	2	0	0	0
	USD	MS	0	33	1	8	0	0	0
ASSOCIATE TOTAL			1	45	1	13	0	0	1

^ Presentation ADN & BSN share some faculty

PRACTICAL			DR	Nsg MS	NON-Nsg MS	NSG BA/BS	NON-NSG BA/BS	NSG AD	NSG DIP
	Lake Area	MS	0	3	0	4	0	0	0
	Sinte Gleska	AD	0	0	0	1	0	1	0
	Sisseton Wahpeton	MS	0	1	0	5	0	0	0
	Southeast Tech	MS	0	1	1	3	0	7	0
	Western Dakota	BSN	0	0	1	1	0	3	0
PRACTICAL TOTAL			0	5	2	14	0	11	0

ALL FACULTY TOTAL (INCLUDES ADMINISTRATORS)			DR	Nsg MS	NON-Nsg MS	NSG BA/BS	NON-NSG BA/BS	NSG AD	NSG DIP
			29	123	3	80	1	14	2

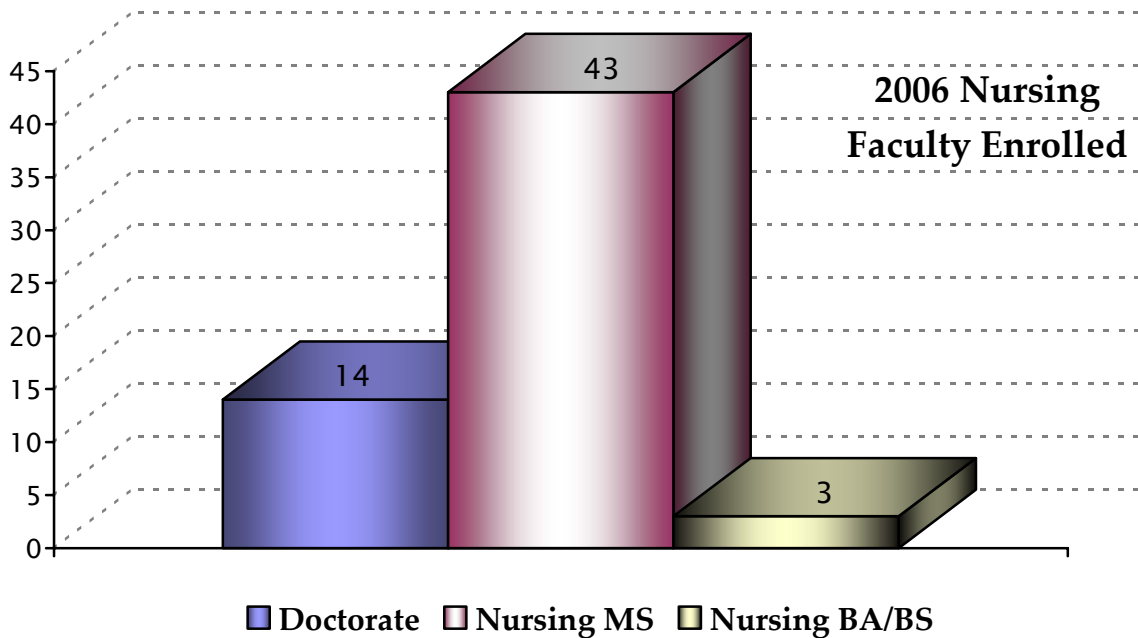


<b>NURSING FACULTY ENROLLED IN PROGRAMS LEADING TO AN ADVANCED DEGREE</b>					
<b>BACCALAUREATE</b>		<b>DOCTORATE</b>	<b>NURSING MS</b>	<b>NURSING BA/BS</b>	<b>TOTAL</b>
	Augustana	3	0	0	3
	Mount Marty	1	2	0	3
	National American	1	0	0	1
	Presentation BSN	3	4	0	7
	SDSU	5	14	0	19
<b>TOTAL</b>	<b>12</b>	<b>20</b>	<b>0</b>	<b>32</b>	

<b>ASSOCIATE</b>		<b>DOCTORATE</b>	<b>NURSING MS</b>	<b>NURSING BA/BS</b>	<b>TOTAL</b>
	Dakota Wesleyan	0	1	0	1
	Oglala Lakota	1	2	0	3
	Presentation ADN	0	1	0	1
	USD	1	8	0	9
<b>TOTAL</b>	<b>2</b>	<b>12</b>	<b>0</b>	<b>14</b>	

<b>PRACTICAL</b>		<b>DOCTORATE</b>	<b>NURSING MS</b>	<b>NURSING BA/BS</b>	<b>TOTAL</b>
	Lake Area	0	2	0	2
	Sinte Gleska	0	2	1	3
	Sisseton Wahpeton	0	3	0	3
	Southeast Tech	0	3	2	5
	Western Dakota	0	1	0	1
<b>TOTAL</b>	<b>0</b>	<b>11</b>	<b>3</b>	<b>14</b>	

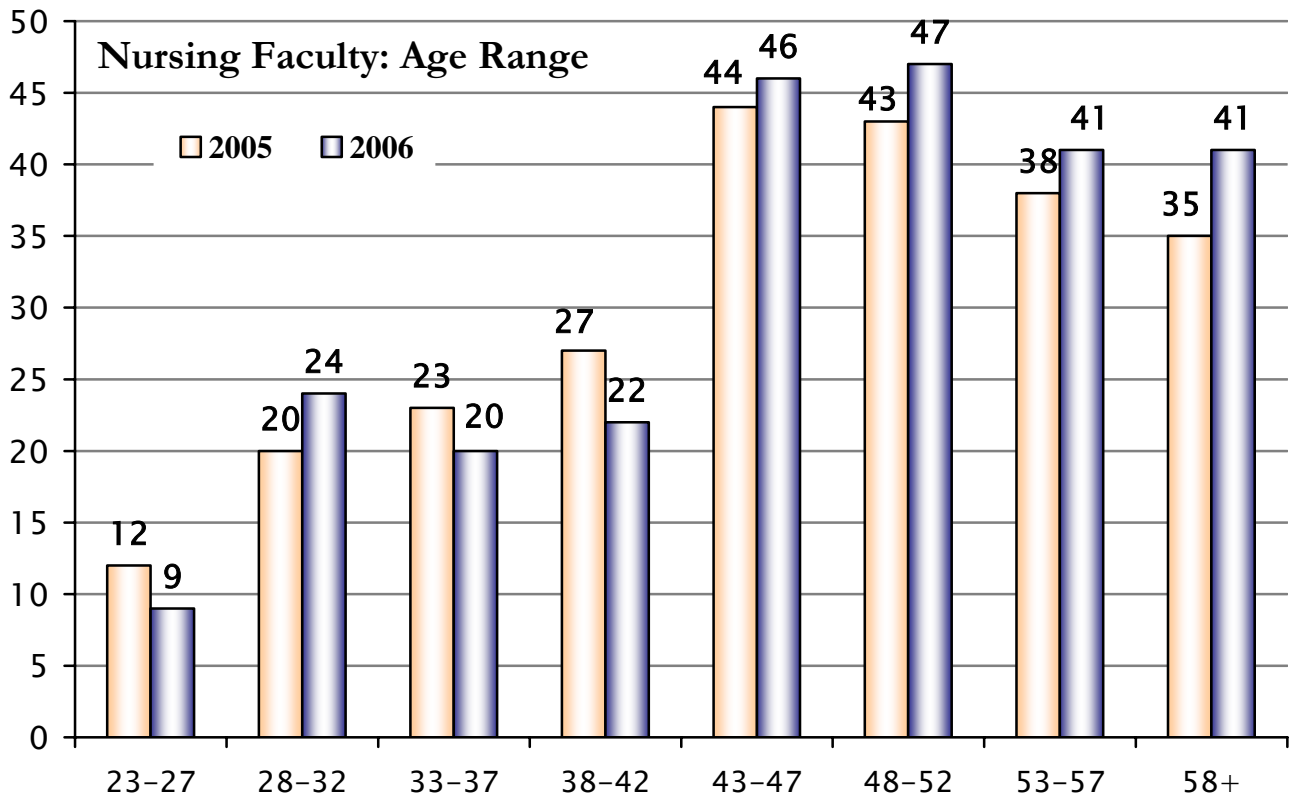
<b>ALL FACULTY ENROLLED</b>	<b>DOCTORATE</b>	<b>NURSING MS</b>	<b>NURSING BA/BS</b>	<b>TOTAL</b>
	<b>14</b>	<b>43</b>	<b>3</b>	<b>60</b>



2006 NURSING FACULTY BY AGE RANGE										
BACCALAUREATE + ASSOCIATE	PROGRAM	18-22	23-27	28-32	33-37	38-42	43-47	48-52	53-57	58+
	Augustana	0	0	0	1	0	3	1	2	5
	Dakota Wesleyan	0	0	1	1	0	1	2	2	4
	Mount Marty	0	2	3	0	2	0	3	3	4
	National American	0	0	0	0	1	0	1	1	1
	Oglala Lakota	0	0	0	0	1	1	0	1	2
	Presentation	0	2	4	6	4	4	9	3	2
	SDSU	0	4	10	6	6	14	19	15	14
	USD	0	1	3	4	5	9	5	10	5
<b>TOTAL</b>	<b>0</b>	<b>9</b>	<b>21</b>	<b>18</b>	<b>19</b>	<b>32</b>	<b>40</b>	<b>37</b>	<b>37</b>	

PRACTICAL	PROGRAM	18-22	23-27	28-32	33-37	38-42	43-47	48-52	53-57	58+
	Lake Area	0	0	1	0	2	3	1	0	1
	Sinte Gleska	0	0	1	0	0	0	0	1	1
	Sisseton Wahpeton	0	0	0	1	0	3	2	1	0
	Southeast Tech	0	0	0	1	0	6	3	2	1
	Western Dakota	0	0	1	0	1	2	1	0	1
<b>PRACTICAL TOTAL</b>	<b>0</b>	<b>0</b>	<b>3</b>	<b>2</b>	<b>3</b>	<b>14</b>	<b>7</b>	<b>4</b>	<b>4</b>	

ALL FACULTY AGE RANGE 2006	18-22	23-27	28-32	33-37	38-42	43-47	48-52	53-57	58+
	<b>0</b>	<b>9</b>	<b>24</b>	<b>20</b>	<b>22</b>	<b>46</b>	<b>47</b>	<b>41</b>	<b>41</b>



**NCLEX<sup>®</sup>**  
**RESULTS**

<b>NCLEX-RN® SOUTH DAKOTA FIRST-TIME WRITERS</b>				
<b>JANUARY 1, 2006 – DECEMBER 31, 2006</b>				
<b>BACCALAUREATE</b>		<b>WRITE</b>	<b>PASS</b>	<b>% PASS</b>
	Augustana	62	53	85.48%
	Mount Marty	30	23	76.67%
	Presentation	25	23	92%
	SD State University	203	171	84.24%
	<b>TOTAL</b>	<b>320</b>	<b>270</b>	<b>84.38%</b>

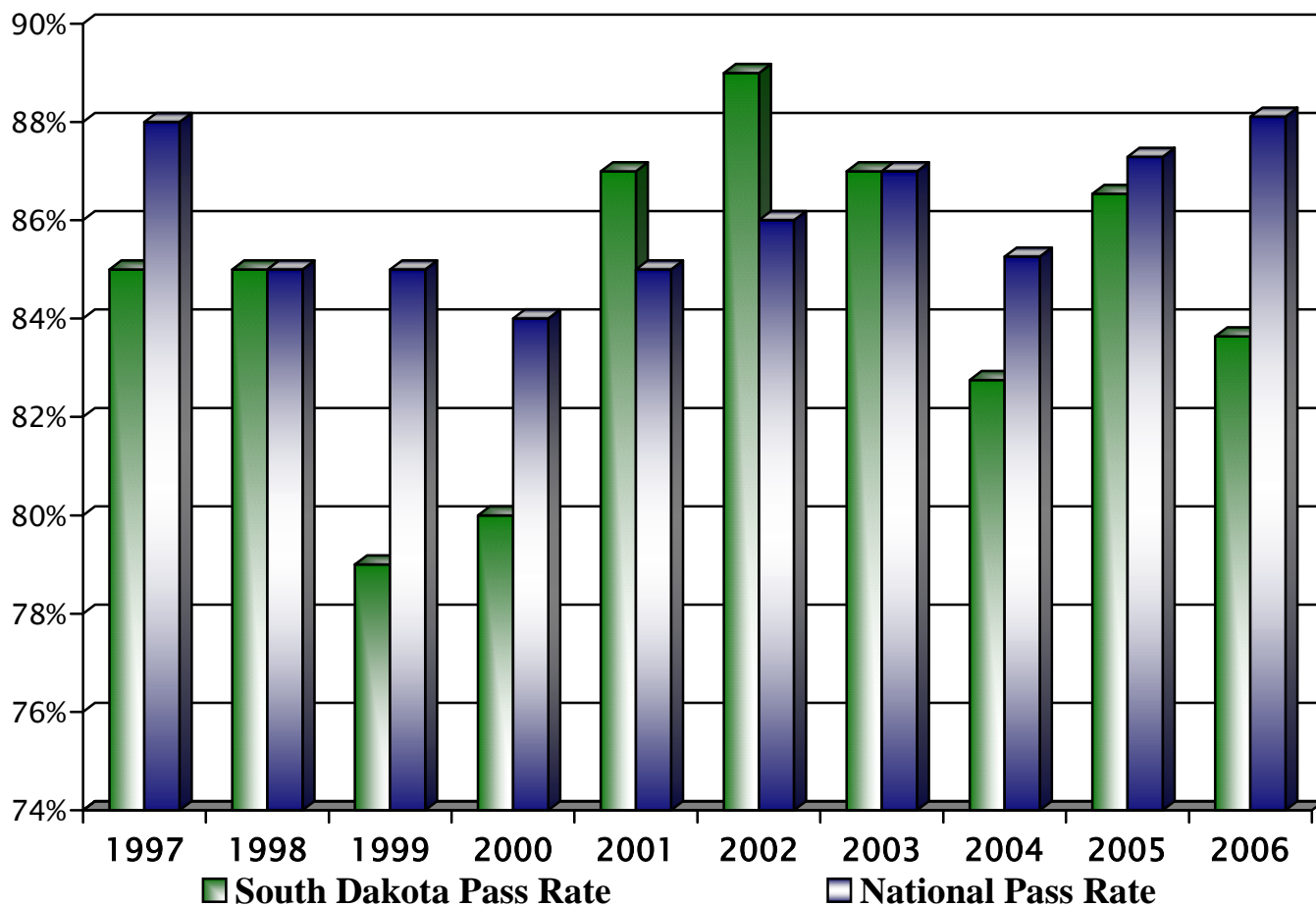
<b>NCLEX-RN® SOUTH DAKOTA FIRST-TIME WRITERS</b>				
<b>JANUARY 1, 2006 – DECEMBER 31, 2006</b>				
<b>ASSOCIATE</b>		<b>WRITE</b>	<b>PASS</b>	<b>% PASS</b>
	Dakota Wesleyan	53	45	84.91%
	Oglala Lakota	11	5	45.45%
	Presentation	5	5	100%
	University of SD	259	217	83.78%
	<b>TOTAL</b>	<b>328</b>	<b>272</b>	<b>82.92%</b>

<b>SOUTH DAKOTA RN TOTAL</b>	<b>648</b>	<b>542</b>	<b>83.64%</b>
<b>BACCALAUREATE + ASSOCIATE</b>	<b>SOUTH DAKOTA RN PASS RATE</b>		<b>83.64%</b>
	<b>NATIONAL NCLEX-RN® PASS RATE</b>		<b>88.11%</b>

<b>NCLEX-PN® SOUTH DAKOTA FIRST-TIME WRITERS</b>				
<b>JANUARY 1, 2006 – DECEMBER 31, 2006</b>				
<b>PRACTICAL</b>		<b>WRITE</b>	<b>PASS</b>	<b>% PASS</b>
	Lake Area	40	35	87.5%
	Sinte Gleska	3	3	100%
	Sisseton Wahpeton	11	8	72.73%
	Southeast Technical	61	60	98.36%
	Western Dakota	19	19	100%
	<b>TOTAL</b>	<b>134</b>	<b>125</b>	<b>93.28%</b>
<b>PRACTICAL</b>	<b>SOUTH DAKOTA LPN PASS RATE</b>		<b>93.28%</b>	
	<b>NATIONAL NCLEX-PN® PASS RATE</b>		<b>87.87%</b>	

NCLEX-RN® PASS RATES SOUTH DAKOTA FIRST TIME WRITERS 1996-2005										
BACCALAUREATE	1997	1998	1999	2000	2001	2002	2003	2004	2005	2006
Augustana	77%	89%	85%	88%	93%	95%	84%	74.5%	90.48%	85.48%
Mount Marty	96%	90%	79%	82%	100%	93%	100%	90.5%	84%	76.67%
Presentation	N/A	73%	77%	97%	96%	95%	79%	93.1%	87.5%	92%
Si Tanka at Huron	-	-	-	-	-	-	-	100%	-	-
SDSU	89%	87%	89%	75%	93%	93%	93%	85.7%	84.86%	84.24%
ASSOCIATE	1997	1998	1999	2000	2001	2002	2003	2004	2005	2006
Dakota Wesleyan	88%	88%	74%	91%	100%	85%	89%	81.8%	93.1%	84.91%
Si Tanka at Huron	89%	100%	68%	47%	100%	86%	-	-	-	-
Oglala Lakota	83%	14%	64%	100%	75%	100%	54%	60%	81.82%	45.45%
Presentation	100%	60%	56%	67%	88%	33%	91%	57.1%	33.33%	100%
Sisseton Wahpeton	75%	71%	29%	46%	46%	44%	25%	-	-	-
University of SD	88%	87%	78%	83%	83%	89%	87%	82.8%	88.26%	83.78%
<b>SD RN PASS RATE</b>	<b>87%</b>	<b>85%</b>	<b>79%</b>	<b>80%</b>	<b>87%</b>	<b>89%</b>	<b>87%</b>	<b>82.75%</b>	<b>86.54%</b>	<b>83.64%</b>
<b>NATIONAL PASS RATE</b>	<b>88%</b>	<b>85%</b>	<b>85%</b>	<b>84%</b>	<b>85%</b>	<b>86%</b>	<b>87%</b>	<b>85.26%</b>	<b>87.29%</b>	<b>88.11%</b>

**NCLEX-RN® Pass Rate Comparison**





**2006 ANNUAL REPORT**

**OF**

**NURSING EDUCATION PROGRAMS**

FEBRUARY 2007

SOUTH DAKOTA BOARD OF NURSING  
4305 SOUTH LOUISE AVENUE SUITE 201  
SIOUX FALLS SOUTH DAKOTA 57106