

Overview

<u>Resident Live Births</u>	
Number of Live Births	11,834
Rate per 1,000 Population	14.5
<u>Infant Deaths</u>	
Number of Infant Deaths	75
Rate per 1,000 Live Births	6.34
<u>Resident Deaths</u>	
Number of Resident Deaths	7,271
Rate per 100,000 Population	882.3
<u>Fetal Deaths</u>	
Number of Fetal Deaths	71
Rate per 1,000 Live Births + Fetal Deaths	5.96
<u>Marriages</u>	
Number of Marriages	6,145
Rate per 1,000 Population	7.5
<u>Divorces</u>	
Number of Divorces	2,694
Rate per 1,000 Population	3.3

This report contains selected health statistics that are widely used by the Department of Health, other government agencies, and the public. This information has proven to be useful in determining trends in health status, for planning health care services and for making decisions about public health programs. It also fulfills diverse requirements in the business community and academic research.

Vital statistics data are compiled and maintained under the direction of the Director of the Health Statistics Office (HSO). The data are analyzed by staff from the HSO. Data from HSO can be found in the following sections: Natality, Infant Mortality, Mortality, Induced Abortion, Marriage and Divorce, Health Status Profiles, and Health Status Maps.

Infectious disease data are collected, compiled, and analyzed within the Office of Disease Prevention. Data on communicable diseases can be found in the Infectious Disease section of the report.

Quick References

Pages

• Tables 2, & 4-7 – Number of Vital Events by County	6-7 and 10-17
• Figures 6, 44, & 46 – Graphs Comparing State and National Rates	40, 98, 99
• Tables 8, 32, 43, 66 & 67 – Tables Comparing State and National Rates	21, 39, 55, 98,100
• Tables 68 & 69 – Disease Data by Region and Characteristics	104 – 106
• Maps 1 through 29 – Health Status Maps by County	197 - 225

The contacts listed in the Preface welcome suggestions for additional changes that would make the next compilation even more useful to those involved in improving the health of South Dakotans.

Table 1
Selected South Dakota Health Statistics, 2010-2011

EVENT		2011	2010	Percent Change
BIRTHS:	Number	11,834	11,795	+0.3
	Rate per 1,000 Population	14.5	14.5	0.0
Birth by Race				
	Number of White Births	8,921	9,245	-3.5
	White Birth Rate per 1,000	12.5	13.2	-5.3
	Number of American Indian Births	1,953	1,835	+6.4
	American Indian Birth Rate per 1,000	26.6	25.6	+3.9
Births (12 through 14 years olds)				
	Number	11	10	+10.0
	Rate per 1,000 12 through 14 year olds	0.3	0.3	0.0
Births (15 through 17 year olds)				
	Number	245	259	-5.4
	Rate per 1,000 15 through 17 year olds	7.4	7.7	-3.9
Births (15 through 19 year olds)				
	Number	963	973	-1.0
	Rate per 1,000 15 through 19 year olds	16.6	16.9	-1.8
Low Birth Weight Babies (Less than 2,500 grams)				
	Number	746	811	-8.0
	Rate per 1,000 Births	63.0	68.8	-8.4
DEATHS:	Number	7,271	7,087	+2.6
	Rate per 100,000 Population	882.3	870.4	+1.4
Deaths by Race				
	Number of White Deaths	666.2	6,471	+3.0
	White Death Rate per 100,000	933.5	925.2	+0.9
	Number of American Indian Deaths	527	534	-1.3
	American Indian Death Rate per 100,000	718.5	743.6	-3.4
Deaths (12 through 14 years of age)				
	Number	8	9	-11.1
	Rate per 100,000 12 through 14 year olds	24.8	28.0	-11.4
Deaths (15 through 17 years of age)				
	Number	20	20	0.0
	Rate per 100,000 15 through 17 year olds	60.5	59.4	+1.9
Deaths (15 through 19 year of age)				
	Number	34	48	-29.2
	Rate per 100,000 15 through 19 year olds	58.7	83.3	-29.5

Table 1 (continued)
Selected South Dakota Health Statistics, 2010-2011

EVENT	2011	2010	Percent Change
INFANT MORTALITY:			
Number	75	83	-9.6
Rate per 1,000 Births	6.34	7.04	-9.9
FETAL DEATHS:			
Number	71	74	-4.1
Rate per 1,000 Births + Fetal Deaths	5.96	6.23	-4.3
MARRIAGES: Number			
Rate per 1,000 Population	6,145	5,939	+3.5
	7.5	7.3	+2.7
DIVORCES: Number			
Rate per 1,000 Population	2,694	2,774	-2.9
	3.3	3.4	-2.9

Note: Birth and death data are for South Dakota residents.
 Marriage and divorce data reflect events occurring in South Dakota.
 Source: South Dakota Department of Health, Office of Health Statistics

Table 2
South Dakota Vital Statistics by County, 2011

	Births		Deaths		Infant Deaths		Fetal Deaths		Marriages		Divorces	
	Number	Rate	Number	Rate	Number	Rate	Number	Rate	Number	Rate	Number	Rate
South Dakota	11,834	14.4	7,271	882.3	75	6.34	71	5.96	6,145	7.5	2,694	3.3
County												
Aurora	39	14.5	29	1076.5	*	*	*	*	17	6.3	6	2.2
Beadle	294	16.8	201	1145.3	4	13.61	*	*	147	8.4	70	4.0
Bennett	76	22.1	31	900.9	*	*	*	*	33	9.6	*	*
Bon Homme	62	8.9	69	988.1	*	*	*	*	47	6.7	10	1.4
Brookings	385	11.9	182	564.8	3	7.79	3	7.73	178	5.5	93	2.9
Brown	485	13.2	355	964.1	3	6.19	3	6.15	239	6.5	138	3.7
Brule	69	13.1	56	1060.0	3	43.48	*	*	46	8.7	17	3.2
Buffalo	57	28.7	18	905.4	*	*	*	*	*	*	*	*
Butte	136	13.3	123	1198.9	*	*	*	*	89	8.7	31	3.0
Campbell	8	5.6	21	1471.6	*	*	*	*	6	4.2	*	*
Charles Mix	157	17.1	98	1064.3	*	*	4	24.84	58	6.3	12	1.3
Clark	52	14.3	62	1708.9	*	*	*	*	21	5.8	8	2.2
Clay	152	10.8	89	633.4	*	*	*	*	86	6.1	36	2.6
Codington	372	13.6	239	870.9	3	8.06	*	*	268	9.8	96	3.5
Corson	84	20.9	44	1094.0	*	*	*	*	30	7.5	*	*
Custer	77	9.2	82	983.4	*	*	*	*	137	16.4	32	3.8
Davison	262	13.3	205	1043.2	*	*	*	*	156	7.9	68	3.5
Day	59	10.3	86	1498.0	*	*	*	*	29	5.1	10	1.7
Deuel	48	11.0	43	986.5	*	*	*	*	31	7.1	13	3.0
Dewey	144	26.6	48	885.4	*	*	*	*	15	2.8	6	1.1
Douglas	36	12.1	58	1951.5	*	*	*	*	20	6.7	5	1.7
Edmunds	47	11.6	50	1232.7	*	*	*	*	20	4.9	12	3.0
Fall River	49	7.0	113	1618.7	*	*	*	*	62	8.9	20	2.9
Faulk	28	11.8	23	971.7	*	*	*	*	20	8.4	3	1.3
Grant	69	9.5	72	993.1	*	*	*	*	67	9.2	22	3.0
Gregory	42	10.0	58	1375.7	*	*	*	*	36	8.5	6	1.4
Haakon	23	12.1	27	1415.8	*	*	*	*	8	4.2	3	1.6
Hamlin	107	17.9	78	1304.8	*	*	*	*	25	4.2	14	2.3
Hand	36	10.5	41	1197.8	*	*	*	*	24	7.0	10	2.9
Hanson	44	13.0	24	710.9	*	*	*	*	12	3.6	5	1.5
Harding	9	7.1	11	866.8	*	*	*	*	5	3.9	4	3.2
Hughes	237	13.7	147	850.1	*	*	*	*	109	6.3	64	3.7
Hutchinson	72	9.9	111	1529.6	*	*	*	*	33	4.5	16	2.2

Table 2 (continued)
South Dakota Vital Statistics by County, 2011

County	Births		Deaths		Infant Deaths		Fetal Deaths		Marriages		Divorces	
	Number	Rate	Number	Rate	Number	Rate	Number	Rate	Number	Rate	Number	Rate
Hyde	15	10.8	15	1076.0	*	*	*	*	7	5.02	3	2.2
Jackson	68	21.5	35	1104.4	*	*	*	*	14	4.4	3	0.9
Jerauld	24	11.5	32	1534.8	*	*	*	*	10	4.8	14	6.7
Jones	11	11.0	16	1595.2	*	*	*	*	6	6.0	5	5.0
Kingsbury	71	13.7	73	1409.5	*	*	*	*	27	5.2	10	1.9
Lake	133	11.5	101	873.2	*	*	*	*	64	5.5	22	1.9
Lawrence	213	8.8	201	826.8	*	*	*	*	466	19.2	109	4.5
Lincoln	781	16.7	216	461.6	*	*	3	3.83	147	3.1	156	3.3
Lyman	76	20.0	46	1208.6	*	*	*	*	16	4.2	4	1.1
McCook	66	26.9	68	2773.2	*	*	*	*	24	9.8	7	2.9
McPherson	24	5.2	37	804.9	*	*	*	*	9	2.0	6	1.3
Marshall	60	10.8	59	1061.9	*	*	*	*	20	3.6	10	1.8
Meade	314	12.3	165	645.9	*	*	*	*	216	8.5	107	4.2
Mellette	27	13.1	25	1209.5	*	*	*	*	21	10.2	*	*
Miner	24	10.2	37	1568.5	*	*	*	*	14	5.9	3	1.3
Minnehaha	2,779	16.2	1,301	757.5	13	4.68	15	5.37	1,398	8.1	662	3.9
Moody	86	13.3	49	756.8	*	*	*	*	43	6.6	16	2.5
Pennington	1,502	14.6	795	773.2	10	6.66	8	5.30	893	8.7	478	4.6
Perkins	29	9.7	57	1899.4	*	*	*	*	16	5.3	*	*
Potter	27	11.4	42	1776.6	*	*	*	*	18	7.6	*	*
Roberts	187	18.2	103	1001.4	3	16.04	*	*	100	9.7	19	1.8
Sanborn	28	11.7	34	1421.4	*	*	*	*	7	2.9	7	2.9
Shannon	344	24.7	109	782.6	4	11.63	7	19.94	6	0.4	*	*
Spink	72	11.1	73	1128.3	*	*	*	*	33	5.1	17	2.6
Stanley	43	14.3	22	732.8	*	*	*	*	25	8.3	7	2.3
Sully	18	13.1	8	581.8	*	*	*	*	5	3.64	5	3.6
Todd	313	31.9	81	824.7	4	12.78	*	*	15	1.5	*	*
Tripp	70	12.5	66	1175.4	*	*	*	*	25	4.5	10	1.8
Turner	89	10.7	105	1260.2	*	*	*	*	38	4.6	36	4.3
Union	169	11.5	107	730.3	*	*	*	*	151	10.3	46	3.1
Walworth	69	12.4	77	1381.2	*	*	*	*	50	9.0	15	2.7
Yankton	246	10.9	211	933.1	*	*	4	16	180	8.0	73	3.2
Ziebach	38	13.3	11	385.7	*	*	*	*	5	1.75	*	*

Note: Births, deaths, infant deaths, and fetal deaths are by county of residence; marriages and divorces are by county of occurrence. Birth, marriage, and divorce rates are per 1,000 population. Death rates are per 100,000 population. Infant mortality rates are per 1,000 live births. Fetal mortality rates are per 1,000 live births plus fetal deaths.

*Department of Health policy prohibits publishing vital events in cells with less than three events at a county level.

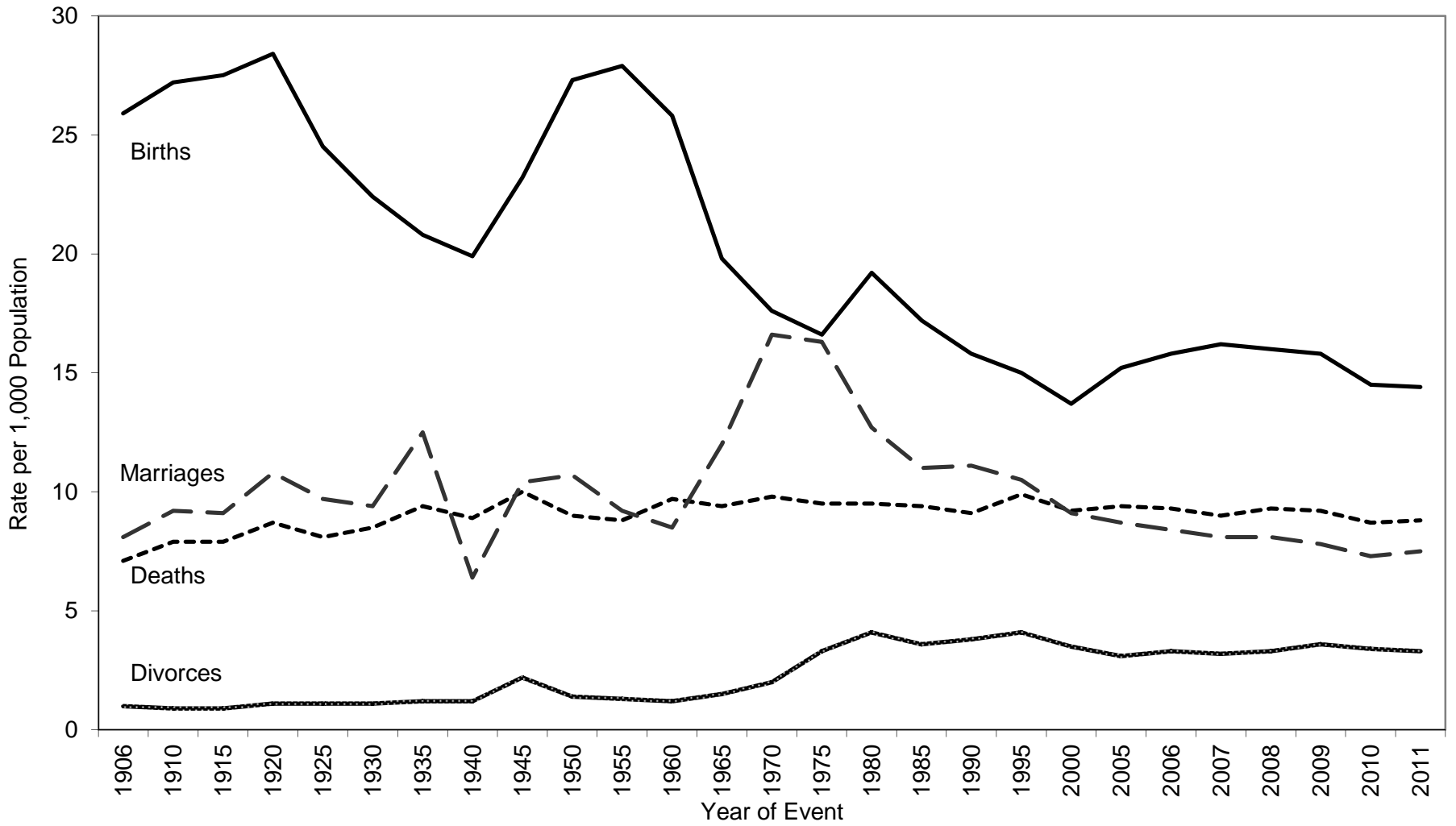
Source: South Dakota Department of Health, Office Health Statistics

**Table 3
Selected Records in Vital Statistics,
South Dakota, 2011**

NATALITY			
Oldest Father:	66	Oldest Mother:	50
Youngest Father:	15	Youngest Mother:	13
Smallest Live Birth:	1 lb. 2 oz.		
Largest Live Birth:	12 lbs. 10 oz.		
Most Popular Names for Infants			
<u>Boy's Names</u>	<u>Number</u>	<u>Girl's Names</u>	<u>Number</u>
Mason	82	Ava	70
Carter	58	Emma	59
Elijah	49	Sophia	51
William	49	Olivia	48
Jackson	48	Isabella	45
Logan	46	Brooklyn	44
Jacob	44	Emily	40
Noah	42	Grace	36
Michael	41	Harper	34
Benjamin	40	Addison	32
		Avery	32
MORTALITY			
Oldest Male Decedent:	108	Oldest Female Decedent:	109
MARRIAGE			
Oldest Groom:	91	Oldest Bride:	91
Youngest Groom:	16	Youngest Bride:	16
DIVORCE			
Longest Duration of a Marriage Ending in a Divorce:	56 Years		

Source: South Dakota Department of Health, Office of Health Statistics

Figure 1
Birth, Death, Marriage, and Divorce Rates for
South Dakota, 1906-2011



Source: South Dakota Department of Health, Office of Health Statistics

Table 4
South Dakota Resident Births by Resident County and Year of Birth, 2002-2011

	Year of Birth									
	2011	2010	2009	2008	2007	2006	2005	2004	2003	2002
Total	11,834	11,795	11,930	12,074	12,253	11,914	11,466	11,339	11,022	10,698
County										
Aurora	39	29	34	36	31	33	24	32	35	22
Beadle	294	274	268	277	261	201	177	195	174	192
Bennett	76	70	65	67	55	61	64	67	80	61
Bon Homme	62	67	53	73	70	60	72	53	65	51
Brookings	385	379	383	401	378	352	355	321	309	308
Brown	485	467	475	483	537	499	430	466	463	446
Brule	69	74	68	75	85	60	74	59	63	63
Buffalo	57	49	46	52	64	68	55	55	65	54
Butte	136	114	141	152	146	140	118	133	113	121
Campbell	8	16	18	17	10	11	6	9	7	13
Charles Mix	157	156	162	168	151	162	154	177	138	150
Clark	52	48	57	42	43	42	36	51	35	41
Clay	152	138	175	163	151	162	139	147	155	162
Codington	372	375	399	380	436	401	387	394	362	314
Corson	84	78	74	89	98	92	93	83	82	91
Custer	77	85	62	78	89	77	85	66	71	70
Davison	262	258	296	276	294	271	293	309	250	246
Day	59	68	65	60	73	66	68	64	66	63
Deuel	48	51	47	61	45	67	51	63	53	44
Dewey	144	118	119	155	162	155	154	160	156	149
Douglas	36	30	31	29	34	27	30	35	37	32
Edmunds	47	34	46	55	36	41	42	51	35	40
Fall River	49	55	46	55	54	71	62	76	74	59
Faulk	28	24	29	20	21	25	26	24	25	31
Grant	69	81	81	69	89	88	68	67	72	94
Gregory	42	50	43	40	47	37	44	46	38	30
Haakon	23	23	26	21	22	17	20	19	14	25
Hamlin	107	102	104	109	103	98	93	89	110	88
Hand	36	46	27	36	40	37	30	32	31	24
Hanson	44	55	44	48	42	61	47	50	60	45
Harding	9	15	10	17	12	11	9	12	8	18
Hughes	237	225	250	225	238	231	227	195	213	190
Hutchinson	72	81	80	85	60	74	88	72	85	81

Table 4 (continued)
South Dakota Resident Births by Resident County and Year of Birth, 2002-2011

County	Year of Birth									
	2011	2010	2009	2008	2007	2006	2005	2004	2003	2002
Hyde	15	12	12	7	9	13	15	24	21	18
Jackson	68	75	71	74	81	61	62	67	53	62
Jerauld	24	29	29	24	19	34	24	23	27	17
Jones	11	10	14	13	14	12	17	12	13	8
Kingsbury	71	51	63	77	54	55	52	52	54	49
Lake	133	128	130	103	144	137	123	135	122	109
Lawrence	213	252	257	257	290	290	239	265	237	245
Lincoln	781	808	825	763	785	746	687	584	504	426
Lyman	76	72	53	60	59	57	72	80	72	83
McCook	66	80	84	64	79	60	79	86	90	73
McPherson	24	18	18	14	18	28	16	20	20	37
Marshall	60	50	59	47	54	52	50	53	39	28
Meade	314	334	312	372	350	377	390	341	344	407
Mellette	27	38	35	36	50	46	40	43	37	31
Miner	24	19	28	30	27	28	31	28	26	24
Minnehaha	2,779	2,749	2,761	2,841	2,746	2,624	2,587	2,548	2,485	2,482
Moody	86	89	90	79	88	91	92	97	80	74
Pennington	1,502	1,549	1,564	1,563	1,599	1,584	1,564	1,523	1,552	1,385
Perkins	29	32	28	40	24	31	34	29	24	37
Potter	27	24	21	24	33	12	27	26	20	24
Roberts	187	159	169	172	170	160	175	159	154	125
Sanborn	28	24	24	25	37	21	21	29	27	25
Shannon	344	370	344	367	396	419	372	347	385	366
Spink	72	78	60	93	75	74	78	84	79	91
Stanley	43	41	39	36	37	45	39	39	43	37
Sully	18	18	19	12	23	24	21	25	17	24
Todd	313	242	274	298	275	283	257	253	257	281
Tripp	70	61	66	70	67	87	64	84	65	73
Turner	89	101	86	96	97	104	89	80	86	83
Union	169	179	181	159	191	186	173	161	159	201
Walworth	69	56	73	53	63	70	64	63	78	68
Yankton	246	258	261	254	283	267	242	266	274	237
Ziebach	38	54	56	37	38	38	49	41	34	50

Note: *Department of Health policy prohibits publishing vital events in cells with less than three events at a county level.
 Failure of births to add to the total is due to unknown county.

Source: South Dakota Department of Health, Office of Health Statistics

Table 5
South Dakota Resident Deaths by Resident County and Year of Death, 2002-2011

	Year of Death									
	2011	2010	2009	2008	2007	2006	2005	2004	2003	2002
Total	7,271	7,087	6,913	7,056	6,800	7,038	7,074	6,811	7,109	6,886
County										
Aurora	29	26	31	30	31	27	35	33	39	43
Beadle	201	187	205	189	193	191	212	199	188	189
Bennett	31	37	30	25	39	23	25	31	33	34
Bon Homme	69	69	83	71	100	79	80	69	82	79
Brookings	182	165	203	213	183	191	149	187	190	179
Brown	355	396	336	350	357	354	333	334	355	341
Brule	56	47	54	43	52	64	59	50	62	51
Buffalo	18	16	24	20	18	17	15	18	13	14
Butte	123	100	92	102	110	95	106	82	102	106
Campbell	21	11	14	14	9	18	19	12	13	14
Charles Mix	98	99	122	91	92	96	117	96	109	95
Clark	62	56	52	42	34	46	68	44	44	45
Clay	89	105	90	67	83	91	82	100	98	91
Codington	239	237	238	242	253	230	234	222	217	218
Corson	44	40	52	36	38	44	38	45	36	35
Custer	82	82	73	62	88	76	82	67	60	75
Davison	205	190	157	207	203	187	168	208	207	192
Day	86	65	95	69	74	94	82	91	102	96
Deuel	43	36	42	62	51	66	49	60	51	46
Dewey	48	56	48	53	57	53	66	71	49	50
Douglas	58	50	41	44	42	33	52	38	40	46
Edmunds	50	45	50	47	47	57	52	57	45	48
Fall River	113	104	110	104	106	107	114	111	115	116
Faulk	23	28	20	34	30	38	19	29	31	29
Grant	72	66	89	80	83	94	95	102	93	92
Gregory	58	74	56	89	54	74	65	66	72	72
Haakon	27	22	15	23	26	32	25	26	26	27
Hamlin	78	60	73	71	80	76	79	74	61	80
Hand	41	43	28	42	36	44	37	50	49	48
Hanson	24	22	19	25	20	19	26	15	15	20
Harding	11	12	8	8	6	8	11	6	12	8
Hughes	147	136	164	143	130	158	152	118	150	163
Hutchinson	111	113	105	123	92	110	109	129	133	131

Table 5 (continued)
South Dakota Resident Deaths by Resident County and Year of Death, 2002-2011

County	Year of Death									
	2011	2010	2009	2008	2007	2006	2005	2004	2003	2002
Hyde	15	20	18	22	25	23	21	25	28	21
Jackson	35	35	29	30	37	39	26	33	26	31
Jerauld	32	27	28	27	25	30	27	31	28	29
Jones	16	5	7	6	14	6	9	12	11	3
Kingsbury	73	79	68	89	76	78	83	93	97	105
Lake	101	113	107	105	93	116	91	102	104	103
Lawrence	201	208	203	196	201	234	187	196	201	201
Lincoln	216	181	166	203	191	226	229	211	182	171
Lyman	46	28	34	21	25	28	29	30	34	33
McCook	68	74	65	71	76	71	70	75	72	73
McPherson	37	33	83	35	34	36	49	37	39	35
Marshall	59	73	25	46	46	53	60	49	46	61
Meade	165	157	178	220	214	223	236	228	182	174
Mellette	25	25	22	24	22	16	24	32	22	20
Miner	37	38	33	37	32	37	39	32	34	42
Minnehaha	1,301	1,273	1,228	1,233	1,151	1,150	1,146	1,016	1,156	1,054
Moody	49	57	54	46	56	69	66	56	60	49
Pennington	795	758	699	716	616	645	693	620	732	704
Perkins	57	48	32	43	52	46	41	36	39	34
Potter	42	28	40	47	32	37	44	33	49	47
Roberts	103	113	105	125	101	94	128	126	113	117
Sanborn	34	18	21	17	21	29	38	24	40	22
Shannon	109	131	108	112	117	121	123	133	129	124
Spink	73	72	89	77	85	75	79	68	89	85
Stanley	22	18	13	26	7	25	19	14	11	20
Sully	8	10	9	8	9	11	11	18	9	9
Todd	81	68	87	82	81	73	63	79	79	74
Tripp	66	81	79	66	68	81	85	65	80	87
Turner	105	90	92	97	105	104	109	100	118	103
Union	107	120	106	113	101	100	93	95	88	92
Walworth	77	76	60	71	58	86	92	98	76	83
Yankton	211	211	189	206	197	175	199	200	225	193
Ziebach	11	24	17	18	15	9	10	4	18	14

Note: *Department of Health policy prohibits publishing vital events in cells with less than three events at a county level.
Source: South Dakota Department of Health, Office of Health Statistics

Table 6
Marriages Occurring in South Dakota by County of Occurrence and Year of Marriage, 2002-2011

	Year of Marriage									
	2011	2010	2009	2008	2007	2006	2005	2004	2003	2002
Total	6,145	5,939	5,887	6,148	6,138	6,303	6,551	6,485	6,427	6,585
County										
Aurora	17	8	13	16	13	28	18	20	15	18
Beadle	147	138	128	137	129	117	118	135	125	106
Bennett	33	23	17	16	22	26	15	16	17	16
Bon Homme	47	51	30	54	40	42	44	46	34	51
Brookings	178	194	209	195	202	178	246	210	209	212
Brown	239	224	231	225	277	270	244	281	285	288
Brule	46	48	48	52	42	63	57	68	50	54
Buffalo	*	3	3	4	8	*	*	4	4	7
Butte	89	77	60	55	62	51	66	44	51	67
Campbell	6	7	9	7	6	*	15	7	8	5
Charles Mix	58	42	50	54	66	55	53	71	48	79
Clark	21	12	23	16	24	18	20	24	18	24
Clay	86	75	74	90	101	105	107	92	104	93
Codington	268	236	228	245	262	290	261	285	302	295
Corson	30	19	30	21	22	19	27	22	26	36
Custer	137	131	115	123	113	101	109	107	103	102
Davison	156	153	138	153	162	167	164	146	161	164
Day	29	26	36	40	33	35	41	36	38	51
Deuel	31	31	27	39	30	34	30	21	24	36
Dewey	15	7	17	21	21	12	16	13	25	25
Douglas	20	21	25	20	20	21	24	17	15	22
Edmunds	20	17	20	25	24	11	16	25	16	18
Fall River	62	52	51	75	68	68	85	65	66	74
Faulk	20	11	13	8	10	5	17	16	19	8
Grant	67	58	78	88	75	69	84	80	81	81
Gregory	36	30	24	23	23	34	32	30	32	32
Haakon	8	5	9	18	12	14	14	16	13	12
Hamlin	25	37	33	32	36	37	32	39	39	44
Hand	24	20	21	8	19	16	36	16	17	23
Hanson	12	15	14	8	12	21	16	22	11	12
Harding	5	11	8	*	3	10	0	6	9	9
Hughes	109	98	124	137	120	129	136	134	144	124
Hutchinson	33	34	34	31	36	37	40	49	54	33

Table 6 (continued)

Marriages Occurring in South Dakota by County of Occurrence and Year of Marriage, 2002-2011

County	Year of Marriage									
	2011	2010	2009	2008	2007	2006	2005	2004	2003	2002
Hyde	7	6	*	5	4	7	5	5	13	8
Jackson	14	18	9	8	9	12	11	14	15	8
Jerauld	10	10	10	10	12	8	12	13	20	12
Jones	6	5	6	6	*	7	4	10	5	5
Kingsbury	27	31	34	36	28	37	36	42	30	41
Lake	64	81	93	71	98	97	77	77	77	80
Lawrence	466	454	461	485	485	532	502	466	421	400
Lincoln	147	168	149	173	157	158	149	160	106	128
Lyman	16	21	15	17	29	23	26	18	16	20
McCook	24	24	23	31	37	34	38	29	41	33
McPherson	9	7	7	10	5	9	12	9	14	8
Marshall	20	33	27	31	19	33	25	29	41	27
Meade	216	218	208	188	219	227	272	307	270	261
Mellette	21	30	21	18	28	22	25	28	33	29
Miner	14	16	13	8	11	7	16	11	12	19
Minnehaha	1,398	1,321	1,333	1,324	1,254	1,336	1,363	1,276	1,268	1,325
Moody	43	37	43	49	36	61	55	47	31	34
Pennington	893	891	850	932	894	883	977	998	999	1,048
Perkins	16	13	11	17	24	18	25	22	25	12
Potter	18	8	18	11	21	13	12	17	11	16
Roberts	100	104	104	113	92	124	107	113	142	132
Sanborn	7	8	6	9	8	10	13	11	18	12
Shannon	6	6	5	7	8	6	12	3	5	3
Spink	33	24	24	22	35	34	26	27	44	37
Stanley	25	20	28	16	10	17	21	28	19	20
Sully	5	*	*	6	7	3	6	9	3	11
Todd	15	19	22	24	22	19	21	18	23	21
Tripp	25	34	31	35	40	35	42	31	39	55
Turner	38	44	36	37	37	38	47	49	54	41
Union	151	189	176	185	191	183	203	228	255	286
Walworth	50	26	16	30	30	34	27	35	38	27
Yankton	180	155	162	190	189	185	192	186	171	194
Ziebach	5	3	*	6	4	4	7	6	5	11

Note: *Department of Health policy prohibits publishing vital events in cells with less than three events at a county level.

Source: South Dakota Department of Health, Office of Health Statistics

Table 7
Divorces Occurring in South Dakota by County of Occurrence and Year of Divorce, 2002-2011

	Year of Divorce									
	2011	2010	2009	2008	2007	2006	2005	2004	2003	2002
Total	2,694	2,774	2,686	2,459	2,438	2,465	2,354	2,358	2,502	2,561
County										
Aurora	6	4	9	6	8	4	7	5	6	6
Beadle	70	78	61	57	59	55	39	54	42	50
Bennett	*	*	5	*	7	*	4	4	7	7
Bon Homme	10	14	18	17	19	19	17	18	10	16
Brookings	93	91	75	75	65	79	75	72	74	98
Brown	138	146	116	103	114	110	105	133	110	125
Brule	17	10	19	13	14	10	17	15	9	13
Buffalo	*	*	*	*	3	*	*	0	*	*
Butte	31	40	51	39	37	34	43	41	45	46
Campbell	*	5	*	*	*	4	0	*	*	3
Charles Mix	12	13	9	9	9	12	5	12	15	18
Clark	8	17	7	6	6	11	11	9	12	11
Clay	36	35	44	34	34	31	40	41	26	37
Codington	96	125	93	109	102	91	96	84	104	97
Corson	*	5	*	*	0	*	3	*	*	0
Custer	32	31	33	23	28	25	32	28	29	28
Davison	68	68	56	69	70	72	60	60	68	73
Day	10	12	16	11	7	19	12	10	13	11
Deuel	13	12	9	13	10	12	11	9	10	6
Dewey	6	4	*	*	0	*	*	6	4	5
Douglas	5	5	6	6	7	3	4	9	3	8
Edmunds	12	8	13	5	8	11	10	6	8	7
Fall River	20	30	25	39	17	33	27	28	23	29
Faulk	3	3	6	3	*	*	*	3	5	4
Grant	22	10	18	16	18	28	11	16	38	23
Gregory	6	5	6	5	8	13	13	9	8	12
Haakon	3	6	7	*	5	*	7	6	6	6
Hamlin	14	14	10	5	9	10	15	8	18	13
Hand	10	8	12	9	7	5	5	3	6	4
Hanson	5	*	4	5	8	3	3	5	9	8
Harding	4	*	*	5	*	0	*	4	3	5
Hughes	64	61	62	42	66	75	60	49	63	74
Hutchinson	16	15	10	12	0	3	16	15	13	10

Table 7 (continued)
Divorces Occurring in South Dakota by County of Occurrence and Year of Divorce, 2002-2011

County	Year of Divorce									
	2011	2010	2009	2008	2007	2006	2005	2004	2003	2002
Hyde	3	3	*	*	*	4	*	*	*	3
Jackson	3	3	6	5	*	9	*	8	*	4
Jerauld	14	6	5	*	*	3	0	*	8	3
Jones	5	*	5	*	3	*	0	*	*	4
Kingsbury	10	16	17	8	6	16	18	13	18	17
Lake	22	36	28	28	22	26	28	26	17	24
Lawrence	109	95	82	68	77	90	83	102	100	118
Lincoln	156	128	115	139	117	111	79	80	94	69
Lyman	4	4	10	7	3	9	*	3	10	4
McCook	7	15	16	15	19	13	15	13	15	9
McPherson	6	10	4	5	5	6	4	*	5	*
Marshall	10	13	8	8	8	11	10	7	10	11
Meade	107	83	128	93	102	78	120	97	112	107
Mellette	*	4	*	*	*	*	3	6	3	5
Miner	3	7	7	6	6	9	6	3	3	7
Minnehaha	662	693	619	637	640	596	549	576	595	581
Moody	16	14	16	17	14	15	12	17	17	16
Pennington	478	515	548	463	431	436	400	423	442	455
Perkins	*	*	*	*	0	6	3	12	8	8
Potter	*	4	7	8	7	3	9	0	3	5
Roberts	19	18	11	18	17	21	26	12	19	12
Sanborn	7	9	8	5	4	7	4	3	3	7
Shannon	*	*	3	*	4	*	*	*	*	*
Spink	17	15	23	11	8	16	19	15	18	20
Stanley	7	14	9	4	8	11	4	9	8	5
Sully	5	5	5	*	5	3	7	3	6	4
Todd	*	3	3	*	3	6	6	3	5	4
Tripp	10	9	18	7	12	17	11	11	18	20
Turner	36	21	28	24	19	19	31	25	22	19
Union	46	46	53	53	55	46	55	40	53	57
Walworth	15	14	21	12	7	17	19	12	19	11
Yankton	73	89	72	65	80	75	74	67	72	95
Ziebach	*	*	*	*	0	0	3	*	*	0

Note: *Department of Health policy prohibits publishing vital events in cells with less than three events at a county level.
Source: South Dakota Department of Health, Office of Health Statistics

