

Marriage & Divorce

An Overview: 2008

Marriages:

Number Occurring in S.D.	6,148
S.D. Rate per 1,000 Population	8.1
U.S. Rate per 1,000 Population *	7.1*
Age of Bride for South Dakota Residents (Years)	
Mean	30
Median	26
Mode	23
Range	
Lower	16
Upper	80
Age of Groom for South Dakota Residents (Years)	
Mean	32
Median	28
Mode	23
Range	
Lower	16
Upper	89

Divorces and Annulments:

Number Occurring in S.D.	2,459
S.D. Rate Per 1,000 Population	3.3
U.S. Rate per 1,000 Population*	3.5*
Years Married Before Termination in S.D.	
Mean	10
Median	7
Mode	3
Range	
Lower	Less Than 1
Upper	61

Note: *U.S. data are provisional.

Source: South Dakota Department of Health, Office of Data, Statistics, and Vital Records

Marriages in South Dakota

In the last 30 years, marriage rates in South Dakota reached their peak in 1979 with a rate of 13.0. In 2008, the South Dakota marriage rate was 8.1, the same as 2007. On the following page is Table 75, which

provides the United States and South Dakota marriage rates from 1979 through 2008. Figure 27, on the next page, illustrates the changes in these rates over this time frame.

Table 75
Marriages and Marriage Rates by Occurrence,
South Dakota and United States, 1979-2008

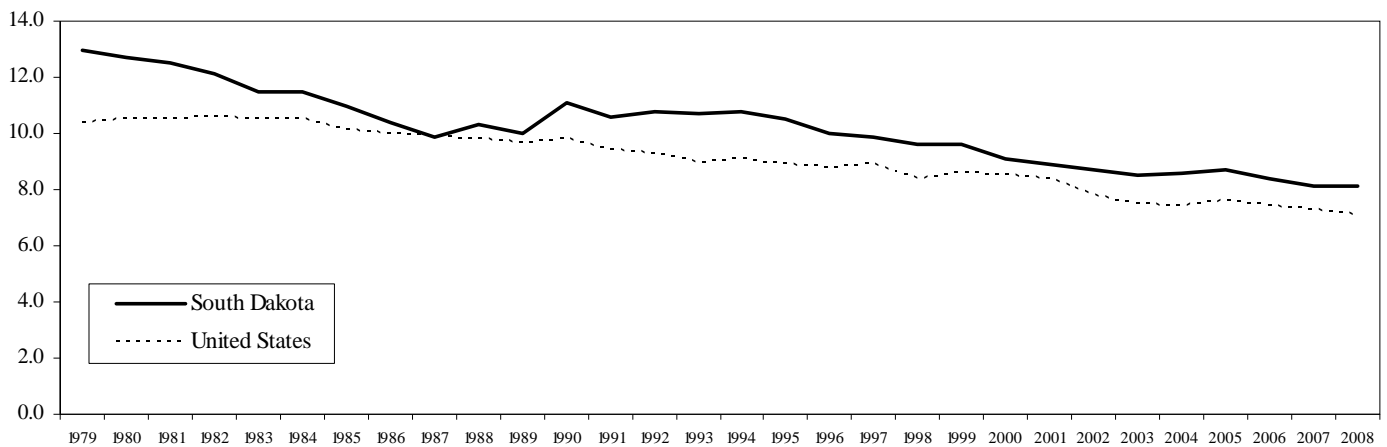
Year	United States		South Dakota	
	Number	Crude Rate	Number	Crude Rate
2008	2,162,000	7.1	6,148	8.1
2007	2,197,000	7.3	6,138	8.1
2006	2,193,000	7.4	6,303	8.4
2005	2,249,000	7.6	6,551	8.7
2004	2,279,000	7.8	6,485	8.6
2003	2,187,000	7.5	6,427	8.5
2002	2,254,000	7.8	6,585	8.7
2001	2,327,000	8.4	6,719	8.9
2000	2,329,000	8.5	6,882	9.1
1999	2,358,000	8.6	6,863	9.9
1998	2,256,000	8.4	6,705	9.6
1997	2,384,000	8.9	6,867	9.9
1996	2,344,000	8.8	6,991	10.0
1995	2,336,000	8.9	7,283	10.5
1994	2,362,000	9.1	7,528	10.8
1993	2,334,000	9.0	7,413	10.7
1992	2,362,000	9.3	7,549	10.8
1991	2,371,000	9.4	7,374	10.6
1990	2,443,489	9.8	7,716	11.1
1989	2,403,268	9.7	7,108	10.0
1988	2,395,926	9.8	7,328	10.3
1987	2,403,378	9.9	6,996	9.9
1986	2,407,099	10.0	7,386	10.4
1985	2,412,625	10.1	7,793	11.0
1984	2,477,192	10.5	8,057	11.5
1983	2,445,604	10.5	8,013	11.5
1982	2,456,278	10.6	8,353	12.1
1981	2,422,145	10.5	8,662	12.5
1980	2,390,252	10.5	8,800	12.7
1979	2,331,337	10.4	8,978	13.0

Note: Beginning in 1991, the United States data are based on estimates.

Source: National Center for Health Statistics

South Dakota Department of Health, Office of Data, Statistics, and Vital Records

Figure 27
Marriages Occurring in South Dakota and United States, 1979-2008



Note: Beginning in 1991, the United States data are based on estimates.

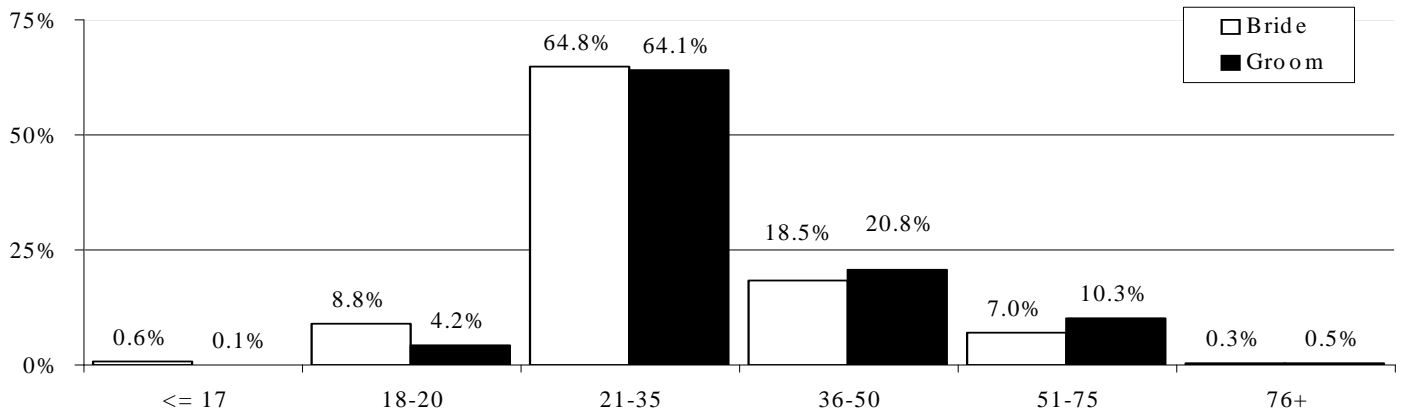
Source: National Center for Health Statistics

South Dakota Department of Health, Office of Data, Statistics, and Vital Records

For South Dakota residents, the mean or average age of brides in 2008 was 30 years of age, the median age was 26, and the modal age was 23. The age of brides in 2008 ranged from a low of 16 to a high of

80. The mean age of South Dakota resident grooms in 2008 was 32 years of age, the median age was 28, and the modal age was 23. The age of grooms in 2008 ranged from a low of 16 to a high of 89.

Figure 28
Brides and Grooms by Age Group for Marriages Occurring in South Dakota, 2008



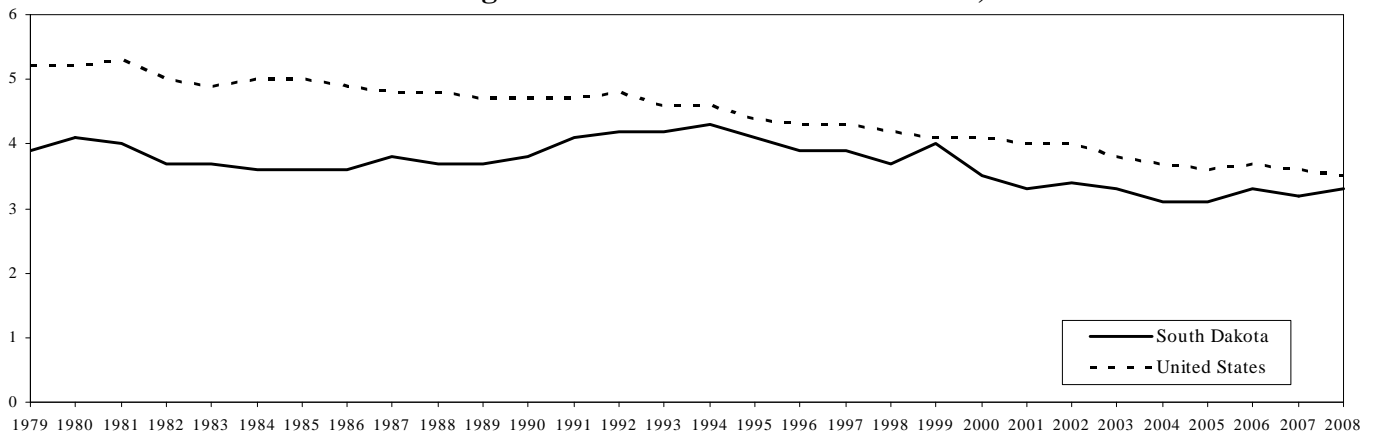
Source: South Dakota Department of Health, Office of Data, Statistics, and Vital Records

Divorces in South Dakota

For comparisons over time, Figure 29, below, illustrates the rates for South Dakota and national divorce rates from 1979 to 2008. Table 78, on the next page, lists the rates for South Dakota and the United

States. As displayed, the 2008 South Dakota divorce rate was 3.3 divorces per 1,000 population, which increased slightly from 2007.

Figure 29
Divorces Occurring in South Dakota and United States, 1979-2008



Note: Beginning in 1991, the United States data are based on estimates.

Source: South Dakota Department of Health, Office of Data, Statistics, and Vital Records

Table 76
Number and Rate of Divorces and Annulments by Occurrence,
South Dakota and United States, 1979-2008

Year	United States		South Dakota	
	Number	Crude Rate	Number	Crude Rate
2008	**	3.5	2,459	3.3
2007	**	3.6	2,438	3.2
2006	**	3.7	2,465	3.3
2005	**	3.6	2,354	3.1
2004	**	3.7	2,358	3.1
2003	**	3.8	2,502	3.3
2002	**	4.0	2,561	3.4
2001	**	4.0	2,522	3.3
2000	**	4.1	2,678	3.5
1999	**	4.1	2,750	4.0
1998	1,135,000	4.2	2,581	3.7
1997	1,163,000	4.3	2,738	3.9
1996	1,150,000	4.3	2,749	3.9
1995	1,169,000	4.4	2,879	4.1
1994	1,191,000	4.6	2,969	4.3
1993	1,187,000	4.6	2,895	4.2
1992	1,215,000	4.8	2,932	4.2
1991	1,187,000	4.7	2,859	4.1
1990	1,182,000	4.7	2,651	3.8
1989	1,157,000	4.7	2,624	3.7
1988	1,167,000	4.8	2,649	3.7
1987	1,166,000	4.8	2,696	3.8
1986	1,178,000	4.9	2,585	3.6
1985	1,190,000	5.0	2,566	3.6
1984	1,169,000	5.0	2,498	3.6
1983	1,158,000	4.9	2,556	3.7
1982	1,170,000	5.0	2,564	3.7
1981	1,213,000	5.3	2,772	4.0
1980	1,189,000	5.2	2,811	4.1
1979	1,181,000	5.2	2,665	3.9

Note: **U.S. data are not available.

Crude divorce rates are per 1,000 population.

Beginning in 1991, the United States data are based on estimates.

Source: National Center for Health Statistics

South Dakota Department of Health, Office of Data, Statistics, and Vital Records

For South Dakota divorces, the mean or average duration of the marriages ending in divorce during 2008 was ten years, the median duration was seven years, and the

modal duration was three years. The length of time before terminating the marriage ranged from less than one year to 61 years for 2008 South Dakota divorces.