



Monthly health and disease summary

February 2011

South Dakota Department of Health

<http://doh.sd.gov>



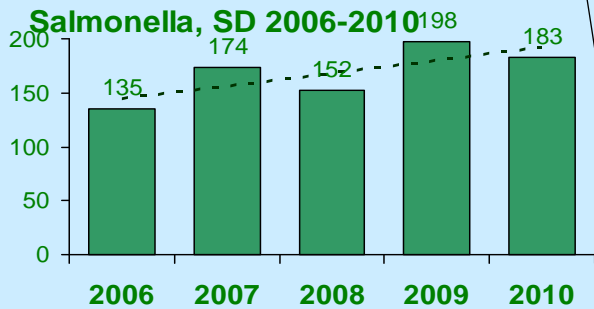
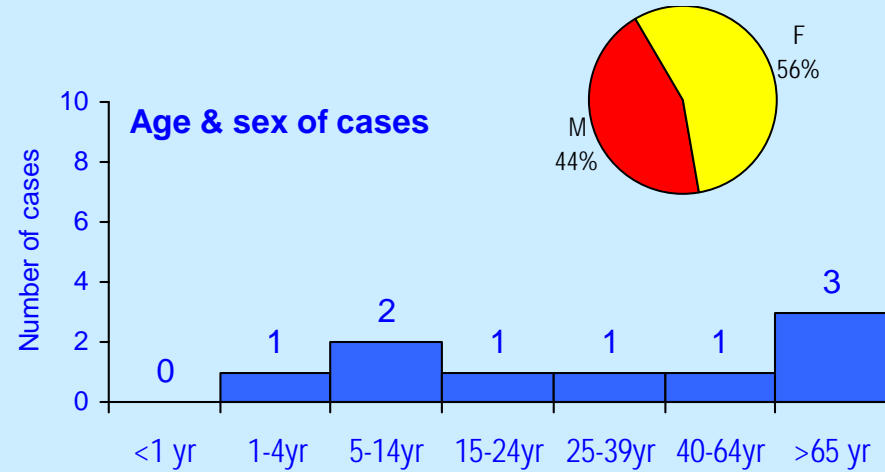
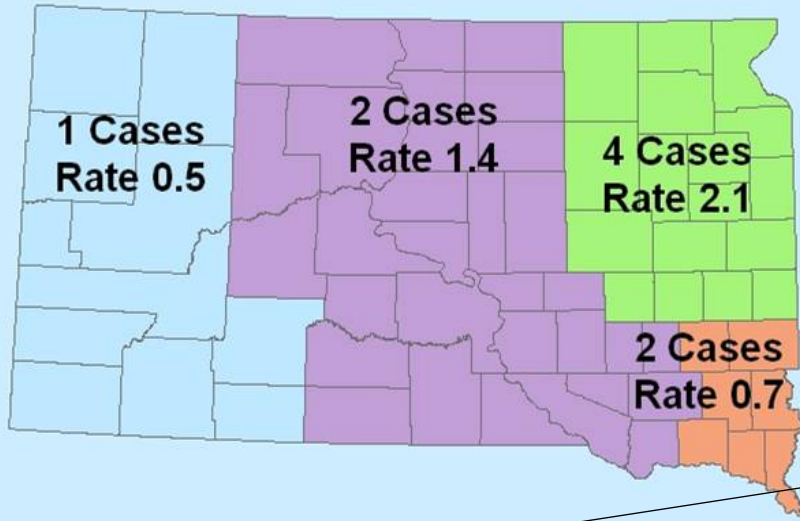
SOUTH DAKOTA
DEPARTMENT OF HEALTH

South Dakota infectious disease summary 2011

Diseases/Agent	Cases year-to-date	Rate (cases per 100,000 population)	5-yr median cases (2005-2009)	Percent change
Campylobacter	16	2.0	19	-16%
Chlamydia	490	60.3	446	+10%
Cryptosporidiosis	4	0.5	7	-43%
E. coli, shiga toxin-producing	0	0.0	1	-100%
Giardiasis	9	1.1	11	-18%
Gonorrhea	64	7.9	51	+25%
HIV AIDS	4	0.5	5	-20%
MRSA, invasive	7	0.9	12	-42%
Pertussis	1	0.1	4	-75%
Rabies, animal	6	NA	3	+100%
Salmonella	9	1.1	25	-64%
Tuberculosis	2	0.2	2	0%

Salmonellosis, South Dakota

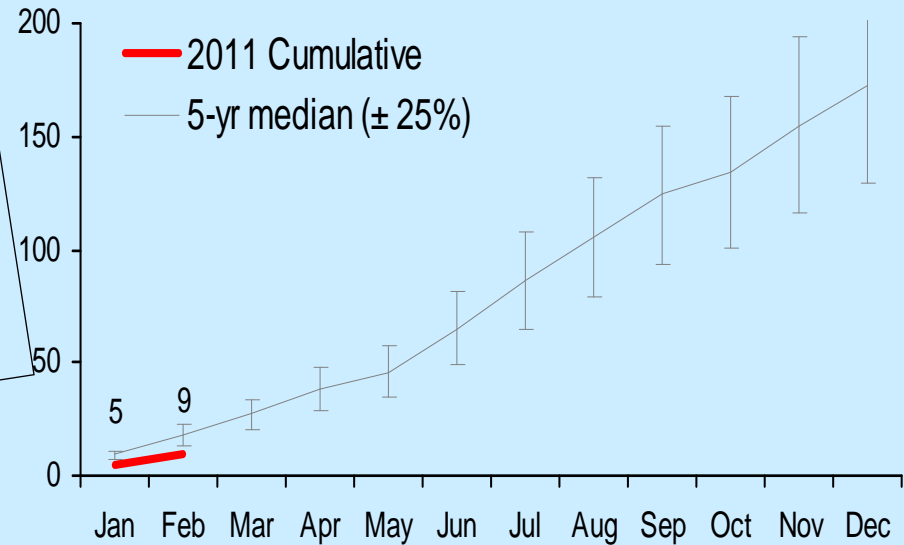
Salmonellosis
South Dakota 9 Cases
 (Rate 1.1 per 100,000 population)



Salmonella serotypes

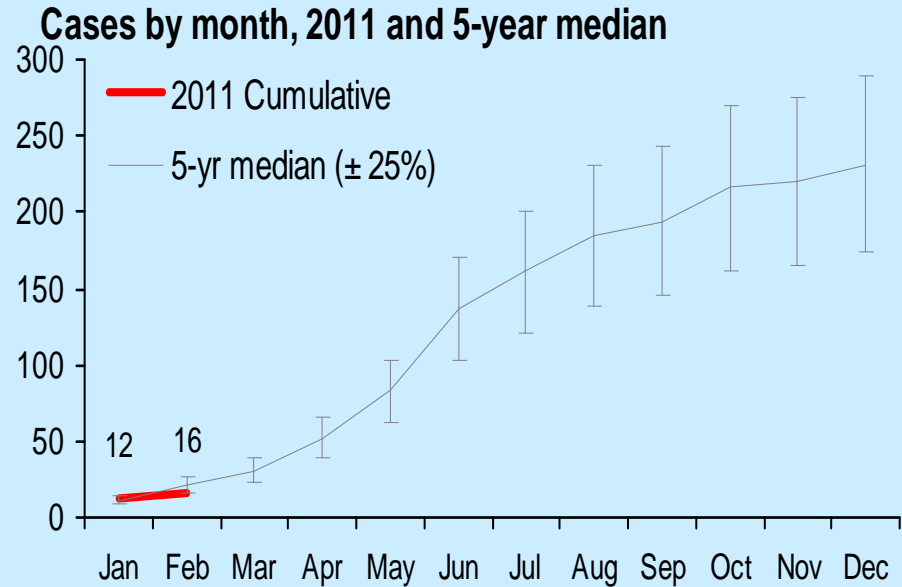
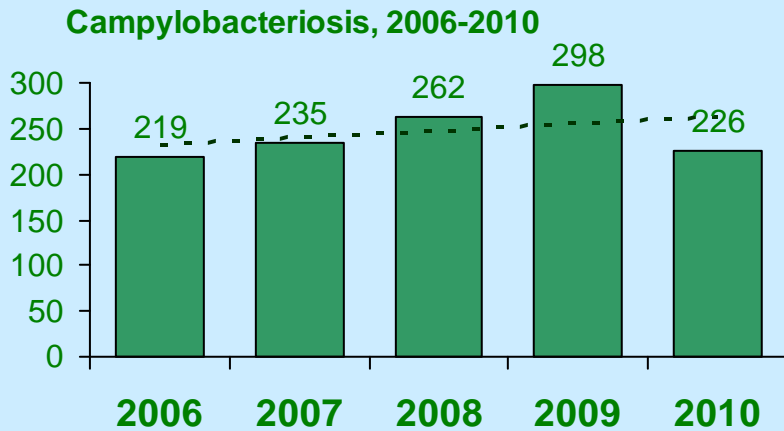
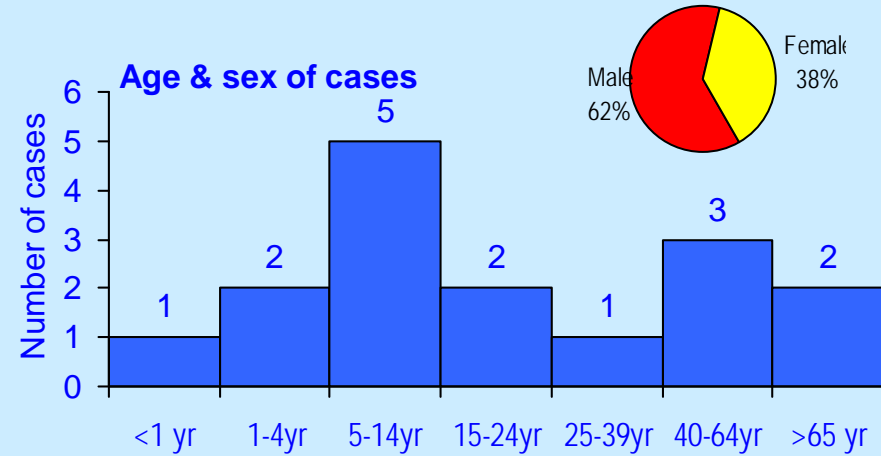
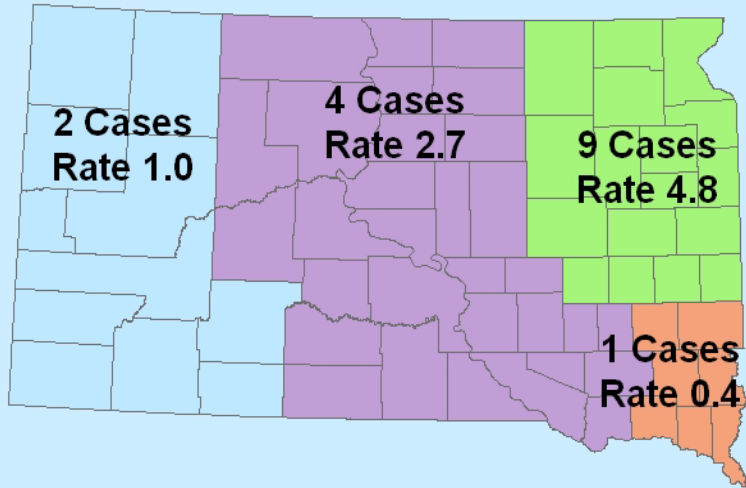
- S. Enteritidis 1
- S. Heidelberg 1
- S. Newport 1
- S. Oranienberg 2
- S. Typhimurium 2
- All others 2

Cases by month, 2011 and 5-year median



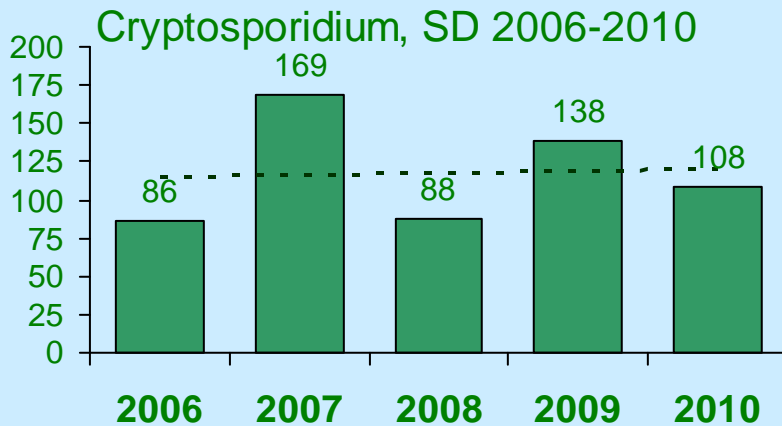
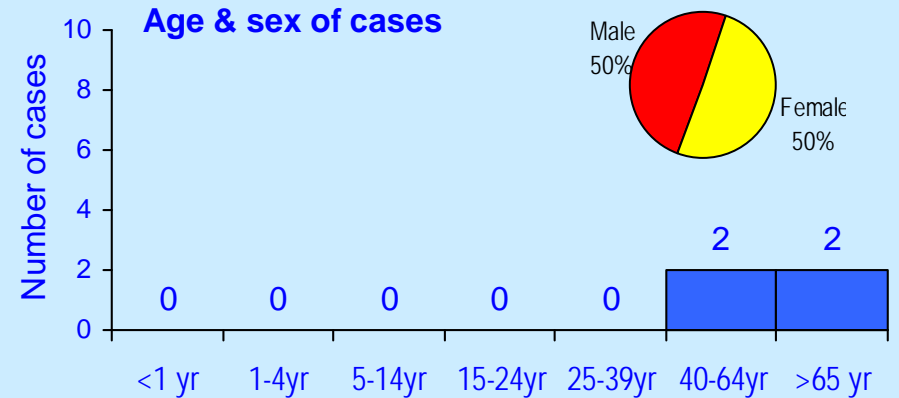
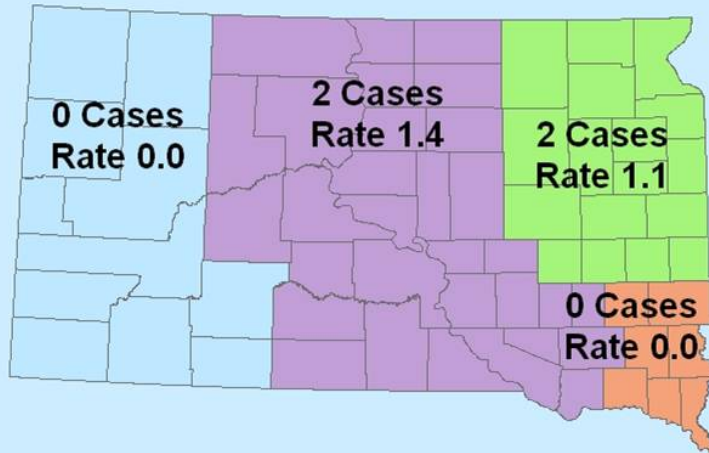
Campylobacteriosis, South Dakota

Campylobacteriosis
South Dakota 16 Cases
(Rate 2.0 per 100,000 population)

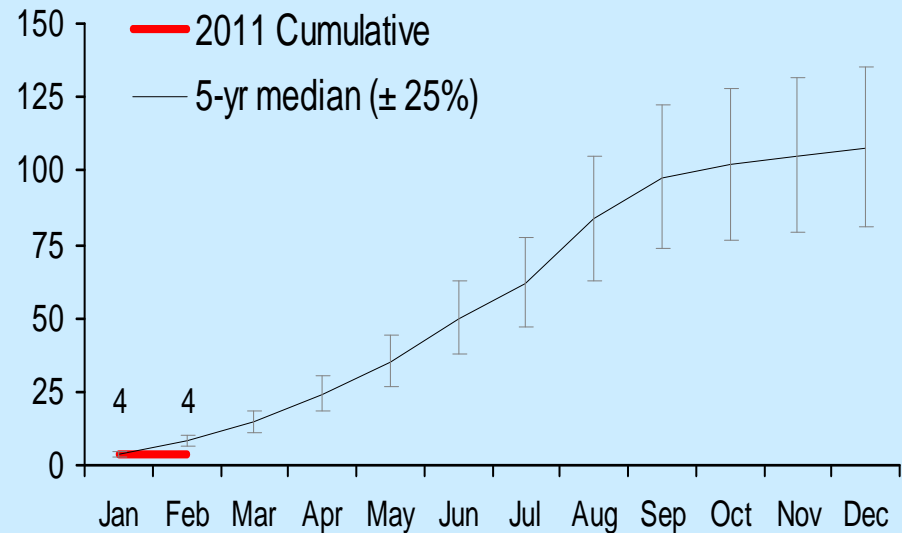


Cryptosporidiosis, South Dakota

Cryptosporidiosis
South Dakota 4 Cases
 (Rate 0.5 per 100,000 population)



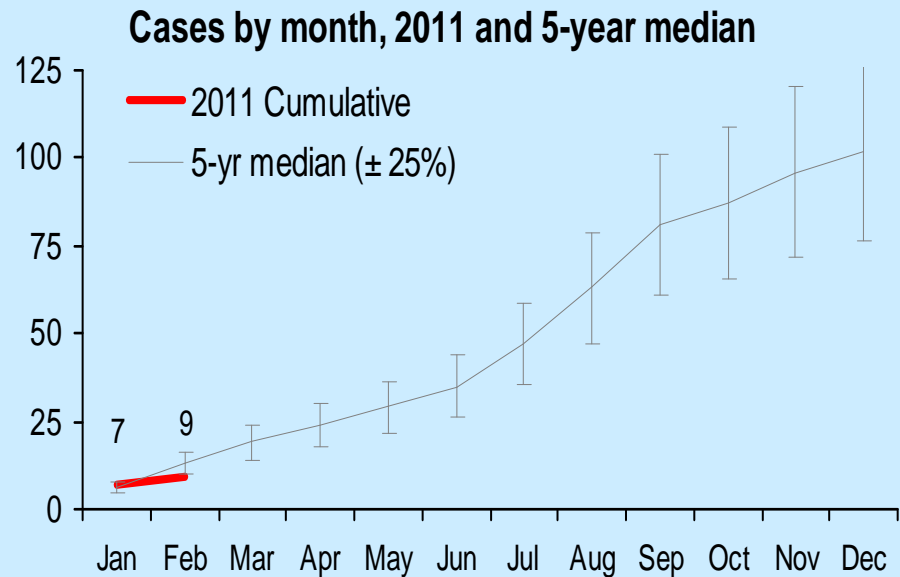
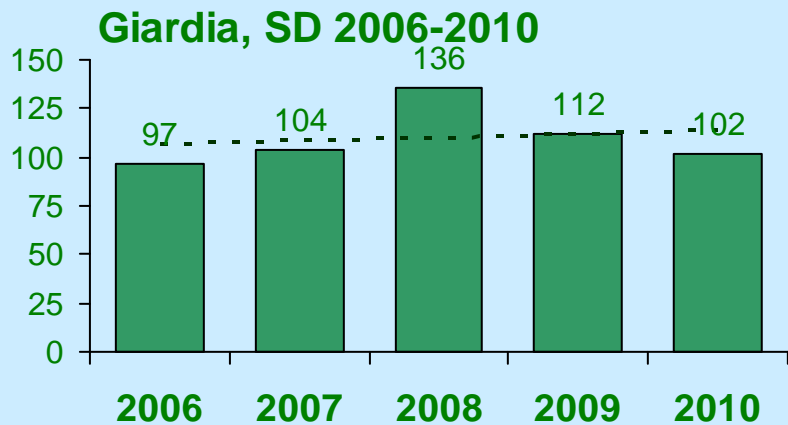
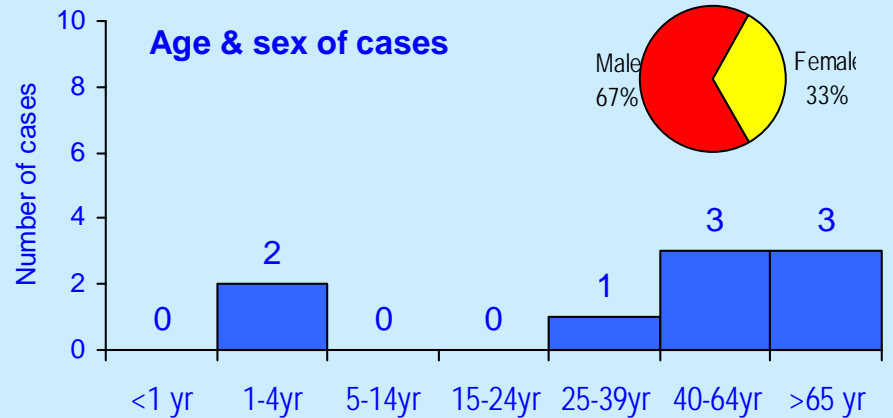
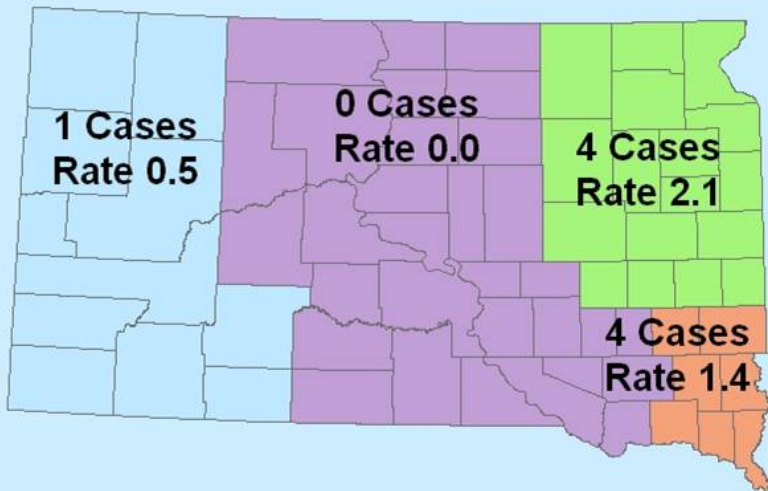
Cases by month, 2011 and 5-year median



Cryptosporidiosis fact sheet:
<http://doh.sd.gov/diseasefacts>

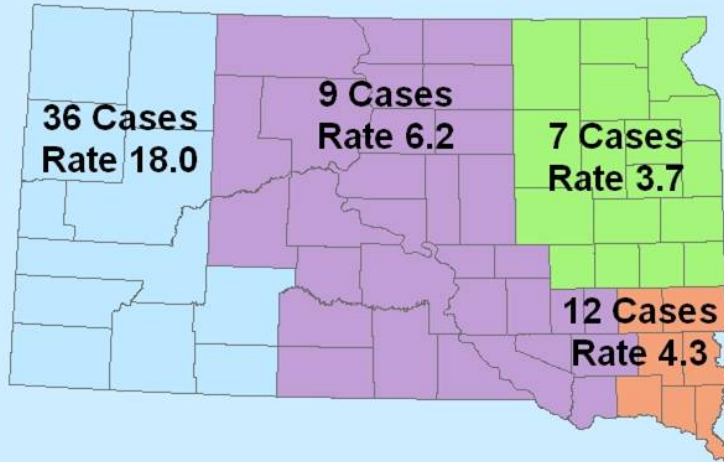
Giardiasis. South Dakota

Giardiasis
South Dakota 9 Cases
(Rate 1.1 per 100,000 population)

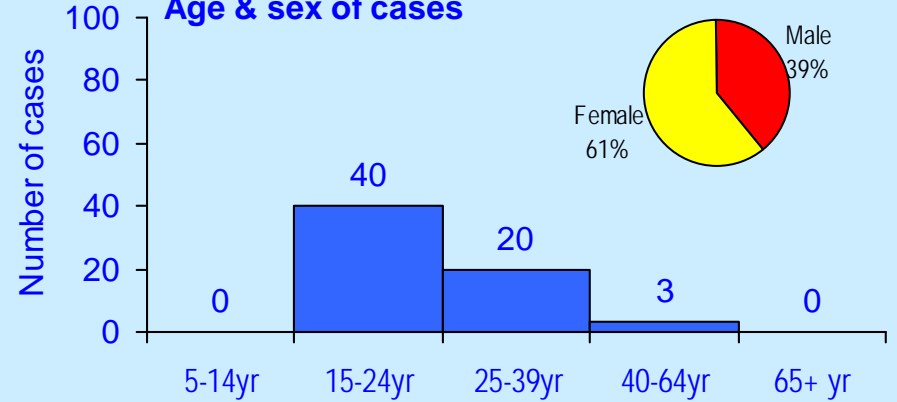


Gonorrhea, South Dakota

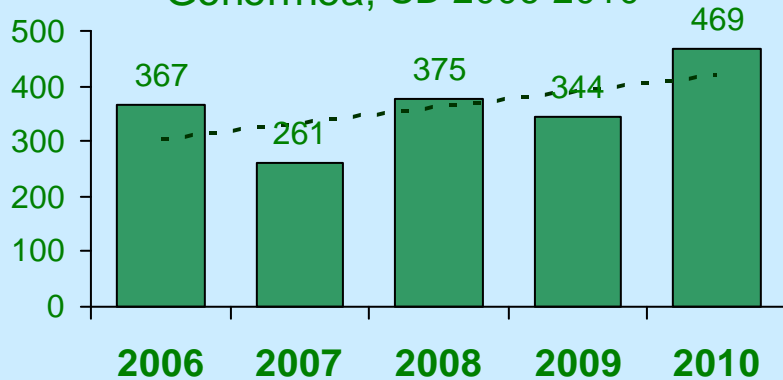
Gonorrhea
South Dakota 64 Cases
(Rate 7.9 per 100,000 population)



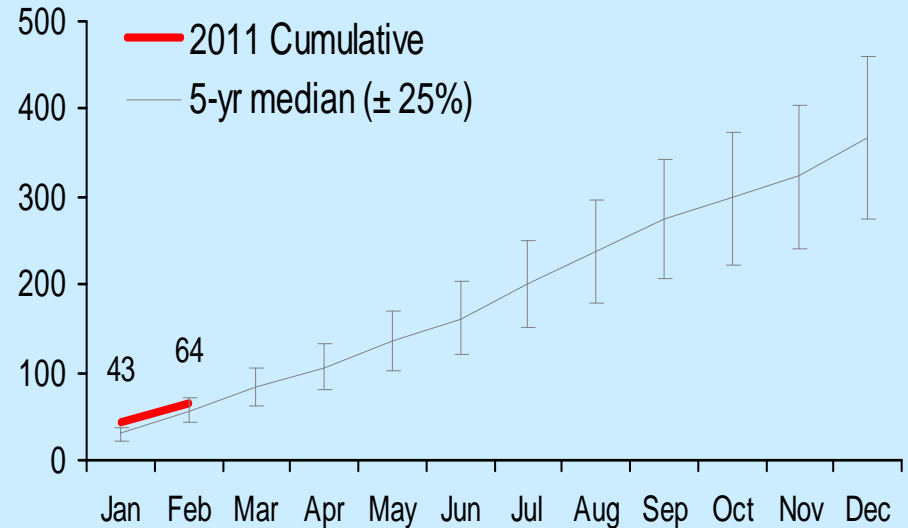
Age & sex of cases



Gonorrhea, SD 2006-2010

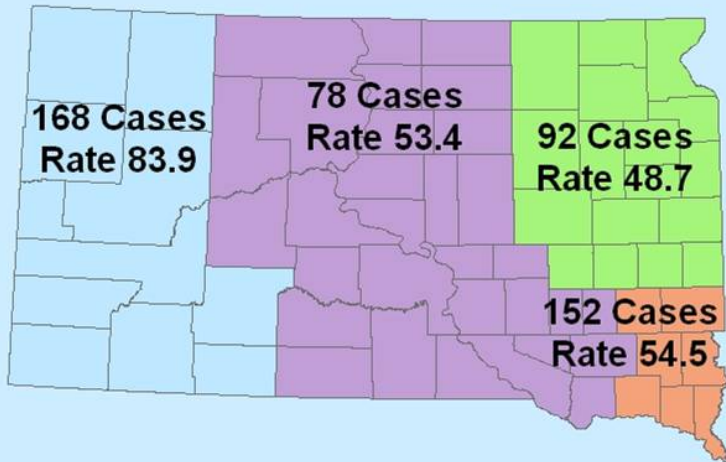


Cases by month, 2011 and 5-year median

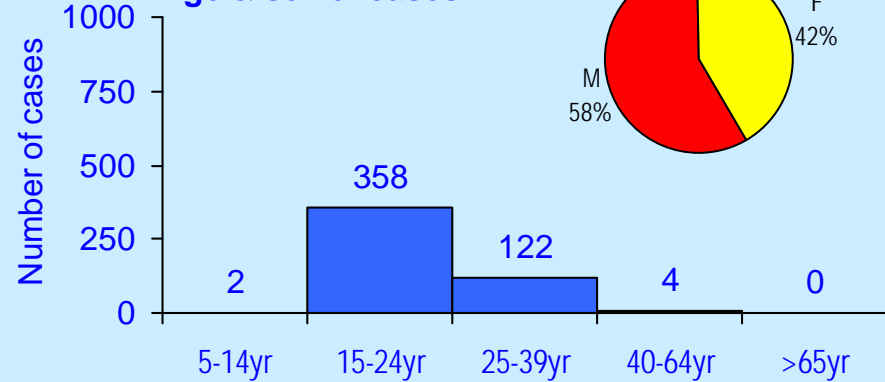


Chlamydia, South Dakota

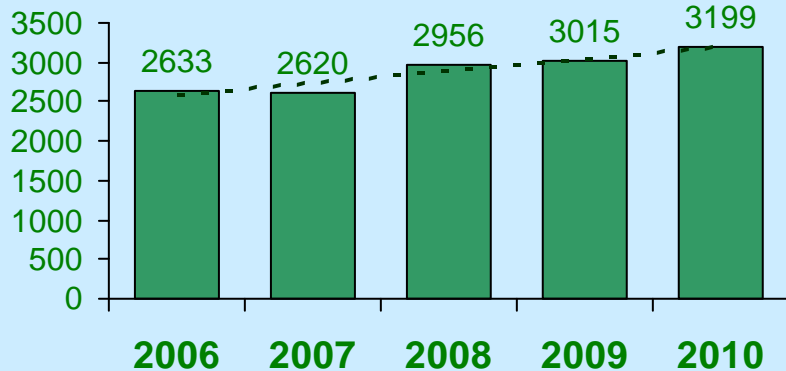
Chlamydia
South Dakota 490 Cases
(Rate 60.2 per 100,000 population)



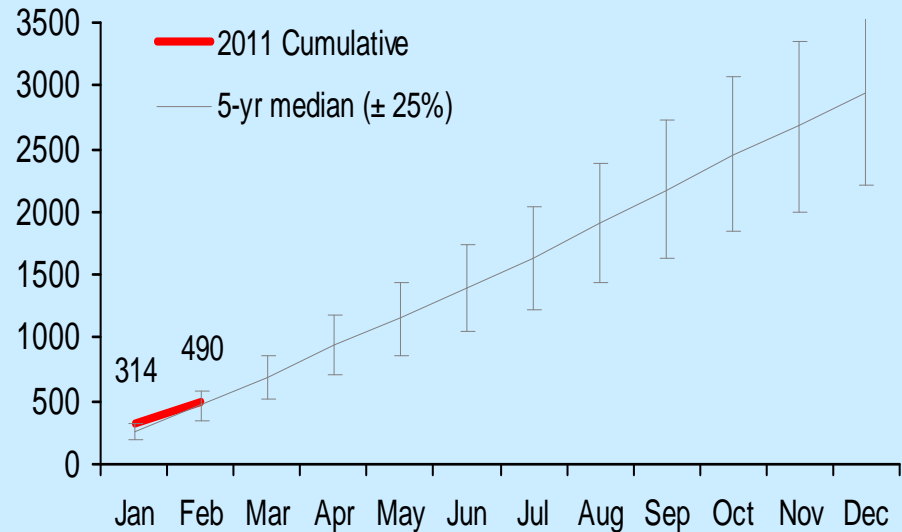
Age & sex of cases



Chlamydia, SD 2006-2010

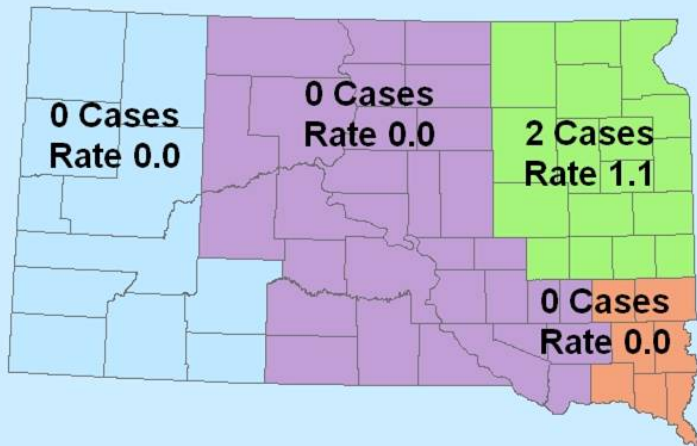


Cases by month, 2011 and 5-year median

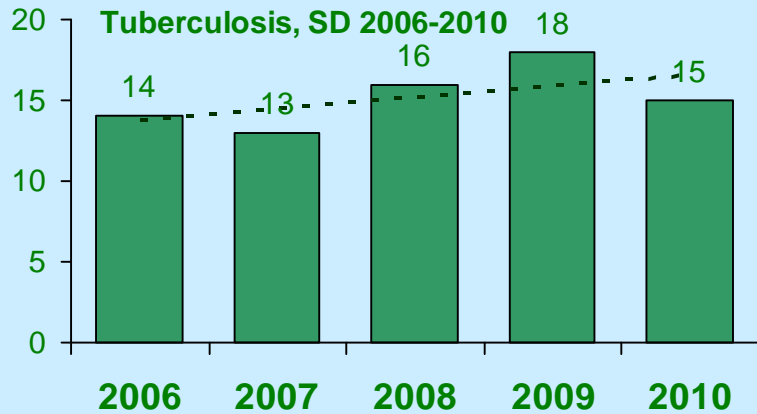
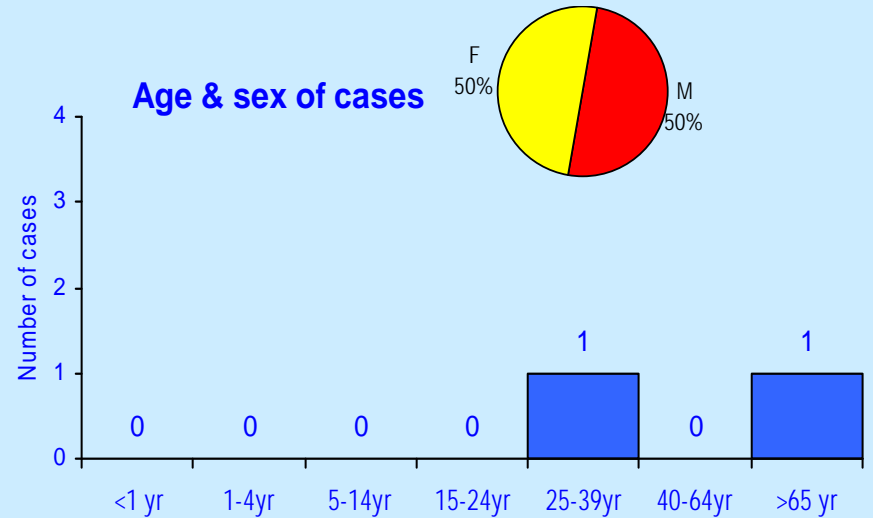


Tuberculosis, South Dakota

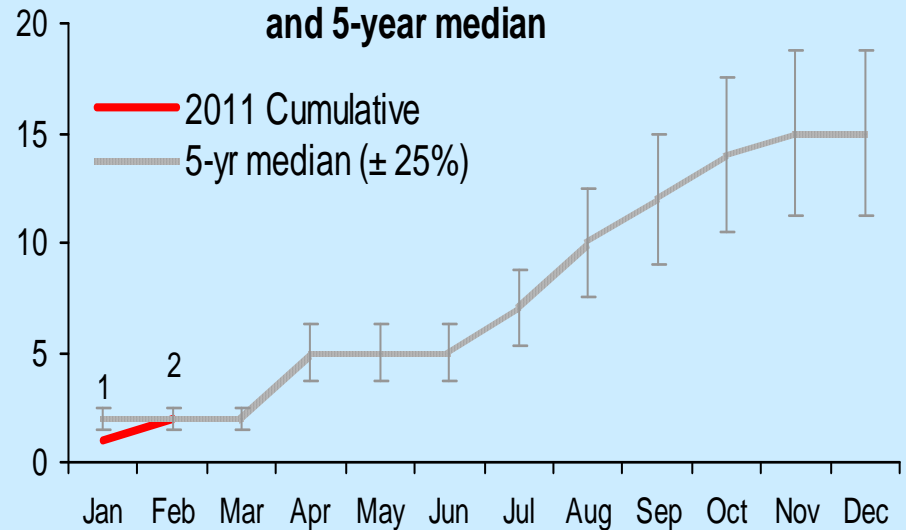
Tuberculosis
South Dakota 2 Cases
 (Rate 0.2 per 100,000 population)



Age & sex of cases



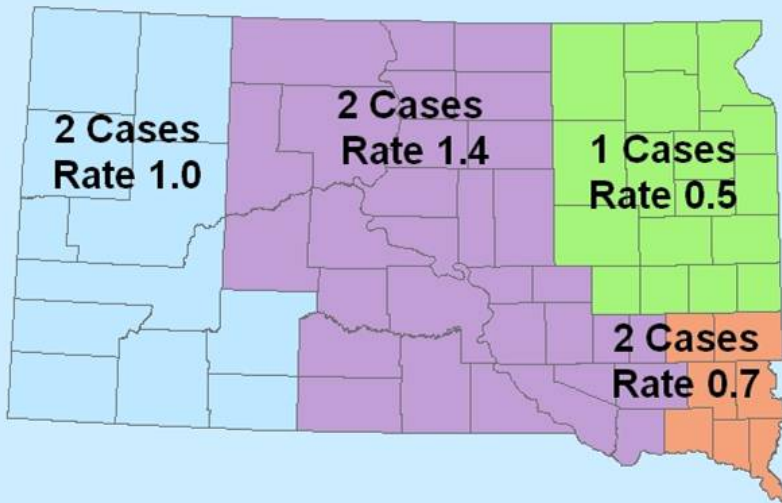
Cases by month, 2011
and 5-year median



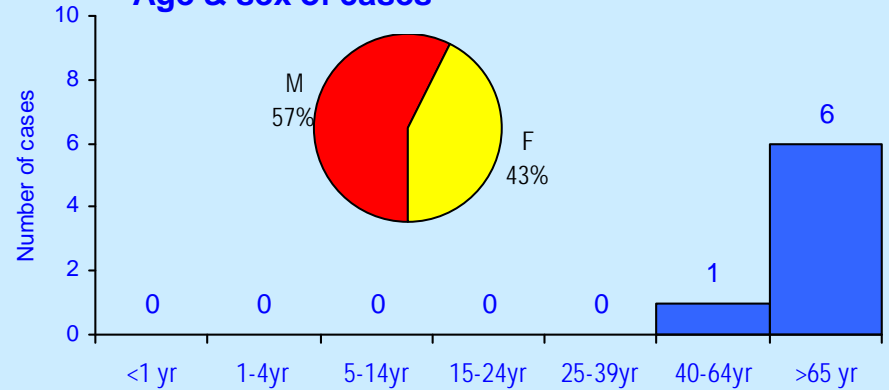
Invasive MRSA, South Dakota

(Invasive Methicillin-Resistant *Staphylococcus aureus*)

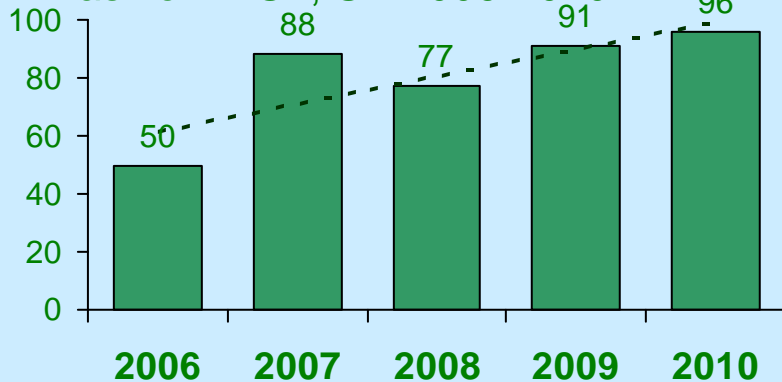
MRSA, Invasive
South Dakota 7 Cases
 (Rate 0.9 per 100,000 population)



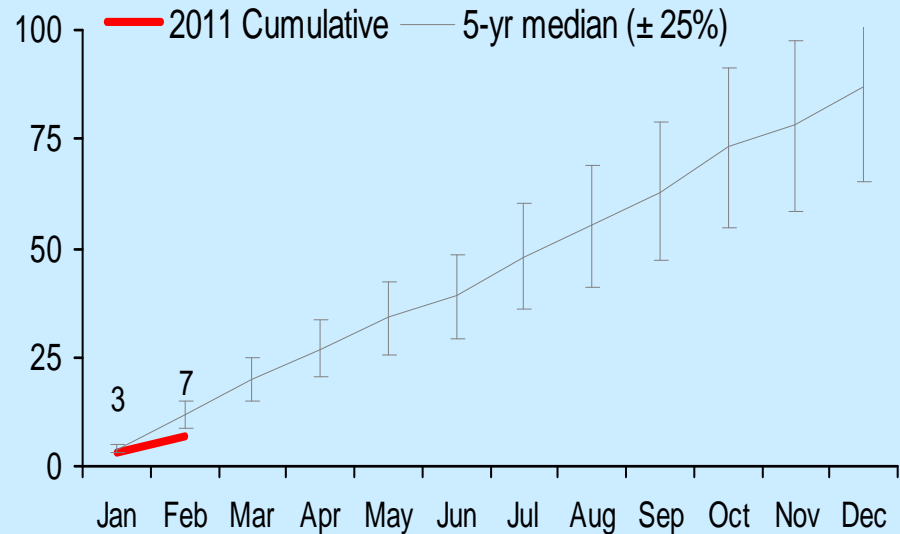
Age & sex of cases



Invasive MRSA, SD 2006-2010

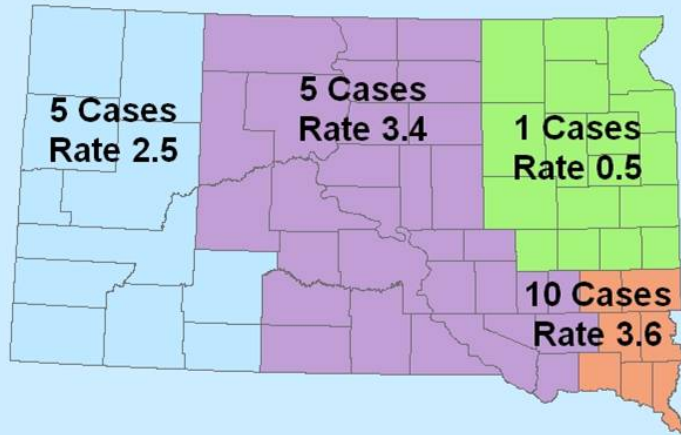


Cases by month, 2011 and 5-year median

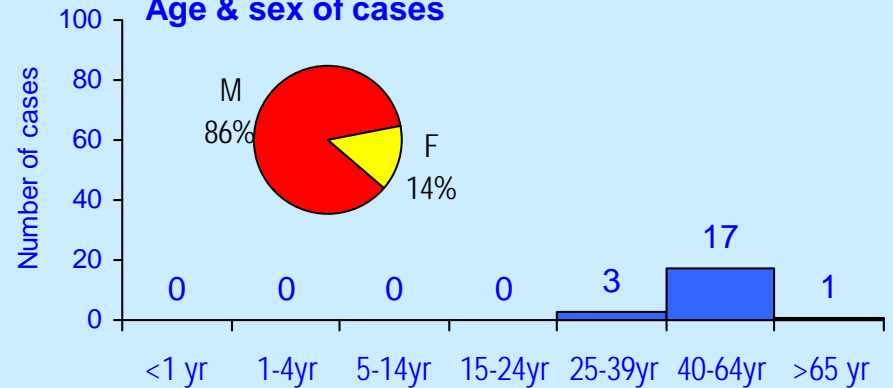


Hepatitis C (chronic), South Dakota

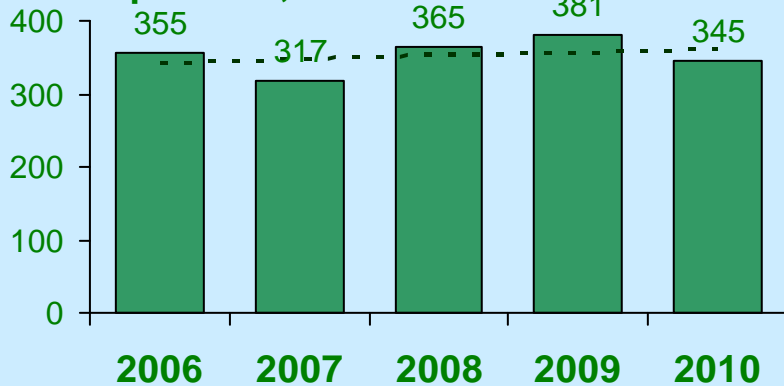
Hepatitis C
South Dakota 21 Cases
 (Rate 2.6 per 100,000 population)



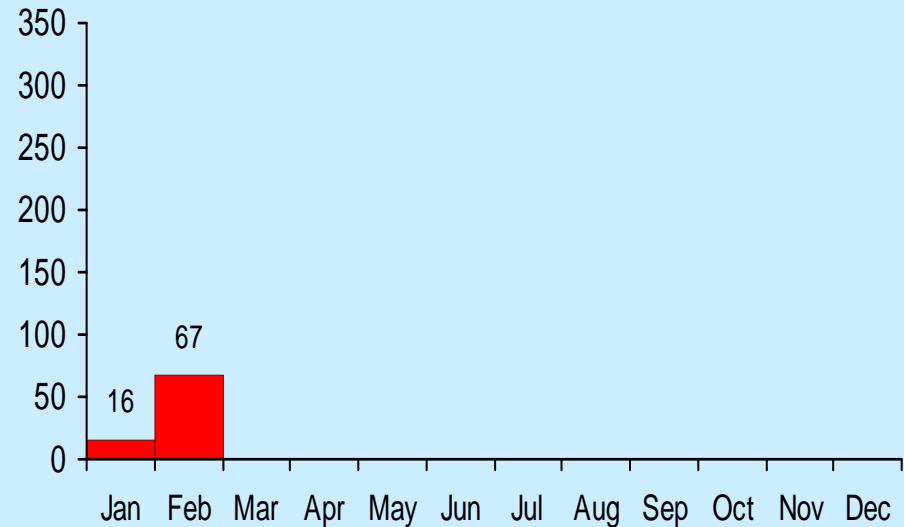
Age & sex of cases



Hepatitis C, SD 2006-2010



Cases by month, 2011 cumulative



Hepatitis C fact sheet:

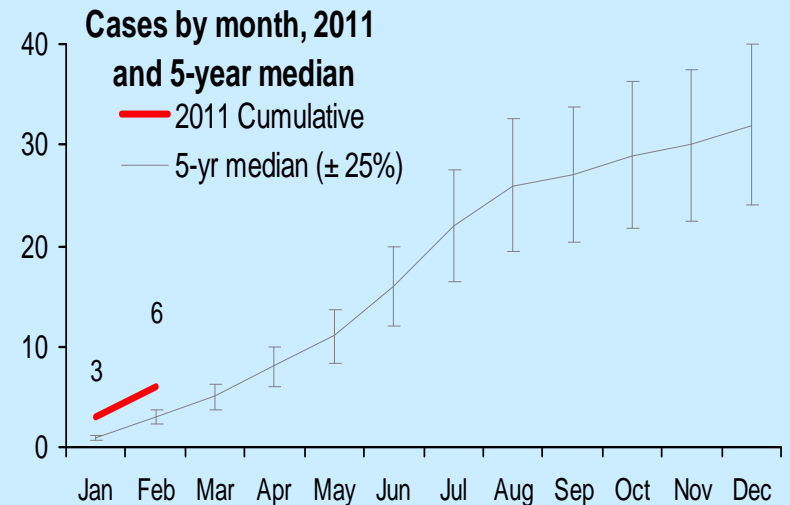
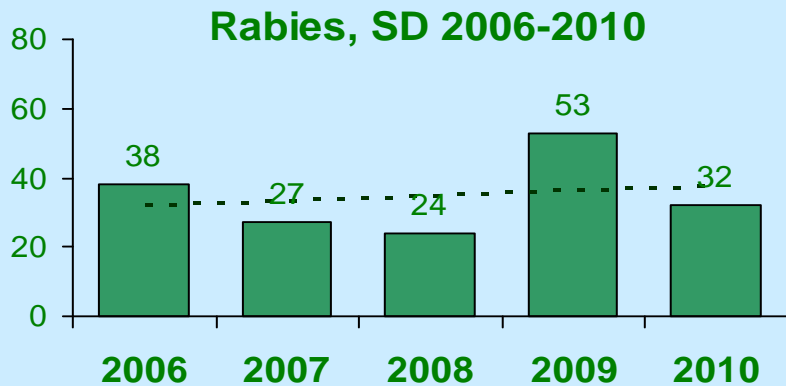
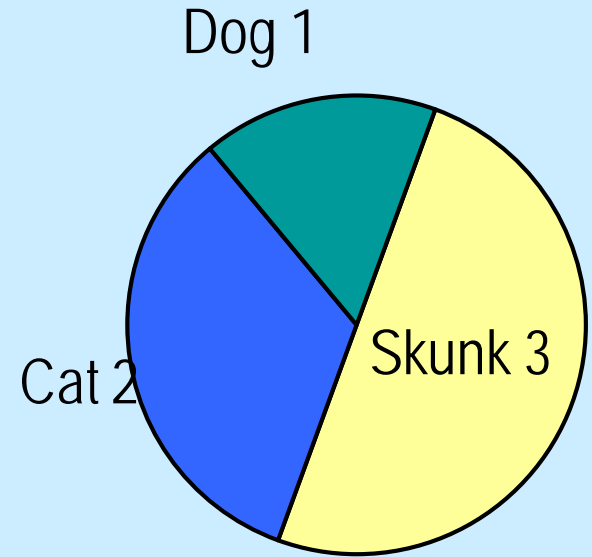
<http://doh.sd.gov/diseasefacts/HepatitisC.aspx>

*Missing data in some hepatitis C cases

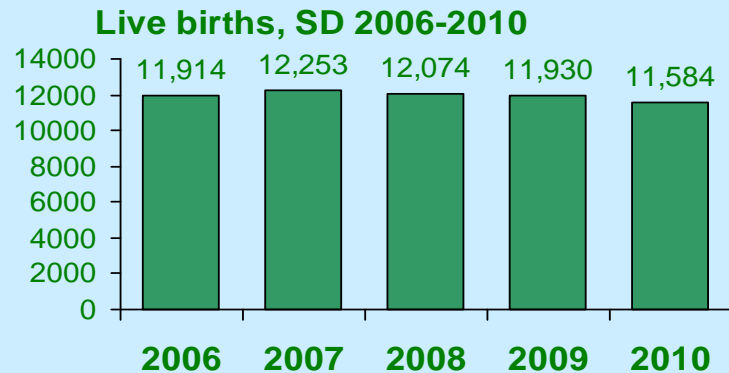
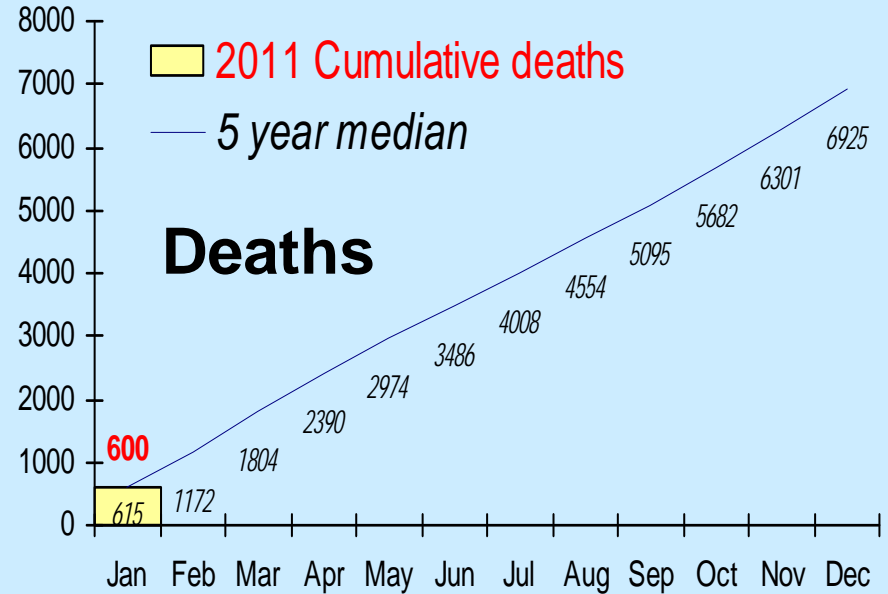
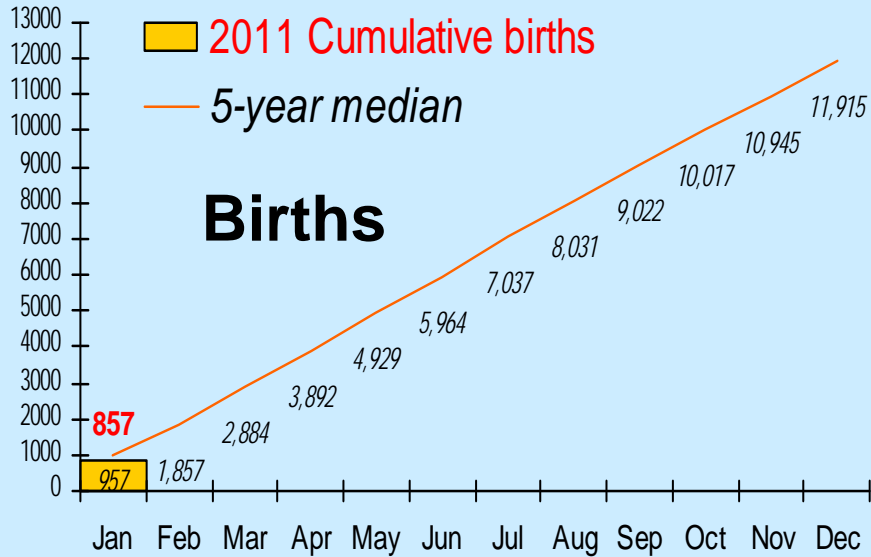
Rabies, South Dakota

County: rabid animals 6

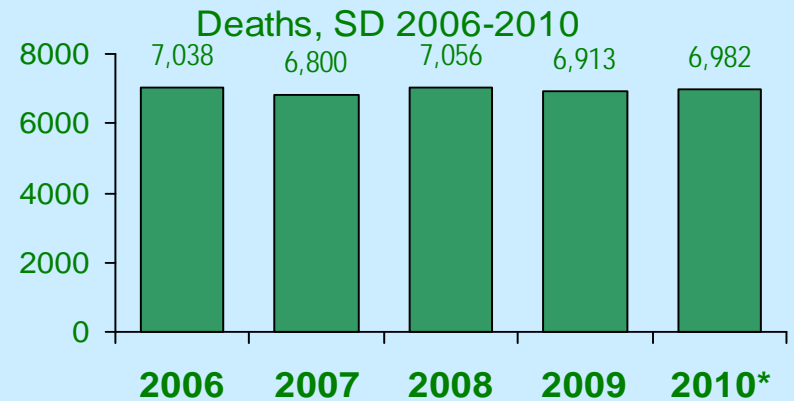
Butte: cat 1
 Charles Mix: cat 1
 Grant: skunk 2
 Gregory: skunk 1
 Lyman: dog 1



Births and deaths, *South Dakota, 2011*



*2010 provisionsl



*2010 provisional data

Other diseases, South Dakota, Year-to-date 2011

Disease0	Total cases YTD	5-yr median (2005-2009)	Central Region cases	Northeast Region cases	Southeast Region cases	West Region cases
Chicken pox	2	12	0	1	1	0
Hepatitis A	2	0	0	0	1	1
Hepatitis B, chronic	4	-	1	1	1	1
Legionnaires'	1	0	0	0	0	1
Meningococcal, invasive	1	0	0	0	1	0
Pertussis	1	6	0	0	0	1
Shigella	1	11	0	0	1	0
Strep A, invasive	6	4	1	0	2	3
Strep B, invasive	3	2	2	1	0	0

South Dakota, past 10 years, 2001 - 2010

Reportable Diseases	2001	2002	2003	2004	2005	2006	2007	2008	2009	2010*	Median
Campylobacteriosis	160	198	188	273	244	219	235	262	298	226	230
Chlamydia	1821	2215	2606	2534	2701	2633	2620	2942	3015	3199	2626
Cryptosporidiosis	8	42	49	44	31	86	169	88	138	108	68
<i>E. coli</i>, shiga toxin-producing	44	41	29	33	29	50	47	53	71	35	42
Giardiasis	106	83	89	87	118	97	104	136	112	102	103
Gonorrhea	289	263	226	304	351	367	261	370	344	469	324
Hantavirus pulmno syndro	0	0	1	1	2	2	1	0	0	0	1
Hepatitis A	3	3	0	4	1	9	6	4	3	1	3
HIV and AIDS	22	19	25	19	33	34	25	34	21	35	25
Legionellosis	3	4	2	5	21	5	4	3	2	9	4
Meningococcal disease	5	2	1	4	4	4	3	3	5	0	4
MRSA, invasive	NR	NR	NR	36	47	50	88	77	91	91	77
Mumps	0	0	0	0	0	296	6	1	2	2	1
Pertussis	5	8	7	169	183	26	60	67	58	31	44
Q Fever	0	1	0	0	2	2	1	1	9	3	1
Rabies, animal	58	96	132	94	68	38	27	24	53	32	55
Salmonellosis	151	121	131	156	160	135	174	152	198	183	154
Shigellosis	716	157	17	13	131	389	122	76	4	7	99
Tuberculosis	13	13	20	11	16	14	13	16	18	15	14
Tularemia	7	3	5	4	8	5	7	10	5	11	6
West Nile neuroinvasive	-	14	170	6	35	38	48	11	6	4	14
West Nile fever	-	23	869	45	194	75	160	28	15	16	45

*2010 provisional

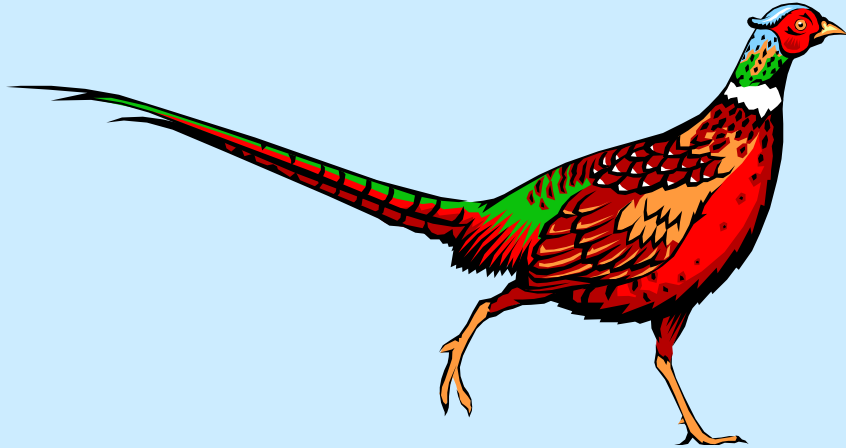
Reportable Diseases List <http://doh.sd.gov/Disease/Report.aspx>

Monthly surveillance reports <http://doh.sd.gov/ID/site.aspx>

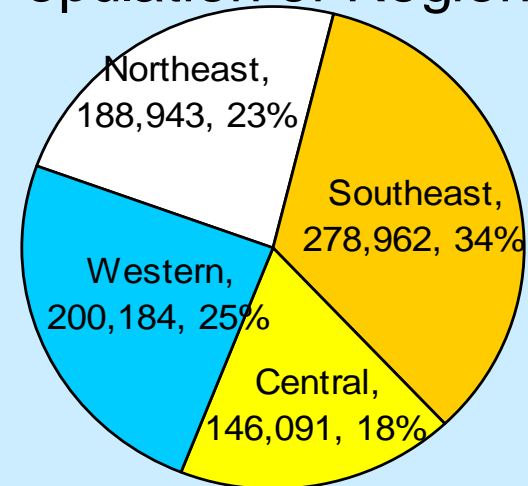
To report Infectious diseases

- Secure website: www.state.sd.us/doh/diseasereport
- Telephone: **1-800-592-1804** confidential recorder; or **1-800-592-1861** or **605-773-3737** for a disease surveillance person during normal business hours; after hours to report Category I diseases or other emergencies, call **605-280-4810**.
- Fax: **605-773-5509**
- Mail or courier, address to: Infectious Disease Surveillance, Office of Disease Prevention, Department of Health, 615 East 4th Street, Pierre, SD 57501; marked "*Confidential Disease Report*"

Case definitions: www.cdc.gov/ncphi/diss/nndss/phs/infdis2010.htm



Population of Regions



South Dakota 2010 population: 814,180